

Features

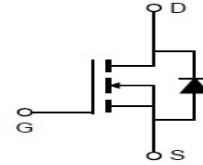
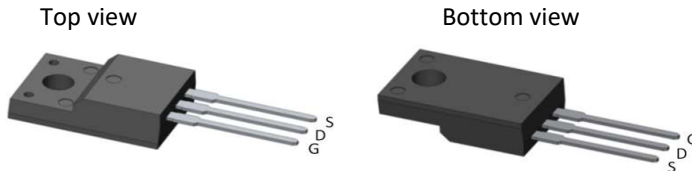
- CRM(CQ) Super_Junction technology
- Much lower Ron*A performance for On-state efficiency
- Better efficiency due to very low FOM
- Qualified for industrial grade applications according to JEDEC

Applications

- LED/LCD/PDP TV and monitor Lighting
- Solar/Renewable/UPS-Micro Inverter System
- Charger
- Power Supply

Product Summary

$V_{DS,min}$	650V
$R_{DS(on),typ}$	0.27Ω
I_D	13A

100% DVDS Tested
100% Avalanche Tested

Package Marking and Ordering Information

Part #	Marking	Package	Packing	Reel Size	Tape Width	Qty
CRJF290N65G2	CRJF290N65G2	TO220F	Tube	N/A	N/A	50pcs

Absolute Maximum Ratings

Parameter	Symbol	Value	Unit
Drain-source voltage	V_{DS}	650	V
Continuous drain current ¹⁾ $T_C = 25^\circ\text{C}$ $T_C = 100^\circ\text{C}$	I_D	13 8	A
Pulsed drain current ²⁾ ($T_C = 25^\circ\text{C}$, t_p limited by $T_{j,max}$)	$I_{D,pulse}$	53	A
Avalanche energy, single pulse (L=30mH)	E_{AS}	120	mJ
MOSFET dv/dt ruggedness	dv/dt	50	V/ns
Gate-Source voltage	V_{GS}	±30	V
Power dissipation ($T_C = 25^\circ\text{C}$)	P_{tot}	21	W
Continuous diode forward current ($T_C = 25^\circ\text{C}$)	I_S	13	A
Diode pulse current ²⁾ ($T_C = 25^\circ\text{C}$)	$I_{S,pulse}$	53	A
Recovery diode dv/dt ³⁾	dv/dt	50	V/ns
Operating junction and storage temperature	T_j, T_{stg}	-55...+150	°C

 1) Limited by $T_{j,max}$. Maximum Duty Cycle $D = 0.50$; TO-252 equivalent

 2) Pulse width t_p limited by $T_{j,max}$

 3) Identical low side and high side switch with identical R_θ

Thermal Resistance

Parameter	Symbol	Value			Unit	Test Condition
		min.	typ.	max.		
Thermal resistance, junction – case	R_{thJC}	-	4.17	5.84	°C/W	
Thermal resistance, junction – ambient	R_{thJA}	-	-	64	°C/W	

Electrical Characteristic (at $T_j=25^{\circ}\text{C}$, unless otherwise specified)

Parameter	Symbol	Value			Unit	Test Condition
		min.	typ.	max.		

Static Characteristic

Drain-source breakdown voltage	BV_{DSS}	650	-	-	V	$V_{GS}=0V, I_D=250\mu A$
Gate threshold voltage	$V_{GS(th)}$	2.8	-	3.8	V	$V_{DS}=V_{GS}, I_D=250\mu A$
Zero gate voltage drain current	I_{DSS}	-	-	1	μA	$V_{DS}=650V, V_{GS}=0V$ $T_j=25^{\circ}\text{C}$ $T_j=150^{\circ}\text{C}$
Gate-source leakage current	I_{GSS}	-	-	± 100	nA	$V_{GS}=\pm 30V, V_{DS}=0V$
Drain-source on-state resistance	$R_{DS(on)}$	-	0.27	0.30	Ω	$V_{GS}=10V, I_D=7.5A$ $T_j=25^{\circ}\text{C}$ $T_j=150^{\circ}\text{C}$
Transconductance	g_{fs}	-	11	-	S	$V_{DS}=20V, I_D=7.5A$

Dynamic Characteristic

Input Capacitance	C_{iss}	-	750	-	pF	$V_{GS}=0V, V_{DS}=100V,$ $f=1\text{MHz}$
Output Capacitance	C_{oss}	-	40	-		
Reverse Transfer Capacitance	C_{rss}	-	1.4	-		
Gate Total Charge	Q_g	-	23.5	-	nC	$V_{GS}=10V, V_{DS}=480V,$ $I_D=7.5A$
Gate-Source charge	Q_{gs}	-	5	-		
Gate-Drain charge	Q_{gd}	-	10	-		
Gate plateau voltage	$V_{plateau}$	-	5.6	-	V	
Turn-on delay time	$t_{d(on)}$	-	14	-	ns	$V_{GS}=10V, I_D=7.5A,$ $V_{DS}=400V, R_g=25\Omega$
Rise time	t_r	-	24	-		
Turn-off delay time	$t_{d(off)}$	-	97	-		
Fall time	t_f	-	22	-		
Gate resistance	$R_{g,int}$	-	6.5	-	Ω	$f=1\text{MHz}$

Body Diode Characteristic

Parameter	Symbol	Value			Unit	Test Condition
		min.	typ.	max.		
Body Diode Forward Voltage	V_{SD}	0.6	0.86	1.1	V	$V_{GS}=0V, I_{SD}=7.5A$
Body Diode Reverse Recovery Time	t_{rr}	-	250	-	ns	$I_{SD}=7.5A$ $di_F/dt=100A/\mu s$
Body Diode Reverse Recovery Charge	Q_{rr}	-	2.94	-	μC	$V_{DS}=100V$

Typical Performance Characteristics

Fig 1. Output Characteristics ($T_J=25^\circ\text{C}$)

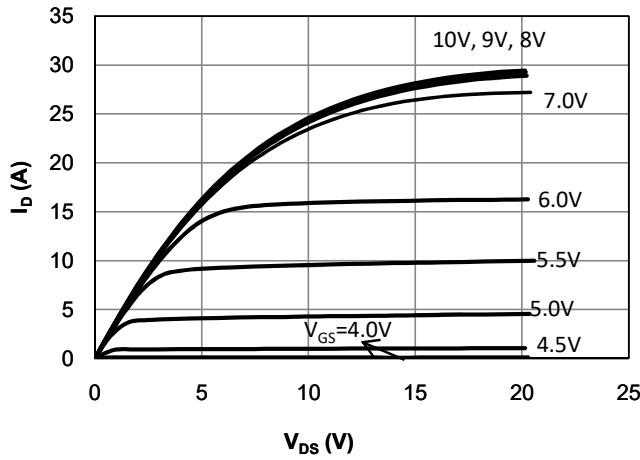


Fig 2. Output Characteristics ($T_J=150^\circ\text{C}$)

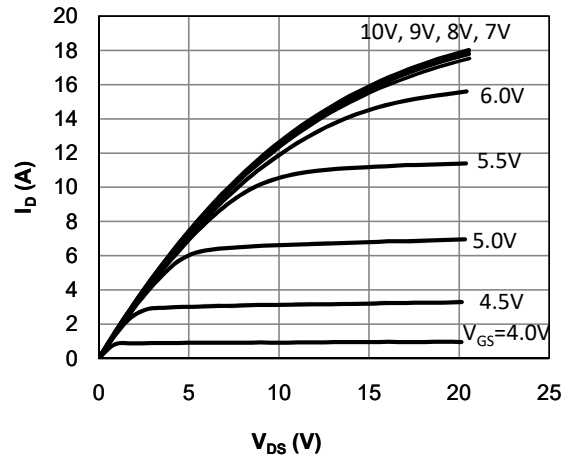


Fig 3: Transfer Characteristics

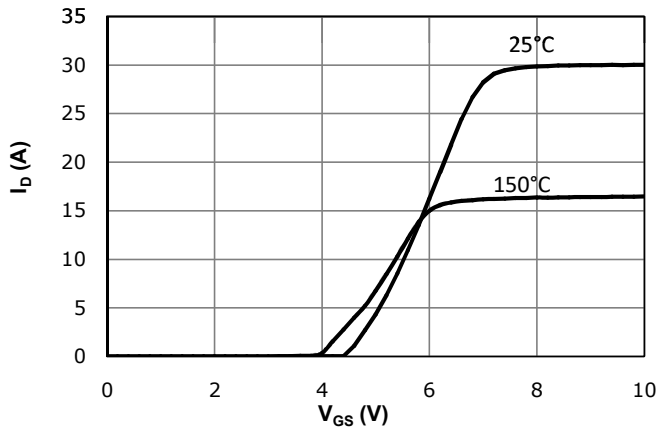


Fig 4: V_{TH} vs. T_J Temperature Characteristics

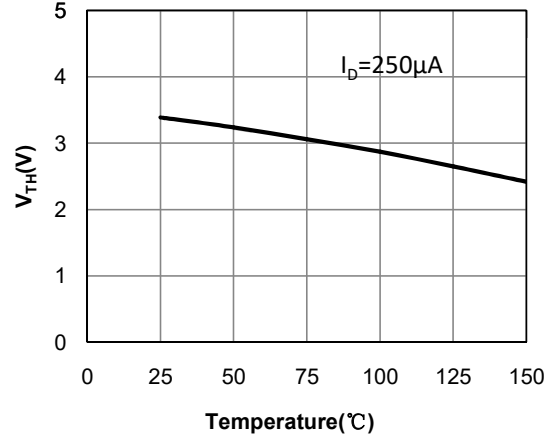


Fig 5: $R_{DS(on)}$ vs. I_{DS} Characteristics ($T_J=25^\circ\text{C}$)

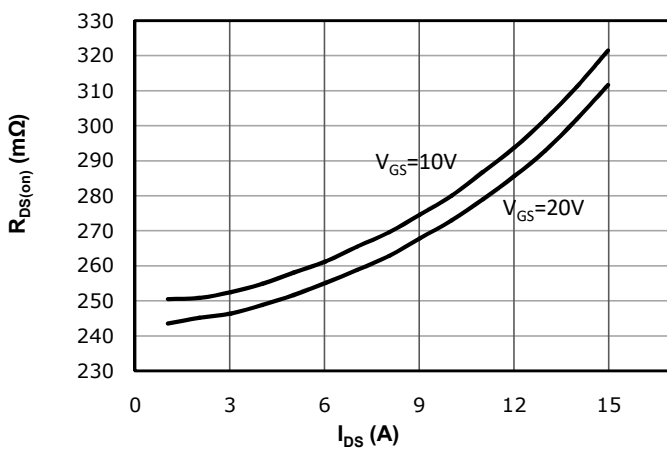


Fig 6: $R_{DS(on)}$ vs. Temperature

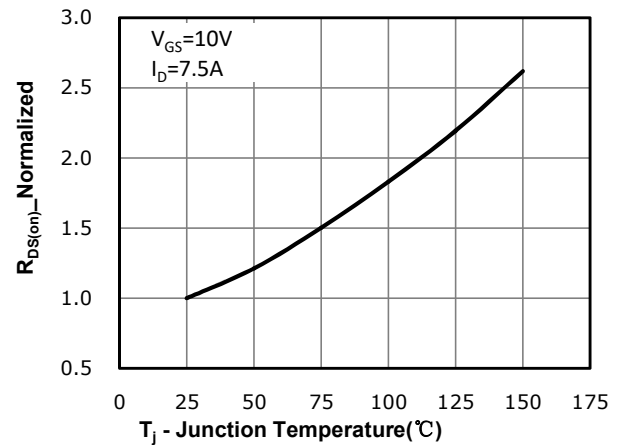


Fig 7: BV_{DSS} vs. Temperature

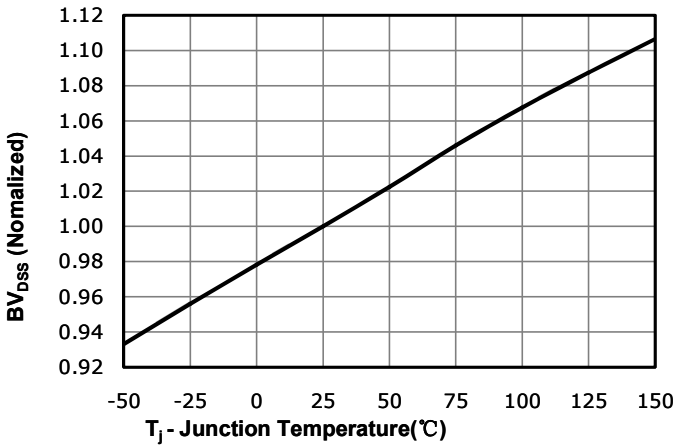


Fig 8: $R_{DS(on)}$ vs. Gate Voltage

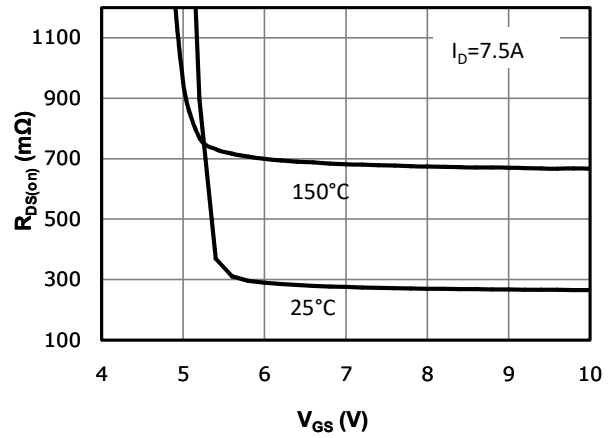


Fig 9: Body-diode Forward Characteristics

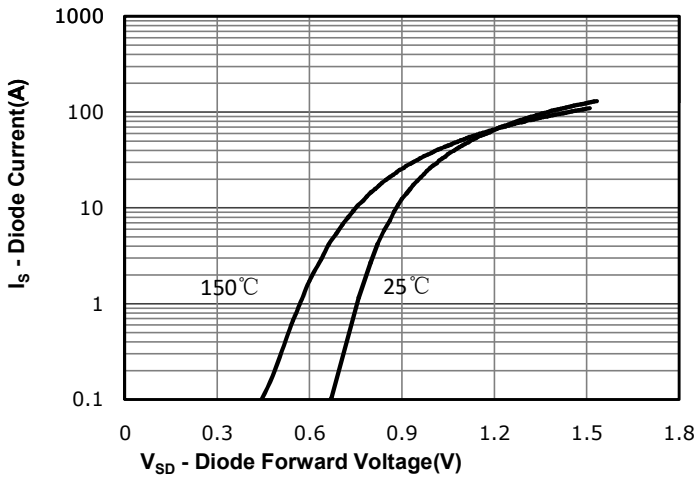


Fig 10: Gate Charge Characteristics

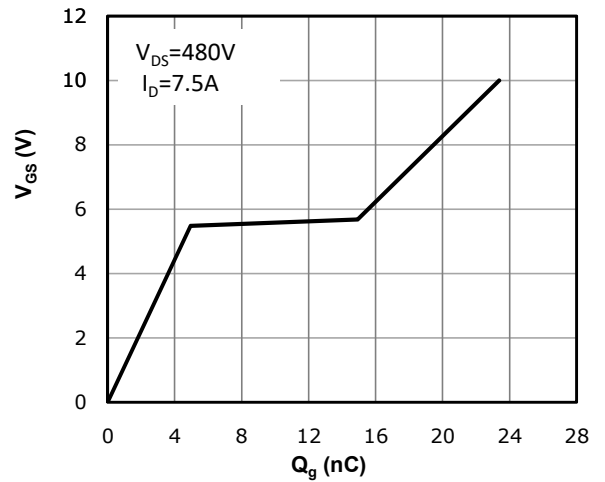


Fig 11: Capacitance Characteristics

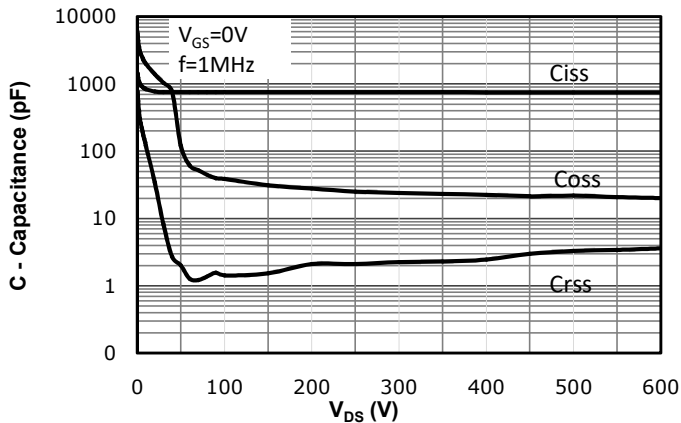


Fig 12: Safe Operating Area

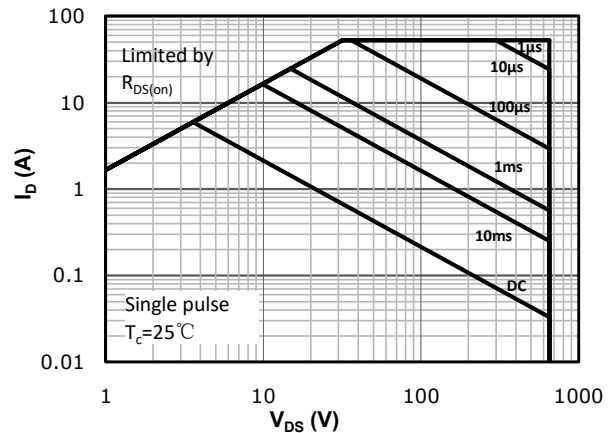
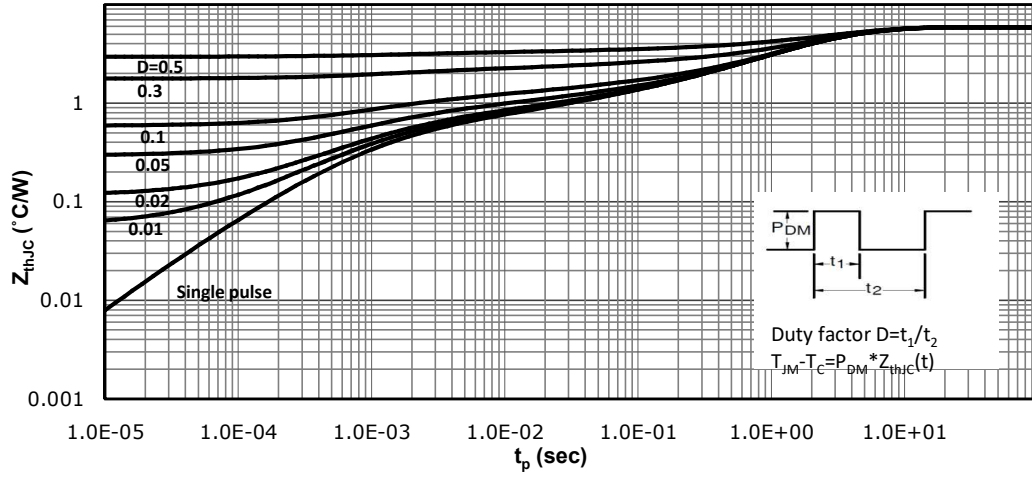
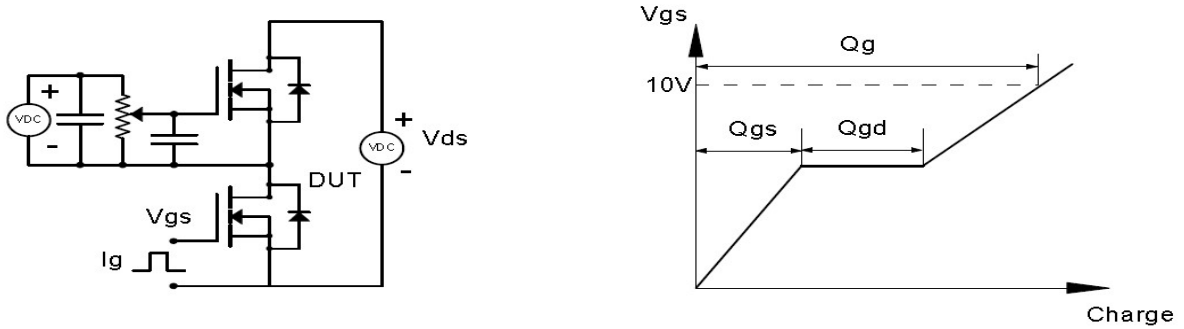


Fig 13: Max. Transient Thermal Impedance

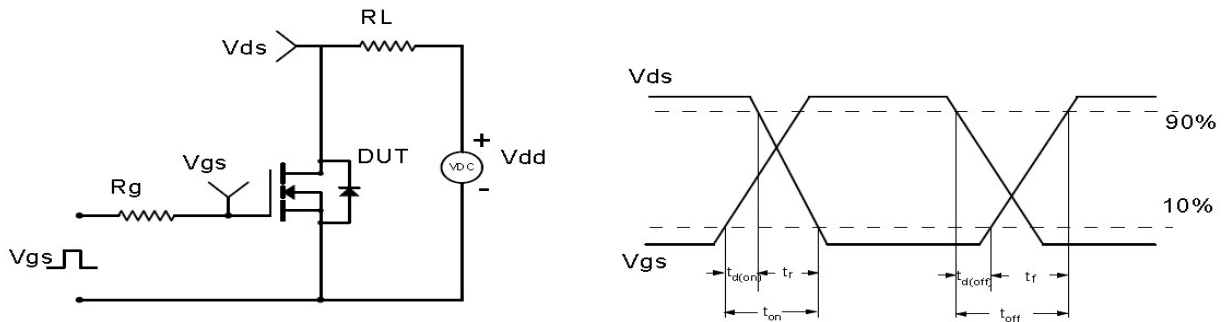


Test Circuit & Waveform

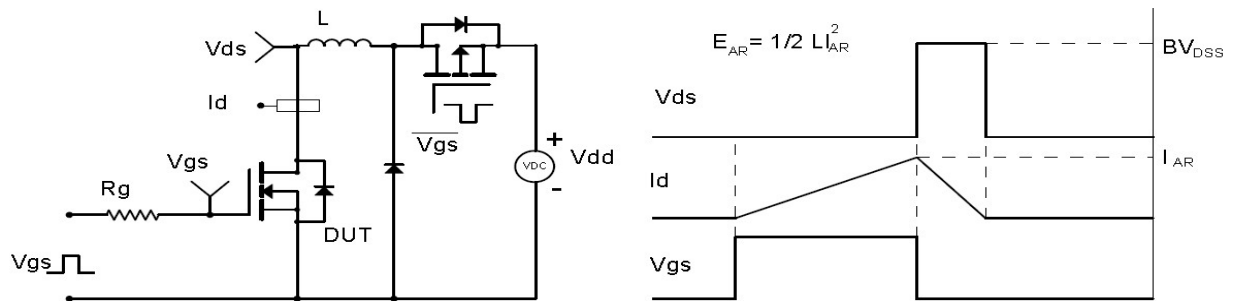
Gate Charge Test Circuit & Waveform



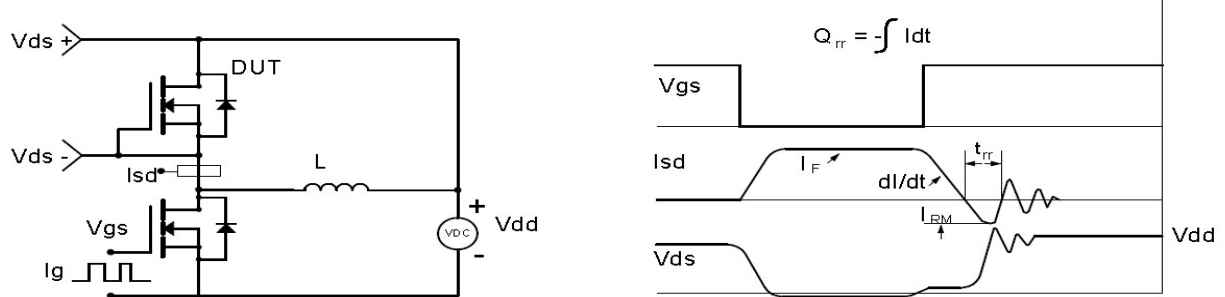
Resistive Switching Test Circuit & Waveforms



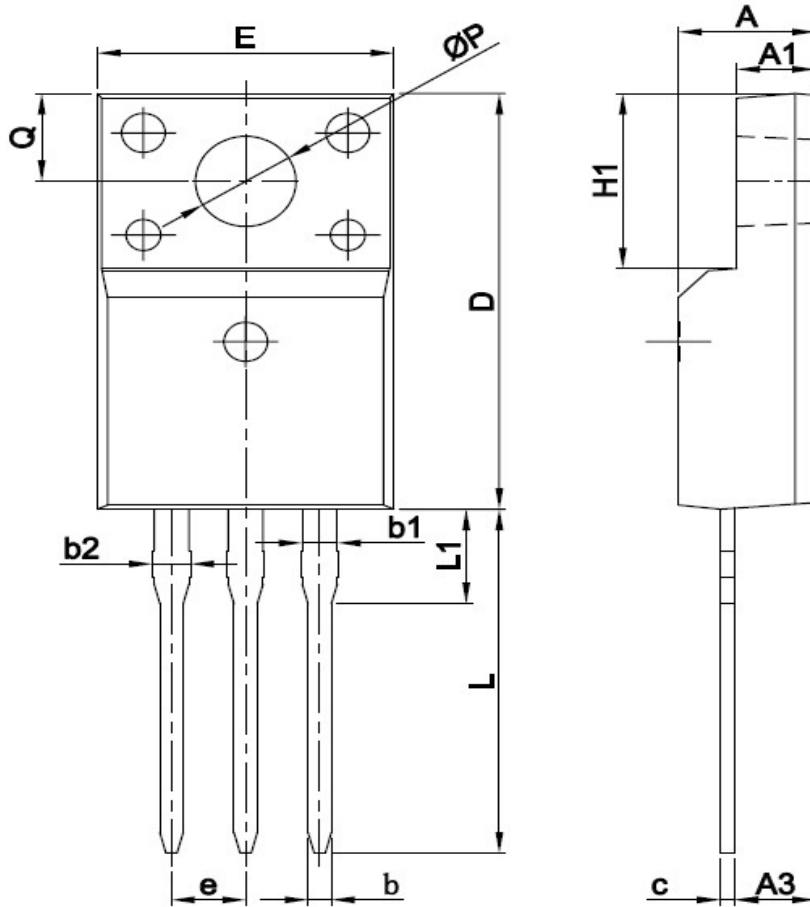
Unclamped Inductive Switching (UIS) Test Circuit & Waveforms



Diode Recovery Test Circuit & Waveforms



Package Outline: TO-220F



Symbol	Dimensions In Millimeters		Dimensions In Inches	
	Min.	Max.	Min.	Max.
A	4.30	4.90	0.169	0.193
A1	2.34	2.87	0.092	0.113
A3	2.20	2.96	0.087	0.117
b	0.60	0.90	0.024	0.035
b1	0.95	1.45	0.037	0.057
b2	1.15	1.55	0.045	0.061
c	0.40	0.70	0.016	0.028
D	15.50	16.17	0.610	0.637
e	2.54 BSC		0.100 BSC	
E	9.70	10.66	0.382	0.420
H1	6.70 REF		0.264 REF	
L	12.46	13.75	0.491	0.541
L1	2.80	3.80	0.110	0.150
Q	3.05	3.55	0.120	0.140
P	2.98	3.38	0.117	0.133

Marking:



NOTE:

NXBBAAAA

N	—WB code (Usually omitted)
X	—Assembly location code
BB	—Fab code
AAAA	—Lot code

Revision History

Revision	Date	Major changes
2.1	2023/6/29	Update top&bottom view and POD

Disclaimer

Unless otherwise specified in the datasheet, the product is designed and qualified as a standard commercial product and is not intended for use in applications that require extraordinary levels of quality and reliability, such as automotive, aviation/aerospace and life-support devices or systems.

Any and all semiconductor products have certain probability to fail or malfunction, which may result in personal injury, death or property damage. Customer are solely responsible for providing adequate safe measures when design their systems.

CRM(CQ) reserves the right to improve product design, function and reliability without notice.