



CS130N03 A4

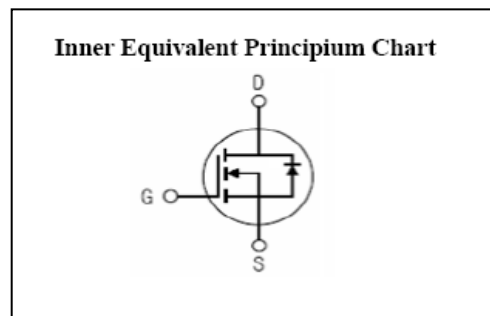
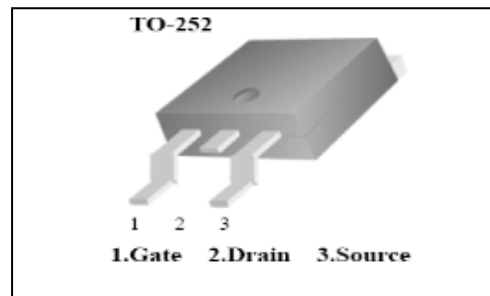
General Description:

CS130N03 A4, the silicon N-channel Enhanced VDMOSFETs, is obtained by advanced Trench Technology which reduce the conduction loss, improve switching performance and enhance the avalanche energy. The transistor can be used in various power switching circuit for system miniaturization and higher efficiency. The package form is TO-252, which accords with the RoHS standard.

Features:

- Fast Switching
- Low ON Resistance (Rdson ≤ 2.5mΩ)
- Low Gate Charge
- Low Reverse transfer capacitances (Typical: 482pF)
- 100% Single Pulse avalanche energy Test

V <sub>DSS</sub>	30	V
I <sub>D</sub> (Silicon limited current)	130	A
I <sub>D</sub> (Package limited current)	60	A
P <sub>D</sub> (T <sub>C</sub> =25°C)	83	W
R <sub>DS(ON)Typ</sub>	1.9	mΩ



Applications:

Power switch circuit of adaptor and charger.

Absolute (T<sub>J</sub>= 25°C unless otherwise specified):

Symbol	Parameter	Rating	Units
V <sub>DSS</sub>	Drain-to-Source Voltage	30	V
I <sub>D</sub>	Continuous Drain Current T <sub>C</sub> = 25 °C	130	A
	Continuous Drain Current T <sub>C</sub> = 100 °C (Package limited)	60	A
I <sub>DM</sub> <sup>a1</sup>	Pulsed Drain Current T <sub>C</sub> = 25 °C (Package limited)	240	A
V <sub>GS</sub>	Gate-to-Source Voltage	± 20	V
E <sub>AS</sub> <sup>a2</sup>	Single Pulse Avalanche Energy	1000	mJ
P <sub>D</sub>	Power Dissipation T <sub>C</sub> = 25 °C	83	W
	Derating Factor above 25 °C	0.666	W/°C
T <sub>J</sub> , T <sub>stg</sub>	Operating Junction and Storage Temperature Range	150, -55 to 150	°C

**Electrical Characteristics** ( $T_J = 25^\circ\text{C}$  unless otherwise specified):

<b>OFF Characteristics</b>						
Symbol	Parameter	Test Conditions	Rating			Units
			Min.	Typ.	Max.	
$V_{DSS}$	Drain to Source Breakdown Voltage	$V_{GS}=0V, I_D=250\mu A$	30	--	--	V
$I_{DSS}$	Drain to Source Leakage Current	$V_{DS}=30V, V_{GS}=0V, T_J=25^\circ\text{C}$	--	--	1	$\mu A$
		$V_{DS}=24V, V_{GS}=0V, T_J=125^\circ\text{C}$	--	--	100	$\mu A$
$I_{GSS(F)}$	Gate to Source Forward Leakage	$V_{GS}=+20V$	--	--	100	nA
$I_{GSS(R)}$	Gate to Source Reverse Leakage	$V_{GS}=-20V$	--	--	-100	nA

<b>ON Characteristics</b>						
Symbol	Parameter	Test Conditions	Rating			Units
			Min.	Typ.	Max.	
$R_{DS(ON)}$	Drain-to-Source On-Resistance	$V_{GS}=10V, I_D=19A$	--	1.9	2.5	m $\Omega$
		$V_{GS}=4.5V, I_D=19A$		2.6	3.3	m $\Omega$
$V_{GS(TH)}$	Gate Threshold Voltage	$V_{DS} = V_{GS}, I_D = 250\mu A$	1.0	--	3.0	V
Pulse width $t_p \leq 300\mu s, \delta \leq 2\%$						

<b>Dynamic Characteristics</b>						
Symbol	Parameter	Test Conditions	Rating			Units
			Min.	Typ.	Max.	
$R_g$	Gate resistance	$V_{GS}=0V, V_{DS}=0V, f=1MHz$	--	5.3	--	$\Omega$
$C_{iss}$	Input Capacitance	$V_{GS}=0V, V_{DS}=15V, f=1.0MHz$	--	4893	--	pF
$C_{oss}$	Output Capacitance		--	818	--	
$C_{rss}$	Reverse Transfer Capacitance		--	482	--	

<b>Resistive Switching Characteristics</b>						
Symbol	Parameter	Test Conditions	Rating			Units
			Min.	Typ.	Max.	
$t_{d(ON)}$	Turn-on Delay Time	$V_{GS}=10V, R_G=6\Omega, V_{DD}=15V, I_D=50A$	--	14.8	--	ns
$t_r$	Rise Time		--	15.2	--	
$t_{d(OFF)}$	Turn-Off Delay Time		--	119.6	--	
$t_f$	Fall Time		--	59.2	--	
$Q_g$	Total Gate Charge	$V_{GS}=10V, V_{DD}=15V, I_D=50A$	--	79.1	--	nC
$Q_{gs}$	Gate to Source Charge		--	13.6	--	
$Q_{gd}$	Gate to Drain ("Miller") Charge		--	16.0	--	

Source-Drain Diode Characteristics						
Symbol	Parameter	Test Conditions	Rating			Units
			Min.	Typ.	Max.	
$I_S$	Continuous Source Current (Body Diode)		--	--	60	A
$I_{SM}$	Maximum Pulsed Current (Body Diode)		--	--	240	A
$V_{SD}$	Diode Forward Voltage	$I_S=50A, V_{GS}=0V$	--	--	1.2	V
$t_{rr}$	Reverse Recovery Time	$I_S=50A, T_j = 25^\circ C$ $dI_F/dt=100A/\mu s,$	--	44.4	--	ns
$Q_{rr}$	Reverse Recovery Charge		--	34.6	--	nC
$I_{RRM}$	Reverse Recovery Current		--	1.6	--	A
Pulse width $t_p \leq 300 \mu s, \delta \leq 2\%$						

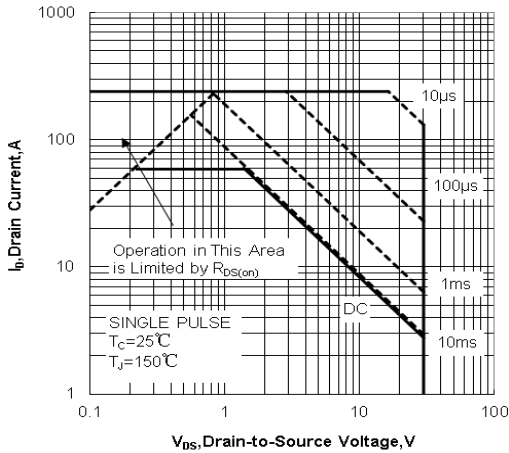
Symbol	Parameter	Max.	Units
$R_{\theta JC}$	Junction-to-Case	1.5	$^\circ C/W$
$R_{\theta JA}$	Junction-to-Ambient	100	$^\circ C/W$

<sup>a1</sup>: Repetitive rating; pulse width limited by maximum junction temperature

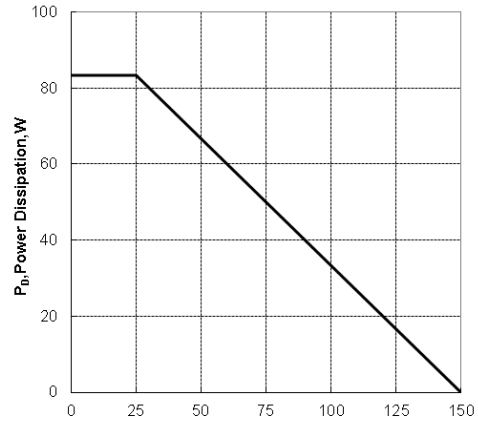
<sup>a2</sup>:  $L=1mH, I_D=44.73A, Start T_j=25^\circ C$

<sup>a3</sup>: Recommend soldering temperature defined by IPC/JEDEC J-STD 020

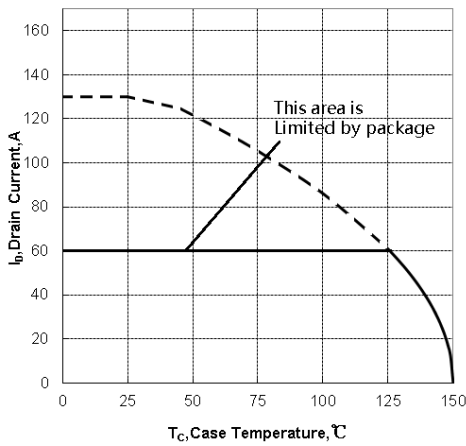
**Characteristics Curve:**



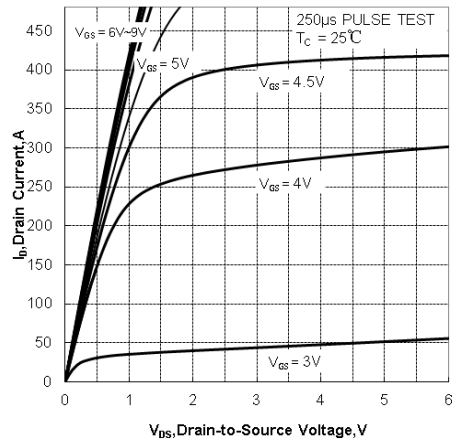
**Figure1. Maximum Forward Bias Safe Operating Area**



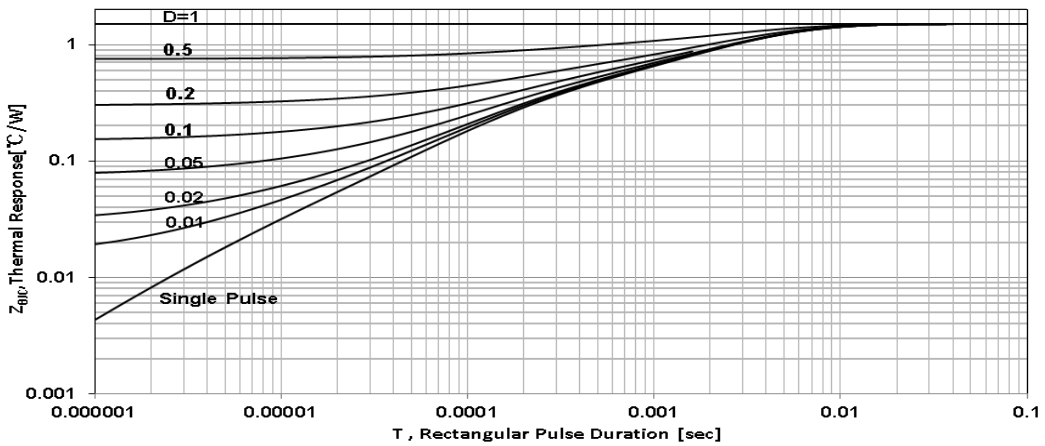
**Figure2. Maximum Power Dissipation vs Case Temperature**



**Figure3. Maximum Continuous Drain Current vs Case Temperature**



**Figure 4. Typical Output Characteristics**



**Figure5. Maximum Effective Transient Thermal Impedance, Junction-to-Case**

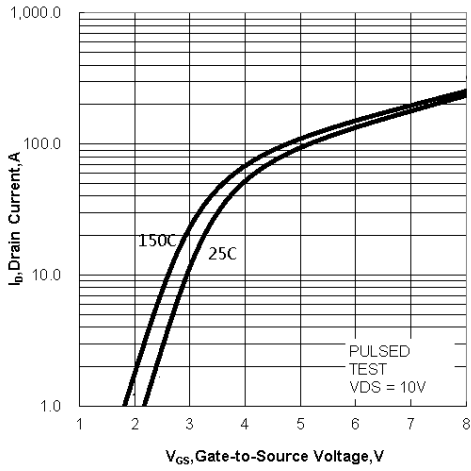


Figure 6. Typical Transfer Characteristics

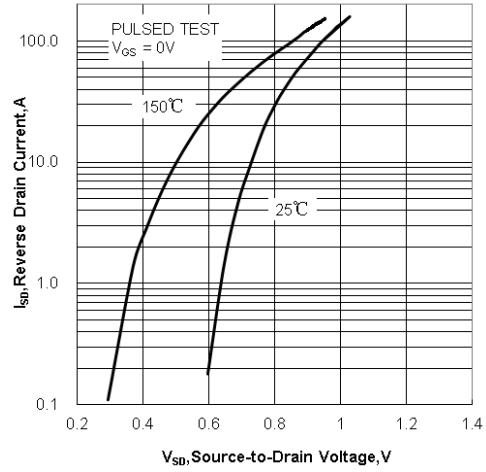


Figure 7. Typical Body Diode Transfer Characteristics

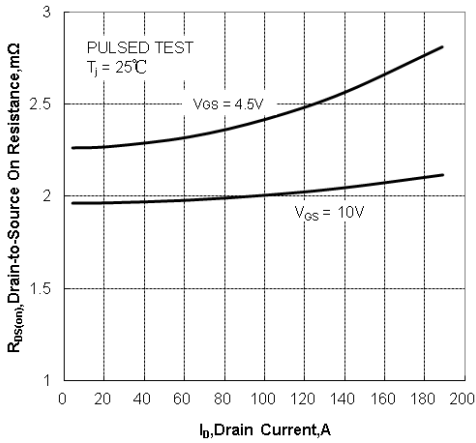


Figure 8. Drain-to-Source On Resistance vs Drain Current

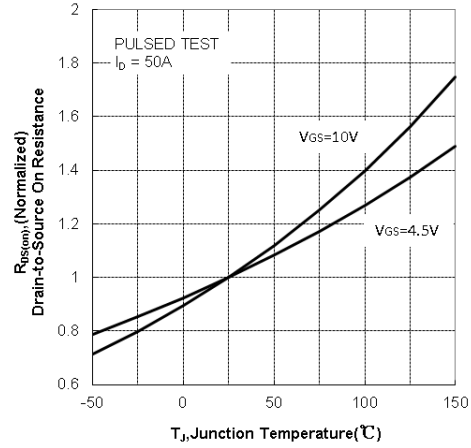


Figure 9. Normalized on Resistance vs Junction Temperature

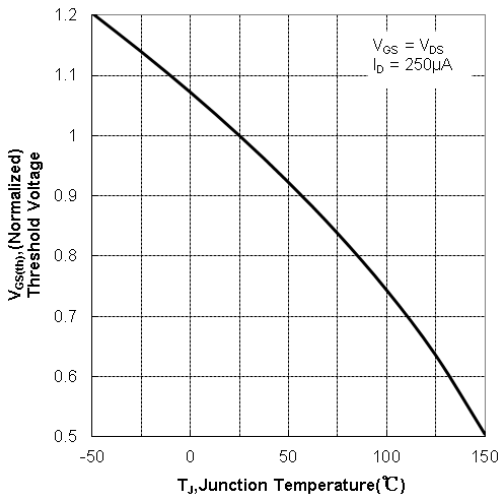


Figure 10. Normalized Threshold Voltage vs Junction Temperature

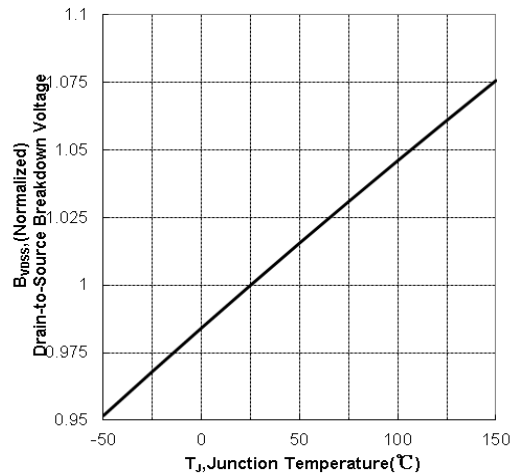


Figure 11. Normalized Breakdown Voltage vs Junction Temperature

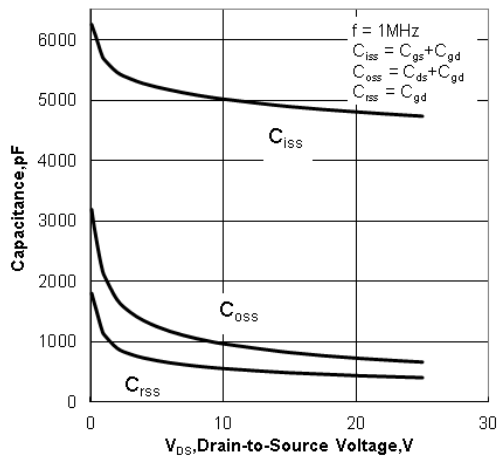


Figure12. Capacitance Characteristics

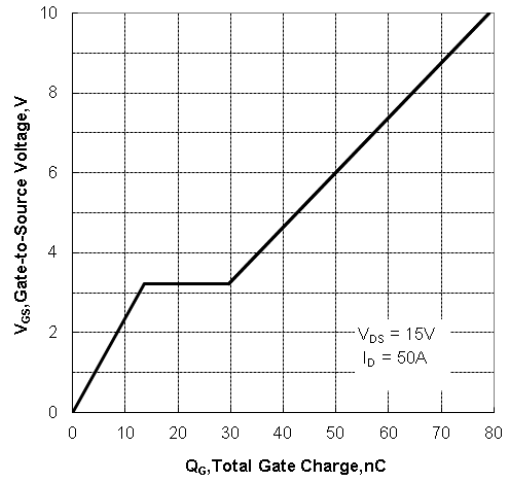


Figure13. Typical Gate Charge vs Gate to Source Voltage

**Test Circuit and Waveform**

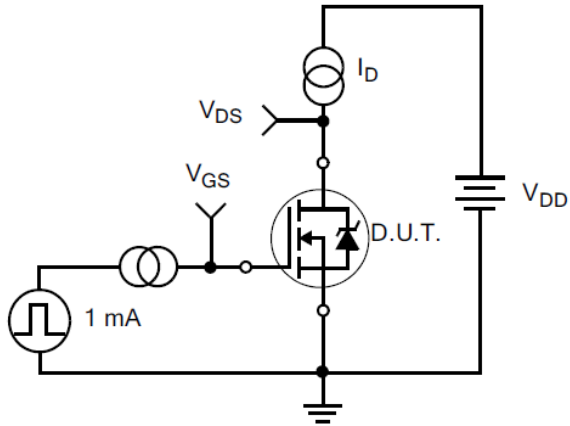


Figure 14. Gate Charge Test Circuit

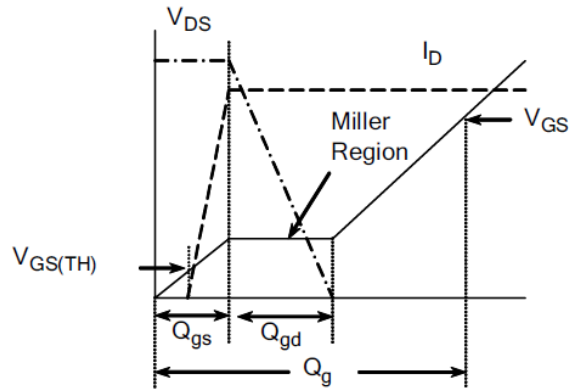


Figure 15. Gate Charge Waveforms



Figure 16. Resistive Switching Test Circuit

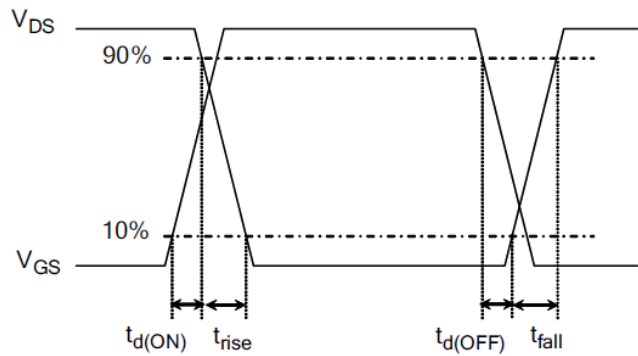


Figure 17. Resistive Switching Waveforms

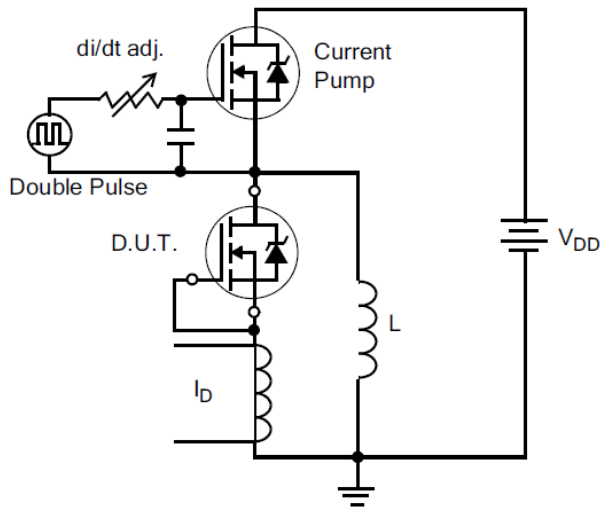


Figure 18. Diode Reverse Recovery Test Circuit

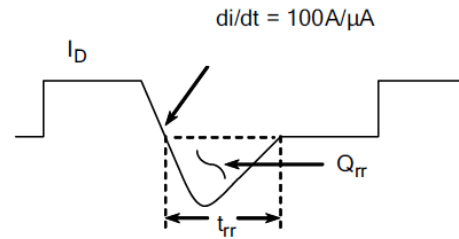


Figure 19. Diode Reverse Recovery Waveform

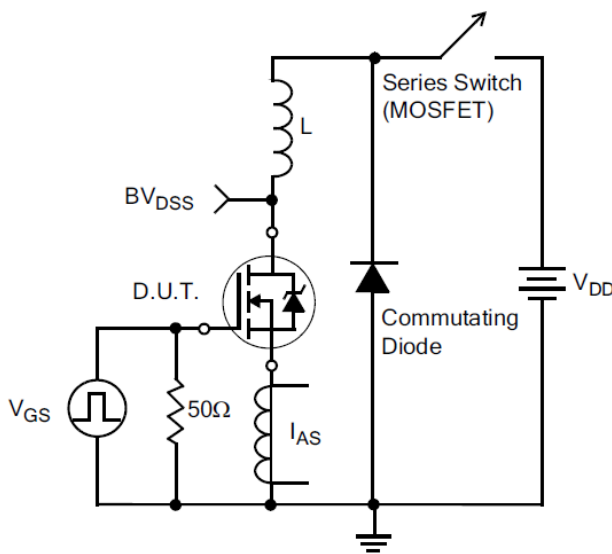


Figure 20. Unclamped Inductive Switching Test Circuit

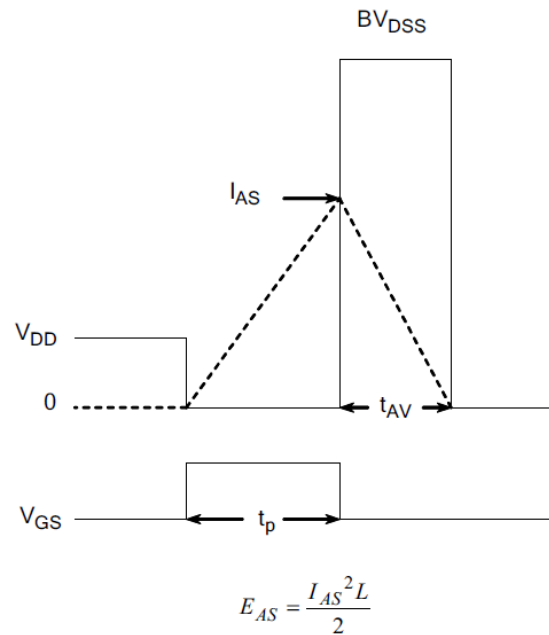
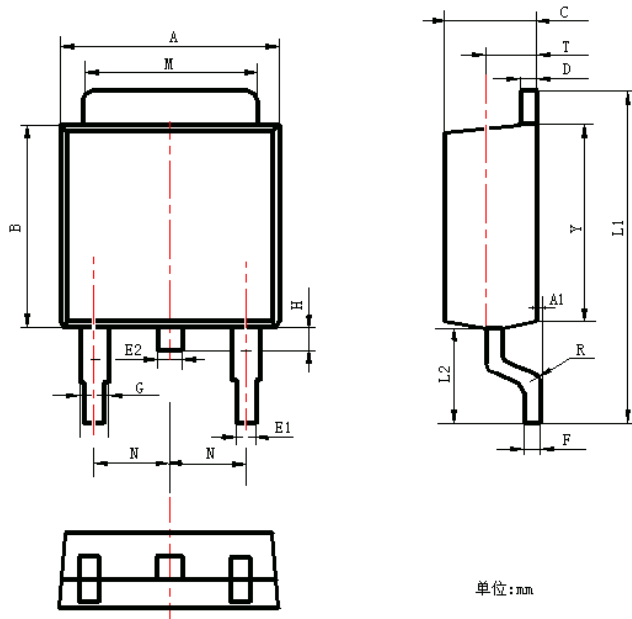


Figure 21. Unclamped Inductive Switching Waveform



**Package Information:**



Items	Values(mm)	
	MIN	MAX
A	6.30	6.90
A1	0	0.16
B	5.70	6.30
C	2.10	2.50
D	0.30	0.70
E1	0.60	0.90
E2	0.70	1.00
F	0.30	0.60
G	0.70	1.20
L1	9.60	10.50
L2	2.70	3.10
H	0.40	1.00
M	5.10	5.50
N	2.09	2.49
R	0.3	
T	1.40	1.60
Y	5.10	6.30

TO-252 Package

**The name and content of poisonous and harmful material in products**

	Hazardous Substance									
	Pb	Hg	Cd	Cr (VI)	PBB	PBDE	DIBP	DEHP	DBP	BBP
Limit	≤0.1%	≤0.1%	≤ 0.01%	≤0.1%	≤0.1%	≤0.1%	≤0.1%	≤0.1%	≤0.1%	≤0.1%
Lead Frame	○	○	○	○	○	○	○	○	○	○
Molding	○	○	○	○	○	○	○	○	○	○
Chip	○	○	○	○	○	○	○	○	○	○
Wire Bonding	○	○	○	○	○	○	○	○	○	○
Solder	×	○	○	○	○	○	○	○	○	○
Note	○: Means the hazardous material is under the criterion of 2011/65/EU. ×: Means the hazardous material exceeds the criterion of 2011/65/EU. The plumbum element of solder exist in products presently, but within the allowed range of Eurogroup's RoHS.									

**Warnings**

1. Exceeding the maximum ratings of the device in performance may cause damage to the device, even the permanent failure, which may affect the dependability of the machine. It is suggested to be used under 80 percent of the maximum ratings of the device.
2. When installing the heatsink, please pay attention to the torsional moment and the smoothness of the heatsink.
3. VDMOSFETs is the device which is sensitive to the static electricity, it is necessary to protect the device from being damaged by the static electricity when using it.
4. This publication is made by Huajing Microelectronics and subject to regular change without notice.

**WUXI CHINA RESOURCES HUAJING MICROELECTRONICS CO., LTD.**

**Add:** No.14 Liangxi RD. Wuxi, Jiangsu, China    **Mail:**214061    <http://www.crhj.com.cn>  
**Tel:** +86 0510-85807228    **Fax:** +86- 0510-85800864

**Marketing Part:**                      **Post:** 214061                      **Tel:** +86 0510-81805277/81805336  
**Fax:** +86 0510-85800360/85803016

**Application and Service:** **Post:** 214061    **Tel / Fax:** +86- 0510-81805243/81805110