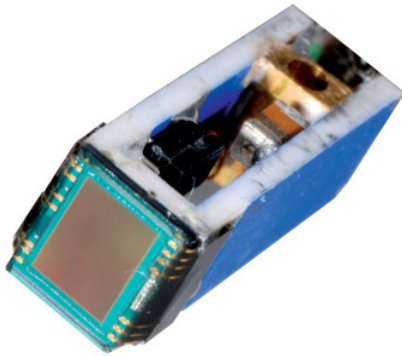


## CSH 16R2

1-CCD Color Video Camera head



Camera head CSH16R2

The OEM camerahead was designed for easy integration in customer systems. The CSH16R2 is a very small size solution. The various adaptable mainboards enable the CSH16R2 to be used in a wide range of applications, endo-/boroscopes with a diameter less than 6mm

### Features

- 1/6" CCD (ICX239EKW / ICX238EKW)
- Diameter < 4.9mm <sup>+0</sup><sub>-0.28</sub>
- High mechanical accuracy

### Applications

- Endoscopy, Dental
- Dermatology, Ophthalmology
- Image processing, Visualisation

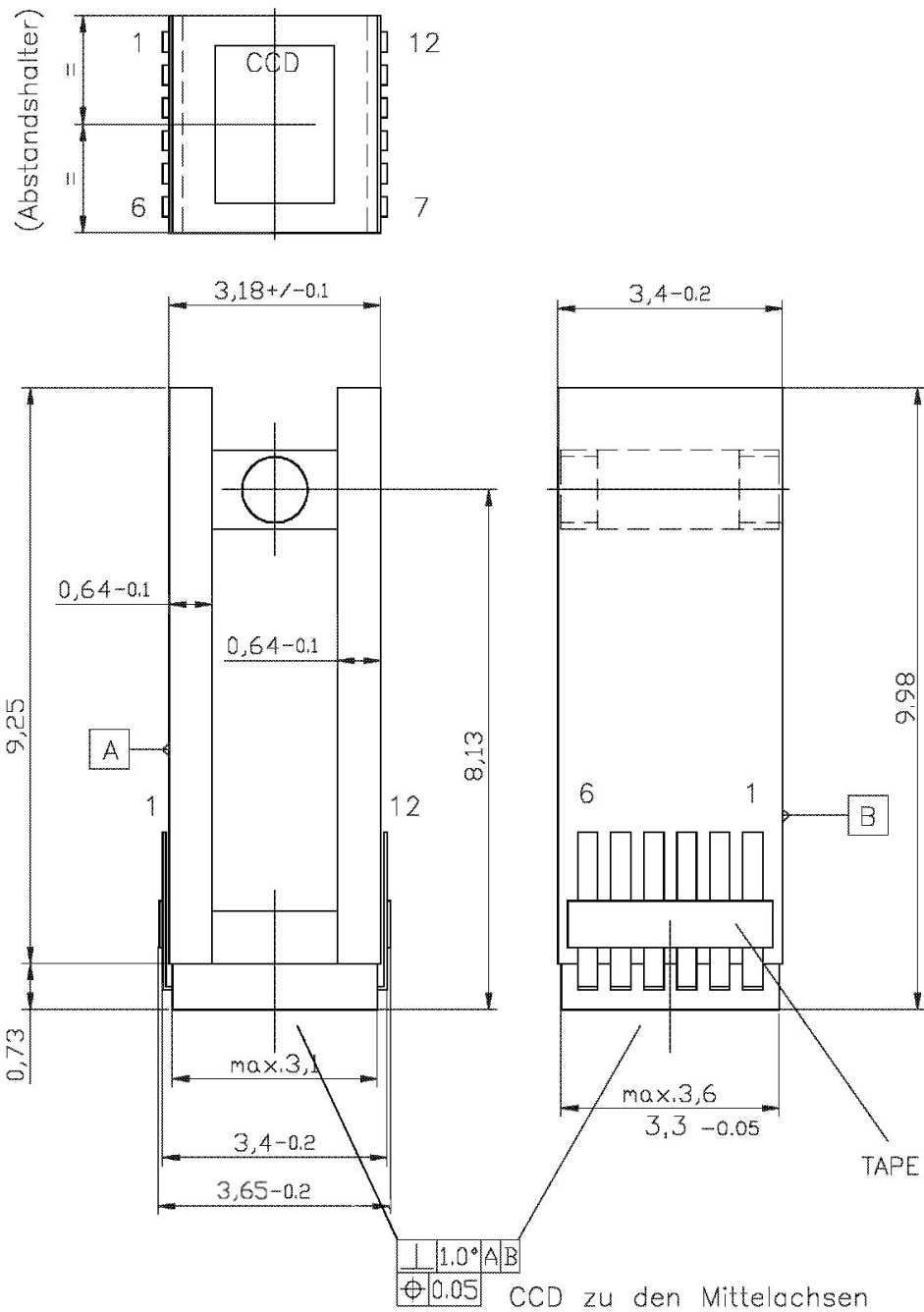
### Delivery Includes

- CSH16R2
- Cable 3m
- Option: special cable with additional function, termination with customer specific cennectors

### Specifications

	CSH16R2N	CSH16R2P
TV system	NTSC	PAL
Image sensor	IT 1/6" CCD	
Active Pixel	758(H)x492(V)	752(H)x582(V)
Active image area (H)x(V)mm	2.4 x 1.8	
Scanning Lines	525	625
Scanning system	2:1 Interlaced	
Scanning frequency horizontal	15.743kHz	15.625kHz
Scanning frequency vertical	59.94Hz	50Hz
Aspect ratio	4 : 3	
Sensitivity	280 mV	
Resolution horizontal	470 Lines	470 Lines
Resolution vertical	350 Lines	420 Lines
Environmental conditions	temperature : 0 to +40°C relative humidity : 30 to 90%	
Dimensions	see page 3	

Outline:



Design and Specifications are subject to change without notice

NET New Electronic Technology GmbH  
Lerchenberg 7  
86923 Finning, Germany  
Tel: +49 8806 9234 0  
Fax: +49 8806 9234 77  
info@net-gmbh.com  
www.net-gmbh.com

NET Italia S.r.l.  
Via Carlo Pisacane, 9  
25128 Brescia, Italy  
Tel: +39 030 5237 163  
Fax: +39 030 5033 293  
info@net-italia.it  
www.net-italia.it

NET USA, Inc.  
3037 45<sup>th</sup> Street  
Highland IN 46322, USA  
Tel: +1 219 934 9042  
Fax: +1 219 934 9047  
info@net-usa-inc.com  
www.net-usa-inc.com

NET Japan Co., Ltd.  
2F Shin-Yokohama 214 Bldg.  
2-14-2 Shin-Yokohama, Kohoku-ku,  
Yokohama-shi, 222-0033, Japan  
Tel: +81 45 478 1020  
Fax: +81 45 476 2423  
info@net-japan.com  
www.net-japan.com