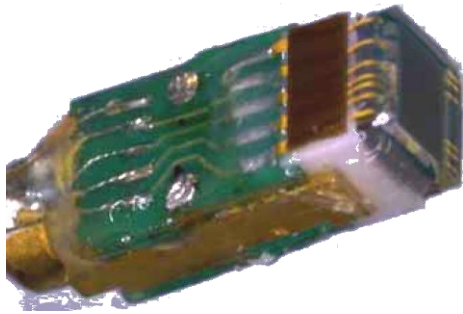


CSH6710

1-CCD Color Video Camera head



The OEM camerahead was designed for easy integration in customer systems. The CSH6710 is a small size solution.

The various adaptable main-boards enable the CSH6710 to be used in a wide range of applications, endo-/ boroscopes with dimension of 2.7 x 2.4 x 7.0 mm

Features

- 1/10" CCD (ICX257FKW / ICX256FKW)
- Dimension 2.7 x 2.4 x 7.0 mm
- High mechanical accuracy

Applications

- Endoscopy, Dental
- Dermatology, Ophthalmology
- Image processing, Visualisation

Delivery Includes

- CSH 6710
- Cable 3 m / 5m optional
- Option: termination with customer specific connectors

Specifications

	CSH6710	CSH6710P
TV system	NTSC	PAL
Image sensor	IT 1/10" CCD	
Active Pixel	510(H)x492(V)	500(H)x582(V)
Scanning Lines	525	625
Scanning system	2:1 Interlaced	
Scanning frequency horizontal	15.734kHz	15.625kHz
Scanning frequency vertical	59.94Hz	50Hz
Aspect ratio	4 : 3	
Sensitivity	300mV	
Environmental conditions	temperature relative humidity	: 0 to +40°C : 30 to 85%
Dimensions	see page 3,4	
Cable length	3.5 / 5m optional	
External dimension	2.7 x 2.4 x 7.0 mm	
Cable diameter	1.2mm	

