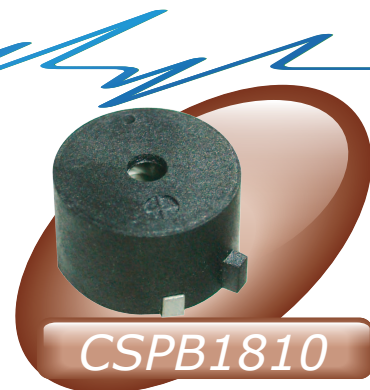
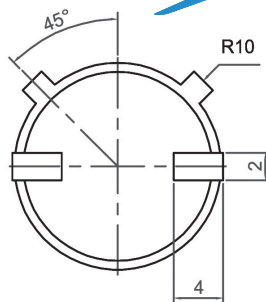
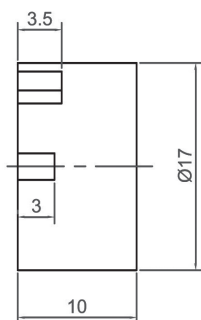
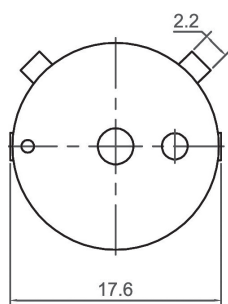


SMD Piezo Buzzer (DC)

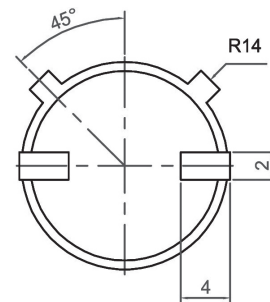
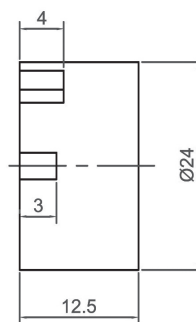
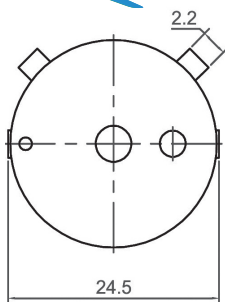


CSPB1810

Canopus Part no.	Operating Voltage (VDC)	Rated Voltage (VDC)	Max Rated Current (mA)	Min Sound Output (dBA)	Resonant Frequency (Hz)	Tone Nature	Operating Temperature (°C)	Housing	Weight (g)
CSPB1810HC40L	3 ~ 16	12	10	85 at 10cm	4000 ± 500	Continuous	-20 ~ +75	PPS	1.6



CSPB2412



Canopus Part no.	Operating Voltage (VDC)	Rated Voltage (VDC)	Max Rated Current (mA)	Min Sound Output (dBA)	Resonant Frequency (Hz)	Tone Nature	Operating Temperature (°C)	Housing	Weight (g)
CSPB2412HC34L	3 ~ 16	12	10	90 at 10cm	3400 ± 500	Continuous	-20 ~ +75	PPS	3.8

CANOPUS

Your Efficient Supplier
www.canopus.com.hk

TEL.: (852) 2806 2812

Fax: (852) 2652 2216