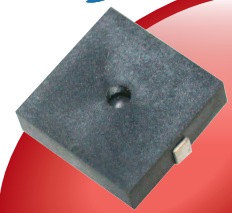
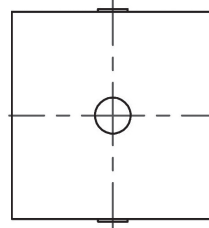
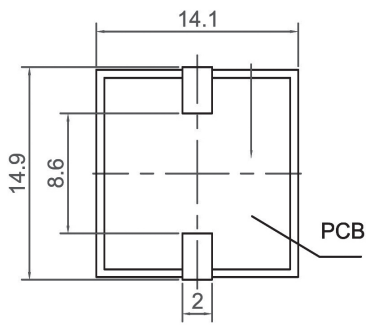
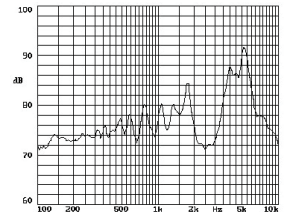


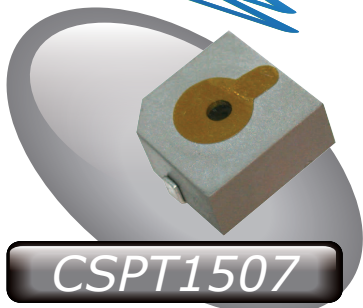
SMD External Drive Piezo Transducer (AC)



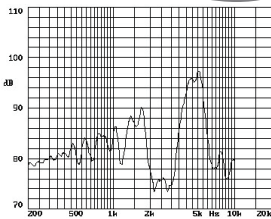
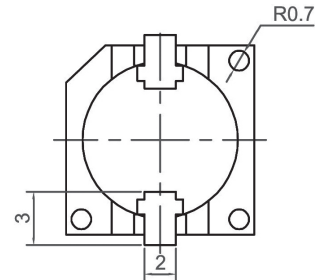
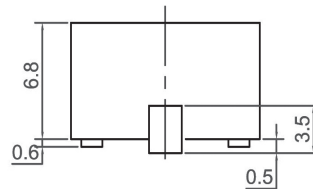
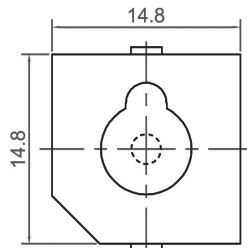
CSPT1404



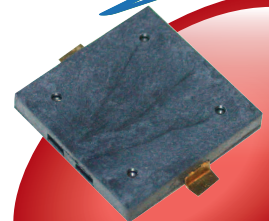
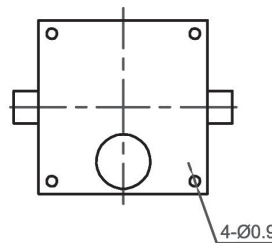
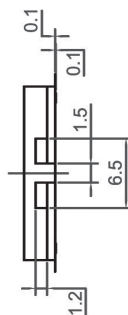
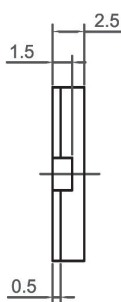
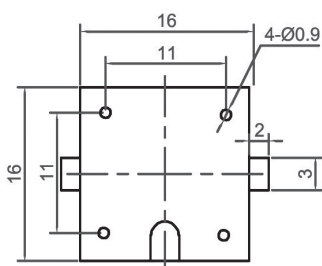
Canopus Part no.	Min sound Output (dBA)	Rated Voltage (V)	Max Input Voltage (V)	Resonant Frequency (Hz)	Capacitance (pF)	Operating Temperature (°C)	Housing	Weight (g)
CSPT1404E40L	75 AT 10cm	5 Vp-p	20 Vp-p	4000	20000 ± 30% at 120Hz	-20 ~ +60	PPS	0.8



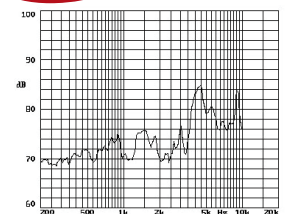
CSPT1507



Canopus Part no.	Min sound Output (dBA)	Rated Voltage (V)	Max Input Voltage (V)	Resonant Frequency (Hz)	Capacitance (pF)	Operating Temperature (°C)	Housing	Weight (g)
CSPT1507150L	85 AT 10cm	12 Vp-p	40 Vp-p	5000	12000 ± 30% at 120Hz	-20 ~ +70	PPS	2



CSPT1602-S



Canopus Part no.	Min sound Output (dBA)	Rated Voltage (V)	Max Input Voltage (V)	Resonant Frequency (Hz)	Capacitance (pF)	Operating Temperature (°C)	Housing	Weight (g)
CSPT1602C40LS	73 AT 10cm	3 Vp-p	25 Vp-p	4000	14000 ± 30% at 1000Hz	-20 ~ +70	PPS	1

CANOPUS

Your Efficient Supplier
www.canopus.com.hk

TEL.: (852) 2806 2812

Fax: (852) 2652 2216