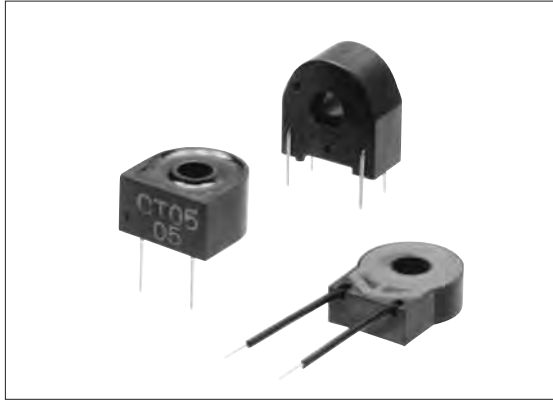


# Current Transformers Low Current Type



### Outline

This series of compact current transformers (current sensors) can be used for detecting very low current levels and overcurrent protection in electronic appliances.

### Features

- High sensitivity (detection of low current) and high performance.
- Compact, lightweight.
- Mountable on printed circuit boards.

### Applications

- Overcurrent detection in microcomputer-controlled equipment.
- Current detection in electric refrigerators, air conditioners and electromagnetic cookers.

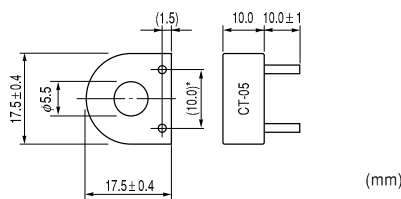
### Specifications

Product name	CT-05	CT-06	CT-07
Core	Permalloy	Permalloy	Permalloy
Lead wires	φ0.6 mm Pin connectors	Polyethylene sheath φ0.5 mm single wire	φ0.8 mm Pin connectors
Materials	Phenolic resin case, epoxy-filled	Phenolic resin case, silicon-filled	Phenolic resin case, epoxy-filled
Remarks	Compliance to RoHS directive	Compliance to RoHS directive	Compliance to RoHS directive

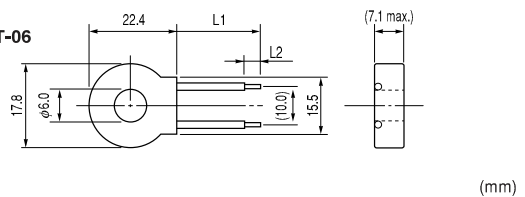
Notes: (1) The CT-05 has 500<sup>T</sup> as standard.  
 (2) In the standard lineup there are three types of CT-06, depending on differences in secondary windings.  
 (3) In the standard lineup there are two types of CT-07, depending on differences in secondary windings.

### Shape and Dimensions

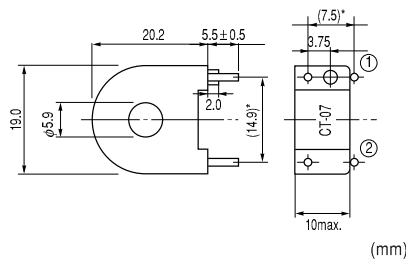
#### ● CT-05



#### ● CT-06



#### ● CT-07



Product name	L1(±5)	L2(±2)
CT-06-50	56.0	4.0
CT-06-75	85.0	5.0

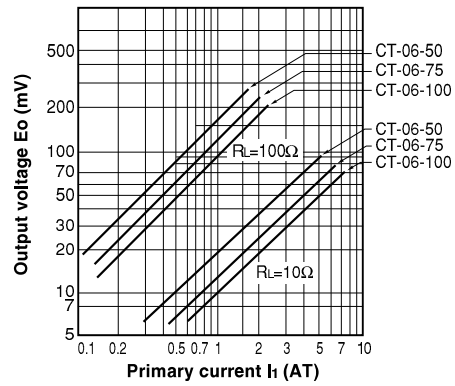
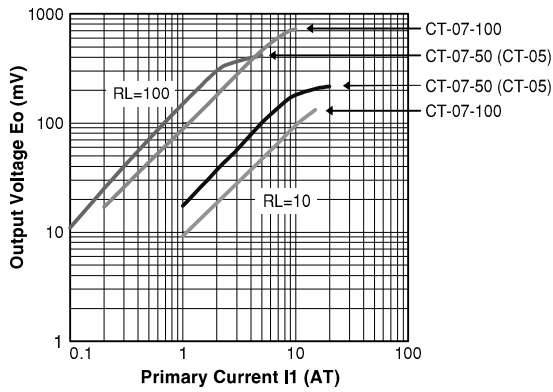
\* Tolerance ±0.3  
 \* Pin root diameter.



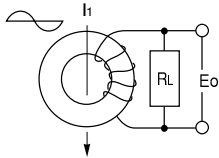
● All specifications in this catalog and production status of products are subject to change without notice. Prior to the purchase, please contact NEC TOKIN for updated product data.  
 ● Please request for a specification sheet for detailed product data prior to the purchase.  
 ● Before using the product in this catalog, please read "Precautions" and other safety precautions listed in the printed version catalog.

**Output Characteristics**

- CT-05, CT-07 AC output characteristics (example)
- CT-06 AC output characteristics (example)



• **Measuring circuit**



$I_1$  : Primary current (AT)  
 $R_L$  : Load resistance ( $\Omega$ )  
 $E_o$  : Output voltage (mV rms)

**Before Using Current Transformers Low Current Type**

- The core may be damaged if applied with a strong impact. Carefully avoid dropping or applying any other strong impacts.
- Preliminary study is needed with regard to heating by current conduction.
- Do not use the current transformer opened between secondary output terminals.  
 In the worst case, heat build-up in the magnetic core may occur, resulting in damages to the parts by the melting of coil due to this heat.



● All specifications in this catalog and production status of products are subject to change without notice. Prior to the purchase, please contact NEC TOKIN for updated product data.  
 ● Please request for a specification sheet for detailed product data prior to the purchase.  
 ● Before using the product in this catalog, please read "Precautions" and other safety precautions listed in the printed version catalog.