

CTLSH4-200M364

SURFACE MOUNT SILICON
LOW V_F
SCHOTTKY RECTIFIER

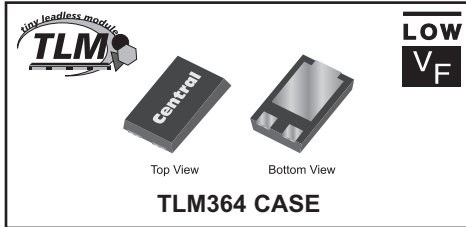


www.centrasemi.com

DESCRIPTION:

The CENTRAL SEMICONDUCTOR CTLSH4-200M364 is a high performance 4.0 Amp silicon Schottky rectifier designed for applications requiring high voltage capability and high levels of efficiency in a low profile package.

MARKING CODE: CTLSH420



APPLICATIONS:

- DC-DC converters
- Reverse polarity protection
- By-pass diode

FEATURES:

- Low forward voltage
- Low reverse leakage current
- Low profile package

MAXIMUM RATINGS: ($T_A=25^\circ\text{C}$)

Peak Repetitive Reverse Voltage
DC Blocking Voltage
RMS Reverse Voltage
Average Forward Current ($T_L=125^\circ\text{C}$)
Peak Forward Surge Current, $t_p=8.3\text{ms}$
Operating and Storage Junction Temperature
Thermal Resistance (Note 1)
Thermal Resistance

SYMBOL		UNITS
V_{RRM}	200	V
V_R	200	V
$V_{R(RMS)}$	140	V
I_O	4.0	A
I_{FSM}	100	A
T_J, T_{stg}	-55 to +150	$^\circ\text{C}$
Θ_{JA}	80	$^\circ\text{C/W}$
Θ_{JL}	15	$^\circ\text{C/W}$

ELECTRICAL CHARACTERISTICS: ($T_A=25^\circ\text{C}$ unless otherwise noted)

SYMBOL	TEST CONDITIONS	MIN	TYP	MAX	UNITS
I_R	$V_R=200\text{V}$		0.15	1.0	μA
I_R	$V_R=200\text{V}, T_A=125^\circ\text{C}$		0.35	10	mA
BV_R	$I_R=500\mu\text{A}$	200			V
V_F	$I_F=4.0\text{A}$		0.76	0.84	V
C_J	$V_R=4.0\text{V}, f=1.0\text{MHz}$		140		pF

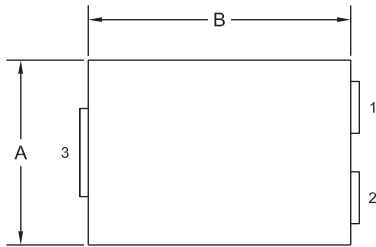
Notes: (1) FR-4 epoxy PCB with minimum copper pad area.

R1 (4-January 2013)

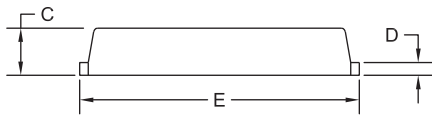
CTLSH4-200M364
SURFACE MOUNT SILICON
LOW V_F
SCHOTTKY RECTIFIER



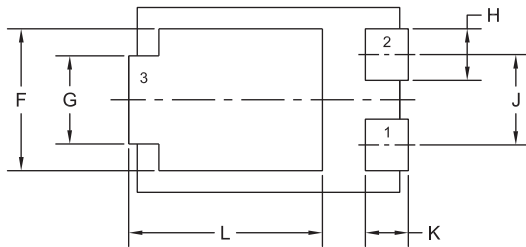
TLM364 CASE - MECHANICAL OUTLINE



TOP VIEW



SIDE VIEW

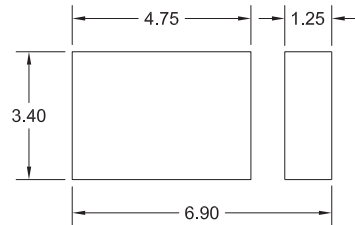


BOTTOM VIEW R0

SYMBOL	INCHES		MILLIMETERS	
	MIN	MAX	MIN	MAX
A	0.167	0.172	4.25	4.35
B	0.238	0.243	6.05	6.15
C	0.039	0.048	1.00	1.20
D	0.009	0.014	0.25	0.35
E	0.250	0.262	6.35	6.65
F	0.128	0.136	3.25	3.45
G	0.076	0.085	1.95	2.15
H	0.044	0.052	1.10	1.30
J	0.083		2.10	
K	0.035	0.044	0.90	1.10
L	0.171	0.183	4.35	4.65

TLM364 (REV:R0)

SUGGESTED MOUNTING PADS
(Dimensions in mm)



R0

LEAD CODE:

- 1) Anode
- 2) Anode
- 3) Cathode

MARKING CODE: CTLSH420

R1 (4-January 2013)

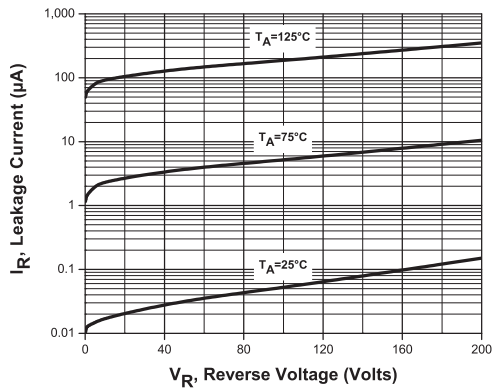
CTLSH4-200M364

SURFACE MOUNT SILICON
LOW V_F
SCHOTTKY RECTIFIER

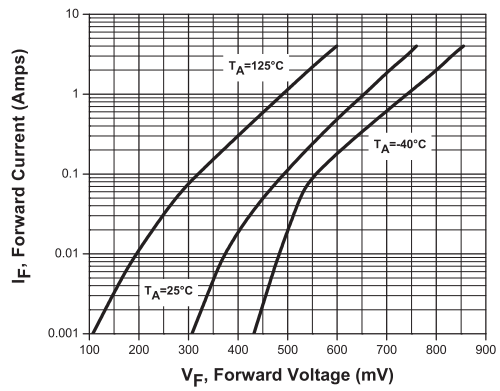


TYPICAL ELECTRICAL CHARACTERISTICS

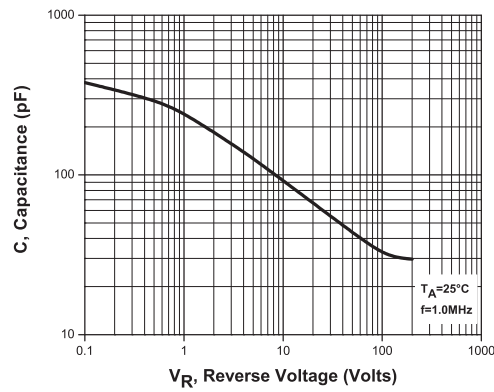
Typical Leakage Characteristics



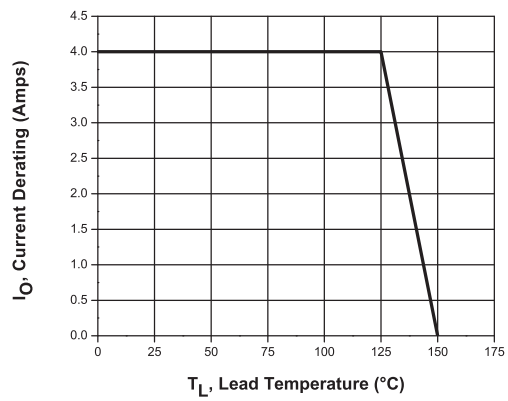
Typical Forward Voltage



Typical Capacitance



Current Derating



R1 (4-January 2013)