

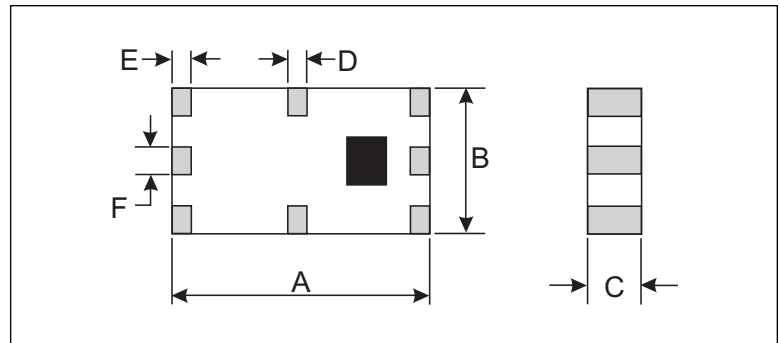
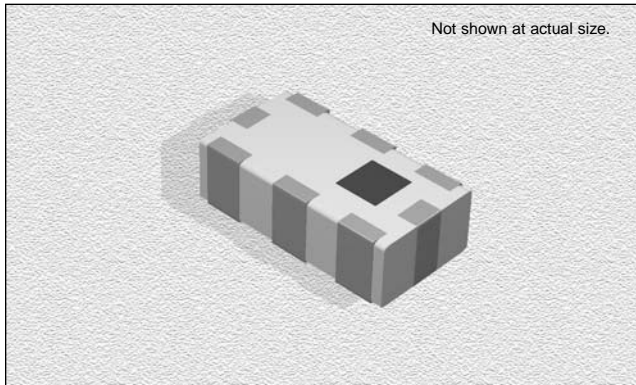
## CTMCA1105 Series

### SPECIFICATIONS

Part Number	Frequency Range (MHz)	Peak Gain (XZ-V)	Average Gain (XZ-V)	Return Loss	Impedance ( $\Omega$ )
CTMCA1105-R92	880-960	-0.7 dBi typ.	-2.9 dBi typ.	8.5 dB min.	50

### PHYSICAL DIMENSIONS

Size	A	B	C	D	E	F
mm	11.0±0.30	5.10±0.30	1.50±0.20	0.50±0.30	0.50±0.30	1.00±0.20
inches	0.433±0.012	0.201±0.012	0.059±0.008	0.020±0.012	0.020±0.012	0.039±0.008



### CHARACTERISTICS

**Description:** Multi-layer Chip Antenna

**Features:** Monolithic SMD type. Wide bandwidth

**Applications:** WLAN, Home RF, Bluetooth Modules, etc.

**Operating Temperature:** -40°C to +85°C

**Input Power:** 5W Max.

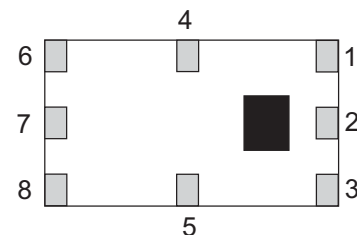
**Packaging:** Tape & Reel

**Additional Information:** Additional electrical & physical information available upon request

**Samples available. See website for ordering information.**

### TERMINAL CONFIGURATION

No.	Function
1	NC
2	Feed Point
3	NC
4	NC
5	NC
6	NC
7	NC
8	NC

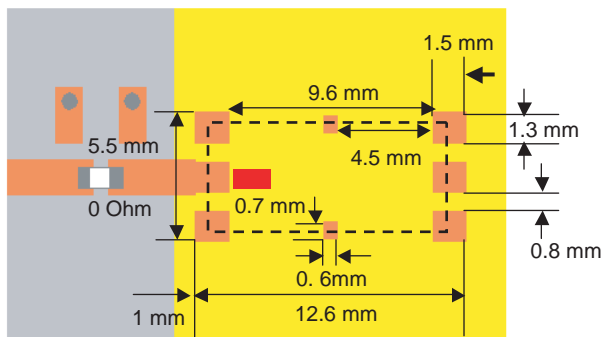


### Mounting Considerations

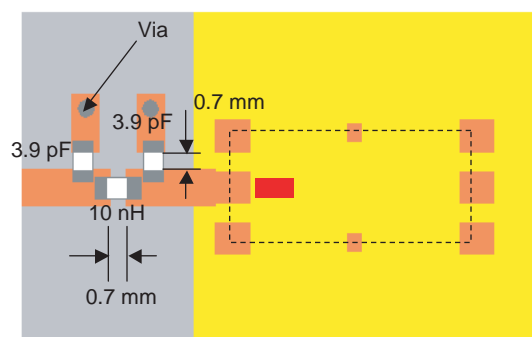
Mount these devices with brown mark facing up. Units: mm

Line width should be designed to provide 50Ω impedance matching characteristics.

a) Without Matching Circuits

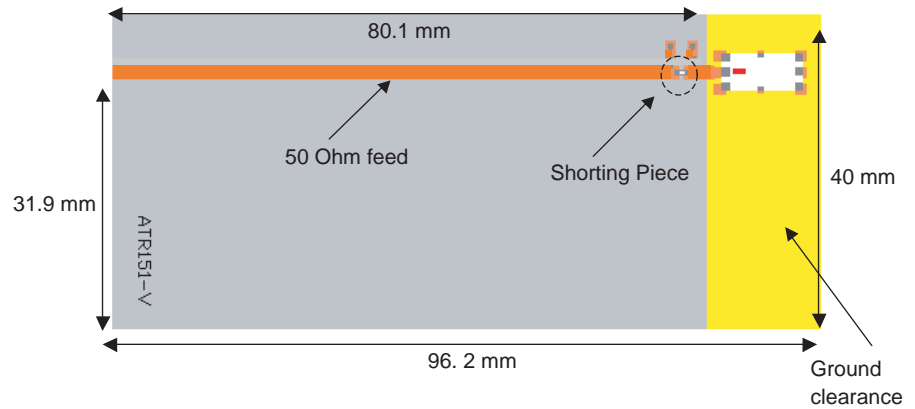


b) With Matching Circuits



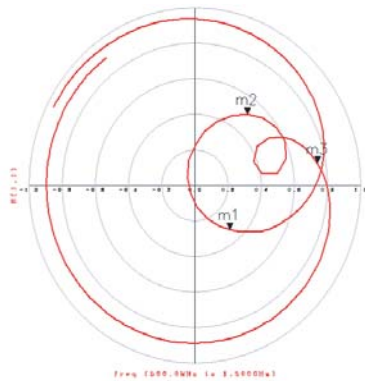
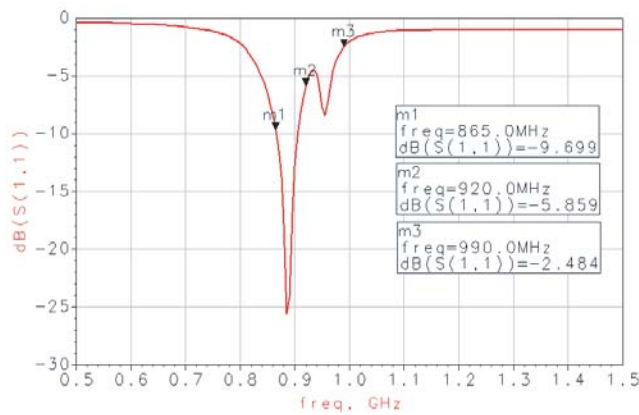
### Typical Electrical Characteristics (T=25°C)

Test Board:



Return Loss

a) Without Matching Circuit

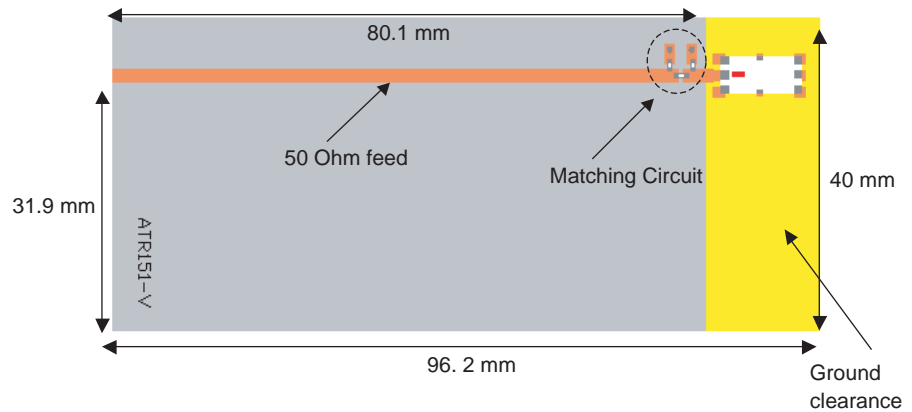


www.DataSheet4U.com

02.08.05

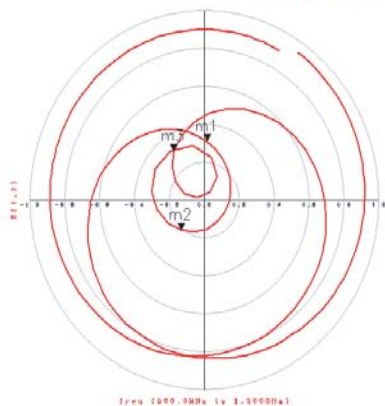
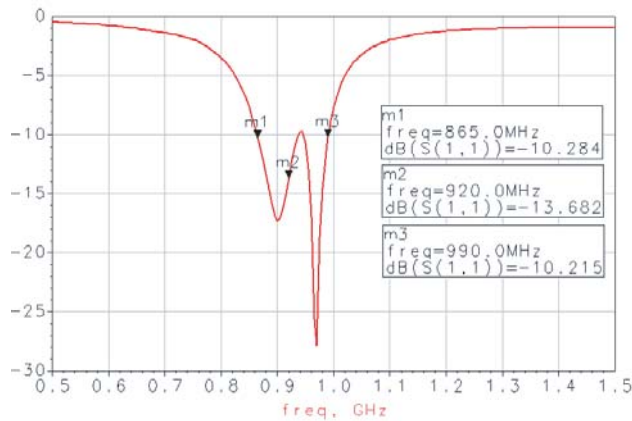
### Typical Electrical Characteristics (T=25°C)

Test Board:



Return Loss

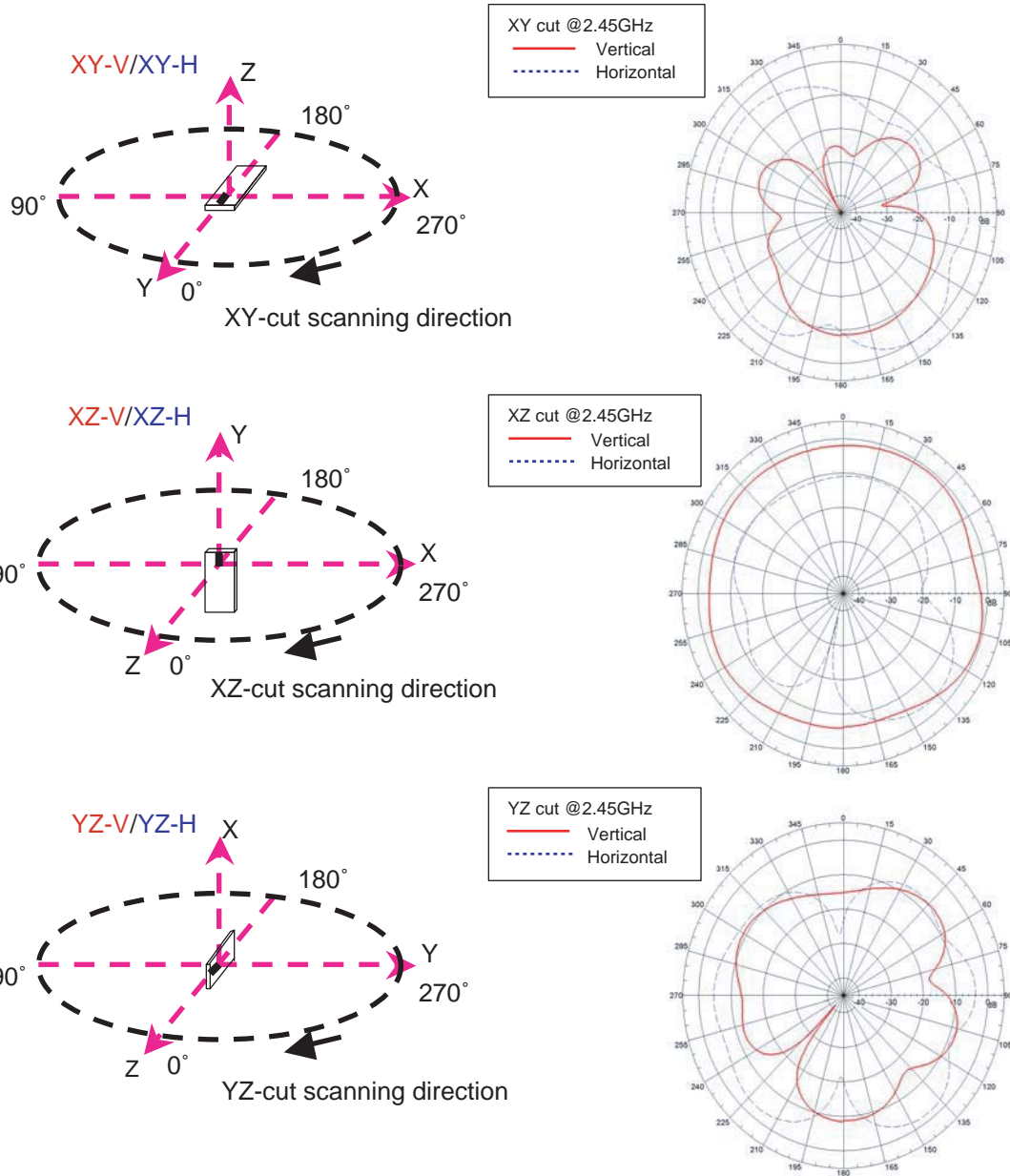
b) With Matching Circuit



www.DataSheet4U.com

02.08.05

### Typical Radiation Patterns



02.08.05