

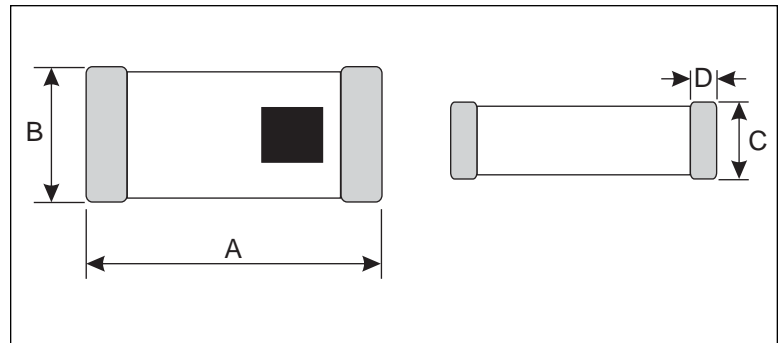
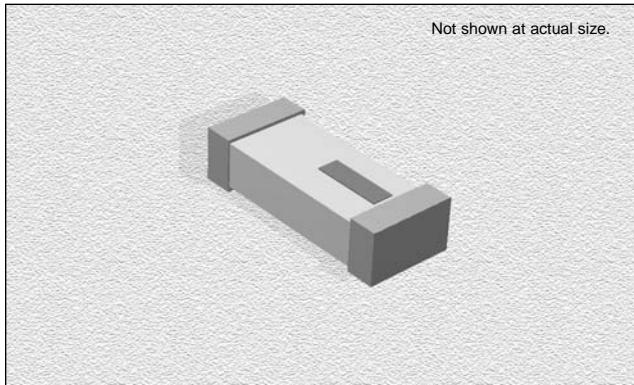
CTMCA5020 Series

SPECIFICATIONS

Part Number	Frequency Range (MHz)	Peak Gain (XZ-V)	Average Gain (XZ-V)	Return Loss	Impedance (Ω)
CTMCA5020-2R4	2400~2500	0 dBi typ.	-1 dBi typ.	9.5 dB min.	50

PHYSICAL DIMENSIONS

Size	A	B	C	D
mm	5.00±0.20	2.00±0.20	1.10±0.20	0.5±0.30
inches	0.197±0.008	0.079±0.008	0.043±0.008	0.020±0.012



CHARACTERISTICS

Description: Multi-layer Chip Antenna

Features: Monolithic SMD type. Wide bandwidth

Applications: WLAN, Home RF, Bluetooth Modules, etc.

Operating Temperature: -40°C to +85°C

Input Power: 3 Watts Max.

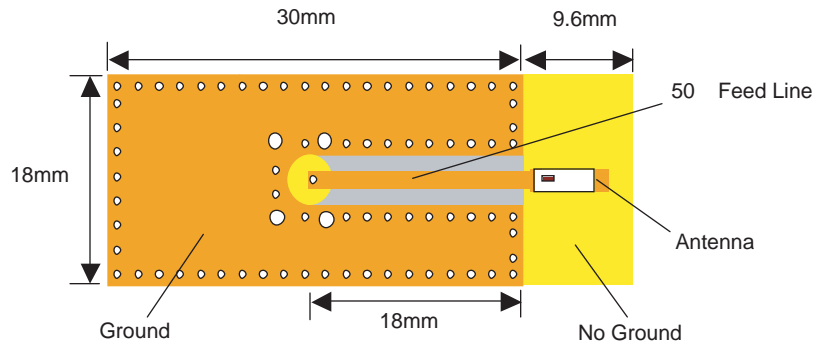
Packaging: Tape & Reel

Additional Information: Additional electrical & physical information available upon request

Samples available. See website for ordering information.

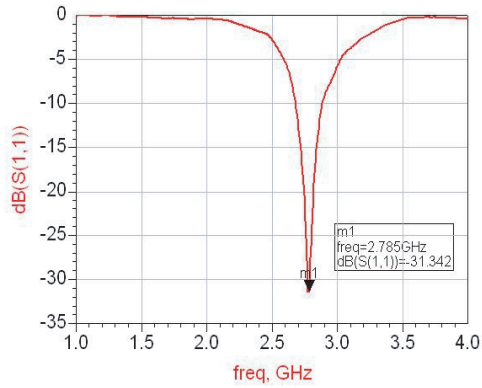
Typical Electrical Characteristics (T=25°C)

Test Board:

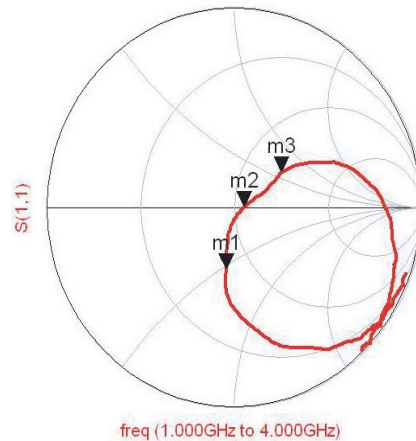
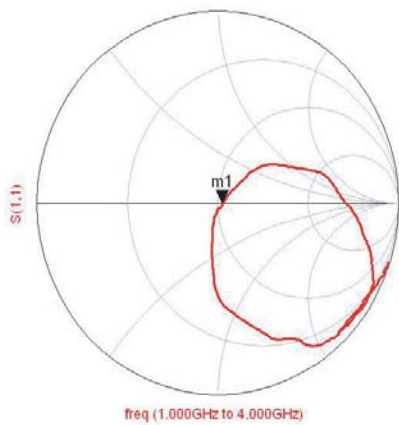
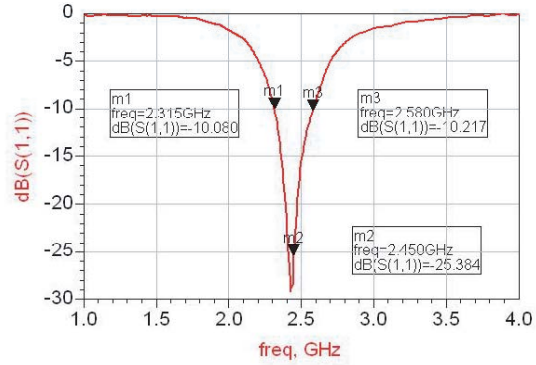


Return Loss

a) Without Matching Circuits



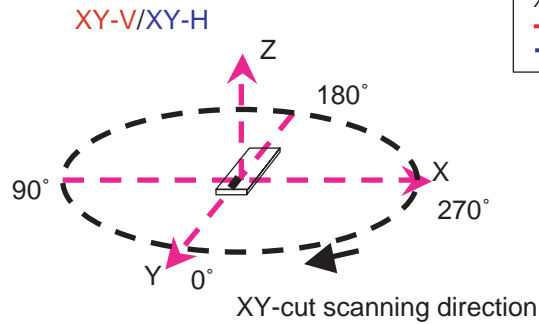
b) With Matching Circuits



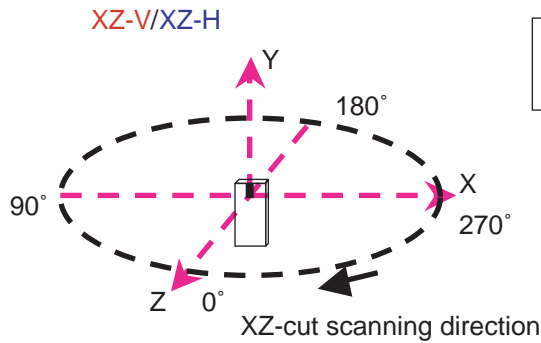
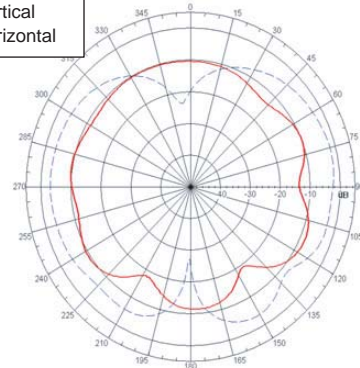
www.DataSheet4U.com

02.07.05

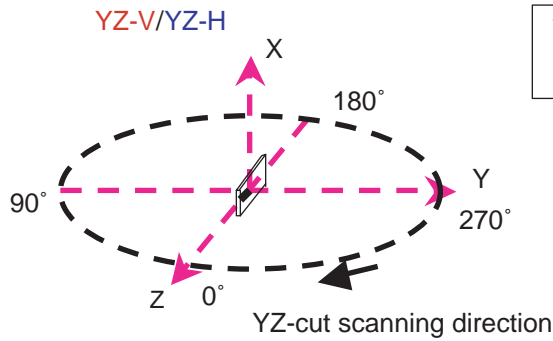
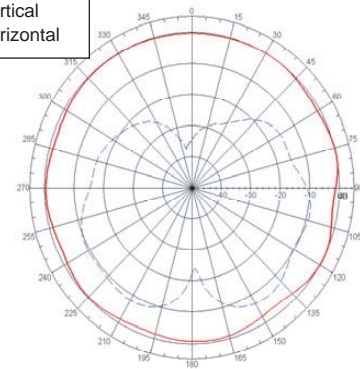
Typical Radiation Patterns



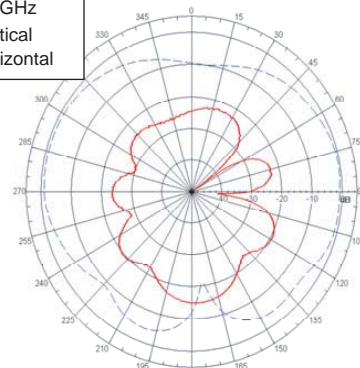
XY cut @2.45GHz
 — Vertical
 Horizontal



XZ cut @2.45GHz
 — Vertical
 Horizontal



YZ cut @2.45GHz
 — Vertical
 Horizontal



www.DataSheet4U.com

02.07.05



Manufacturer of Inductors, Chokes, Coils, Beads, Transformers & Toroids

800-684-5322 Inside US 949-453-1811 Outside US

Copyright © 2005 by CT Magnetics, DBA Central Technologies. All rights reserved.

CT Magnetics reserves the right to make improvements or change specifications without notice