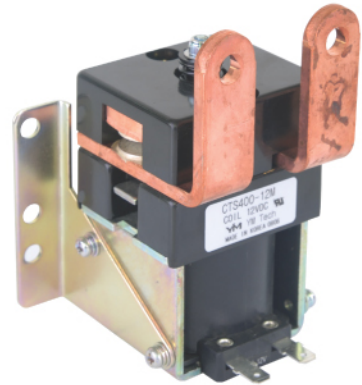




CTS400 Series

CTS200, 300, 400



CTS400 Series

코일정격 (Magnet coil ratings)

Nominal voltage(V)	Item	Nominal current (mA)	Coil resistance (Ω)	Pull-in voltage (V)	Drop-out voltage (V)	Max. voltage (V)	Coil power(W) dissipation
DC	110	144	760	70% max.	10% min.	110%	12 to 18
	60	240	250				
	48	300	160				
	24	600	40				
	12	1,200	10				
	6	2,400	2.5				

Notes : 1. Nominal current and coil resistance are measured at +20°C.
 2. Differences of coil resistance are ±15%.
 3. Performance characteristic coil temperature is measured at 20°C.

접점정격 (Contact ratings)

(60VDC)

Item	Type	1Pole Resistive load (cosφ = 1)		
		CTS200	CTS300	CTS400
Max. switching current		200A	300A	400A
Max. switching voltages		60VDC	60VDC	60VDC
Max. switching capacity		12000W	18000W	24000W
Voltage drop across contacts per 100A		40mV max.		
Description		S.P On/Off		

주문방법 (Ordering information)

CTT 400 M A - 48 S 1

CTT: Type
 400: 400(A)
 300: 300(A)
 200: 200(A)

M: Arc Magnetic blowouts

A: Aux contacts

48: Coil Rated voltage(DC)
 6, 12, 24, 36, 48, 60, 72, 80, 100/110V

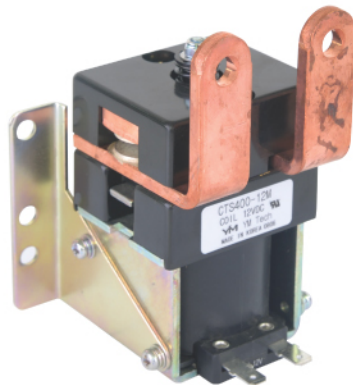
S: Coil surge suppressors

Coil surge suppressors	
S	Basic type
Z	teansient voltage suppressor
D	interior diodes
DR	diodes & resistors

1: Bracket No.

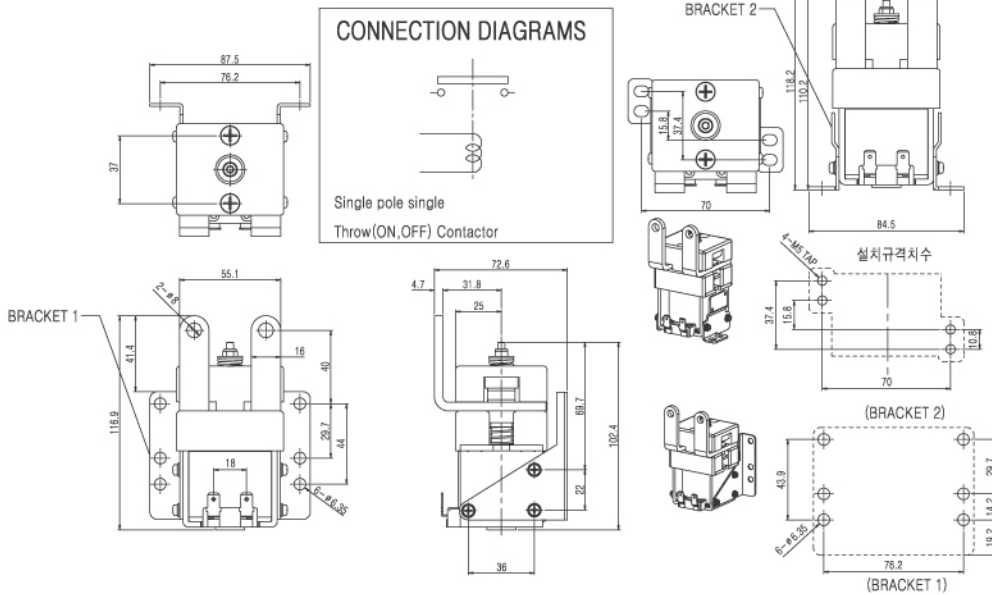
CTS400 Series

CTS200, 300, 400

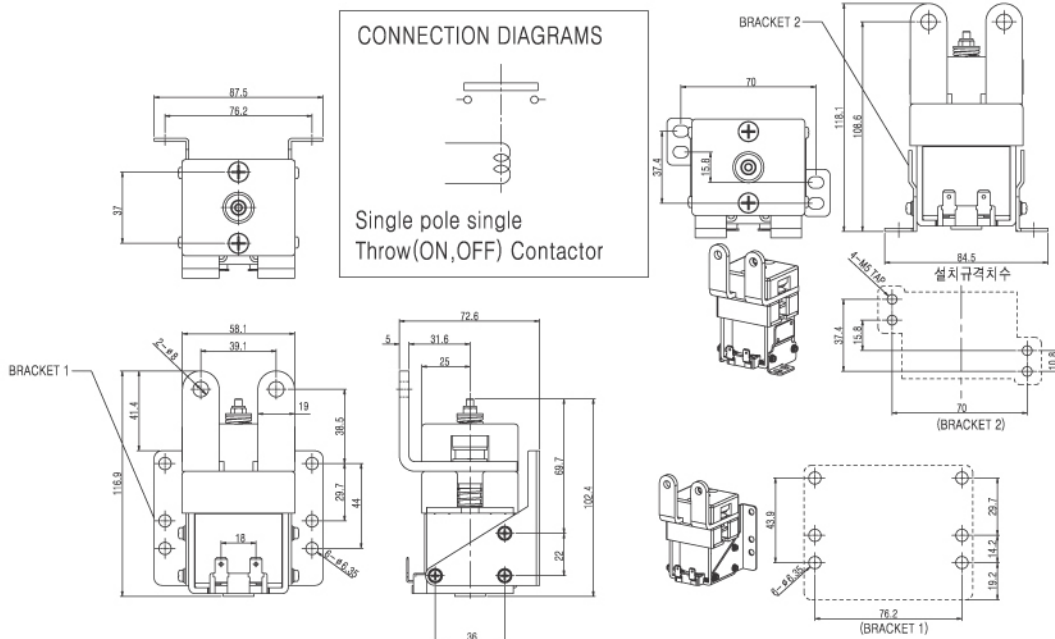


외형치수도 (Dimension in mm)

CTS200



CTS300, CTS400



CTS400 Series