

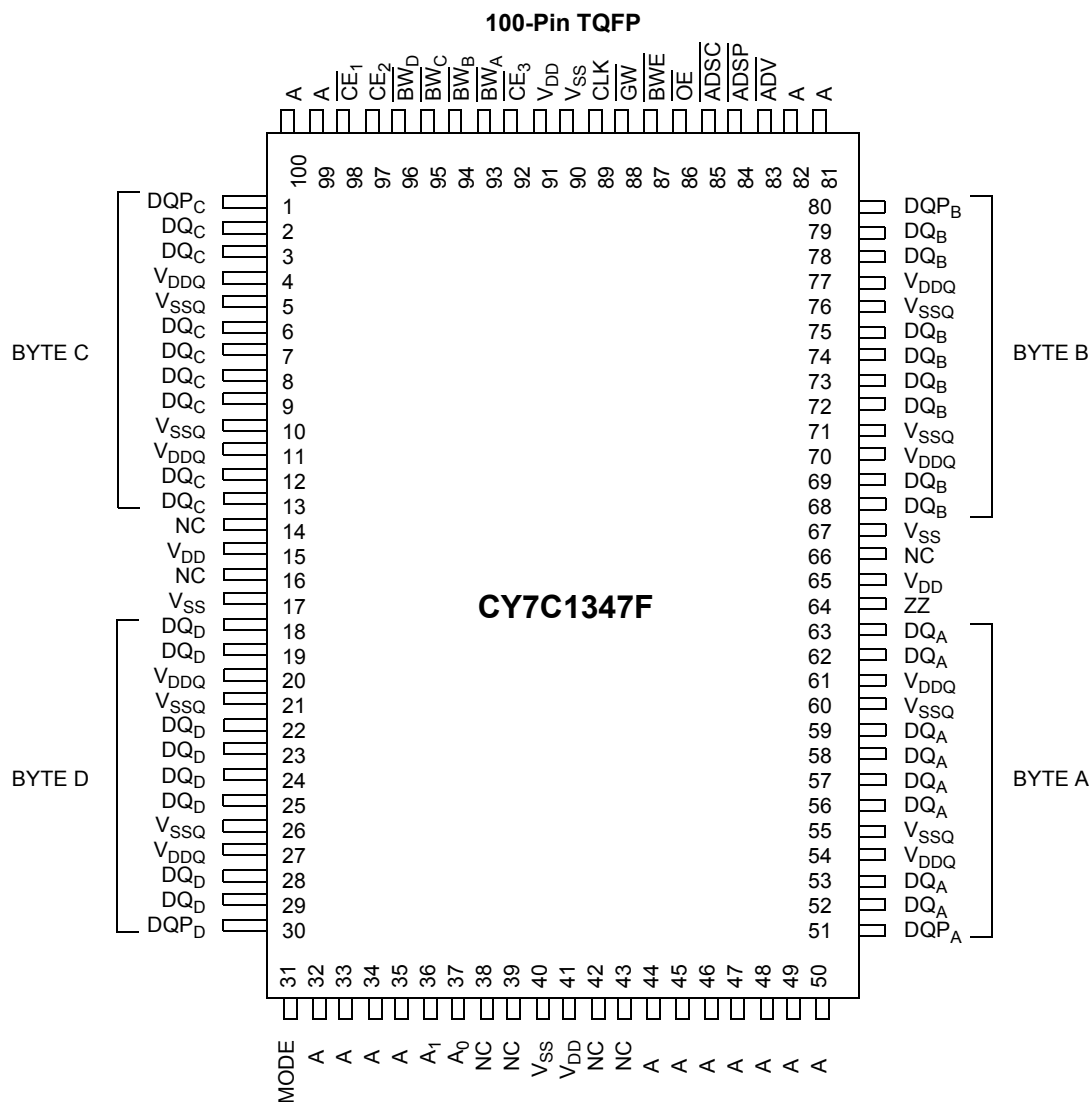


Selection Guide

| | -250 | -225 | -200 | -166 | -133 | Unit |
|------------------------------|------|------|------|------|------|------|
| Maximum Access Time | 2.6 | 2.6 | 2.8 | 3.5 | 4.0 | ns |
| Maximum Operating Current | 325 | 290 | 265 | 240 | 225 | mA |
| Maximum CMOS Standby Current | 40 | 40 | 40 | 40 | 40 | mA |

Shaded areas contain advance information. Please contact your local Cypress Sales representative for availability of these parts.

Pin Configurations





Pin Configurations (continued)

119-Ball BGA

| | 1 | 2 | 3 | 4 | 5 | 6 | 7 |
|----------|------------------|------------------|--------------------------|--------------------------|--------------------------|--------------------------|------------------|
| A | V _{DDQ} | A | A | $\overline{\text{ADSP}}$ | A | A | V _{DDQ} |
| B | NC | CE ₂ | A | $\overline{\text{ADSC}}$ | A | $\overline{\text{CE}}_3$ | NC |
| C | NC | A | A | V _{DD} | A | A | NC |
| D | DQ _C | DQP _C | V _{SS} | NC | V _{SS} | DQP _B | DQ _B |
| E | DQ _C | DQ _C | V _{SS} | $\overline{\text{CE}}_1$ | V _{SS} | DQ _B | DQ _B |
| F | V _{DDQ} | DQ _C | V _{SS} | $\overline{\text{OE}}$ | V _{SS} | DQ _B | V _{DDQ} |
| G | DQ _C | DQ _C | $\overline{\text{BW}}_C$ | $\overline{\text{ADV}}$ | $\overline{\text{BW}}_B$ | DQ _B | DQ _B |
| H | DQ _C | DQ _C | V _{SS} | $\overline{\text{GW}}$ | V _{SS} | DQ _B | DQ _B |
| J | V _{DDQ} | V _{DD} | NC | V _{DD} | NC | V _{DD} | V _{DDQ} |
| K | DQ _D | DQ _D | V _{SS} | CLK | V _{SS} | DQ _A | DQ _A |
| L | DQ _D | DQ _D | $\overline{\text{BW}}_D$ | NC | $\overline{\text{BW}}_A$ | DQ _A | DQ _A |
| M | V _{DDQ} | DQ _D | V _{SS} | $\overline{\text{BWE}}$ | V _{SS} | DQ _A | V _{DDQ} |
| N | DQ _D | DQ _D | V _{SS} | A1 | V _{SS} | DQ _A | DQ _A |
| P | DQ _D | DQP _D | V _{SS} | A0 | V _{SS} | DQP _A | DQ _A |
| R | NC | A | MODE | V _{DD} | NC | A | NC |
| T | NC | NC | A | A | A | NC | ZZ |
| U | V _{DDQ} | NC | NC | NC | NC | NC | V _{DDQ} |

165-Ball fBGA

| | 1 | 2 | 3 | 4 | 5 | 6 | 7 | 8 | 9 | 10 | 11 |
|----------|------------------|-----------------|--------------------------|--------------------------|--------------------------|--------------------------|-------------------------|--------------------------|--------------------------|-----------------|------------------|
| A | NC | A | $\overline{\text{CE}}_1$ | $\overline{\text{BW}}_C$ | $\overline{\text{BW}}_B$ | $\overline{\text{CE}}_3$ | $\overline{\text{BWE}}$ | $\overline{\text{ADSC}}$ | $\overline{\text{ADV}}$ | A | NC |
| B | NC | A | CE ₂ | $\overline{\text{BW}}_D$ | $\overline{\text{BW}}_A$ | CLK | $\overline{\text{GW}}$ | $\overline{\text{OE}}$ | $\overline{\text{ADSP}}$ | A | NC |
| C | DQP _C | NC | V _{DDQ} | V _{SS} | V _{SS} | V _{SS} | V _{SS} | V _{SS} | V _{DDQ} | NC | DQP _B |
| D | DQ _C | DQ _C | V _{DDQ} | V _{DD} | V _{SS} | V _{SS} | V _{SS} | V _{DD} | V _{DDQ} | DQ _B | DQ _B |
| E | DQ _C | DQ _C | V _{DDQ} | V _{DD} | V _{SS} | V _{SS} | V _{SS} | V _{DD} | V _{DDQ} | DQ _B | DQ _B |
| F | DQ _C | DQ _C | V _{DDQ} | V _{DD} | V _{SS} | V _{SS} | V _{SS} | V _{DD} | V _{DDQ} | DQ _B | DQ _B |
| G | DQ _C | DQ _C | V _{DDQ} | V _{DD} | V _{SS} | V _{SS} | V _{SS} | V _{DD} | V _{DDQ} | DQ _B | DQ _B |
| H | NC | V _{SS} | NC | V _{DD} | V _{SS} | V _{SS} | V _{SS} | V _{DD} | NC | NC | ZZ |
| J | DQ _D | DQ _D | V _{DDQ} | V _{DD} | V _{SS} | V _{SS} | V _{SS} | V _{DD} | V _{DDQ} | DQ _A | DQ _A |
| K | DQ _D | DQ _D | V _{DDQ} | V _{DD} | V _{SS} | V _{SS} | V _{SS} | V _{DD} | V _{DDQ} | DQ _A | DQ _A |
| L | DQ _D | DQ _D | V _{DDQ} | V _{DD} | V _{SS} | V _{SS} | V _{SS} | V _{DD} | V _{DDQ} | DQ _A | DQ _A |
| M | DQ _D | DQ _D | V _{DDQ} | V _{DD} | V _{SS} | V _{SS} | V _{SS} | V _{DD} | V _{DDQ} | DQ _A | DQ _A |
| N | DQP _D | NC | V _{DDQ} | V _{SS} | NC | NC | V _{SS} | V _{SS} | V _{DDQ} | NC | DQP _A |
| P | NC | NC | A | A | NC | A1 | NC | A | A | A | NC |
| R | MODE | NC | A | A | NC | A0 | NC | A | A | A | A |



Pin Definitions

| Name (BGA,FBGA) | Name (100TQFP) | I/O | Description |
|---|-------------------------|--------------------|---|
| A ₀ ,A ₁ ,A | A _[16:0] | Input-Synchronous | Address Inputs used to select one of the 128K address locations. Sampled at the rising edge of the CLK if ADSP or ADSC is active LOW, and CE ₁ , CE ₂ , and CE ₃ are sampled active. A _[1:0] feeds the 2-bit counter. |
| $\overline{BW}_A, \overline{BW}_B, \overline{BW}_C, \overline{BW}_D$ | $\overline{BW}_{[A:D]}$ | Input-Synchronous | Byte Write Select Inputs, active LOW. Qualified with \overline{BWE} to conduct byte writes to the SRAM. Sampled on the rising edge of CLK. |
| GW | \overline{GW} | Input-Synchronous | Global Write Enable Input, active LOW. When asserted LOW on the rising edge of CLK, a global write is conducted (ALL bytes are written, regardless of the values on $\overline{BW}_{[A:D]}$ and \overline{BWE}). |
| \overline{BWE} | \overline{BWE} | Input-Synchronous | Byte Write Enable Input, active LOW. Sampled on the rising edge of CLK. This signal must be asserted LOW to conduct a byte write. |
| CLK | CLK | Input-Clock | Clock Input. Used to capture all synchronous inputs to the device. Also used to increment the burst counter when ADV is asserted LOW, during a burst operation. |
| \overline{CE}_1 | \overline{CE}_1 | Input-Synchronous | Chip Enable 1 Input, active LOW. Sampled on the rising edge of CLK. Used in conjunction with CE ₂ and \overline{CE}_3 to select/deselect the device. ADSP is ignored if \overline{CE}_1 is HIGH. |
| CE ₂ | CE ₂ | Input-Synchronous | Chip Enable 2 Input, active HIGH. Sampled on the rising edge of CLK. Used in conjunction with CE ₁ and CE ₃ to select/deselect the device. |
| \overline{CE}_3 | \overline{CE}_3 | Input-Synchronous | Chip Enable 3 Input, active LOW. Sampled on the rising edge of CLK. Used in conjunction with CE ₁ and CE ₂ to select/deselect the device. |
| \overline{OE} | \overline{OE} | Input-Asynchronous | Output Enable, asynchronous input, active LOW. Controls the direction of the I/O pins. When LOW, the I/O pins behave as outputs. When deasserted HIGH, I/O pins are three-stated, and act as input data pins. OE is masked during the first clock of a read cycle when emerging from a deselected state. |
| ADV | ADV | Input-Synchronous | Advance Input signal, sampled on the rising edge of CLK. When asserted, it automatically increments the address in a burst cycle. |
| ADSP | ADSP | Input-Synchronous | Address Strobe from Processor, sampled on the rising edge of CLK. When asserted LOW, addresses presented to the device are captured in the address registers. A _[1:0] are also loaded into the burst counter. When ADSP and ADSC are both asserted, only ADSP is recognized. ADSP is ignored when CE ₁ is deasserted HIGH. |
| ADSC | ADSC | Input-Synchronous | Address Strobe from Controller, sampled on the rising edge of CLK. When asserted LOW, addresses presented to the device are captured in the address registers. A _[1:0] are also loaded into the burst counter. When ADSP and ADSC are both asserted, only ADSP is recognized. |
| ZZ | ZZ | Input-Asynchronous | ZZ "sleep" Input. This active HIGH input places the device in a non-time-critical "sleep" condition with data integrity preserved. For normal operation, this pin has to be LOW or left floating. ZZ pin has an internal pull-down. |
| DQ _A , DQ _B , DQ _C , DQ _D , DQP _A , DQP _B , DQP _C , DQP _D | DQs, DQPs | I/O-Synchronous | Bidirectional Data I/O lines. As inputs, they feed into an on-chip data register that is triggered by the rising edge of CLK. As outputs, they deliver the data contained in the memory location specified by the addresses presented during the previous clock rise of the read cycle. The direction of the pins is controlled by OE. When OE is asserted LOW, the pins behave as outputs. When HIGH, DQs and DQPs are placed in a three-state condition. |
| V _{DD} | V _{DD} | Power Supply | Power supply inputs to the core of the device. |
| V _{SS} | V _{SS} | Ground | Ground for the core of the device. |
| V _{DDQ} | V _{DDQ} | I/O Power Supply | Power supply for the I/O circuitry. |
| V _{SSQ} | V _{SSQ} | I/O Ground | Ground for the I/O circuitry. |
| MODE | MODE | Input-Static | Selects Burst Order. When tied to GND selects linear burst sequence. When tied to V _{DDQ} or left floating selects interleaved burst sequence. This is a strap pin and should remain static during device operation. Mode Pin has an internal pull-up. |
| NC | NC | | No Connects. |



Functional Overview

All synchronous inputs pass through input registers controlled by the rising edge of the clock. All data outputs pass through output registers controlled by the rising edge of the clock. Maximum access delay from the clock rise (T_{CO}) is 2.6 ns (250-MHz device).

The CY7C1347F supports secondary cache in systems utilizing either a linear or interleaved burst sequence. The linear burst sequence is suited for processors that utilize a linear burst sequence. The burst order is user selectable, and is determined by sampling the MODE input. Accesses can be initiated with either the Address Strobe from Processor (ADSP) or the Address Strobe from Controller (ADSC). Address advancement through the burst sequence is controlled by the ADV input. A two-bit on-chip wraparound burst counter captures the first address in a burst sequence and automatically increments the address for the rest of the burst access.

Byte write operations are qualified with the Byte Write Enable (BWE) and Byte Write Select ($BW_{[A:D]}$) inputs. A Global Write Enable (GW) overrides all byte write inputs and writes data to all four bytes. All writes are simplified with on-chip synchronous self-timed write circuitry.

Three synchronous Chip Selects (\overline{CE}_1 , CE_2 , \overline{CE}_3) and an asynchronous Output Enable (OE) provide for easy bank selection and output three-state control. ADSP is ignored if \overline{CE}_1 is HIGH.

Single Read Accesses

This access is initiated when the following conditions are satisfied at clock rise: (1) ADSP or ADSC is asserted LOW, (2) \overline{CE}_1 , CE_2 , \overline{CE}_3 are all asserted active, and (3) the write signals (GW, BWE) are all deasserted HIGH. ADSP is ignored if \overline{CE}_1 is HIGH. The address presented to the address inputs ($A_{[16:0]}$) is stored into the address advancement logic and the Address Register while being presented to the memory core. The corresponding data is allowed to propagate to the input of the Output Registers. At the rising edge of the next clock the data is allowed to propagate through the Output Register and onto the data bus within 2.6 ns (250-MHz device) if OE is active LOW. The only exception occurs when the SRAM is emerging from a deselected state to a selected state, its outputs are always three-stated during the first cycle of the access. After the first cycle of the access, the outputs are controlled by the OE signal. Consecutive single read cycles are supported. Once the SRAM is deselected at clock rise by the chip select and either ADSP or ADSC signals, its output will three-state immediately.

Single Write Accesses Initiated by ADSP

This access is initiated when both of the following conditions are satisfied at clock rise: (1) ADSP is asserted LOW, and (2) \overline{CE}_1 , CE_2 , \overline{CE}_3 are all asserted active. The address presented to $A_{[16:0]}$ is loaded into the Address Register and the address advancement logic while being delivered to the RAM core. The write signals (GW, BWE, and $BW_{[A:D]}$) and ADV inputs are ignored during this first cycle.

ADSP-triggered write accesses require two clock cycles to complete. If GW is asserted LOW on the second clock rise, the data presented to the DQs and DQPs inputs is written into the corresponding address location in the RAM core. If GW is HIGH, then the write operation is controlled by BWE and

$BW_{[A:D]}$ signals. The CY7C1347F provides byte write capability that is described in the Write Cycle Description table. Asserting the Byte Write Enable input (BWE) with the selected Byte Write ($BW_{[A:D]}$) input will selectively write to only the desired bytes.

Bytes not selected during a byte write operation will remain unaltered. A synchronous self-timed write mechanism has been provided to simplify the write operations.

Because the CY7C1347F is a common I/O device, the Output Enable (OE) must be deasserted HIGH before presenting data to the DQs and DQPs inputs. Doing so will three-state the output drivers. As a safety precaution, DQs and DQPs are automatically three-stated whenever a write cycle is detected, regardless of the state of OE.

Single Write Accesses Initiated by ADSC

ADSC write accesses are initiated when the following conditions are satisfied: (1) ADSC is asserted LOW, (2) ADSP is deasserted HIGH, (3) \overline{CE}_1 , CE_2 , \overline{CE}_3 are all asserted active, and (4) the appropriate combination of the write inputs (GW, BWE, and $BW_{[A:D]}$) are asserted active to conduct a write to the desired byte(s). ADSC-triggered write accesses require a single clock cycle to complete. The address presented to $A_{[16:0]}$ is loaded into the address register and the address advancement logic while being delivered to the RAM core. The ADV input is ignored during this cycle. If a global write is conducted, the data presented to the DQs and DQPs is written into the corresponding address location in the RAM core. If a byte write is conducted, only the selected bytes are written. Bytes not selected during a byte write operation will remain unaltered. A synchronous self-timed write mechanism has been provided to simplify the write operations.

Because the CY7C1347F is a common I/O device, the Output Enable (OE) must be deasserted HIGH before presenting data to the DQs and DQPs inputs. Doing so will three-state the output drivers. As a safety precaution, DQs and DQPs are automatically three-stated whenever a write cycle is detected, regardless of the state of OE.

Burst Sequences

The CY7C1347F provides a two-bit wraparound counter, fed by $A_{[1:0]}$, that implements either an interleaved or linear burst sequence. The interleaved burst sequence is designed specifically to support Intel Pentium applications. The linear burst sequence is designed to support processors that follow a linear burst sequence. The burst sequence is user-selectable through the MODE input.

Asserting ADV LOW at clock rise will automatically increment the burst counter to the next address in the burst sequence. Both read and write burst operations are supported.

Sleep Mode

The ZZ input pin is an asynchronous input. Asserting ZZ places the SRAM in a power conservation "sleep" mode. Two clock cycles are required to enter into or exit from this "sleep" mode. While in this mode, data integrity is guaranteed. Accesses pending when entering the "sleep" mode are not considered valid nor is the completion of the operation guaranteed. The device must be deselected prior to entering the "sleep" mode. \overline{CE}_1 , CE_2 , \overline{CE}_3 , ADSP, and ADSC must remain inactive for the duration of t_{ZZREC} after the ZZ input returns LOW.



Interleaved Burst Sequence

| First Address | Second Address | Third Address | Fourth Address |
|--------------------|--------------------|--------------------|--------------------|
| A _[1:0] | A _[1:0] | A _[1:0] | A _[1:0] |
| 00 | 01 | 10 | 11 |
| 01 | 00 | 11 | 10 |
| 10 | 11 | 00 | 01 |
| 11 | 10 | 01 | 00 |

Linear Burst Sequence

| First Address | Second Address | Third Address | Fourth Address |
|--------------------|--------------------|--------------------|--------------------|
| A _[1:0] | A _[1:0] | A _[1:0] | A _[1:0] |
| 00 | 01 | 10 | 11 |
| 01 | 10 | 11 | 00 |
| 10 | 11 | 00 | 01 |
| 11 | 00 | 01 | 10 |

ZZ Mode Electrical Characteristics

| Parameter | Description | Test Conditions | Min. | Max. | Unit |
|--------------------|------------------------------------|-----------------------------|-------------------|-------------------|------|
| I _{DDZZ} | Snooze mode standby current | ZZ ≥ V _{DD} - 0.2V | | 40 | mA |
| t _{ZZS} | Device operation to ZZ | ZZ ≥ V _{DD} - 0.2V | | 2t _{CYC} | ns |
| t _{ZZREC} | ZZ recovery time | ZZ ≤ 0.2V | 2t _{CYC} | | ns |
| t _{ZZI} | ZZ Active to snooze current | This parameter is sampled | | 2t _{CYC} | ns |
| t _{RZZI} | ZZ Inactive to exit snooze current | This parameter is sampled | 0 | | ns |

Truth Table^[2, 3, 4, 5, 6]

| Next Cycle | Add. Used | \overline{CE}_1 | CE ₂ | \overline{CE}_3 | ZZ | \overline{ADSP} | \overline{ADSC} | \overline{ADV} | \overline{WRITE} | \overline{OE} | CLK | DQ |
|-----------------------------|-----------|-------------------|-----------------|-------------------|----|-------------------|-------------------|------------------|--------------------|-----------------|-----|-------------|
| Deselect Cycle, Power-down | None | H | X | X | L | X | L | X | X | X | L-H | three-state |
| Deselect Cycle, Power-down | None | L | L | X | L | L | X | X | X | X | L-H | three-state |
| Deselect Cycle, Power-down | None | L | X | H | L | L | X | X | X | X | L-H | three-state |
| Deselect Cycle, Power-down | None | L | L | X | L | H | L | X | X | X | L-H | three-state |
| Deselect Cycle, Power-down | None | L | X | H | L | H | L | X | X | X | L-H | three-state |
| Snooze Mode, Power-down | None | X | X | X | H | X | X | X | X | X | X | three-state |
| READ Cycle, Begin Burst | External | L | H | L | L | L | X | X | X | L | L-H | Q |
| READ Cycle, Begin Burst | External | L | H | L | L | L | X | X | X | H | L-H | three-state |
| WRITE Cycle, Begin Burst | External | L | H | L | L | H | L | X | L | X | L-H | D |
| READ Cycle, Begin Burst | External | L | H | L | L | H | L | X | H | L | L-H | Q |
| READ Cycle, Begin Burst | External | L | H | L | L | H | L | X | H | H | L-H | three-state |
| READ Cycle, Continue Burst | Next | X | X | X | L | H | H | L | H | L | L-H | Q |
| READ Cycle, Continue Burst | Next | X | X | X | L | H | H | L | H | H | L-H | three-state |
| READ Cycle, Continue Burst | Next | H | X | X | L | X | H | L | H | L | L-H | Q |
| READ Cycle, Continue Burst | Next | H | X | X | L | X | H | L | H | H | L-H | three-state |
| WRITE Cycle, Continue Burst | Next | X | X | X | L | H | H | L | L | X | L-H | D |
| WRITE Cycle, Continue Burst | Next | H | X | X | L | X | H | L | L | X | L-H | D |
| READ Cycle, Suspend Burst | Current | X | X | X | L | H | H | H | H | L | L-H | Q |
| READ Cycle, Suspend Burst | Current | X | X | X | L | H | H | H | H | H | L-H | three-state |
| READ Cycle, Suspend Burst | Current | H | X | X | L | X | H | H | H | L | L-H | Q |
| READ Cycle, Suspend Burst | Current | H | X | X | L | X | H | H | H | H | L-H | three-state |

Notes:

- X = "Don't Care." H = Logic HIGH, L = Logic LOW.
- $\overline{WRITE} = L$ when any one or more Byte Write enable signals (\overline{BW}_A , \overline{BW}_B , \overline{BW}_C , \overline{BW}_D) and $\overline{BWE} = L$ or $\overline{GW} = L$. $\overline{WRITE} = H$ when all Byte write enable signals (\overline{BW}_A , \overline{BW}_B , \overline{BW}_C , \overline{BW}_D), \overline{BWE} , $\overline{GW} = H$.
- The DQ pins are controlled by the current cycle and the \overline{OE} signal. \overline{OE} is asynchronous and is not sampled with the clock.
- The SRAM always initiates a read cycle when \overline{ADSP} asserted, regardless of the state of \overline{GW} , \overline{BWE} , or $\overline{BW}_{[A,D]}$. Writes may occur only on subsequent clocks after the \overline{ADSP} or with the assertion of \overline{ADSC} . As a result, \overline{OE} must be driven HIGH prior to the start of the write cycle to allow the outputs to three-state. \overline{OE} is a don't care for the remainder of the write cycle.
- \overline{OE} is asynchronous and is not sampled with the clock rise. It is masked internally during write cycles. During a read cycle all data bits are three-state when \overline{OE} is inactive or when the device is deselected, and all data bits behave as output when \overline{OE} is active (LOW).


Truth Table^[2, 3, 4, 5, 6]

| Next Cycle | Add. Used | \overline{CE}_1 | CE_2 | \overline{CE}_3 | ZZ | \overline{ADSP} | \overline{ADSC} | \overline{ADV} | \overline{WRITE} | \overline{OE} | CLK | DQ |
|----------------------------|-----------|-------------------|--------|-------------------|----|-------------------|-------------------|------------------|--------------------|-----------------|-----|----|
| WRITE Cycle, Suspend Burst | Current | X | X | X | L | H | H | H | L | X | L-H | D |
| WRITE Cycle, Suspend Burst | Current | H | X | X | L | X | H | H | L | X | L-H | D |

Partial Truth Table for Read/write^[2, 7]

| Function | \overline{GW} | \overline{BWE} | \overline{BW}_D | \overline{BW}_C | \overline{BW}_B | \overline{BW}_A |
|--------------------------------|-----------------|------------------|-------------------|-------------------|-------------------|-------------------|
| Read | H | H | X | X | X | X |
| Read | H | L | H | H | H | H |
| Write Byte A – DQ _A | H | L | H | H | H | L |
| Write Byte B – DQ _B | H | L | H | H | L | H |
| Write Bytes B, A | H | L | H | H | L | L |
| Write Byte C – DQ _C | H | L | H | L | H | H |
| Write Bytes C, A | H | L | H | L | H | L |
| Write Bytes C, B | H | L | H | L | L | H |
| Write Bytes C, B, A | H | L | H | L | L | L |
| Write Byte D – DQ _D | H | L | L | H | H | H |
| Write Bytes D, A | H | L | L | H | H | L |
| Write Bytes D, B | H | L | L | H | L | H |
| Write Bytes D, B, A | H | L | L | H | L | L |
| Write Bytes D, C | H | L | L | L | H | H |
| Write Bytes D, C, A | H | L | L | L | H | L |
| Write Bytes D, C, B | H | L | L | L | L | H |
| Write All Bytes | H | L | L | L | L | L |
| Write All Bytes | L | X | X | X | X | X |

Notes:

7. Table only lists a partial listing of the byte write combinations. Any combination of $BW_{[A,D]}$ is valid. Appropriate write will be done based on which byte write is active.



Maximum Ratings

(Above which the useful life may be impaired. For user guidelines, not tested.)

Storage Temperature -65°C to +150°C

Ambient Temperature with Power Applied..... -55°C to +125°C

Supply Voltage on V_{DD} Relative to GND..... -0.5V to +4.6V

DC Voltage Applied to Outputs in High-Z State -0.5V to $V_{DD} + 0.5V$

DC Input Voltage -0.5V to $V_{DD} + 0.5V$

Current into Outputs (LOW)..... 20 mA

Static Discharge Voltage..... > 2001V (per MIL-STD-883, Method 3015)

Latch-up Current..... > 200 mA

Operating Range

| Range | Ambient Temperature | V_{DD} | V_{DDQ} |
|-------|---------------------|---------------|----------------------|
| Com'l | 0°C to +70°C | 3.3V -5%/+10% | 2.5V -5% to V_{DD} |
| Ind'l | -40°C to +85°C | | |

Electrical Characteristics Over the Operating Range [8, 9]

| Parameter | Description | Test Conditions | Min. | Max. | Unit |
|-------------------|---|---|-----------------------|-----------------|---------------|
| V_{DD} | Power Supply Voltage | | 3.135 | 3.6 | V |
| V_{DDQ} | I/O Supply Voltage | | 2.375 | V_{DD} | V |
| V_{OH} | Output HIGH Voltage | $V_{DDQ} = 3.3V, V_{DD} = \text{Min.}, I_{OH} = -4.0 \text{ mA}$ | 2.4 | | V |
| | | $V_{DDQ} = 2.5V, V_{DD} = \text{Min.}, I_{OH} = -2.0 \text{ mA}$ | 2.0 | | V |
| V_{OL} | Output LOW Voltage | $V_{DDQ} = 3.3V, V_{DD} = \text{Min.}, I_{OL} = 8.0 \text{ mA}$ | | 0.4 | V |
| | | $V_{DDQ} = 2.5V, V_{DD} = \text{Min.}, I_{OL} = 2.0 \text{ mA}$ | | 0.7 | V |
| V_{IH} | Input HIGH Voltage ^[8] | $V_{DDQ} = 3.3V$ | 2.0 | $V_{DD} + 0.3V$ | V |
| | | $V_{DDQ} = 2.5V$ | 1.7 | $V_{DD} + 0.3V$ | V |
| V_{IL} | Input LOW Voltage ^[8] | $V_{DDQ} = 3.3V$ | -0.3 | 0.8 | V |
| | | $V_{DDQ} = 2.5V$ | -0.3 | 0.7 | V |
| I_X | Input Load Current except ZZ and MODE | $GND \leq V_I \leq V_{DDQ}$ | -5 | 5 | μA |
| | Input Current of MODE | Input = V_{SS} | -30 | | μA |
| | | Input = V_{DDQ} | | 5 | μA |
| | Input Current of ZZ | Input = V_{SS} | -5 | | μA |
| Input = V_{DDQ} | | | 30 | μA | |
| I_{OZ} | Output Leakage Current | $GND \leq V_I \leq V_{DDQ}$, Output Disabled | -5 | 5 | μA |
| I_{DD} | V_{DD} Operating Supply Current | $V_{DD} = \text{Max.}, I_{OUT} = 0 \text{ mA}, f = f_{MAX} = 1/t_{CYC}$ | 4-ns cycle, 250 MHz | 325 | mA |
| | | | 4.4-ns cycle, 225 MHz | 290 | mA |
| | | | 5-ns cycle, 200 MHz | 265 | mA |
| | | | 6-ns cycle, 166 MHz | 240 | mA |
| | | | 7.5-ns cycle, 133 MHz | 225 | mA |
| I_{SB1} | Automatic CE Power-down Current—TTL Inputs | Max. V_{DD} , Device Deselected, $V_{IN} \geq V_{IH}$ or $V_{IN} \leq V_{IL}$, $f = f_{MAX} = 1/t_{CYC}$ | 4-ns cycle, 250 MHz | 120 | mA |
| | | | 4.4-ns cycle, 225 MHz | 115 | mA |
| | | | 5-ns cycle, 200 MHz | 110 | mA |
| | | | 6-ns cycle, 166 MHz | 100 | mA |
| | | | 7.5-ns cycle, 133 MHz | 90 | mA |
| I_{SB2} | Automatic CE Power-down Current—CMOS Inputs | Max. V_{DD} , Device Deselected, $V_{IN} \leq 0.3V$ or $V_{IN} \geq V_{DDQ} - 0.3V$, $f = 0$ | All speeds | 40 | mA |

Notes:

8. Overshoot: $V_{IH}(AC) < V_{DD} + 1.5V$ (Pulse width less than $t_{CYC}/2$), undershoot: $V_{IL}(AC) > -2V$ (Pulse width less than $t_{CYC}/2$).

9. $T_{Power-up}$: Assumes a linear ramp from 0v to $V_{DD}(\text{min.})$ within 200ms. During this time $V_{IH} \leq V_{DD}$ and $V_{DDQ} \leq V_{DD}$

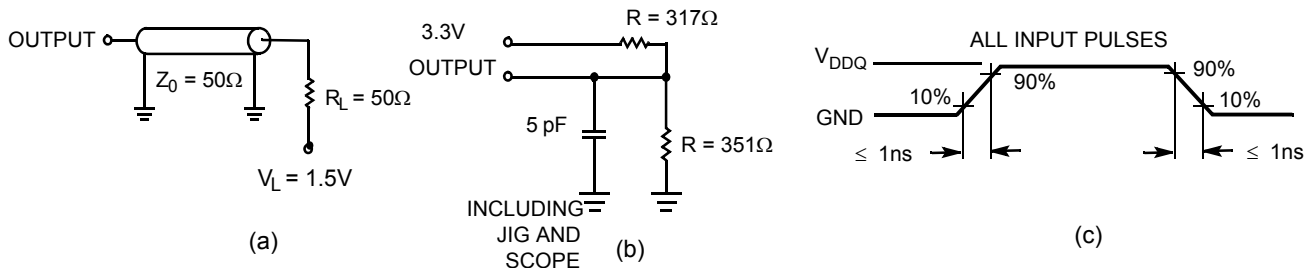
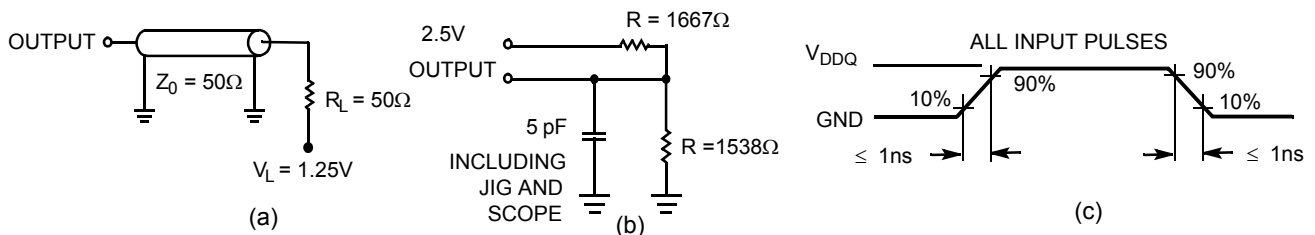

Electrical Characteristics Over the Operating Range (continued)^[8, 9]

| Parameter | Description | Test Conditions | Min. | Max. | Unit | |
|------------------|---|---|-----------------------|------|------|----|
| I _{SB3} | Automatic CE Power-down Current—CMOS Inputs | Max. V _{DD} , Device Deselected, or V _{IN} ≤ 0.3V or V _{IN} ≥ V _{DDQ} - 0.3V f = f _{MAX} = 1/t _{CYC} | 4-ns cycle, 250 MHz | | 105 | mA |
| | | | 4.4-ns cycle, 225 MHz | | 100 | mA |
| | | | 5-ns cycle, 200 MHz | | 95 | mA |
| | | | 6-ns cycle, 166 MHz | | 85 | mA |
| | | | 7.5-ns cycle, 133 MHz | | 75 | mA |
| I _{SB4} | Automatic CE Power-down Current—TTL Inputs | Max. V _{DD} , Device Deselected, V _{IN} ≥ V _{IH} or V _{IN} ≤ V _{IL} , f = 0 | | 45 | mA | |

Shaded areas contain advance information.

Capacitance^[10]

| Parameter | Description | Test Conditions | TQFP Package | BGA Package | fBGA Package | Unit |
|------------------|--------------------------|---|--------------|-------------|--------------|------|
| C _{IN} | Input Capacitance | T _A = 25°C, f = 1 MHz, V _{DD} = 3.3V, V _{DDQ} = 3.3V | 5 | 5 | 5 | pF |
| C _{CLK} | Clock Input Capacitance | | 5 | 5 | 5 | pF |
| C _{I/O} | Input/Output Capacitance | | 5 | 7 | 7 | pF |

AC Test Loads and Waveforms
3.3V I/O Test Load

2.5V I/O Test Load

Thermal Resistance^[10]

| Parameter | Description | Test Conditions | TQFP Package | BGA Package | fBGA Package | Unit |
|-----------------|--|--|--------------|-------------|--------------|------|
| Q _{JA} | Thermal Resistance (Junction to Ambient) | Test conditions follow standard test methods and procedures for measuring thermal impedance, per EIA / JESD51. | 41.83 | 47.63 | 20.3 | °C/W |
| Q _{JC} | Thermal Resistance (Junction to Case) | | 9.99 | 11.71 | 4.6 | °C/W |

Note:

10. Tested initially and after any design or process changes that may affect these parameters.


Switching Characteristics Over the Operating Range^[15, 16]

| Parameter | Description | -250 | | -225 | | -200 | | -166 | | -133 | | Unit |
|--------------------|--|------|------|------|------|------|------|------|------|------|------|------|
| | | Min. | Max. | Min. | Max. | Min. | Max. | Min. | Max. | Min. | Max. | |
| t _{POWER} | V _{DD} (min.) to the first access read or write ^[11] | 1 | | 1 | | 1 | | 1 | | 1 | | ms |
| t _{CYC} | Clock Cycle Time | 4.0 | | 4.4 | | 5.0 | | 6.0 | | 7.5 | | ns |
| t _{CH} | Clock HIGH | 1.7 | | 2.0 | | 2.0 | | 2.5 | | 3.0 | | ns |
| t _{CL} | Clock LOW | 1.7 | | 2.0 | | 2.0 | | 2.5 | | 3.0 | | ns |
| t _{AS} | Address Set-up Before CLK Rise | 0.8 | | 1.2 | | 1.2 | | 1.5 | | 1.5 | | ns |
| t _{AH} | Address Hold After CLK Rise | 0.4 | | 0.5 | | 0.5 | | 0.5 | | 0.5 | | ns |
| t _{CO} | Data Output Valid After CLK Rise | | 2.6 | | 2.6 | | 2.8 | | 3.5 | | 4.0 | ns |
| t _{DOH} | Data Output Hold After CLK Rise | 1.0 | | 1.0 | | 1.0 | | 2.0 | | 2.0 | | ns |
| t _{WES} | GW, BWS _[3:0] Set-up Before CLK Rise | 0.8 | | 1.2 | | 1.2 | | 1.5 | | 1.5 | | ns |
| t _{WEH} | GW, BWS _[3:0] Hold After CLK Rise | 0.4 | | 0.5 | | 0.5 | | 0.5 | | 0.5 | | ns |
| t _{ALS} | ADV/LD Set-up Before CLK Rise | 0.8 | | 1.2 | | 1.2 | | 1.5 | | 1.5 | | ns |
| t _{ALH} | ADV/LD Hold after CLK Rise | 0.4 | | 0.5 | | 0.5 | | 0.5 | | 0.5 | | ns |
| t _{DS} | Data Input Set-up Before CLK Rise | 0.8 | | 1.2 | | 1.2 | | 1.5 | | 1.5 | | ns |
| t _{DH} | Data Input Hold After CLK Rise | 0.4 | | 0.5 | | 0.5 | | 0.5 | | 0.5 | | ns |
| t _{CES} | Chip Enable Set-up Before CLK Rise | 0.8 | | 1.2 | | 1.2 | | 1.5 | | 1.5 | | ns |
| t _{CEH} | Chip Enable Hold After CLK Rise | 0.4 | | 0.5 | | 0.5 | | 0.5 | | 0.5 | | ns |
| t _{CHZ} | Clock to High-Z ^[12, 13, 14] | | 2.6 | | 2.6 | | 2.8 | | 3.5 | | 4.0 | ns |
| t _{CLZ} | Clock to Low-Z ^[12, 13, 14] | 0 | | 0 | | 0 | | 0 | | 0 | | ns |
| t _{EOHZ} | OE HIGH to Output High-Z ^[12, 13, 14] | | 2.6 | | 2.6 | | 2.8 | | 3.5 | | 4.0 | ns |
| t _{EOLZ} | OE LOW to Output Low-Z ^[12, 13, 14] | 0 | | 0 | | 0 | | 0 | | 0 | | ns |
| t _{EOV} | OE LOW to Output Valid | | 2.6 | | 2.6 | | 2.8 | | 3.5 | | 4.5 | ns |

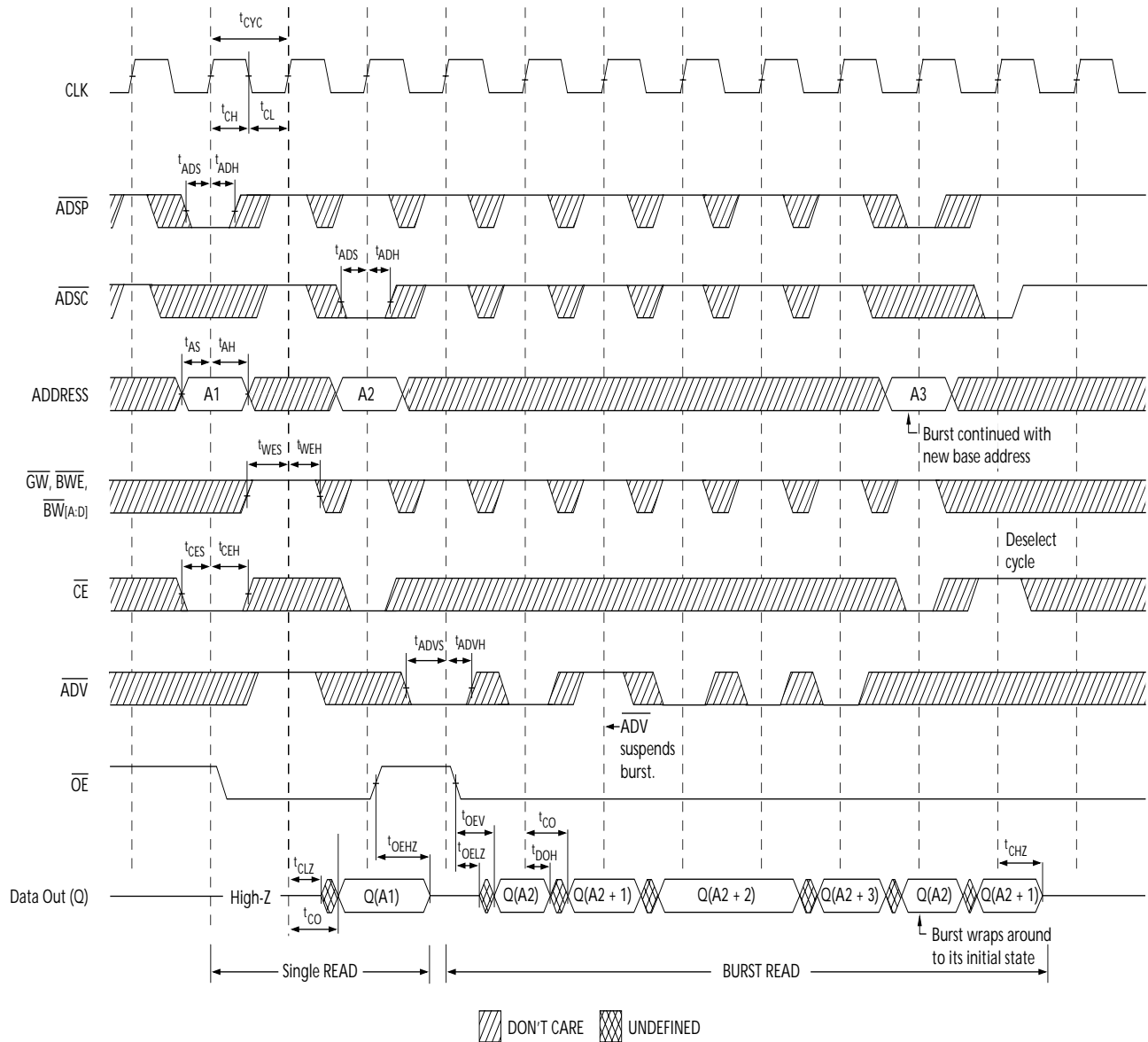
Notes:

11. This part has a voltage regulator internally; t_{POWER} is the time that the power needs to be supplied above V_{DD}(minimum) initially before a read or write operation can be initiated.
12. t_{CHZ}, t_{CLZ}, t_{EOLZ}, and t_{EOHZ} are specified with AC test conditions shown in part (b) of AC Test Loads. Transition is measured ± 200 mV from steady-state voltage.
13. At any given voltage and temperature, t_{EOHZ} is less than t_{EOLZ} and t_{CHZ} is less than t_{CLZ} to eliminate bus contention between SRAMs when sharing the same data bus. These specifications do not imply a bus contention condition, but reflect parameters guaranteed over worst case user conditions. Device is designed to achieve High-Z prior to Low-Z under the same system conditions.
14. This parameter is sampled and not 100% tested.
15. Timing references level is 1.5V when V_{DDQ} = 3.3V and is 1.25V when V_{DDQ} = 2.5V on all data sheets.
16. Test conditions shown in (a) of AC Test Loads unless otherwise noted.



Switching Waveforms

Read Cycle Timing^[17]



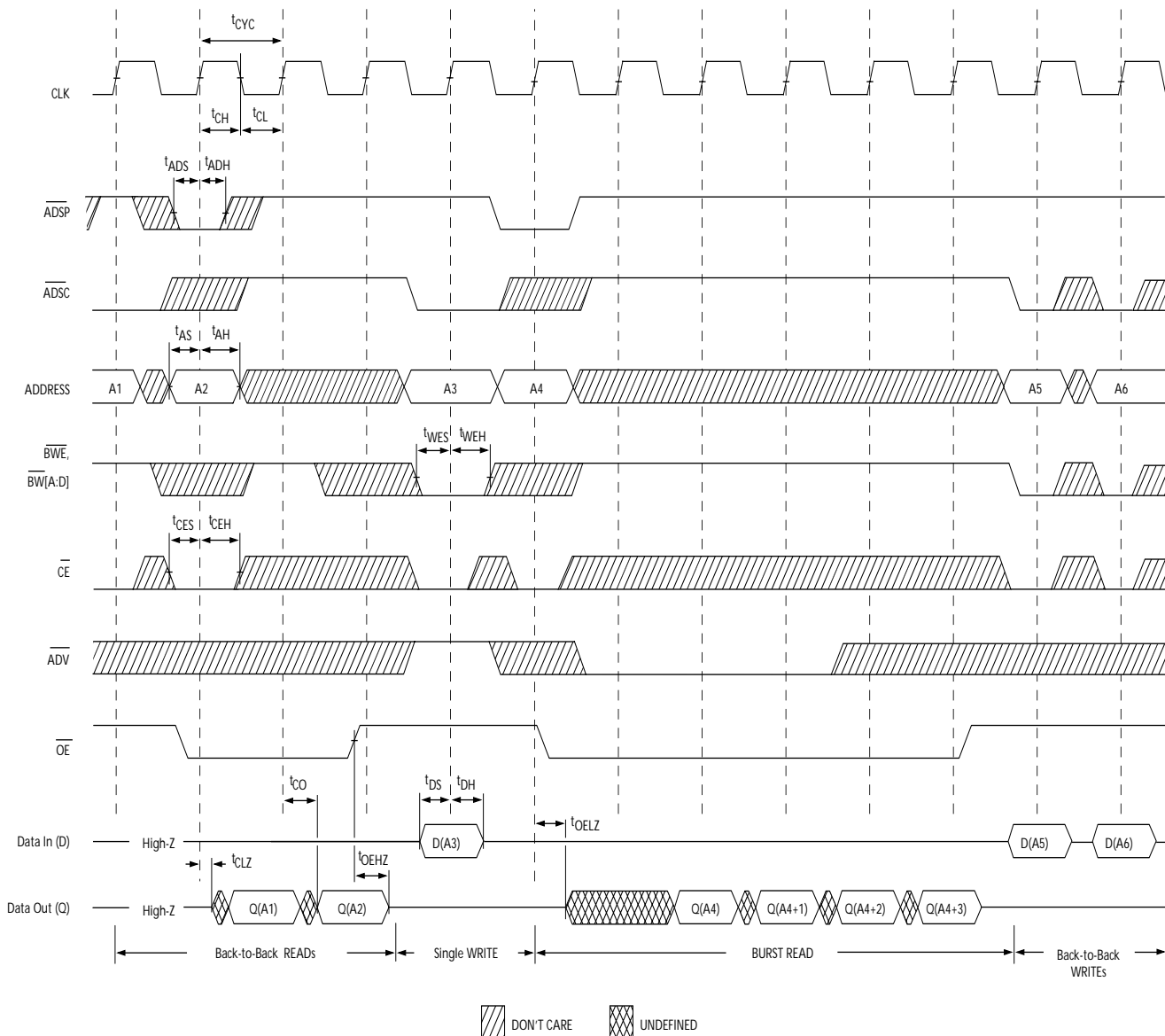
Notes:

- 17. On this diagram when \overline{CE} is LOW, \overline{CE}_1 is LOW, CE_2 is HIGH and \overline{CE}_3 is LOW. When \overline{CE} is HIGH, \overline{CE}_1 is HIGH or CE_2 is LOW or \overline{CE}_3 is HIGH.
- 18. Full width write can be initiated by either \overline{GW} LOW, or by \overline{GW} HIGH, \overline{BWE} LOW and $BW_{[A:D]}$ LOW.



Switching Waveforms (continued)

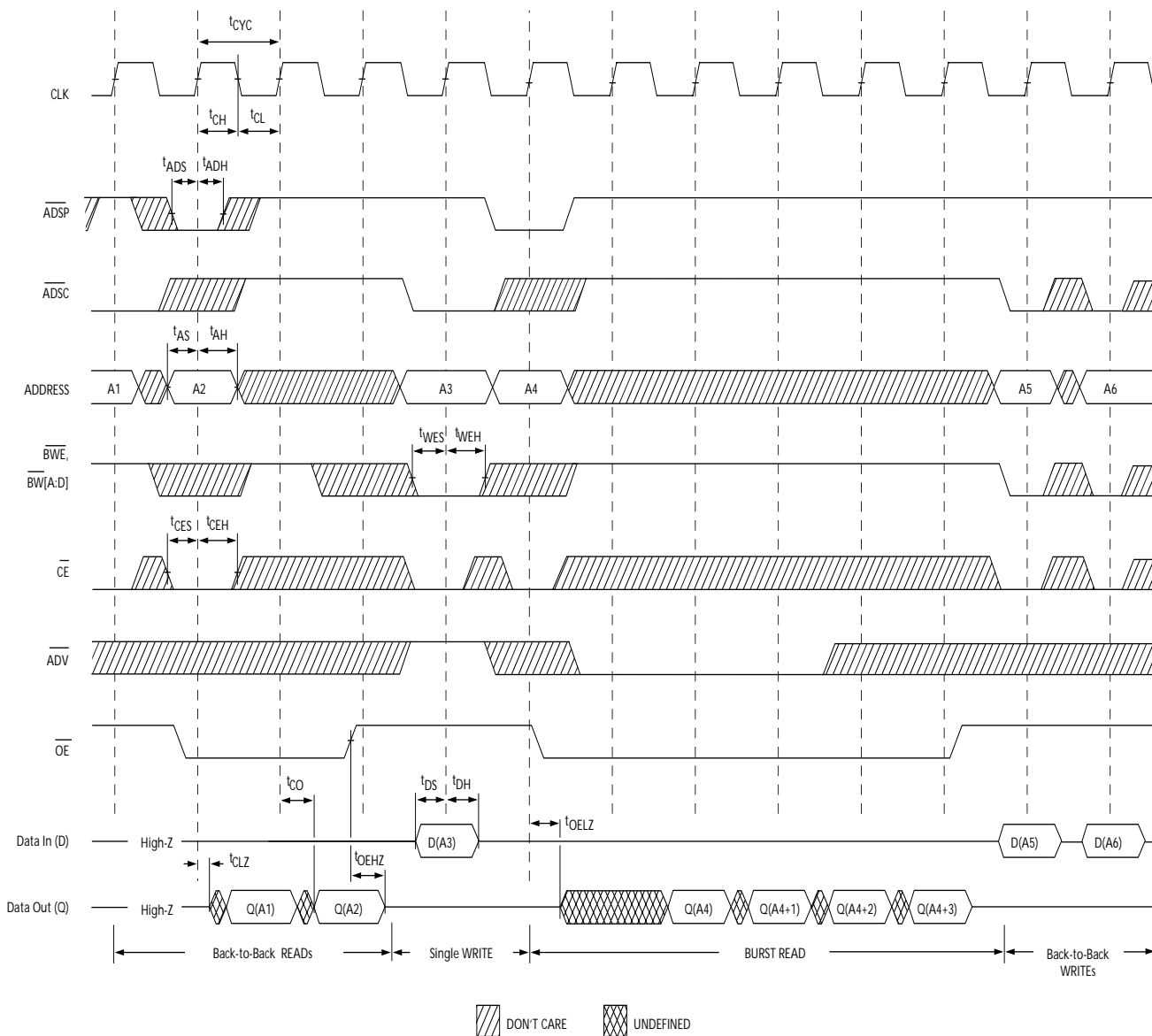
Write Cycle Timing^[17, 18]





Switching Waveforms (continued)

Read/Write Cycle Timing [17, 19, 20]

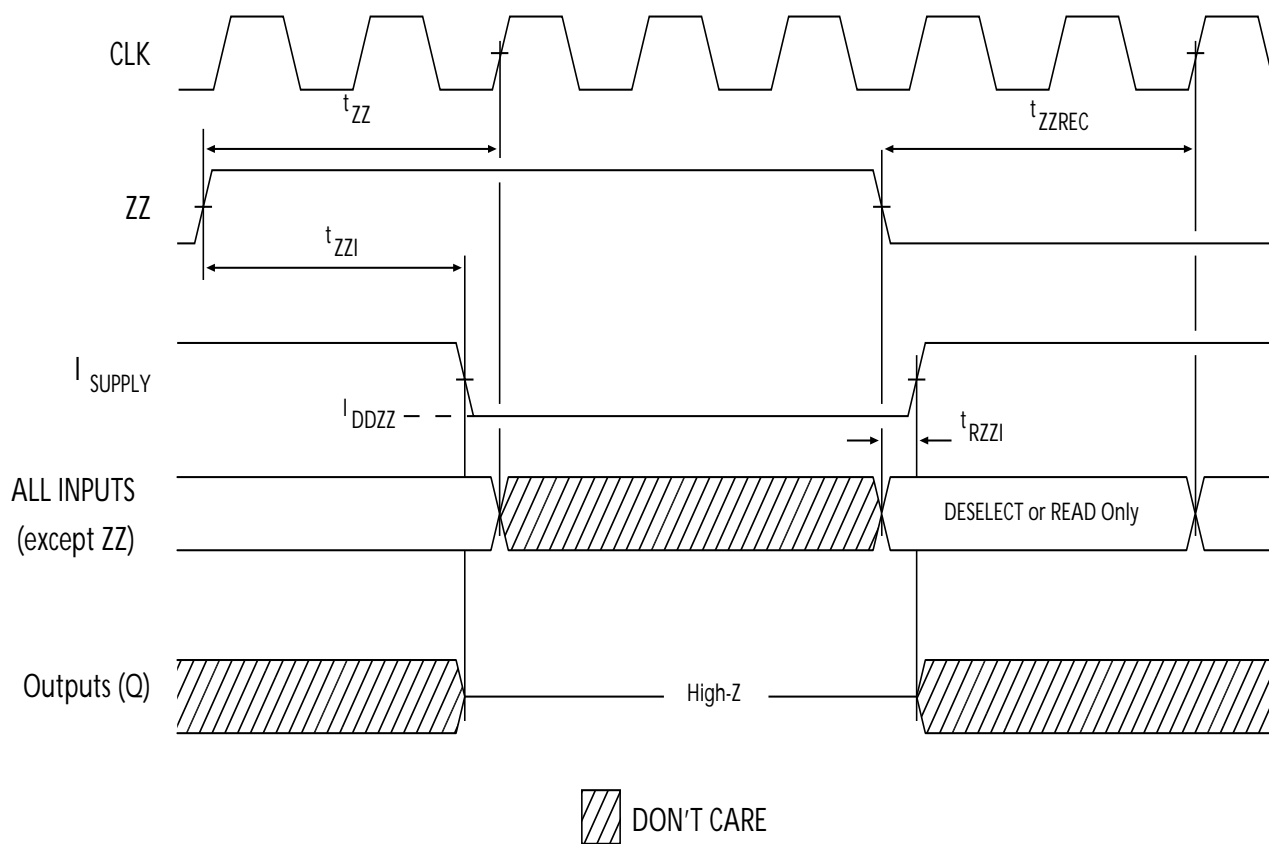


Note:
 19. The data bus (Q) remains in high-Z following a WRITE cycle, unless a new read access is initiated by \overline{ADSP} or \overline{ADSC} .
 20. GW is HIGH



Switching Waveforms (continued)

ZZ Mode Timing [21, 22]



Notes:

- 21. Device must be deselected when entering ZZ mode. See Cycle Descriptions table for all possible signal conditions to deselect the device.
- 22. DQs are in high-Z when exiting ZZ sleep mode.



Ordering Information

| Speed (MHz) | Ordering Code | Package Name | Package Type | Operating Range |
|-------------|------------------|--------------|------------------------------|-----------------|
| 250 | CY7C1347F-250AC | A101 | 100-Lead Thin Quad Flat Pack | Commercial |
| | CY7C1347F-250BGC | BG119 | 119-Ball BGA | |
| 225 | CY7C1347F-225AC | A101 | 100-Lead Thin Quad Flat Pack | Commercial |
| | CY7C1347F-225BGC | BG119 | 119-Ball BGA | |
| 200 | CY7C1347F-200AC | A101 | 100-Lead Thin Quad Flat Pack | Commercial |
| | CY7C1347F-200BGC | BG119 | 119-Ball BGA | |
| | CY7C1347F-200BZC | BB165C | 165-Ball FBGA | |
| | CY7C1347F-200AI | A101 | 100-Lead Thin Quad Flat Pack | Industrial |
| | CY7C1347F-200BGI | BG119 | 119-Ball BGA | |
| 166 | CY7C1347F-166AC | A101 | 100-Lead Thin Quad Flat Pack | Commercial |
| | CY7C1347F-166BGC | BG119 | 119-Ball BGA | |
| | CY7C1347F-166BZC | BB165C | 165-Ball FBGA | |
| | CY7C1347F-166AI | A101 | 100-Lead Thin Quad Flat Pack | Industrial |
| | CY7C1347F-166BGI | BG119 | 119-Ball BGA | |
| 133 | CY7C1347F-133AC | A101 | 100-Lead Thin Quad Flat Pack | Commercial |
| | CY7C1347F-133BGC | BG119 | 119-Ball BGA | |
| | CY7C1347F-133BZC | BB165C | 165-Ball FBGA | |
| | CY7C1347F-133AI | A101 | 100-Lead Thin Quad Flat Pack | Industrial |
| | CY7C1347F-133BGI | BG119 | 119-Ball BGA | |

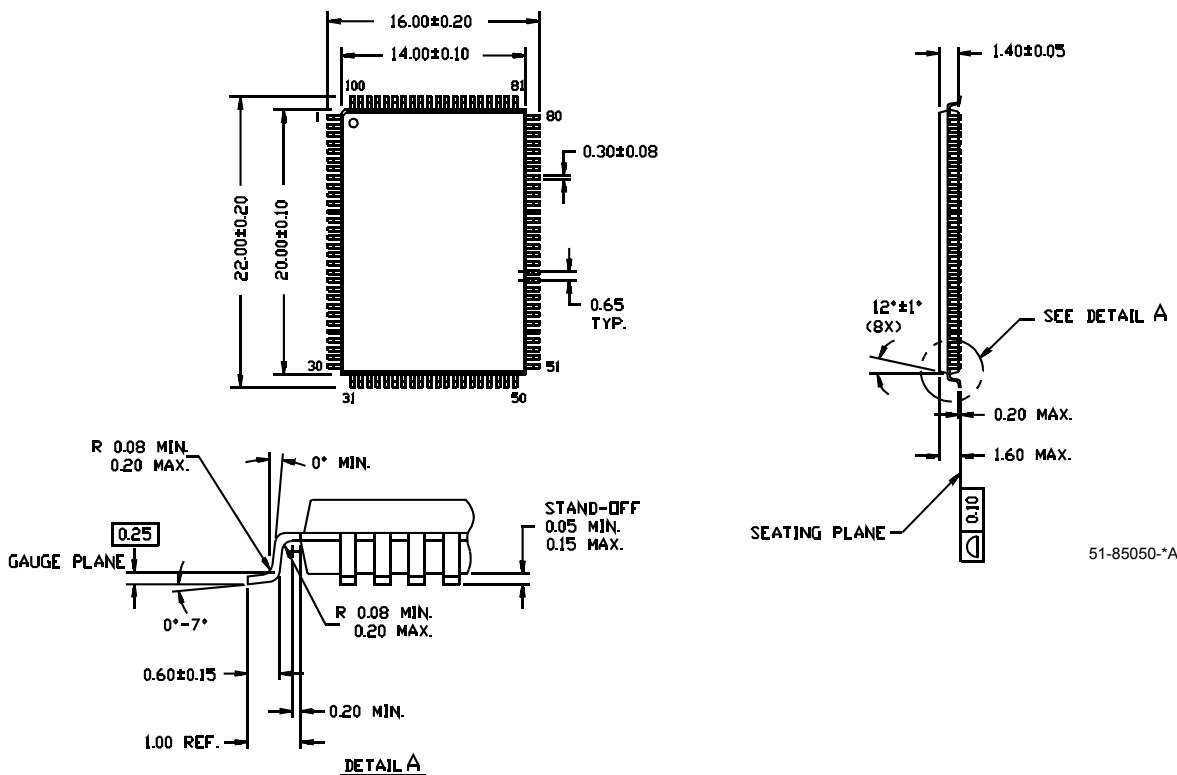
Shaded areas contain advance information.

Please contact your local Cypress sales representative for availability of these parts.



Package Diagrams

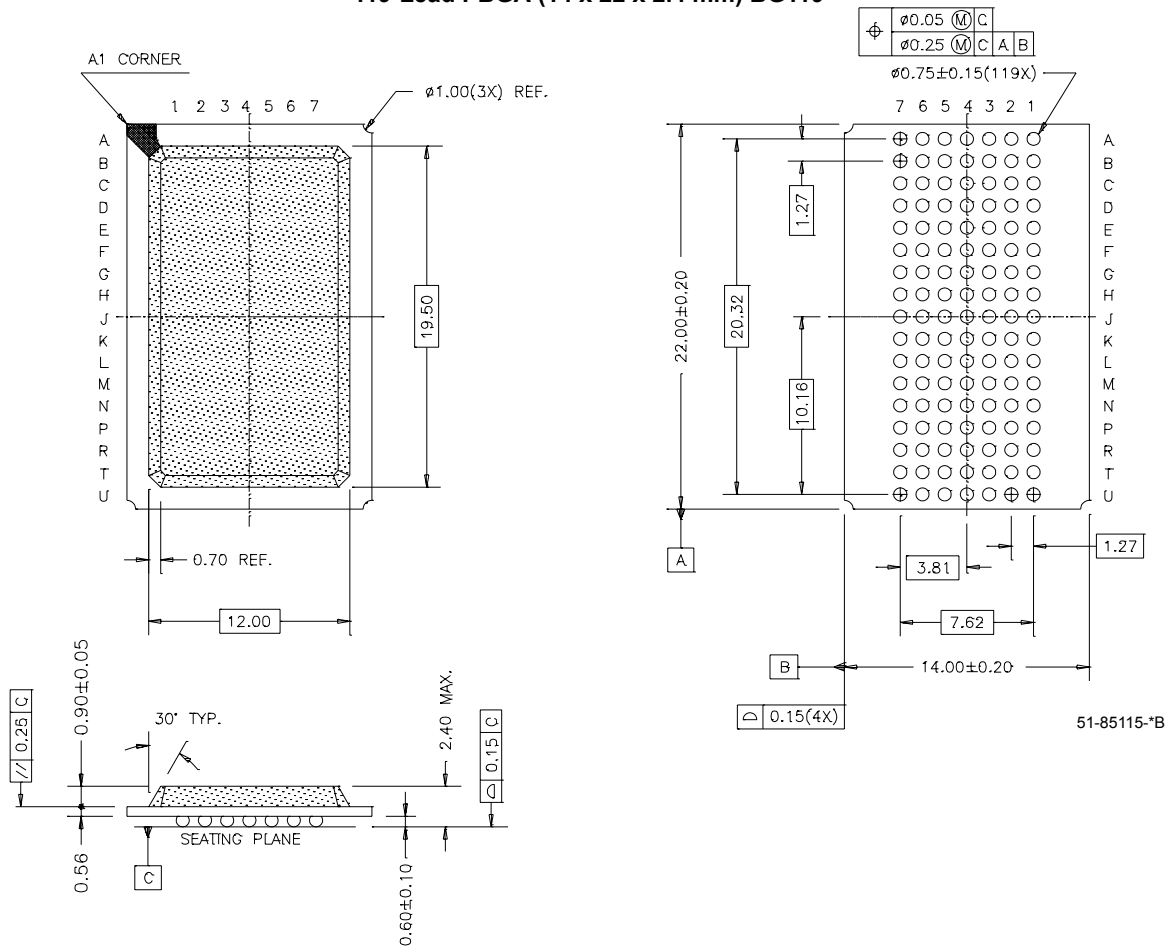
100-Pin Thin Plastic Quad Flatpack (14 x 20 x 1.4 mm) A101
DIMENSIONS ARE IN MILLIMETERS.





Package Diagrams (continued)

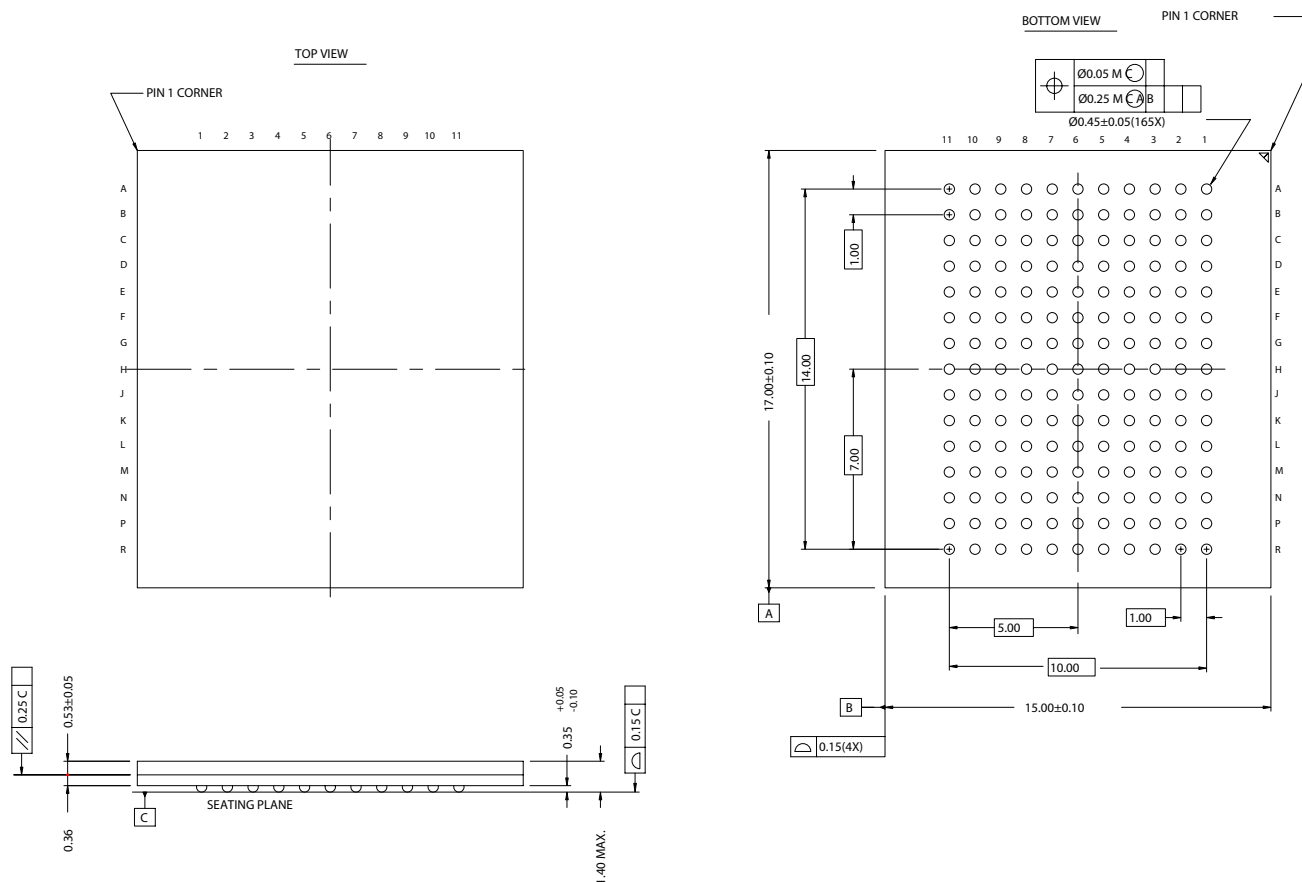
119-Lead PBGA (14 x 22 x 2.4 mm) BG119





Package Diagrams (continued)

165-Ball FBGA (15 x 17 x 1.20 mm) BB165C



51-85165-*A

Intel and Pentium are registered trademarks of Intel Corporation. PowerPC is a registered trademark of International Business Machines, Inc. All product and company names mentioned in this document may be the trademarks of their respective holders.



Document History Page

| Document Title: CY7C1347F 4-Mbit (128K x 36) Pipelined Sync SRAM Document Number: 38-05213 | | | | |
|---|---------|------------|-----------------|---|
| REV. | ECN NO. | Issue Date | Orig. of Change | Description of Change |
| ** | 119829 | 12/16/02 | HGK | New Data Sheet |
| *A | 123117 | 01/18/03 | RBI | Added power-up requirements to AC test loads and waveforms information |
| *B | 127632 | 06/13/03 | DPM | Final Data Sheet |
| *C | 200660 | See ECN | SWI | Improvements: Updated thermal resistance and capacitance Updated R5 pin of 119-Ball BGA from V _{DD} to NC Updated all switching waveforms Clarifications: Updated footnotes Updated ZZ mode electrical characteristics |
| *D | 213342 | See ECN | VBL | Update Ordering Info section: Delete -100, shade -250, -225 Delete -100, Shade -250, -225 data from selection guide and characteristics |