



### CYNB55

55Amp - 400/600/800/1000V - SCR

#### Applications

- Motor Control
- Overvoltage Crowbar Protection
- Capacitive Discharge Ignition
- Voltage Regulation
- Welding Equipment
- Capacitive Filter Soft Start (Inrush Current Control)

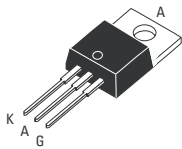
> Suitable for General Purpose AC Switching

> IGT 35mA Max.

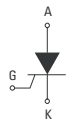
> VDRM/VRMM 400, 600, 800, 1000V

#### Absolute Maximum Ratings

	CONDITIONS	SYMBOL	RATING
RMS On-State Current (full sine wave) <sup>NOTE 1</sup>	$T_c = 70^\circ\text{C}$	TO-220AB	$I_{T(RMS)}$ 55A
Average On-State Current	$T_c = 70^\circ\text{C}$	TO-220AB	$I_{T(AV)}$ 35A
Non Repetitive Surge Peak On-State Current (Full Cycle, $T_j$ Initial = $25^\circ\text{C}$ )	F = 50 Hz F = 60 Hz	$I_{TSM}$	675A 700A
$I^2t$ Value for fusing	$t_p = 10$ ms	$I^2t$	2030A <sup>2</sup> s
Critical rate of rise of on-state current $I_G = 2 \times I_{GT}$ , $t_r < 100$ ns, $T_j = 125^\circ\text{C}$		di/dt	100A/ $\mu$ s
Peak Gate Current @ $T_j = 125^\circ\text{C}$	$t_p = 20$ $\mu$ s	$I_{GM}$	4A
Average Gate Power Dissipation @ $T_j = 125^\circ\text{C}$		PG(AV)	1W
Storage Temperature Range		$T_{stg}$	-40 to +150 $^\circ\text{C}$
Operating Junction Temperature Range		$T_j$	-40 to +125 $^\circ\text{C}$
Maximum Peak Reverse Gate Voltage		$V_{RGM}$	5V



TO-220AB Non-Isolated (CYNB55)



#### Electrical Characteristics <sup>NOTE 2</sup>

$I_{GT}$ MAX @ $V_D = 12$ V, $R_L = 30\Omega$		35mA
$V_{GT}$ MAX @ $V_D = 12$ V, $R_L = 30\Omega$		1.3V
$V_{GD}$ MIN @ $V_D = V_{DRM}$ , $R_L = 3.3k\Omega$	$T_j = 125^\circ\text{C}$	0.2V
$I_H$ MAX @ $I_T = 500$ mA (gate open)		50mA
$I_L$ MAX @ $I_G = 1.2 I_{GT}$		90mA
dv/dt MIN @ $V_D = 67\%V_{DRM}$ (gate open)	$T_j = 125^\circ\text{C}$	1000V/ $\mu$ s
$V_{TM}$ MAX @ $I_{TM} = 78$ A, $t_p = 380\mu$ s	$T_j = 25^\circ\text{C}$	1.6V
$I_{DRM}$ MAX @ $V_{DRM} = V_{RRM}$	$T_j = 25^\circ\text{C}$	5 $\mu$ A
$I_{RRM}$ MAX @ $V_{DRM} = V_{RRM}$	$T_j = 125^\circ\text{C}$	4mA

#### GENERAL NOTES

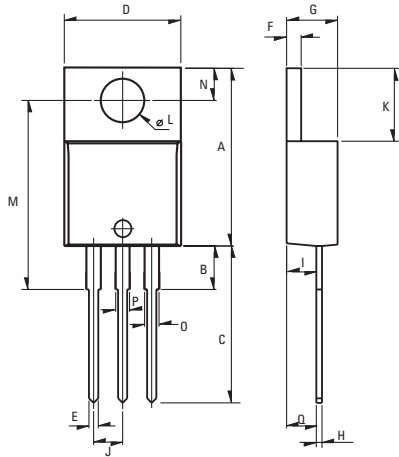
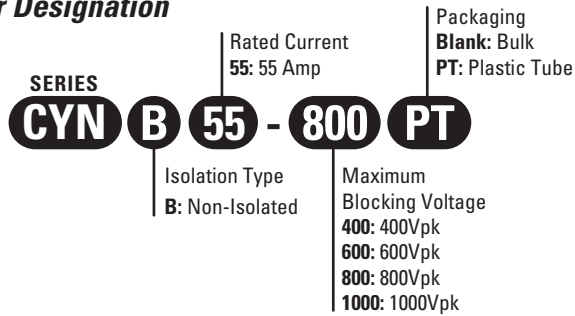
1. Not intended for continuous current use above 50A<sub>RMS</sub> (Fig 2); for high surge conditions only, Continuous use above 50A<sub>RMS</sub> may exceed PCB solder melting temperatures.
2. All parameters at 25 degrees C unless otherwise specified.

ISO9001 Certified

### Thermal Resistances

		SYMBOL	RATING
Junction to Case (AC)	T0-220AB	$R_{th(j-c)}$	1.0°C/W
Junction to Ambient	T0-220AB	$R_{th(j-a)}$	60°C/W

### Part Number Designation



Weight: 2.3g (0.08 oz)

### Dimensions

REF.	Millimeters			Inches		
	Min.	Typ.	Max.	Min.	Typ.	Max.
A	15.24		15.75	0.6		0.62
B		3.23			0.127	
C	12.78		13.79	0.503		0.543
D	9.96		10.36	0.392		0.408
E	0.69		0.94	0.027		0.037
F	1.22		1.32	0.048		0.052
G	4.62		4.83	0.182		0.19
H	0.46		0.61	0.018		0.024
I	2.49		2.84	0.098		0.112
J	2.39		2.69	0.094		0.106
K	6.48		6.88	0.255		0.271
L	3.78		3.89	0.149		0.153
M	15.49	16	16.51	0.61	0.63	0.65
N	2.59		2.9	0.102		0.114
O	0.99		1.55	0.039		0.061
P	0.99		1.55	0.039		0.061
Q		2.67			0.105	

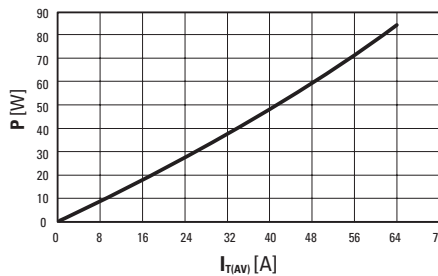


Fig. 1: Power dissipation versus average on-state current.

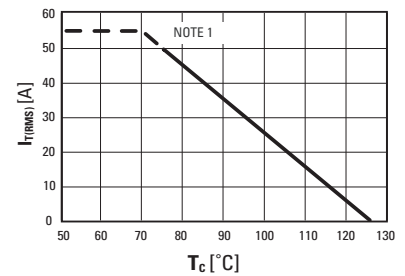


Fig. 2: RMS on-state current versus case temperature (full cycle)

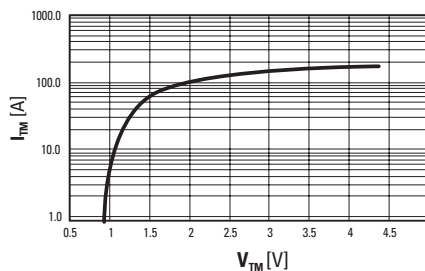


Fig. 3: On-state current versus on-state voltage (instantaneous values)

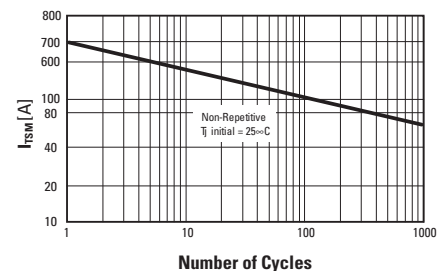


Fig. 4: Non-repetitive surge peak on-state current versus number of cycles.

ISO9001 Certified

Approvals

Pending

#### USA

Sales Support (877) 502-5500  
 Tech Support (877) 702-7700  
 Fax (619) 710-8540  
 Email: sales@crydom.com  
 Crydom Corp  
 2320 Paseo de las Americas, Suite 201  
 San Diego, CA 92154

#### EUROPE - UK

Telephone +44 (0) 1202 365070  
 Fax +44 (0) 1202 365090  
 Email: intsales@crydom.com  
 Crydom International Ltd.  
 7 Cobham Road  
 Ferndown Industrial Estate  
 Wimborne, Dorset BH21 7PE

#### Germany

Telephone +49 (0) 180 3000 506

#### ASIA - Thailand

Telephone +66 (0)2 665 2517  
 Fax +66 (0)2 665 2588  
 Crydom Asia  
 18/8 Fico Place 12th Floor  
 Soi Sukhumvit 21 (Asoke)  
 Klongtoey Nua, Wattana  
 Bangkok, Thailand 10110