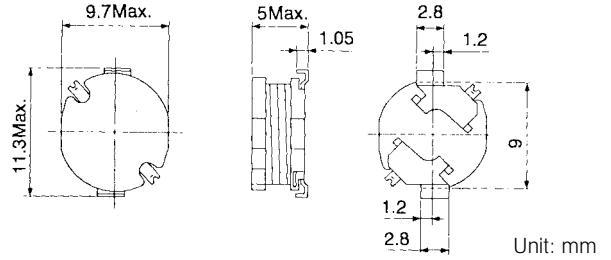


TYPE D10F

For Reflow Soldering

Frequency Range: 1kHz ~ 1MHz

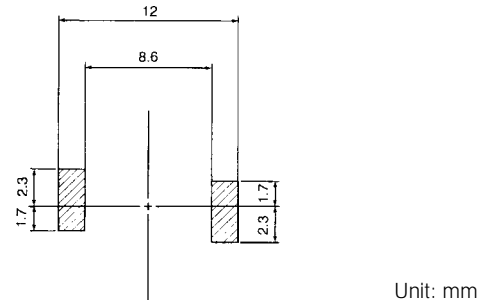
Inductance Range: 10 ~ 1500 μ H



Features

- Low profile SMD Type (5mm high)
- Suitable for large current
- Suitable for reflow soldering
- Available on tape and reel for automatic insertion

Recommended patterns:



STANDARD PARTS SELECTION GUIDE

(1) Inductance is measured by LCR-meter 4284A (HP) or equivalent.
 (2) DC resistance is measured by Digital Multimeter TR6871 (Advantest) or equivalent.

(3) Maximum allowable DC current is that which causes a 10% inductance reduction from the initial value, or coil temperature to rise by 40°C, whichever is smaller. (Reference ambient temperature 20°C).

TYPE D10F

TOKO Part Number	Inductance ⁽¹⁾ L (μ H)	Tolerance	Test Frequency (kHz)	DC Resistance ⁽²⁾ (Ω) max.	Rated DC Current ⁽³⁾ (A) max.
A814AY-100M=P3	10	$\pm 20\%$	100	0.047	2.60
A814AY-120M=P3	12	$\pm 20\%$	100	0.050	2.48
A814AY-150M=P3	15	$\pm 20\%$	100	0.058	2.27
A814AY-180M=P3	18	$\pm 20\%$	100	0.067	2.15
A814AY-220M=P3	22	$\pm 20\%$	100	0.075	2.00
A814AY-270M=P3	27	$\pm 20\%$	100	0.087	1.84
A814AY-330M=P3	33	$\pm 20\%$	100	0.095	1.72
A814AY-390M=P3	39	$\pm 20\%$	100	0.12	1.58
A814AY-470K=P3	47	$\pm 10\%$	100	0.15	1.44
A814AY-560K=P3	56	$\pm 10\%$	100	0.18	1.28
A814AY-680K=P3	68	$\pm 10\%$	100	0.20	1.20
A814AY-820K=P3	82	$\pm 10\%$	100	0.23	1.09
A814AY-101K=P3	100	$\pm 10\%$	100	0.27	1.05
A814AY-121K=P3	120	$\pm 10\%$	100	0.33	0.92
A814AY-151K=P3	150	$\pm 10\%$	100	0.40	0.80
A814AY-181K=P3	180	$\pm 10\%$	100	0.53	0.73
A814AY-221K=P3	220	$\pm 10\%$	100	0.60	0.69
A814AY-271K=P3	270	$\pm 10\%$	100	0.84	0.60
A814AY-331K=P3	330	$\pm 10\%$	100	1.00	0.53
A814AY-391K=P3	390	$\pm 10\%$	100	1.09	0.49
A814AY-471K=P3	470	$\pm 10\%$	100	1.25	0.46
A814AY-561K=P3	560	$\pm 10\%$	100	1.63	0.41
A814AY-681K=P3	680	$\pm 10\%$	100	1.90	0.38
A814AY-821K=P3	820	$\pm 10\%$	100	2.44	0.34
A814AY-102K=P3	1000	$\pm 10\%$	100	2.80	0.31
A814AY-122K=P3	1200	$\pm 10\%$	100	3.67	0.27
A814AY-152K=P3	1500	$\pm 10\%$	100	4.37	0.25

Note: =P3 is added to each part number to indicate tape and reel packaging.

⚠ Please read PRECAUTIONS and NOTES sections of this catalog for safe operation. This catalog contains consumer grade specifications only. Detailed technical specifications are available upon request.