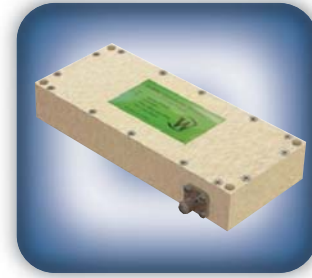




DECADES AHEAD[®]
high power RF devices

Werlatone[®], Inc.

17 Jon Barrett Road Patterson, New York 12563
T (845) 278 2220 www.werlatone.com
F (845) 278 3440 sales@werlatone.com



2-Way Combiner/Divider

Model D9853

Frequency: 700 - 2700 MHz

Power: 200 W CW
2 kW Peak

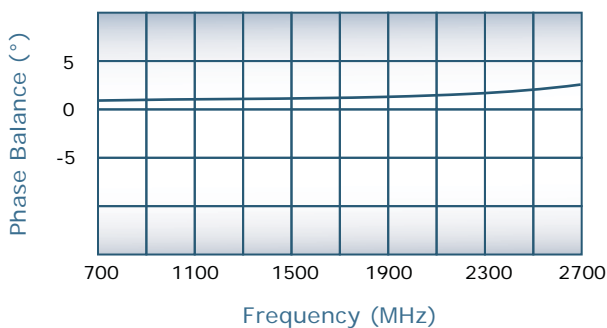
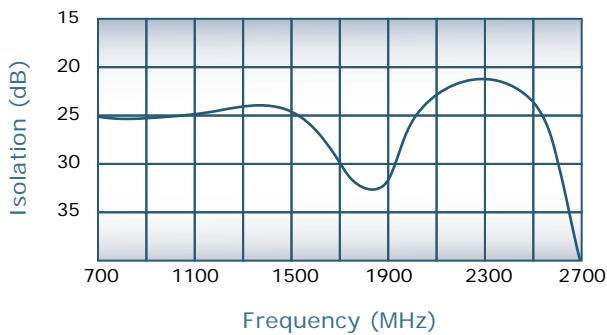
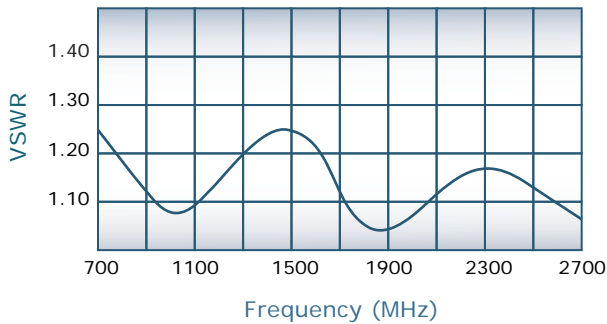
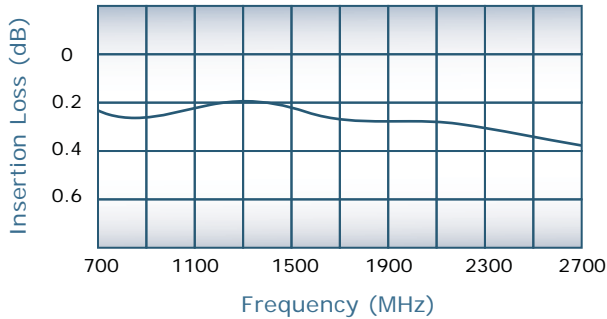
Insertion Loss: 0.5 dB Max.

VSWR: 1.30:1 Max.

Isolation: 20 dB Min.

Phase Balance: $\pm 5^\circ$ Max.

Amplitude Balance: 0.25 dB Max.



Notes

- All specifications guaranteed
- Test data provided with each unit shipped
- Alternate connector configurations upon request
- Weight: 0.75 Pounds
- Operating Temperature: -55°C to +75°C
- Unit will handle 100 Watt split into 2 antennas
- Unit will tolerate input failures on the adjacent port

Connector Configurations

Model	J1 (Sum Port)	J2, J3 (Input/Output)
D9853-10	N Female	N Female
D9853-12	N Female	SMA
D9853-102	SMA	SMA

