



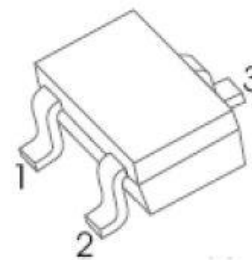
DAN217U



SWITCHING DIODE

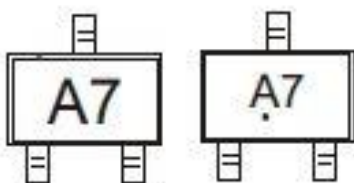
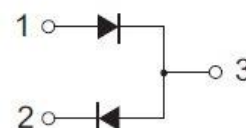


SOT-323



Features

- Small surface mounting type
- Two diode elements are connected in series
- MARKING:A7



Ordering Information

Part No.	Package	Packing
DAN217U	SOT-323	3000 / Tape & Reel

Absolute Maximum Ratings $T_A = 25^\circ\text{C}$ unless otherwise noted

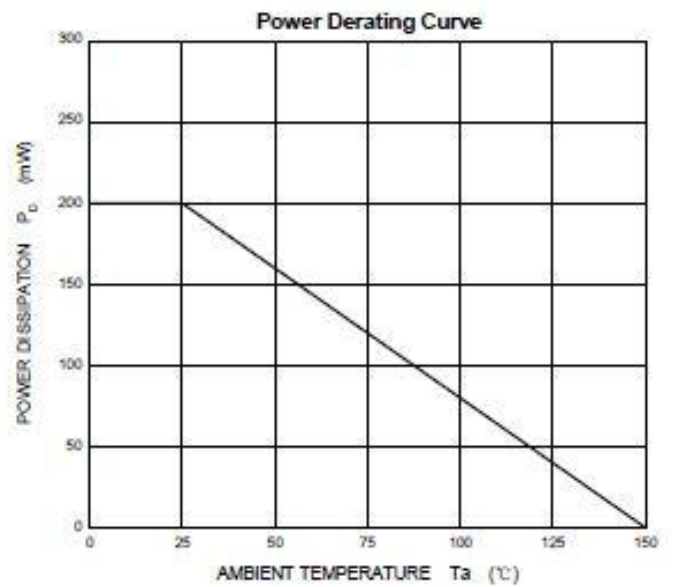
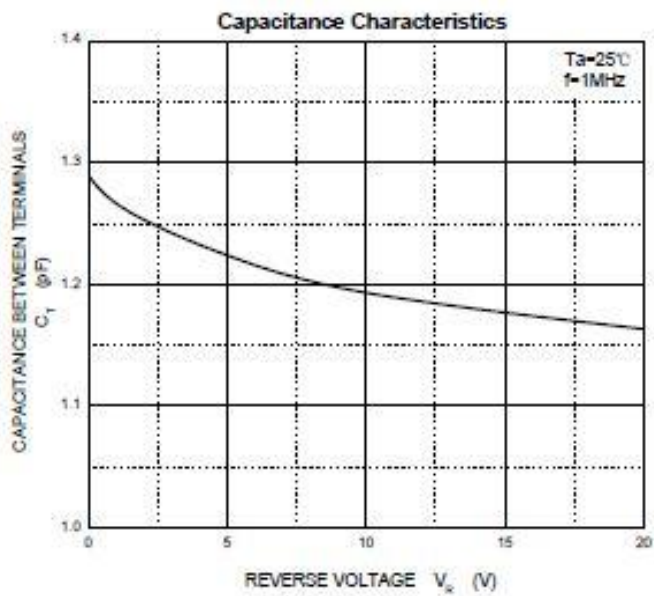
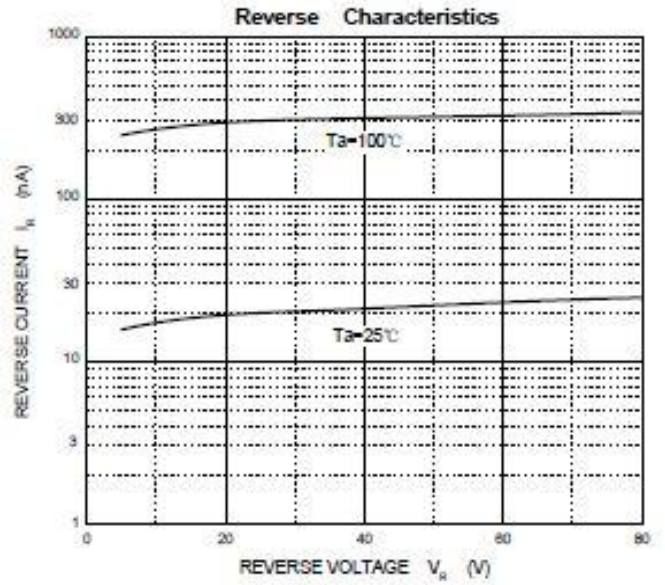
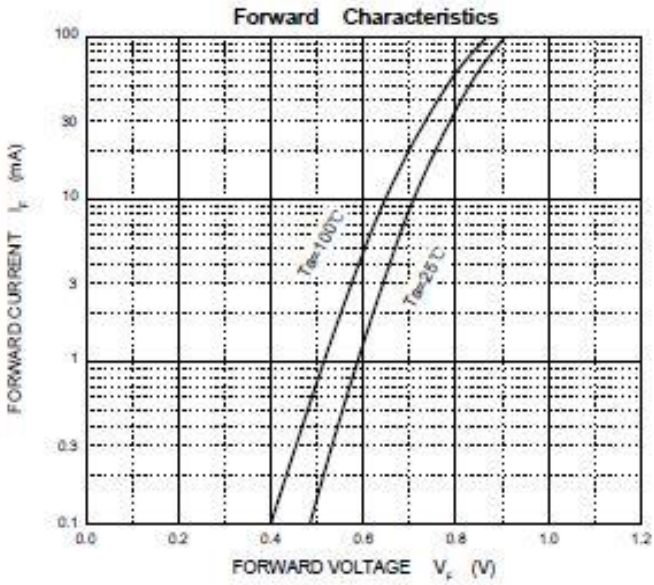
Symbol	Parameter	Limits	Units
V_{RM}	Non-Repetitive Peak Reverse Voltage	80	V
V_R	DC Blocking Voltage	80	V
I_{FM}	Forward Continuous Current	300	mA
I_{FSM}	Non-Repetitive Peak Forward Surge Current @ $t=8.3\text{ms}$	2	A
I_O	Average Rectified Output Current	100	mA
P_D	Power Dissipation	200	mW
T_J	Junction Temperature	150	$^\circ\text{C}$
T_{STG}	Storage Temperature Range	-55~+150	$^\circ\text{C}$

Electrical Characteristics $T_A = 25^\circ\text{C}$ unless otherwise noted

Symbol	Parameter	Test Condition	Limits		Unit
			Min	Max	
V_{BR}	Reverse Breakdown Voltage	$I_R=100\mu\text{A}$	80	-	V
I_R	Reverse Leakage Current	$V_R=70\text{V}$	-	0.2	μA
V_F	Forward Voltage	$I_F=100\text{mA}$	-	1.2	V

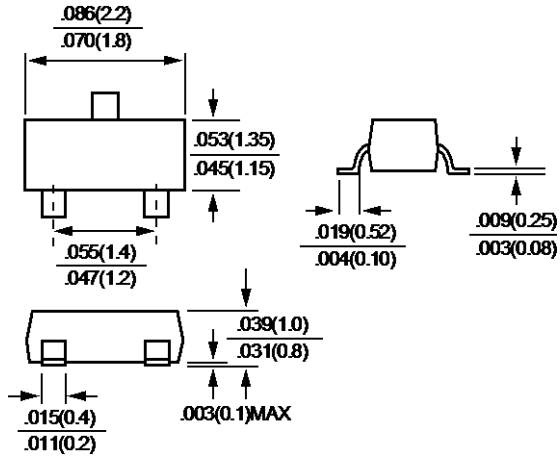


Rating and Characteristics Curves





Package Outline Dimensions

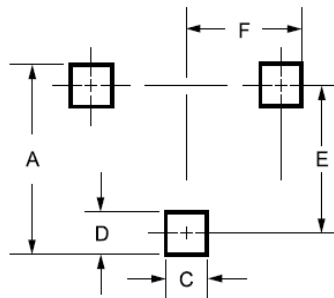


SOT-323

Dimensions in inches and (millimeters)

Suggested Pad Layout

Dimension (mm)	Outline	SOT-323 (mm)
A		~
B		~
C		0.5
D		0.8
E		2.2
F		~



Tap & Reel Specification

ITEM	SYMBOL	SOT-323 (mm)
Carrier width	A	2.25±0.05
Carrier length	B	2.55±0.05
Carrier depth	C	1.19±0.05
Sprocket hole	d	1.55±0.1
Reel outside diameter	D	178±2
Reel inner diameter	D1	54.4±1
Feed Hole diameter	D2	13±1
Sprocket hole position	E	1.75±0.1
Punch hole position	F	3.5±0.1
Punch hole pitch	P	4±0.1
Sprocket hole pitch	P0	4±0.1
Embossment center	P1	2±0.1
Tape width	W	8+3/-0.1
Reel width	W1	9.5±1
Reel width	W2	12.3±1

