

DB201 THRU DB207

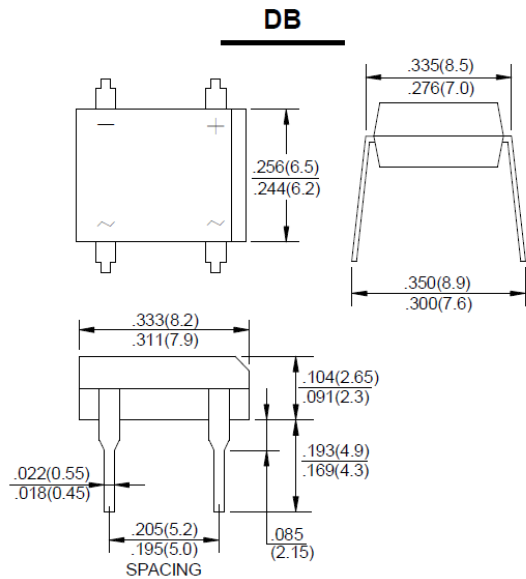
Silicon Bridge Rectifiers
Reverse Voltage - 50 to 1000 V
Forward Current - 3 A

Features

- The plastic package carries Underwriters Laboratory Flammability Classification 94V-0
- Ideal for printed circuit boards
- Low reverse leakage
- High forward surge current capability

Mechanical Data

- **Case:** Molded plastic body
- **Terminals:** Plated leads solderable per MIL-STD-750, Method 2026
- Mounting position: Any



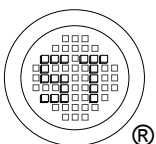
Dimensions in inches and (millimeters)

Absolute Maximum Ratings and Characteristics

Ratings at 25°C ambient temperature unless otherwise specified. Single phase, half wave, 60 Hz, resistive or inductive load. For capacitive load, derate current by 20%.

| Parameter | Symbols | DB201 | DB202 | DB203 | DB204 | DB205 | DB206 | DB207 | Units |
|--|-----------------|---------------|-------|-------|-------|-------|-------|-------|---------------------------|
| | Marking | DB201 | DB202 | DB203 | DB204 | DB205 | DB206 | DB207 | - |
| Maximum Recurrent Peak Reverse Voltage | V_{RRM} | 50 | 100 | 200 | 400 | 600 | 800 | 1000 | V |
| Maximum RMS Voltage | V_{RMS} | 35 | 70 | 140 | 280 | 420 | 560 | 700 | V |
| Maximum DC Blocking Voltage | V_{DC} | 50 | 100 | 200 | 400 | 600 | 800 | 1000 | V |
| Maximum Average Forward Rectified Current $T_A = 40^\circ\text{C}$ ¹⁾ | $I_{F(AV)}$ | 3 | | | | | | | A |
| Peak Forward Surge Current 8.3 ms Single Half Sine Wave Superimposed on Rated Load (JEDEC Method) | I_{FSM} | 70 | | | | | | | A |
| Rating for Fusing ($t < 8.3$ ms) | I^2t | 10 | | | | | | | A ² S |
| Maximum Forward Voltage at 1 A | V_F | 1.1 | | | | | | | V |
| Maximum Reverse Current at Rated DC Blocking Voltage $T_A = 25^\circ\text{C}$ $T_A = 100^\circ\text{C}$ | I_R | 10 0.5 | | | | | | | μA mA |
| Typical Junction Capacitance at $V_R = 4$ V, $f = 1$ MHz | C_J | 25 | | | | | | | pF |
| Typical Thermal Resistance ¹⁾ | $R_{\theta JA}$ | 40 | | | | | | | $^\circ\text{C}/\text{W}$ |
| Operating Junction and Storage Temperature Range | T_j, T_{stg} | - 65 to + 150 | | | | | | | $^\circ\text{C}$ |

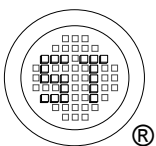
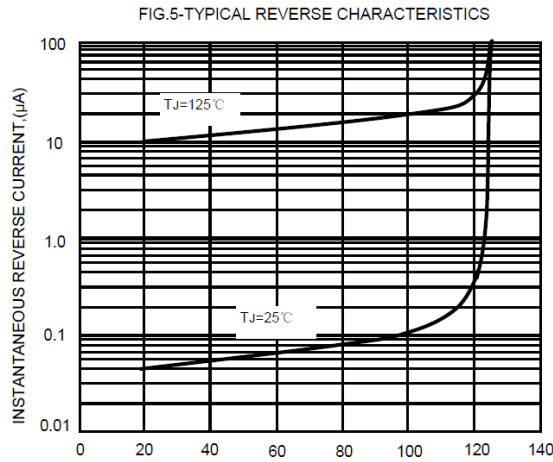
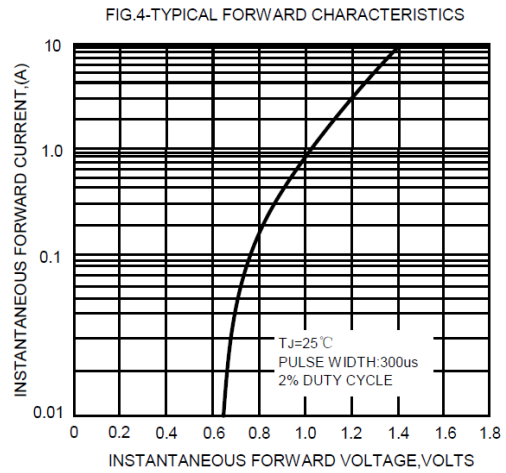
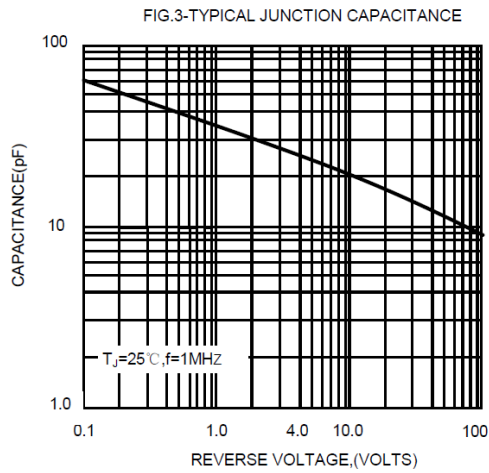
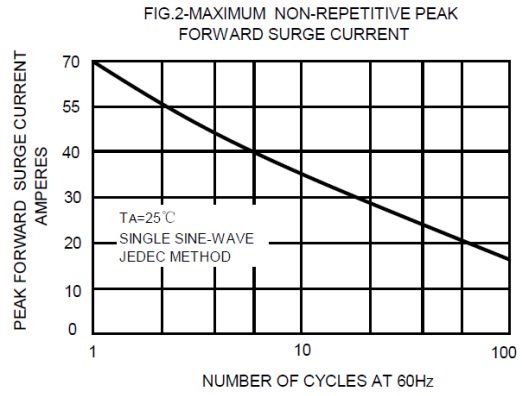
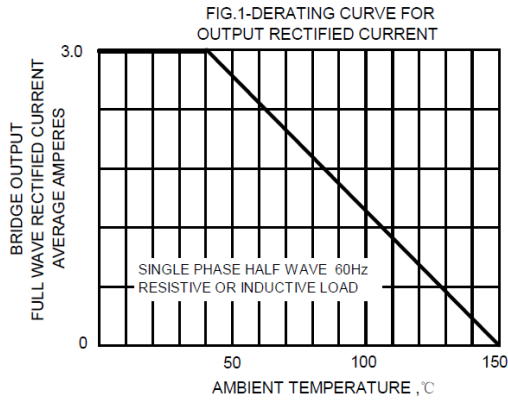
¹⁾ Unit mounted on P.C. board with 0.51" x 0.51" (13 x 13 mm) copper pads.



SEMTECH ELECTRONICS LTD.



DB201 THRU DB207



SEMTECH ELECTRONICS LTD.



ISO 18948:2008
Certificate No. 16071300



ISO 14001:2004
Certificate No. 7116



ISO 9001:2008
Certificate No. 50713410



BS-OHSAS 18001:2007
Certificate No. 7116



IECQ QC 080000
Certificate No. PCC-18294-148-1



SGS