



FEATURES:

- AC Input 100~277Vac
- Built-in Active PFC Function
- Protection: SCP / OVP / OTP / OCP
- High Operating Ambient Temp.: -30°C~+50°C
- Input Line Surges: 6KV
- Safety: Meet UL 8750 / Class 2 power unit
- EMI: Meet FCC Part15
- Comply with Indoor/Outdoor Waterproof (IP 67)
- Warranty: 3 years (refer to warranty policy)
- RoHS Compliant

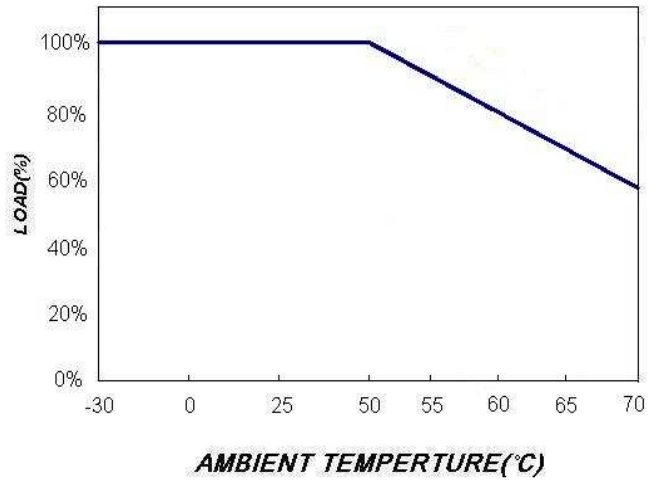
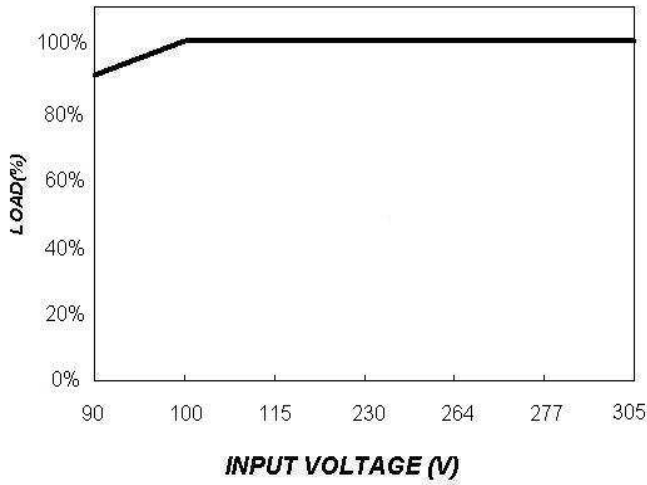
PRODUCT SPECIFICATION						
MODEL	DC OUTPUT POWER(W)	DC OUTPUT VOLTAGE(V)	OUTPUT CURRENT(A)	OUTPUT CURRENT TOLERANCE	EFFICIENCY	O/P NOISE(P-P, V)
DBFE-100U402-00	96	18-24	4	±3%	88%	1% Vo(max.)

ELECTRICAL SPECIFICATION	
INPUT VOLTAGE RANGE	90-305Vac, 127-431Vdc, Normal: 100-277Vac
INPUT FREQUENCY	Range: 47-63Hz, Normal: 50-60Hz
ACTIVE POWER FACTOR	>0.9@Full Load 100-277Vac
THD	<20% at 80%-Full Load 100-277Vac
TURN ON DELAY TIME	<1S at Full Load 100-277Vac
AC CURRENT	1.5A / 100Vac 0.6A/277Vac
INRUSH CURRENT (typ)	Cold Start 65A@230Vac
LEAKAGE CURRENT	<0.75mA
SHORT CIRCUIT PROTECTION	SCP and OVP will restart automatically after the fault condition is removed
OVER VOLTAGE PROTECTION	
OVER TEMP. PROTECTION	shut down and latch off o/p voltage , re-power on to recover
OVER CURRENT PROTECTION	120%~160% rated output power ; Hiccup mode
OPERATING TEMP.	-30°C~+50°C @Full Load 100-277Vac
STORAGE TEMP.	-40°C~+80°C
RELATIVE HUMIDITY	10% to +90%, non-cond.
SAFETY	Meet UL 8750 / Class 2 power unit
EMI	Meet FCC Part15
WITHSTAND VOLTAGE	I/P-O/P : 3.75KVAC, O/P-Grnd : 0.5KVAC, I/P-Grnd : 1.88KVAC
ISOLATION RESISTANCE	I/P-O/P, I/P-FG, O/P-FG :100M Ohms / 500VDC / 25°C / 70% RH
DIMENSION (L*W*H)	232 * 46.5 * 31 mm 【9.13 * 1.83 * 1.22 inch】

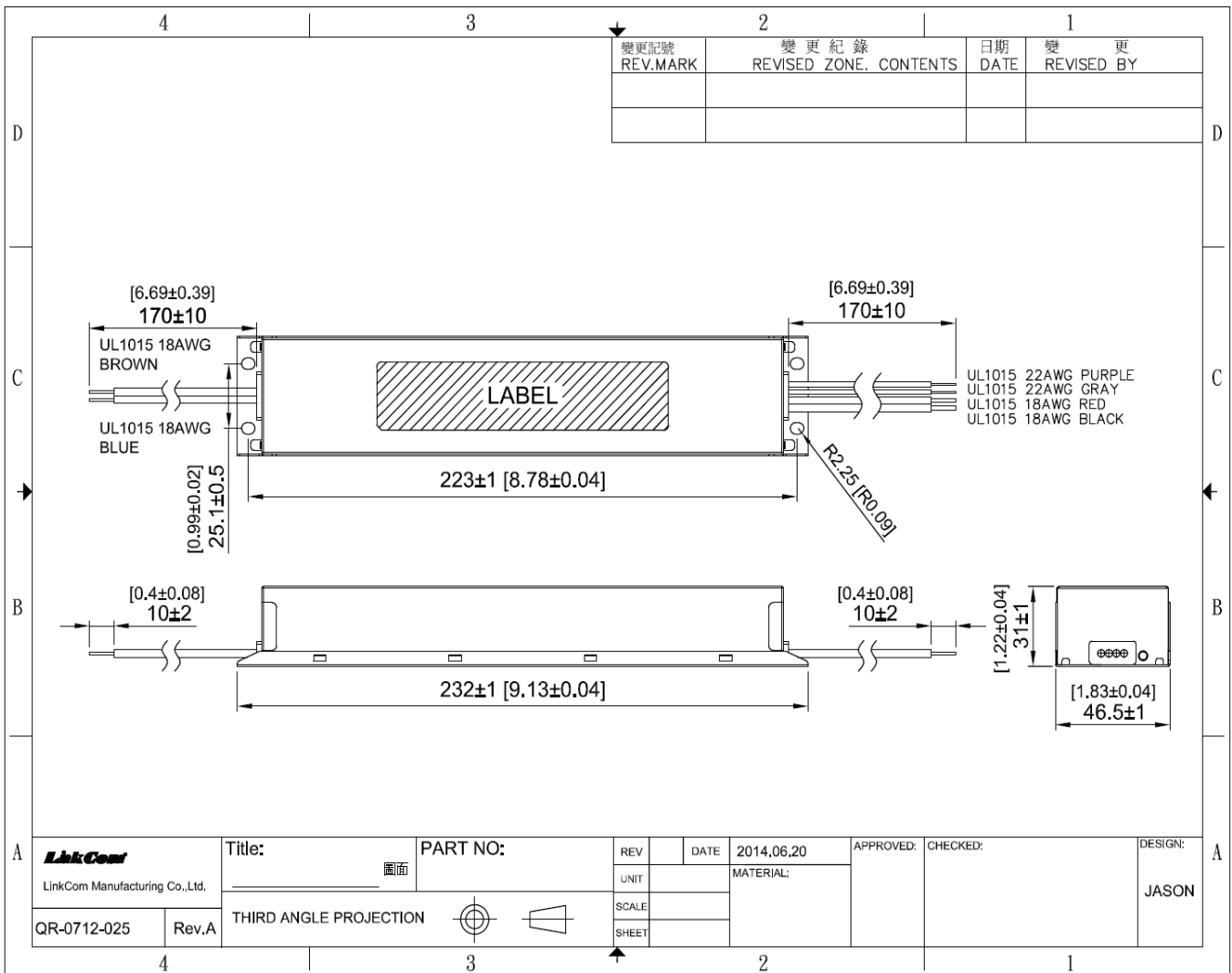
- (1) All parameters not specially mentioned are measured 230VAC input.
- (2) All specifications Typical @25°C, unless otherwise noted, at normal line and load.
- (3) Ripple and Noise measured directly at pins/terminals at nom. load, 0.1uF bypass and 47uF electrolytic, pk-pk @20MHz bandwidth.
- (4) Specified for free-air convection cooling.
- (5) Minimum load is NOT required for proper operation .
- (6) 100% Production Tested.

* REFERENCE: www.linkcom.com.tw
 * Please contact sales@linkcom.com.tw, sales@linkcomusa.com for more information

DERATING CURVE



DIMENSIONS



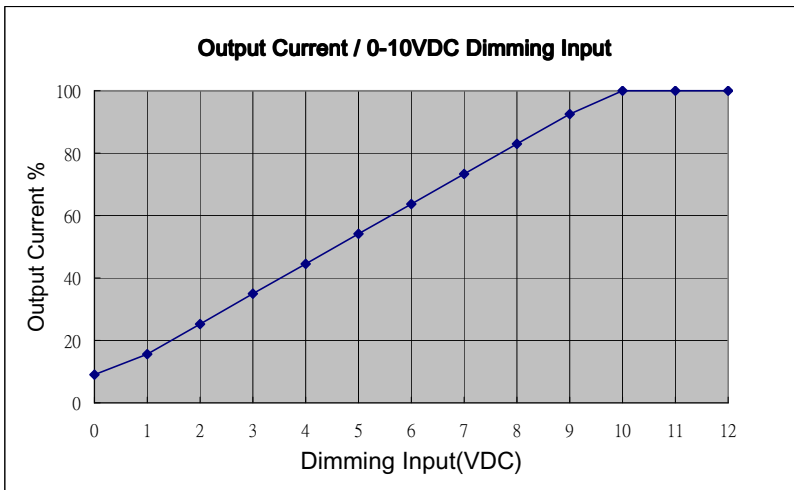
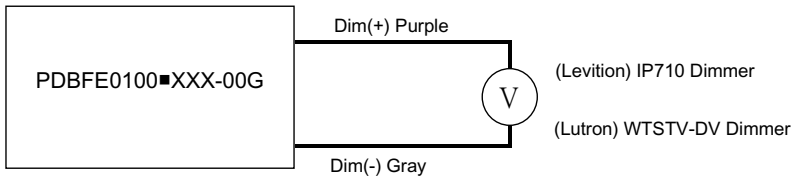
* REFERENCE: www.linkcom.com.tw

100-DBFE Series

DIMMING OPERATION

Parameters	Minimum	Typical	Maximum
Absolute maximum voltage on the 0-10(+) Purple Wire	-2V	—	12V
Source current on the 0-10V(+) Purple Wire	0mA	—	1mA

0-10V Analog Dimming Typical Circuit



Notes:

1. 0-10V Dimmable must be connect to extra two wires +Purple/-Gray on the output side.
2. When connected to different Dimmers, 0-10V dimmable version will have a $\pm 10\%$ output current tolerance.
3. Recommended dimmers are Leviton IP710, Lutron NTSTV-DV or equivalent.
4. If output side wires +Purple/-Gray are open, the output current I_o will be 100%.