

## 300-DBFE Series

**FEATURES:**

- AC Input 100~277VAC
- Built-in Active PFC Function
- Protection: SCP / OVP / OTP
- 1-10V Dimming Control
- Flicker Free
- High Operating Ambient Temp.: -40°C~+60°C
- Surge protection: L-N 6KV, L-FG/N-FG 15KV
- Safety: UL 8750 / PSE
- EMI: FCC Part 15 Class B / CE
- IP 67 Compliant
- Warranty: 5 years (refer to warranty policy)
- RoHS Compliant

**PRODUCT SPECIFICATION**

MODEL	DC OUTPUT POWER (W)	DC OUTPUT VOLTAGE (V)	OUTPUT CURRENT (A)	OUTPUT CURRENT TOLERANCE	EFFICIENCY (Typ.)				Power Factor (Typ.)			
					100VAC	120VAC	200VAC	277VAC	100VAC	120VAC	200VAC	277VAC
DBFE-300U133	300	16-24	12.5	±5%	89.0%	90.0%	93.0%	94.0%	0.98	0.98	0.95	0.95
DBFE-300U832	298.8	18-36	8.3	±5%	89.0%	90.0%	93.0%	94.0%	0.98	0.98	0.95	0.95
DBFE-300U632	300	26-48	6.25	±5%	89.0%	90.0%	93.0%	94.0%	0.98	0.98	0.95	0.95

**Input Specifications**

	Min.	Typ.	Max.	Units	Conditions/Description
Input Voltage Range	90		305	Vac	
Input Frequency Range	47		63	Hz	
Input Current		3.4		A	100VAC in
Inrush Current			80	A	230VAC in, 25°C Cold start
Leakage Current			0.7	mA	277VAC in
Power Factor (PF)	0.9				
Total Harmonics Distortion (THD)			15	%	100-277VAC, 100% load

**Output Specifications**

	Min.	Typ.	Max.	Units	Conditions/Description
Line Regulation			±3	%	
Load Regulation			±3	%	
Output Current Regulation			±5	%	
Ripple and Noise (pk-pk)			0.5	V	20MHz Bandwidth. See note (3)
Ripple Current	<30% of rated output current				*Measured at electronic load LED mode and nominal input voltage with DC10V dimming.
Turn-on Delay Time			3	s	*Measured at 100-277VAC and at full load

**Protection Functions**

	Min.	Typ.	Max.	Units	Conditions/Description
Short Circuit Protection					Auto recovery
Over Voltage Protection					Auto recovery
Over Temp Protection (Tc)		105		°C	Auto recovery

**Environmental Conditions**

	Min.	Typ.	Max.	Units	Conditions/Description
Operating Temperature (Ta)	-40		60	°C	Non-condensing
Operating Humidity	10		90	%RH	
Operating Case Temperature (Tc)			95	°C	Case temperature measured at the case hot spot Measured at 120Vac, Ta 50°C
Storage Temperature	-40		80	°C	
Storage Humidity	10		90	%RH	
Life Time	Measured at 277Vac, 58,000 hours at Tc 75°C .				
Dimensions(L*W*H)	274.2 * 90 * 43.8 mm 10.79 * 3.54 * 1.72 inch				
Weight		2000		g	

**300-DBFE Series**

0-10V Dimmable

<b>EMC Compliance and Safety</b>			
<b>EMC Compliance</b>			
<b>Conducted and Radiated Emission</b>		Comply with EN 55015 (CISPR15) , Comply with FCC Part 15 Class B	
<b>Harmonic Current Emissions</b>		Comply with EN 61000-3-2 Class C	
<b>Voltage Fluctuations &amp; Flicker</b>		Comply with EN 61000-3-3	
<b>EMS Standards</b>	<b>Electrostatic Discharge (ESD)</b>	Comply with IEC 61000-4-2	8 KV air discharge, 4 KV contact discharge
	<b>RF Electromagnetic Field Susceptibility</b>	Comply with IEC 61000-4-3	
	<b>Electrical Fast Transient</b>	Comply with IEC 61000-4-4	
	<b>Surge Immunity</b>	Comply with IEC 61000-4-5	L-N 6KV, L-FG/N-FG 15KV
	<b>Conducted RF Disturbances</b>	Comply with IEC 61000-4-6	
	<b>Power Frequency Magnetic Field</b>	Comply with IEC 61000-4-8	
	<b>Voltage Dips</b>	Comply with IEC 61000-4-11	
<b>Safety</b>			
<b>UL</b>	<b>UL 8750</b>		
<b>PSE</b>	<b>Comply with PSE</b>		

**Notes**

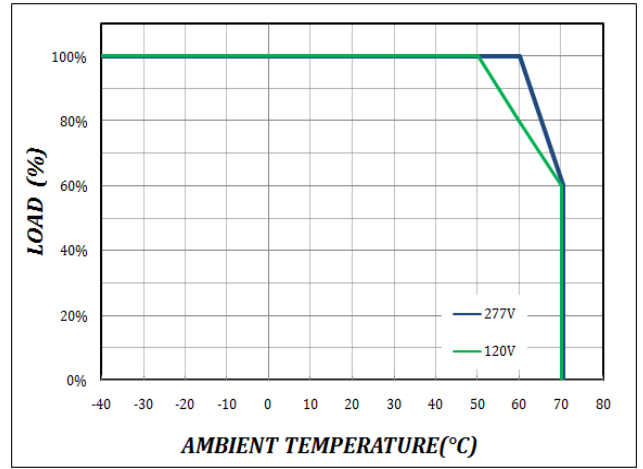
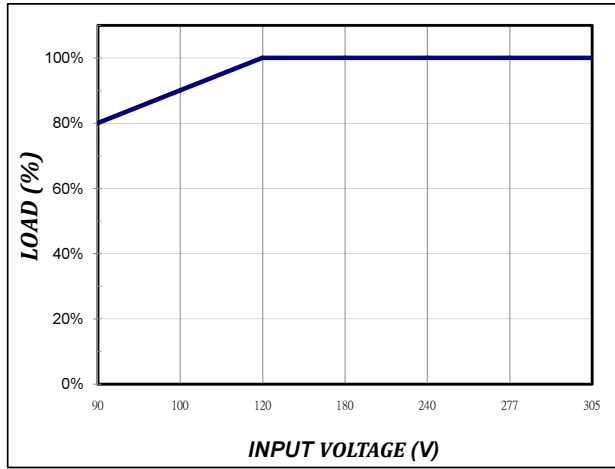
- (1) All parameters not specially mentioned are measured 230VAC input.
- (2) All specifications Typical @25°C, unless otherwise noted, at normal line and load.
- (3) Ripple and Noise measured directly at pins/terminals at nom. load, 0.1uF bypass and 47uF electrolytic, pk-pk @20MHz bandwidth.
- (4) Specified for free-air convection cooling.
- (5) Minimum load is NOT required for proper operation .

\* REFERENCE: [www.linkcom.com.tw](http://www.linkcom.com.tw)

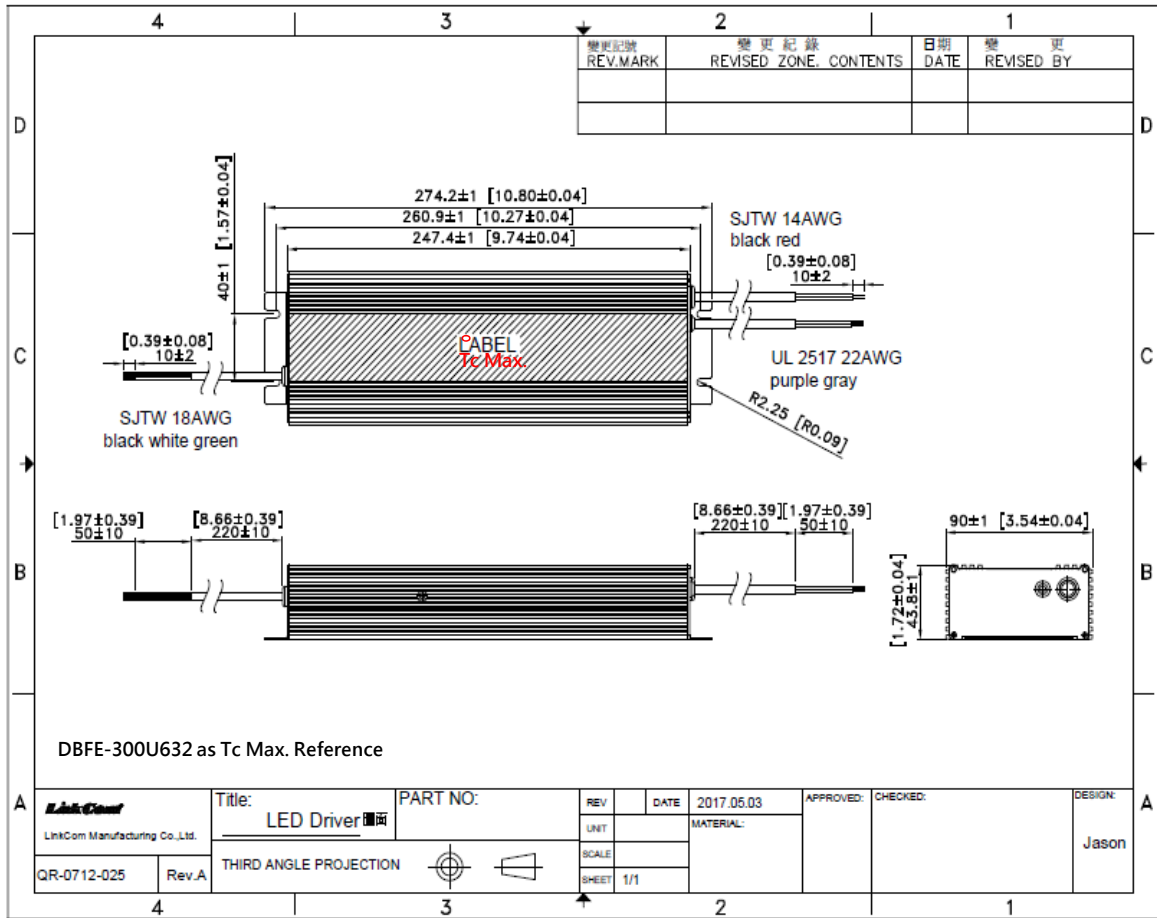
\* Please contact [sales@linkcom.com.tw](mailto:sales@linkcom.com.tw), [sales@linkcomusa.com](mailto:sales@linkcomusa.com) for more information

**300-DBFE Series**

**DERATING CURVE**



**DIMENSIONS**



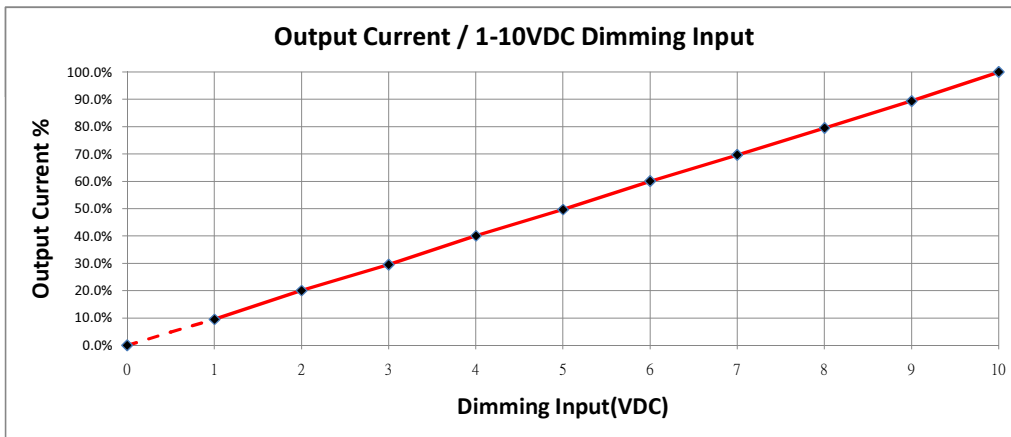
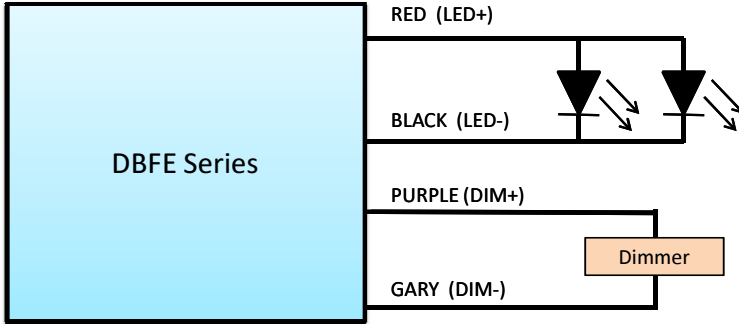
\* The above mechanical diagram is for reference only. The actual product should be in accordance with the specification for approval.

\* REFERENCE: [www.linkcom.com.tw](http://www.linkcom.com.tw)

**300-DBFE Series**

**DIMMING OPERATION**

Parameters	Minimum	Typical	Maximum
Absolute maximum voltage on the 1-10(+) Purple Wire	1V	—	10V
Source current on the 1-10V(+) Purple Wire	0mA	—	1mA

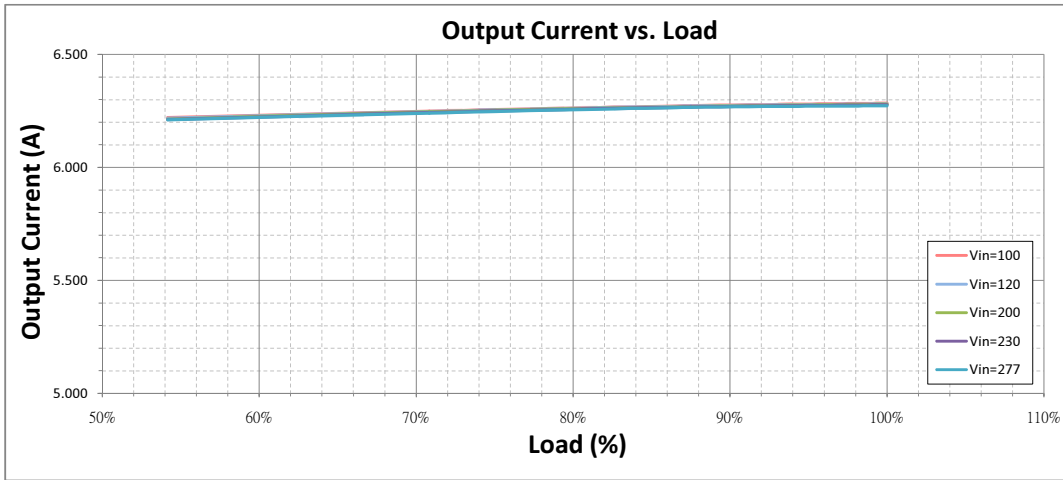


**Notes:**

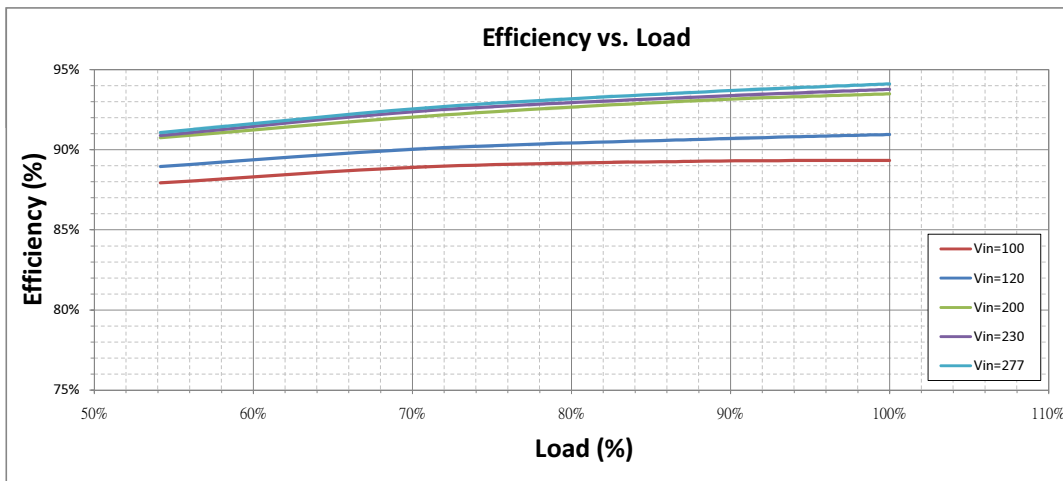
1. Purple and Gray wires on the output side are used for 1-10V dimming.
2. Recommended dimmers are Leviton IP710, Lutron NTSTV-DV or equivalent.
3. When dimming wires +Purple/-Gray are left open, the output current will be at 100%.

**300-DBFE Series**

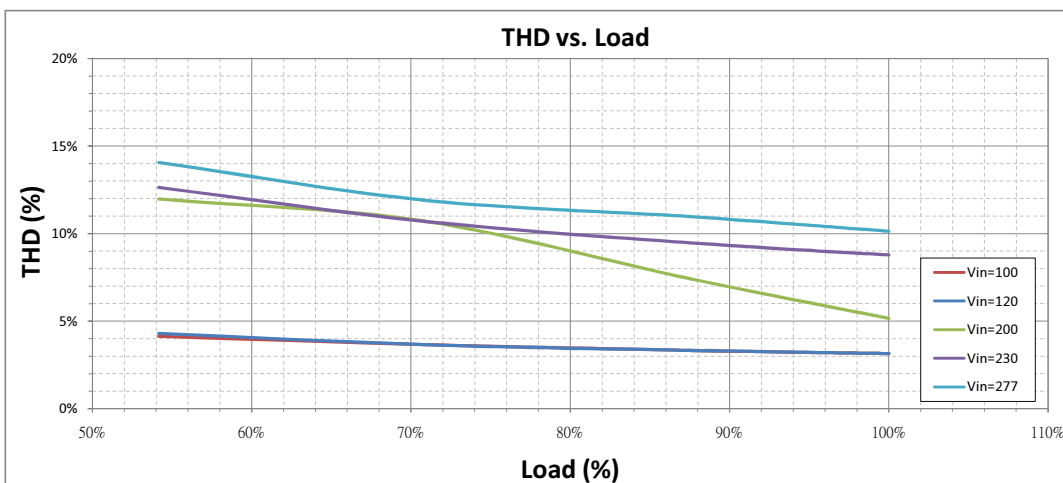
Output Current vs. Load (DBFE-300U632)



Efficiency vs. Load (DBFE-300U632)



THD vs. Load (DBFE-300U632)



**PF vs. Load (DBFE-300U632)**

