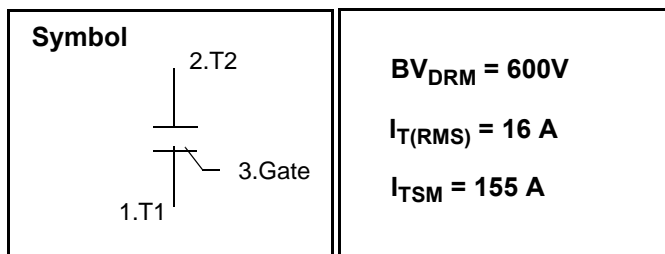


## Triac / Sensitive Gate

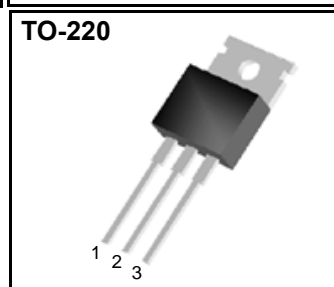
### Features

Repetitive Peak Off-State Voltage : 600V  
 R.M.S On-State Current (  $I_{T(RMS)} = 16 \text{ A}$  )  
 High Commutation  $dv/dt$   
 Sensitive Gate Triggering 3 Mode  
 (  $I_{GT} = 10\text{mA}$  )  
 Non-isolated Type



### General Description

This device is sensitive gate triggering triac suitable for direct coupling to TTL, HTL, CMOS and application such as various logic functions, medium power AC switching applications, such as fan speed control, lighting controllers and home appliance equipment.



### Absolute Maximum Ratings ( $T_J = 25^\circ\text{C}$ unless otherwise specified )

Symbol	Parameter	Condition	Ratings	Units
$V_{DRM}$	Repetitive Peak Off-State Voltage	Sine wave, 50 to 60 Hz, Gate Open	600	V
$I_{T(RMS)}$	R.M.S On-State Current	$T_C = 36^\circ\text{C}$	16	A
$I_{TSM}$	Surge On-State Current	One Cycle, 50Hz/60Hz, Peak, Non-Repetitive	145/155	A
$I^2t$	$I^2t$ for fusing	$t = 10\text{ms}$	105	$\text{A}^2\text{s}$
$P_{GM}$	Peak Gate Power Dissipation	$T_C = 36^\circ\text{C}$ , Pulse width 1.0us	5.0	W
$P_{G(AV)}$	Average Gate Power Dissipation	Over any 20ms period	0.5	W
$I_{GM}$	Peak Gate Current	$t_p = 20\mu\text{s}$ , $T_J = 125^\circ\text{C}$	2.0	A
$V_{GM}$	Peak Gate Voltage	$t_p = 20\mu\text{s}$ , $T_J = 125^\circ\text{C}$	10	V
$T_J$	Operating Junction Temperature		- 40 ~ 125	$^\circ\text{C}$
$T_{STG}$	Storage Temperature		- 40 ~ 150	$^\circ\text{C}$

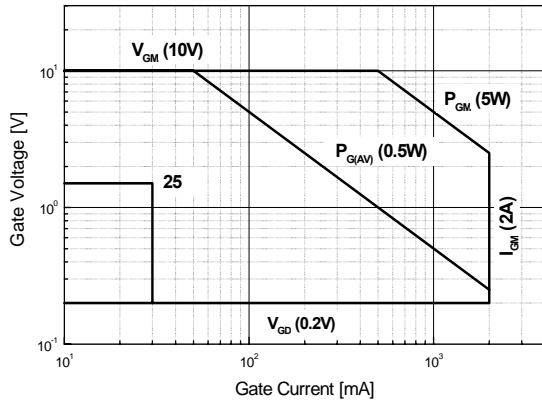
# DBT139-600

## Electrical Characteristics

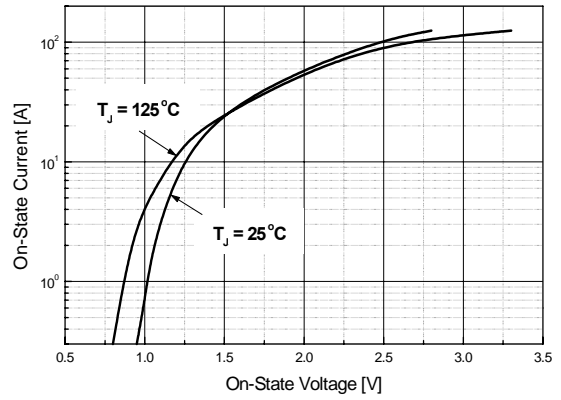
Symbol	Items	Conditions	Ratings			Unit
			Min.	Typ.	Max.	
$I_{DRM}$	Repetitive Peak Off-State Current	$V_D = V_{DRM}$ , Single Phase, Half Wave $T_J = 125\text{ }^\circ\text{C}$			2.0	mA
$V_{TM}$	Peak On-State Voltage	$I_T = 20\text{ A}$ , Inst. Measurement			1.6	V
$I_{GT1}^+$	Gate Trigger Current	$V_D = 6\text{ V}$ , $R_L = 10$			10	mA
$I_{GT1}^-$					10	
$I_{GT3}^-$					10	
$I_{GT3}^+$			IV		25	
$V_{GT1}^+$	Gate Trigger Voltage	$V_D = 6\text{ V}$ , $R_L = 10$			1.5	V
$V_{GT1}$					1.5	
$V_{GT3}$					1.5	
$V_{GT3}^+$			IV		2.5	
$V_{GD}$	Non-Trigger Gate Voltage	$T_J = 125\text{ }^\circ\text{C}$ , $V_D = 1/2 V_{DRM}$	0.2			V
$(dv/dt)_c$	Critical Rate of Rise Off-State Voltage at Commutation	$T_J = 125\text{ }^\circ\text{C}$ , $[di/dt]_c = -6.0\text{ A/ms}$ , $V_D = 2/3 V_{DRM}$	10			V/ $\mu\text{s}$
$I_H$	Holding Current			20		mA
$R_{th(j-c)}$	Thermal Impedance	Junction to case ( Half Cycle )			1.7	$^\circ\text{C/W}$
$R_{th(j-a)}$	Thermal Impedance	Junction to ambient ( Free Air )			60	$^\circ\text{C/W}$

# DBT139-600

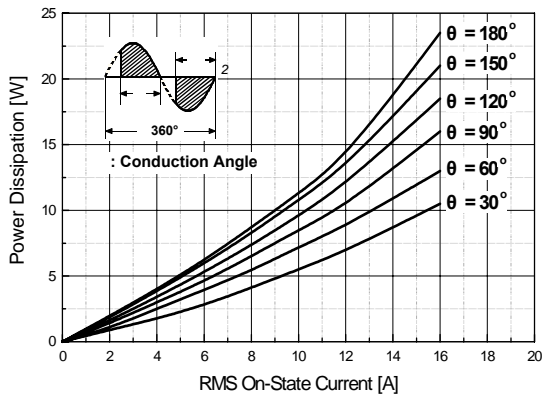
**Fig 1. Gate Characteristics**



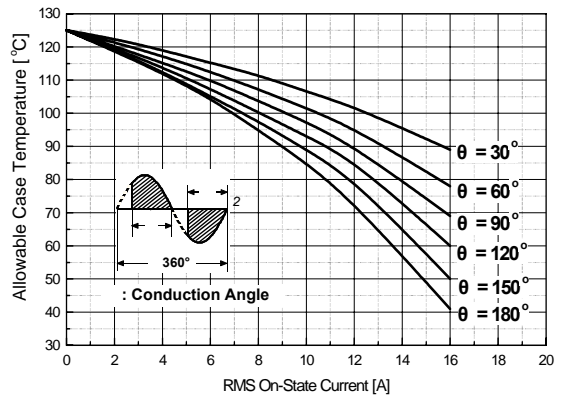
**Fig 2. On-State Voltage**



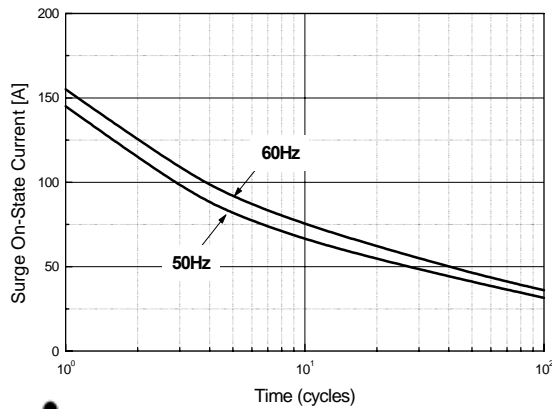
**Fig 3. On State Current vs. Maximum Power Dissipation**



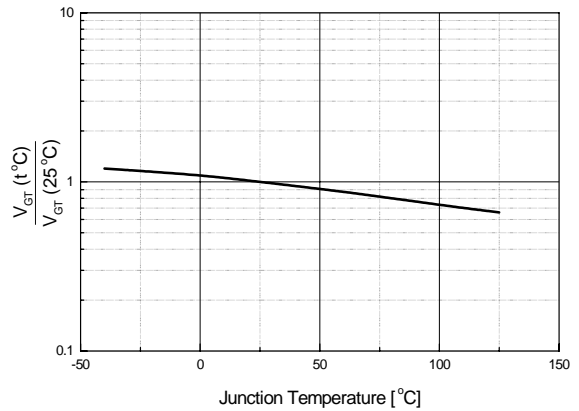
**Fig 4. On State Current vs. Allowable Case Temperature**



**Fig 5. Surge On-State Current Rating ( Non-Repetitive )**

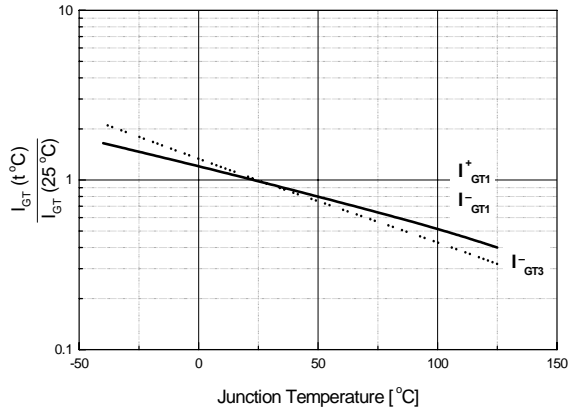


**Fig 6. Gate Trigger Voltage vs. Junction Temperature**

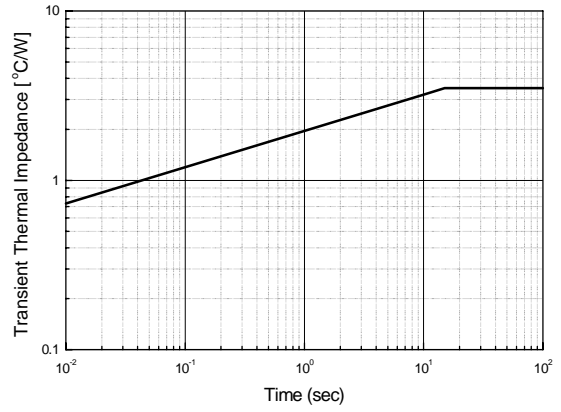


# DBT139-600

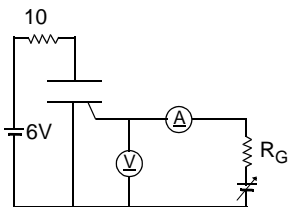
**Fig 7. Gate Trigger Current vs. Junction Temperature**



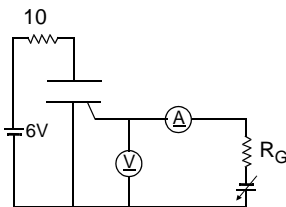
**Fig 8. Transient Thermal Impedance**



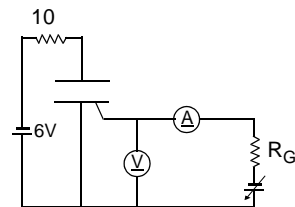
**Fig 9. Gate Trigger Characteristics Test Circuit**



Test Procedure



Test Procedure



Test Procedure

## DBT139-600

## TO-220 Package Dimension

Dim.	mm			Inch		
	Min.	Typ.	Max.	Min.	Typ.	Max.
A	9.7		10.1	0.382		0.398
B	6.3		6.7	0.248		0.264
C	9.0		9.47	0.354		0.373
D	12.8		13.3	0.504		0.524
E	1.2		1.4	0.047		0.055
F		1.7			0.067	
G		2.5			0.098	
H	3.0		3.4	0.118		0.134
I	1.25		1.4	0.049		0.055
J	2.4		2.7	0.094		0.106
K	5.0		5.15	0.197		0.203
L	2.2		2.6	0.087		0.102
M	1.25		1.55	0.049		0.061
N	0.45		0.6	0.018		0.024
O	0.6		1.0	0.024		0.039
		3.6			0.142	

