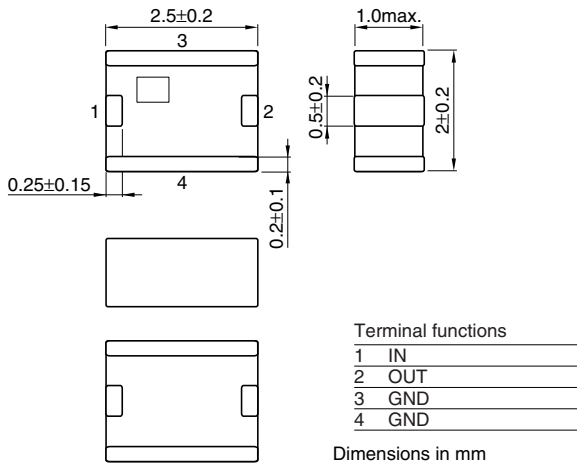


# Multilayer Chip Band Pass Filters For 5.0GHz W-LAN

Conformity to RoHS Directive

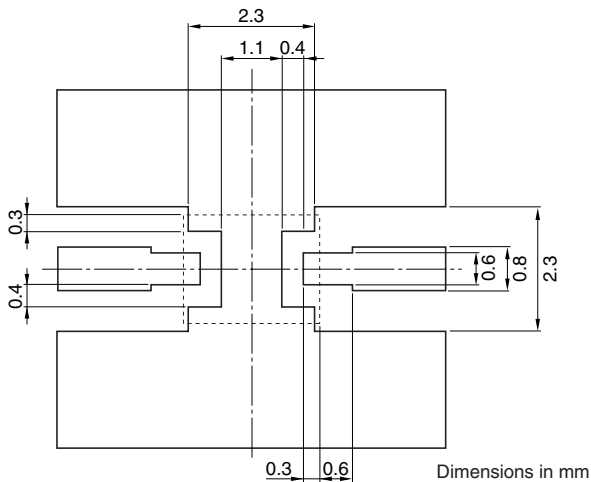
DEA Series DEA255375BT-2076A1

## SHAPES AND DIMENSIONS



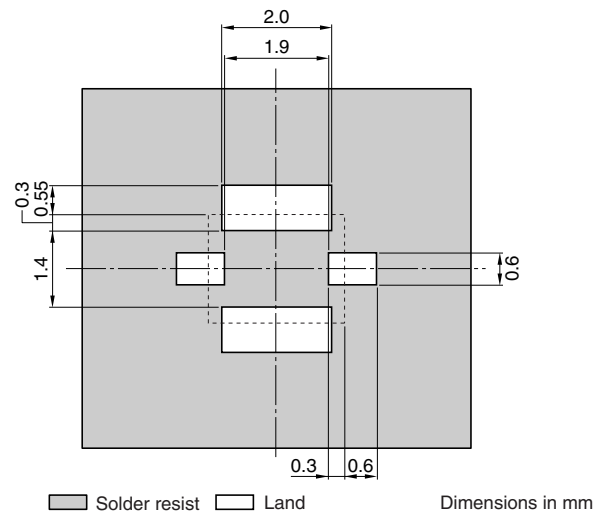
## RECOMMENDED PC BOARD PATTERNS

### LAND



Line width be designed to match 50Ω characteristic impedance depending on PCB material and thickness.

### SOLDER RESIST



## ELECTRICAL CHARACTERISTICS

Item			Minimum value	Typical value	Maximum value
Center frequency	[5375MHz]		—	—	—
Insertion loss	[25°C]	[4900 to 5850MHz]	(dB)	—	1.2
	[-40 to +85°C]	[4900 to 5850MHz]	(dB)	—	1.5
VSWR		[4900 to 5850MHz]	—	—	2.0
Ripple in Pass Band		[4900 to 5850MHz]	(dB)	—	1.0
Attenuation	[25°C]	[824 to 1910MHz]	(dB)	50	—
	[-40 to +85°C]	[9880 to 11700MHz]	(dB)	15	—
Temperature range	Operating	(°C)	-40	—	+85
	Storage	(°C)	-40	—	+85

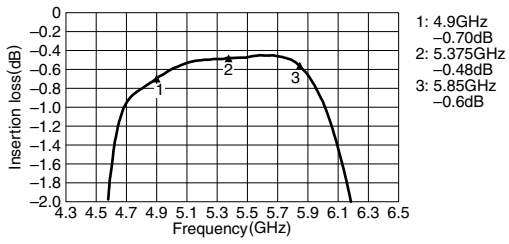
• Ta: +25°C

• Conformity to RoHS Directive: This means that, in conformity with EU Directive 2002/95/EC, lead, cadmium, mercury, hexavalent chromium, and specific bromine-based flame retardants, PBB and PBDE, have not been used, except for exempted applications.

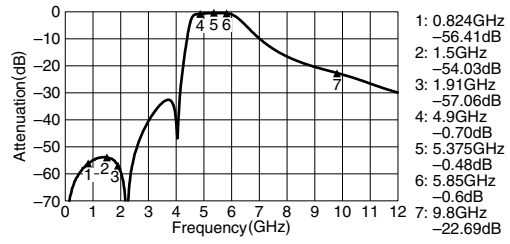
• All specifications are subject to change without notice.

### FREQUENCY CHARACTERISTICS

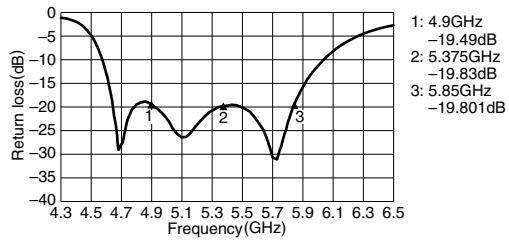
#### INSERTION LOSS



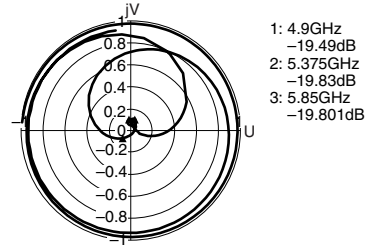
#### ATTENUATION



#### RETURN LOSS



#### VSWR



• All specifications are subject to change without notice.