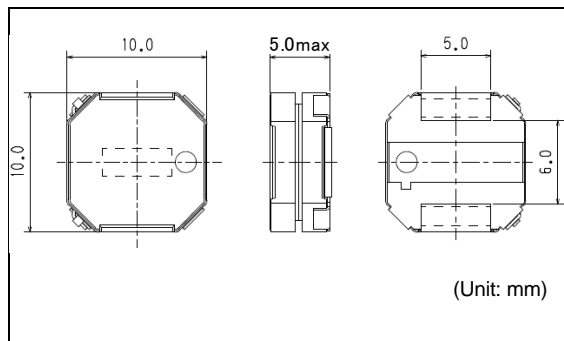
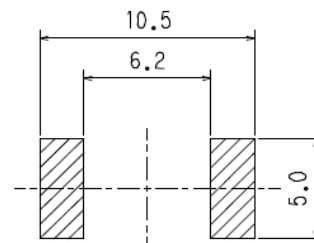


## DEM10050C

Inductance Range: 1.5~33μH



### Recommended patterns 推荐焊盘尺寸



(Unit: mm)

### FEATURES 特点

- 10.3× 10.3mm Max. square, 5.0mm Max. height.
- Magnetically shielded construction and low DC resistance.
- Suitable for large currents.
- RoHS compliant.
- Halogen Free
- 最大10.3×10.3毫米的平面，最大高度5.0毫米
- 磁性屏蔽结构和低直流电阻
- 适合大电流
- 符合RoHS指令
- 无卤素

### TOKO STANDARD PART NUMBERS 东光标准零件号码

#### TYPE DEM10050C (Quantity/reel; 500 PCS)

东光零件号码	电感值 <sup>(1)</sup>	公差	最大直流电阻 <sup>(2)</sup>	最大电感值减小电流 <sup>(3)</sup>	最大温度上升电流 <sup>(3)</sup>
TOKO Part Number	Inductance <sup>(1)</sup> (μH)	Tolerance (%)	DC Resistance <sup>(2)</sup> ±20% (mΩ)	Inductance Decrease Current <sup>(3)</sup> (A) Max. (Typ.) $\frac{\Delta L}{L} = 30\%$	Temperature Rise Current <sup>(3)</sup> ΔT=40°C (A) Max. (Typ.)
1274AS-H-1R5N	1.5	±30	6.4	15.3 (20.4)	8.9 (10.5)
1274AS-H-2R2N	2.2	±30	8.0	12.6 (16.8)	8.0 (9.5)
1274AS-H-3R3N	3.3	±30	9.5	10.8 (14.4)	7.4 (8.7)
1274AS-H-4R7N	4.7	±30	11.2	9.5 (12.7)	6.7 (7.9)
1274AS-H-6R8N	6.8	±30	17.7	7.5 (10.0)	5.4 (6.4)
1274AS-H-100M	10	±20	25.3	6.2 (8.2)	4.4 (5.2)
1274AS-H-150M	15	±20	35.2	5.1 (6.8)	3.9 (4.6)
1274AS-H-220M	22	±20	56.7	4.2 (5.6)	2.9 (3.4)
1274AS-H-330M	33	±20	78.0	3.5 (4.7)	2.5 (3.0)

(1) Inductance is measured with a LCR meter 4284A\* or equivalent.

Test frequency at 100kHz

(2) DC Resistance is measured with a Digital Multimeter TR6871 (Advantest) or equivalent.

(3) Maximum allowable DC current is that which causes a 30% inductance reduction from the initial value, coil temperature to rise by 40°C, whichever is smaller.

(Reference ambient temperature 20°C)

\* Agilent Technologies

(1) LCR仪表4284A\*或者功能相同的仪器在100kHz下测试电感值。

(2) 通过数码万用表TR6871 (Advantest) 或者相类似的工具测试直流电阻。

(3) 允许最大直流电的范围是以下两者中比较小的一个：引起电感值从最初值降低30%，或者线圈温度升高40°C。(参考周围环境温度20°C)。

\* Agilent Technologies