

DH0035/DH0035C PIN Diode Driver

General Description

The DH0035/DH0035C is a high speed digital driver designed to drive PIN diodes in RF modulators and switches. The device is used in conjunction with an input buffer such as the DM7830/DM8830 or DM5440/DM7440.

Features

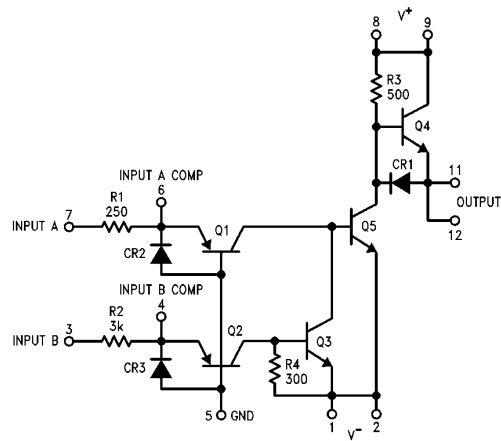
- Large output voltage swing—30V
- Peak output current in excess of 1A
- Inputs TTL/DTL compatible

- Short propagation delay—10 ns
- High repetition rate—5 MHz

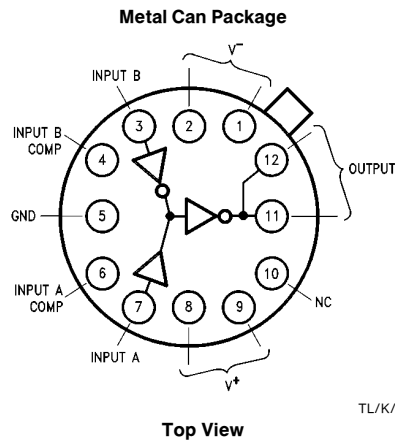
The DH0035/DH0035C is capable of driving a variety of PIN diode types including parallel, serial, anode grounded and cathode grounded. For additional information, see *AN-49 PIN Diode Drivers*.

The DH0035 is guaranteed over the temperature range -55°C to $+125^{\circ}\text{C}$ whereas the DH0035C is guaranteed from 0°C to $+85^{\circ}\text{C}$.

Schematic and Connection Diagrams



TL/K/10124-1



TL/K/10124-2

Order Number DH0035G-MIL or DH0035CG
See NS Package Number G12B

Absolute Maximum Ratings

If Military/Aerospace specified devices are required, please contact the National Semiconductor Sales Office/Distributors for availability and specifications.

V^- Supply Voltage Differential (Pin 5 to Pin 1 or 2)	40V
V^+ Supply Voltage Differential (Pin 1 or 2 to Pin 8 or 9)	30V
Input Current (Pin 3 or 7)	± 75 mA
Peak Output Current	± 1.0 A

Power Dissipation (Note 3)	1.5W
Storage Temperature Range	-65°C to $+150^\circ\text{C}$
Operating Temperature Range	
DH0035	-55°C to $+125^\circ\text{C}$
DH0035C	0°C to $+85^\circ\text{C}$
Lead Temperature (Soldering, 10 sec.)	300°C

Electrical Characteristics (Notes 1 and 2)

Parameter	Conditions	Limits			Units
		Min	Typ	Max	
Input Logic "1" Threshold	$V_{OUT} = -8\text{V}$, $R_L = 100\Omega$		1.0	2.0	V
Input Logic "0" Threshold	$V_{OUT} = +8\text{V}$, $R_L = 100\Omega$	0.4	0.6		V
Positive Output Swing	$I_{OUT} = 100$ mA	7.0	+8.0		V
Negative Output Swing	$I_{OUT} = 100$ mA		-8.0	-7.0	V
Positive Short Circuit Current	$V_{IN} = 0\text{V}$, $R_L = 0\Omega$ (Pulse Test, Duty Cycle $\leq 3\%$)	400	800		mA
Negative Short Circuit Current	$V_{IN} = 1.5\text{V}$, $I_{IN} = 50$ mA, $R_L = 0\Omega$ (Pulse Test, Duty Cycle $\leq 3\%$)	800	1000		mA
Turn-On Delay	$V_{IN} = 1.5\text{V}$, $V_{OUT} = -3\text{V}$		10	15	ns
Turn-Off Delay	$V_{IN} = 1.5\text{V}$, $V_{OUT} = +3\text{V}$		15	30	ns
On Supply Current	$V_{IN} = 1.5\text{V}$		45	60	mA

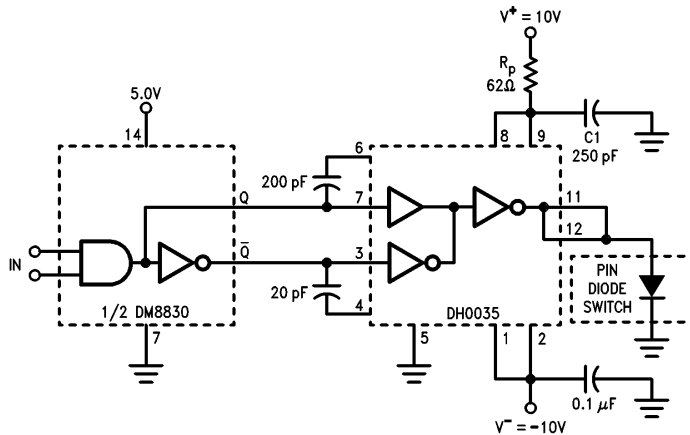
Note 1: Unless otherwise specified, these specifications apply for $V^+ = 10.0\text{V}$, $V^- = -10.0\text{V}$, pin 5 grounded, over the temperature range -55°C to $+125^\circ\text{C}$ for the DH0035, and 0°C to $+85^\circ\text{C}$ for the DH0035C.

Note 2: All typical values are for $T_A = 25^\circ\text{C}$.

Note 3: Derate linearly at 10 mW/ $^\circ\text{C}$ for ambient temperatures above 25°C .

Typical Applications

Grounded Cathode Design

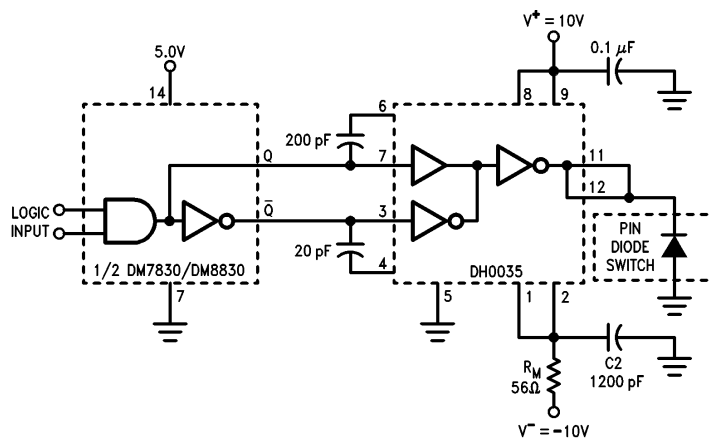


TL/K/10124-3

Note: Cathode grounded PIN diode: $R_p = 62\Omega$ limits diode forward current to 100 mA. Typical switching for HP33604A, RF turn-on 25 ns, turn-off 5 ns. $C_2 = 250$ pF, $R_p = 0\Omega$, $C_1 = 0.1\text{F}$.

Typical Applications (Continued)

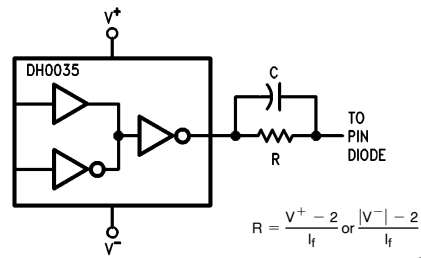
Grounded Anode Design



TL/K/10124-4

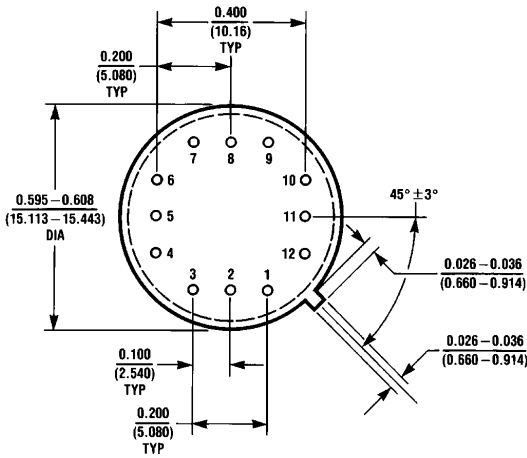
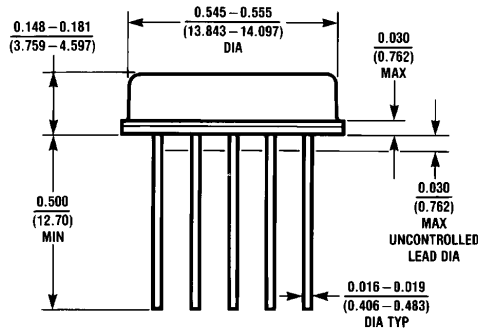
Note: Anode Grounded PIN diode: $R_M = 56\Omega$ limits diode forward current to 100 mA. Typical switching for HP33622A, RF turn-on 5 ns; turn-off 4 ns. $C_1 = 470$ pF, $C_2 = 0.1$ μ F, $R_M = 0\Omega$.

Alternate Current Limiting



TL/K/10124-5

Physical Dimensions inches (millimeters)



G12B (REV C)

12 Lead Metal Can Package
Order Number DH0035G-MIL or DH0035CG
NS Package Number G12B

LIFE SUPPORT POLICY

NATIONAL'S PRODUCTS ARE NOT AUTHORIZED FOR USE AS CRITICAL COMPONENTS IN LIFE SUPPORT DEVICES OR SYSTEMS WITHOUT THE EXPRESS WRITTEN APPROVAL OF THE PRESIDENT OF NATIONAL SEMICONDUCTOR CORPORATION. As used herein:

1. Life support devices or systems are devices or systems which, (a) are intended for surgical implant into the body, or (b) support or sustain life, and whose failure to perform, when properly used in accordance with instructions for use provided in the labeling, can be reasonably expected to result in a significant injury to the user.
2. A critical component is any component of a life support device or system whose failure to perform can be reasonably expected to cause the failure of the life support device or system, or to affect its safety or effectiveness.



National Semiconductor Corporation
 1111 West Bardin Road
 Arlington, TX 76017
 Tel: 1(800) 272-9959
 Fax: 1(800) 737-7018

National Semiconductor Europe
 Fax: (+49) 0-180-530 85 86
 Email: cnjwge@tevm2.nsc.com
 Deutsch Tel: (+49) 0-180-530 85 85
 English Tel: (+49) 0-180-532 78 32
 Français Tel: (+49) 0-180-532 93 58
 Italiano Tel: (+49) 0-180-534 16 80

National Semiconductor Hong Kong Ltd.
 13th Floor, Straight Block,
 Ocean Centre, 5 Canton Rd.
 Tsimshatsui, Kowloon
 Hong Kong
 Tel: (852) 2737-1600
 Fax: (852) 2736-9960

National Semiconductor Japan Ltd.
 Tel: 81-043-299-2309
 Fax: 81-043-299-2408

National does not assume any responsibility for use of any circuitry described, no circuit patent licenses are implied and National reserves the right at any time without notice to change said circuitry and specifications.