

DI100/150 THRU DI1010/1510

DUAL-IN-LINE GLASS PASSIVATED SINGLE-PHASE BRIDGE RECTIFIER

VOLTAGE - 50 to 1000 Volts CURRENT - 1.0~1.5 Amperes

DIP

FEATURES

- Plastic material used carries Underwriters Laboratory recognition 94V-O
- Low leakage
- Surge overload rating— 30~50 amperes peak
- Ideal for printed circuit board
- Exceeds environmental standards of MIL-S-19500/228

MECHANICAL DATA

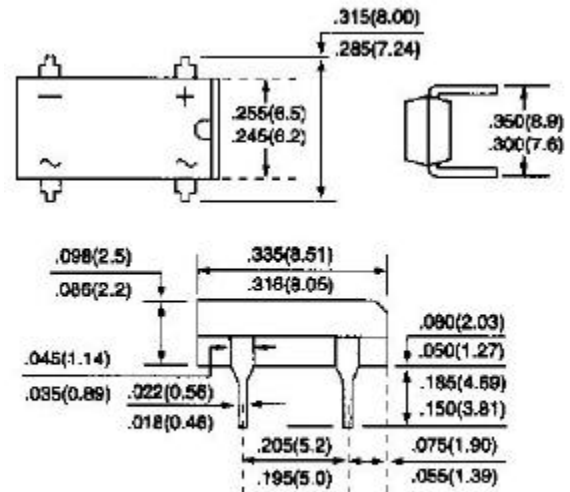
Case: Reliable low cost construction utilizing molded plastic technique results in inexpensive product

Terminals: Lead solderable per MIL-STD-202, Method 208

Polarity: Polarity symbols molded or marking on body

Mounting Position: Any

Weight: 0.02 ounce, 0.4 gram



MAXIMUM RATINGS AND ELECTRICAL CHARACTERISTICS

Ratings at 25 ambient temperature unless otherwise specified.

Single phase, half wave, 60Hz, Resistive or inductive load.

For capacitive load, derate current by 20%.

	DI100 DI150	DI101 DI151	DI102 DI152	DI104 DI154	DI106 DI156	DI108 DI158	DI1010 DI1510	UNITS	
Maximum Recurrent Peak Reverse Voltage	50	100	200	400	600	800	1000	V	
Maximum RMS Bridge input Voltage	35	70	140	280	420	560	700	V	
Maximum DC Blocking Voltage	50	100	200	400	600	800	1000	V	
Maximum Average Forward Current $T_A=40$	DI100	1.0							A
	DI150	1.5							
Peak Forward Surge Current, 8.3ms single half sine-wave superimposed on rated load	DI100	30.0							A
	DI150	50.0							
I^2t Rating for fusing ($t < 8.35$ ms)						10.0		A^2t	
Maximum Forward Voltage Drop per Bridge Element at 1.0A						1.1		V	
Maximum Reverse Current at Rated $T_J=25$						5.0		A	
DC Blocking Voltage per element $T_J=125$						0.5		mA	
Typical Junction capacitance per leg (Note 1) C_J						25.0		pF	
Typical Thermal resistance per leg (Note 2) R_{JA}						40.0		/W	
Typical Thermal resistance per leg (Note 2) R_{JL}						15.0			
Operating Temperature Range T_J						-55 to +125			
Storage Temperature Range T_A						-55 to +150			

NOTES:

1. Measured at 1.0 MHz and applied reverse voltage of 4.0 Volts
2. Thermal resistance from junction to ambient and from junction to lead mounted on P.C.B. with 0.5×0.5" (13×13mm) copper pads

RATING AND CHARACTERISTIC CURVES

DI100/150 THRU DI1010/1510

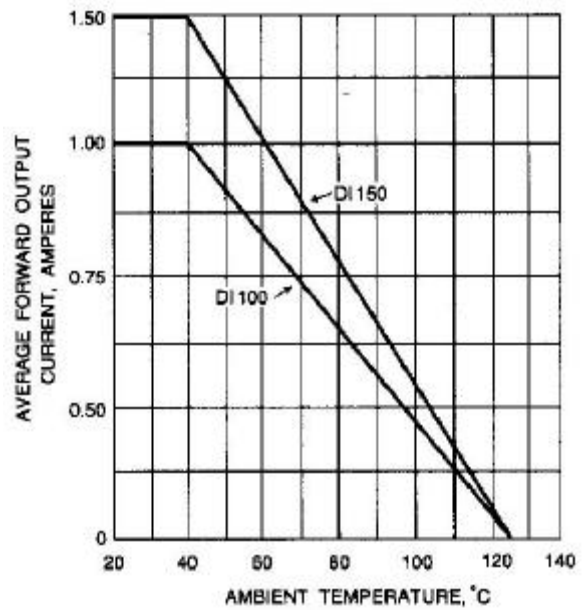
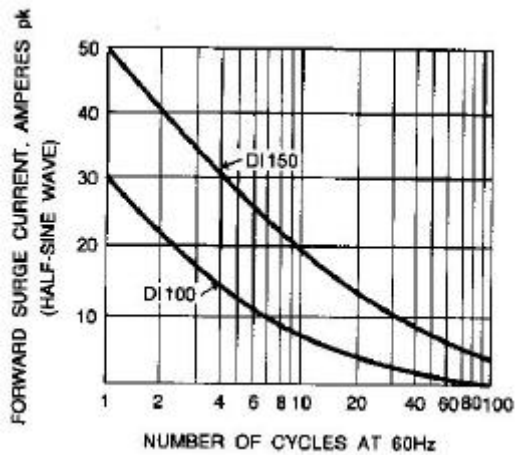


Fig. 1-MAXIMUM NON-REPETITIVE SURGE CURRENT Fig. 2-DERATING CURVE FOR OUTPUT RECTIFIED CURRENT

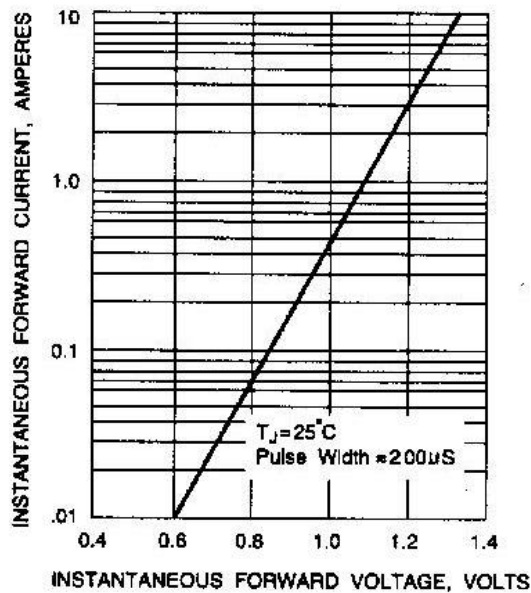


Fig. 3-TYPICAL FORWARD CHARACTERISTICS

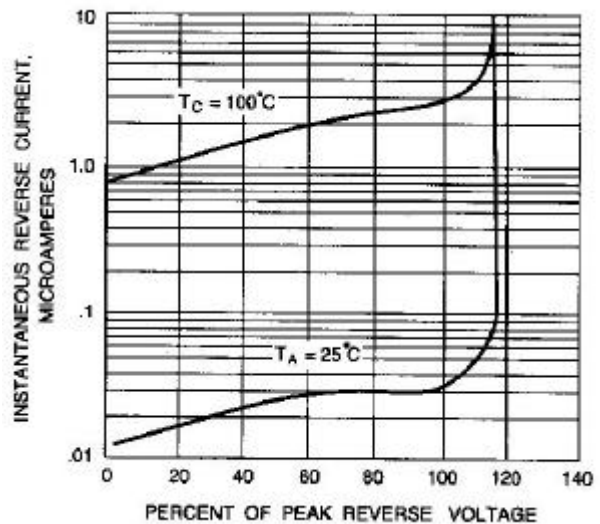


Fig. 4-TYPICAL REVERSE CHARACTERISTICS