



# New Products

New Products

## DM7833/DM8833, DM7834/DM8834, DM7835/DM8835, DM7839/DM8839 quad TRI-STATE® transceivers

### general description

This family of TRI-STATE® party line transceivers offer extreme versatility in bus organized data transmission systems. The data bus may be unterminated, or terminated DC or AC at one or both ends. Drivers in the third (high impedance) state load the data bus with a negligible leakage current. The receiver input current is low allowing at least 100 driver/receiver pairs to utilize a single bus. The bus loading is unchanged when  $V_{CC} = 0V$ . The receiver incorporates hysteresis to provide greater noise immunity. All devices utilize a high current TRI-STATE output driver. The DM7833/DM8833 and DM7835/DM8835 employ TRI-STATE outputs on the receiver also, while on the DM7834/DM8834 and DM7839/DM8839 the receiver outputs are standard active pull up T<sup>2</sup>L.

The DM7833/DM8833 are non-inverting quad transceivers with a common driver disable control and a common receiver disable control.

The DM7839/DM8839 are non-inverting quad transceivers with a common two-input driver disable control.

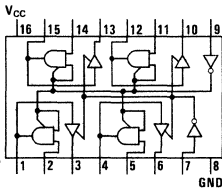
The DM7834/DM8834 are inverting quad transceivers with a common two input driver disable control.

The DM7835/DM8835 are inverting quad transceivers with a common driver disable control and a common receiver disable control.

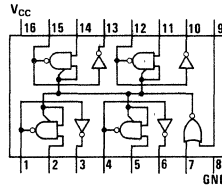
### features

- Receiver hysteresis 450 mV (typ)
- Receiver noise immunity 1.4V (typ)
- Receiver input current 50  $\mu A$  (max) for normal  $V_{CC}$  or  $V_{CC} = 0V$
- Receivers
  - Sink 16 mA at 0.4V (max)
  - Source 2.0 mA (mil) at 2.4V (min)
  - 5.2 mA (com)
- Drivers
  - Sink 50 mA at 0.5V (max) or 32 mA at 0.4V (max)
  - Source 10.4 mA at 2.4V (min)
- Drivers have TRI-STATE outputs
- DM7833/DM8833 and DM7835/DM8835 receivers have TRI-STATE outputs
- Capable of driving 100 $\Omega$  DC terminated buses
- 74 series TTL compatible

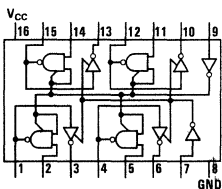
### connection diagrams



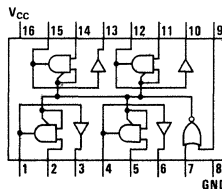
TOP VIEW  
DM7833/DM8833



TOP VIEW  
DM7834/DM8834



TOP VIEW  
DM7835/DM8835



TOP VIEW  
DM7839/DM8839

9