

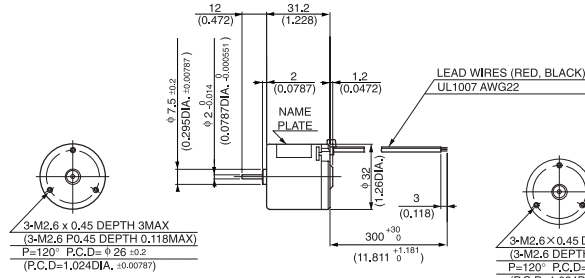
DME33

MODEL CODE	VOLTAGE	OUTPUT	CURRENT
SA	12V	0.7W	0.12A
SB	24V	0.7W	0.06A
BA	12V	3.0W	0.42A
BB	24V	3.0W	0.22A

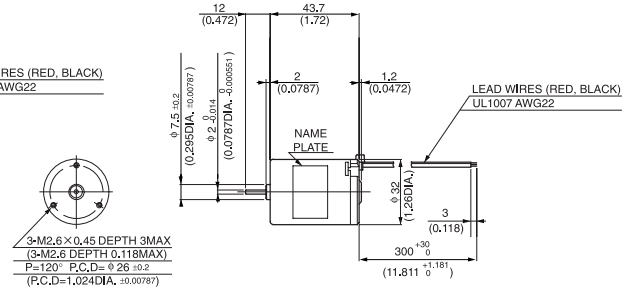


● DIMENSIONS Unit mm(inch)

DME33SA, DME33SB

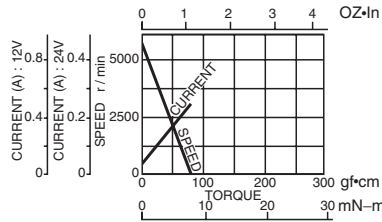


DME33BA, DME33BB

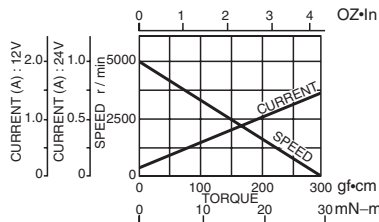


● CURRENT, SPEED-TORQUE CURVE

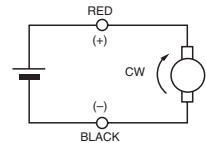
DME33SA, DME33SB



DME33BA, DME33BB



● CONNECTION

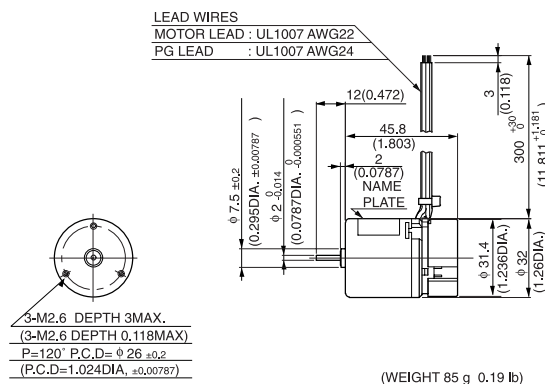


● STANDARD SPECIFICATIONS

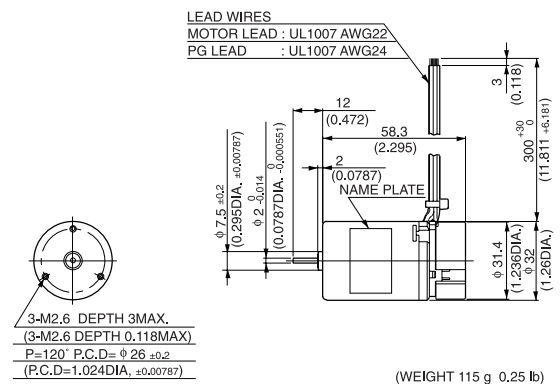
Model	Rated					No load		Stall torque		Weight		
	Output W	Voltage V	Torque		Current A	Speed r/min	Current A	Speed r/min	mN-m	oz-in	Weight	
			mN-m	oz-in							g	lb
DME33SA	0.7	12	1.5	0.21	0.12	4500	0.05	5500	7.8	1.11	70	0.15
DME33SB	0.7	24	1.5	0.21	0.06	4500	0.02	5500	7.8	1.11	70	0.15
DME33BA	3	12	7.8	1.11	0.42	3700	0.06	5000	29	4.17	100	0.22
DME33BB	3	24	7.8	1.11	0.22	3700	0.04	5000	29	4.17	100	0.22

● REVOLUTION SENSOR MAGNET TYPE

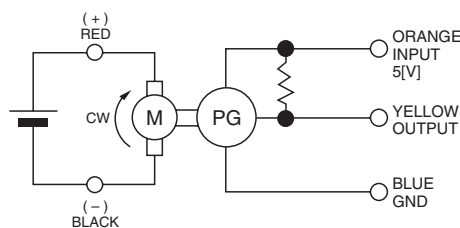
DME33SMA, DME33SMB



DME33BMA, DME33BMB



● CONNECTION OF REVOLUTION SENSOR



● SPECIFICATION OF REVOLUTION SENSOR SHOWN ON PAGE 8.

DME33

MODEL CODE	VOLTAGE	OUTPUT	CURRENT
SA	12V	0.7W	0.12A
SB	24V	0.7W	0.06A
BA	12V	3.0W	0.42A
BB	24V	3.0W	0.22A

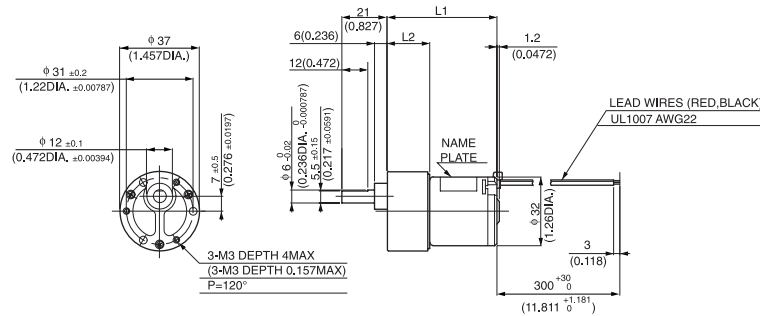
WITH GEARBOX
36G

Gear heads for
intermittent drive



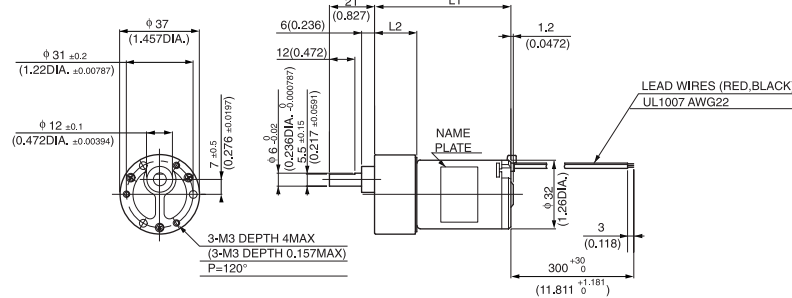
36G

● DIMENSIONS Unit mm(inch)
DME33S36G



GEAR RATIO	L1		L2		WEIGHT	
	(mm)	(inch)	(mm)	(inch)	g	lb
10	51.0	2.008	19.8	0.78	170	0.37
18~30	53.5	2.106	22.3	0.878		
50~100	56.0	2.204	24.8	0.976		
120~300	58.5	2.303	27.3	1.075	190	0.42
400~600	61.0	2.402	29.8	1.173		

DME33B36G



GEAR RATIO	L1		L2		WEIGHT	
	(mm)	(inch)	(mm)	(inch)	g	lb
10	63.5	2.5	19.8	0.78	200	0.44
18~30	66.0	2.598	22.3	0.878		
50~100	68.5	2.697	24.8	0.976		
120~300	71.0	2.795	27.3	1.075	220	0.49
400~600	73.5	2.894	29.8	1.173		

● with 36G TYPE GEARBOX

Model	Gear ratio		10	*18	*20	*30	50	60	75	100	*120	*150	*180
	Rated speed	r/min	450	250	225	150	90	75	60	45	37.5	30	25
DME33S36G □ ☆	Rated torque	N·m	0.011	0.018	0.021	0.032	0.048	0.058	0.072	0.096	0.098	0.12	0.15
		oz·in	1.67	2.64	3.06	4.58	6.80	8.19	10.28	13.61	13.89	18.05	22.22
DME33B36G □ ☆	Rated speed	r/min	370	205	185	123	74	61.6	49.3	40	34	28.4	24.4
		Rated torque	N·m	0.063	0.1	0.11	0.16	0.25	0.3	0.38	0.39	0.39	0.39
		oz·in	9.03	13.89	15.28	23.61	36.11	43.05	54.16	55.55	55.55	55.55	55.55
Model	Gear ratio		*200	*250	*300	400	500	600					
	Rated speed	r/min	22.5	18	15	11.2	9	7.7					
DME33S36G □ ☆	Rated torque	N·m	0.16	0.21	0.25	0.31	0.39	0.39					
		oz·in	23.61	30.55	36.11	44.44	55.55	55.55					
DME33B36G □ ☆	Rated speed	r/min	22.2	18.2	15.4	11.7	9.5	8					
		Rated torque	N·m	0.39	0.39	0.39	0.39	0.39	0.39				
		oz·in	55.55	55.55	55.55	55.55	55.55	55.55					

NOTE 1: Enter the required reduction ratio in the □.
2: *Rotation of gearbox shaft is in reverse of rotation of motor.
3: Enter the required voltage A or B in the ☆.

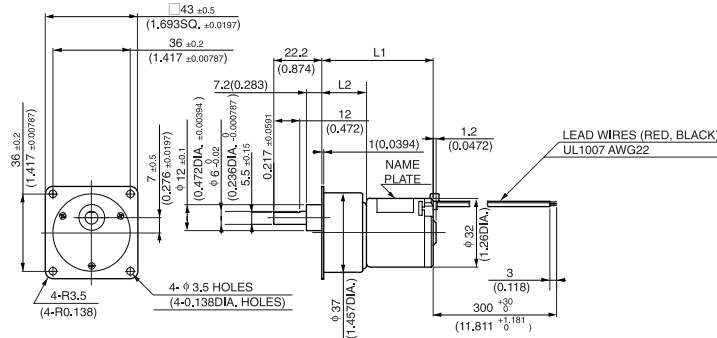
WITH GEARBOX
43G

Gear heads for
intermittent drive



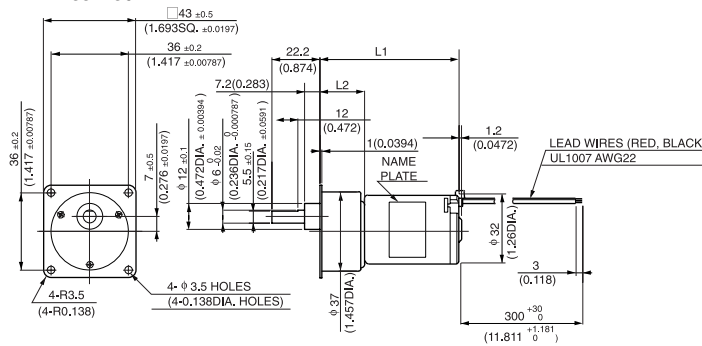
43G

● DIMENSIONS Unit mm(inch)
DME33S43G



GEAR RATIO	L1		L2		WEIGHT	
	(mm)	(inch)	(mm)	(inch)	g	lb
10	49.5	1.949	18.3	0.720	200	0.44
18-30	52	2.047	20.8	0.819		
50-100	54.5	2.146	23.3	0.917		
120-300	57	2.244	25.8	1.016		
400-600	59.5	2.343	28.3	1.114		

DME33B43G



GEAR RATIO	L1		L2		WEIGHT	
	(mm)	(inch)	(mm)	(inch)	g	lb
10	62	2.441	18.3	0.720	220	0.49
18-30	64.5	2.539	20.8	0.819		
50-100	67	2.638	23.3	0.917		
120-300	69.5	2.736	25.8	1.016		
400-600	72	2.835	28.3	1.114		

● with 43G TYPE GEARBOX

Model	Gear ratio		10	*18	*20	*30	50	60	75	100	*120	*150
		Rated speed	r/min	450	250	225	150	90	75	60	45	37.5
DME33S43G □ ☆	Rated torque	N·m	0.011	0.018	0.021	0.032	0.048	0.058	0.072	0.096	0.098	0.12
		oz·in	1.67	2.64	3.06	4.58	6.80	8.19	10.28	13.61	13.89	18.05
DME33B43G □ ☆	Rated speed	r/min	370	205	185	123	74	61.6	49.3	40	34	28.4
	Rated torque	N·m	0.064	0.1	0.11	0.16	0.25	0.3	0.38	0.39	0.39	0.39
		oz·in	9.03	13.89	15.28	23.61	36.11	43.05	54.16	55.55	55.55	55.55

Model	Gear ratio		*180	*200	*250	*300	400	500	600
		Rated speed	r/min	25	22.5	18	15	11.2	9
DME33S43G □ ☆	Rated torque	N·m	0.15	0.16	0.21	0.25	0.31	0.39	0.39
		oz·in	22.22	23.61	30.55	36.11	44.44	55.55	55.55
DME33B43G □ ☆	Rated speed	r/min	24.4	22.2	18.2	15.4	11.7	9.5	8
	Rated torque	N·m	0.39	0.39	0.39	0.39	0.39	0.39	0.39
		oz·in	55.55	55.55	55.55	55.55	55.55	55.55	55.55

NOTE 1: Enter the required reduction ratio in the □.
2: *Rotation of gearbox shaft is in reverse of rotation of motor.
3: Enter the required voltage A or B in the ☆.

DME33

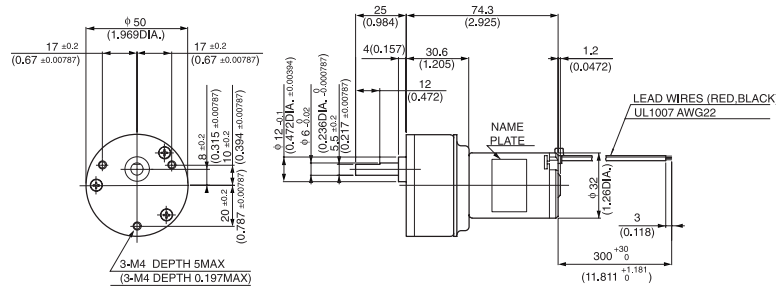
MODEL CODE	VOLTAGE	OUTPUT	CURRENT
SA	12V	0.7W	0.12A
SB	24V	0.7W	0.06A
BA	12V	3.0W	0.42A
BB	24V	3.0W	0.22A

WITH GEARBOX 50G



50G

● DIMENSIONS Unit mm(inch) DME33B50G



(WEIGHT 300g 0.66 lb)

● with 50G TYPE GEARBOX

Model	Gear ratio		9	18	*27	*36	*54	*72	96	144	192	256
	Rated speed	r/min	411	205	137	102	68.5	51.3	38.5	25.7	19.3	15.7
DME33B50G □ ☆	Rated torque	N-m	0.057	0.11	0.15	0.21	0.3	0.41	0.49	0.74	0.98	0.98
		oz-in	8.05	15.28	20.83	29.16	43.05	58.33	69.44	104.15	138.87	138.87

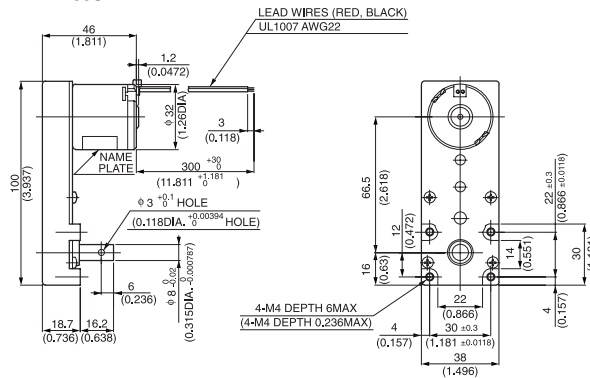
WITH GEARBOX L

Gear heads for
intermittent drive



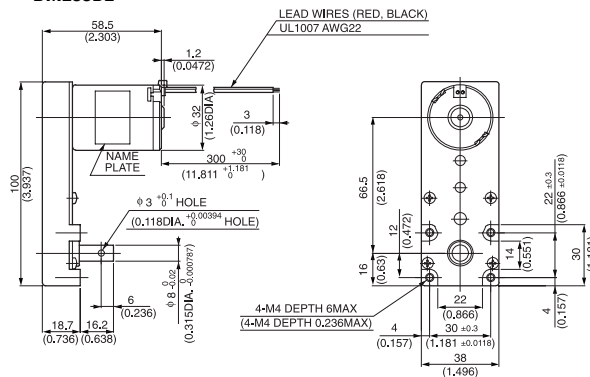
L

● DIMENSIONS Unit mm(inch) DME33SL



(WEIGHT 240 g 0.53 lb)

DME33BL



(WEIGHT 270 g 0.6 lb)

● with L TYPE GEARBOX

Model	Gear ratio		30	50	120	150	200	255
	Rated speed	r/min	150	90	37.5	30	22.5	17.6
DME33SL □ ☆	Rated torque	N-m	0.025	0.043	0.098	0.13	0.17	0.22
		oz-in	3.61	6.11	13.89	18.05	23.61	30.55
DME33BL □ ☆	Rated speed	r/min	139	83.7	34.9	27.9	20.9	16.4
		N-m	0.086	0.14	0.34	0.43	0.58	0.74
		oz-in	12.22	19.44	48.61	61.10	81.93	104.15

NOTE 1: Enter the required reduction ratio in the □.
2: *Rotation of gearbox shaft is in reverse of rotation of motor.
3: Enter the required voltage A or B in the ☆.

WITH GEARBOX

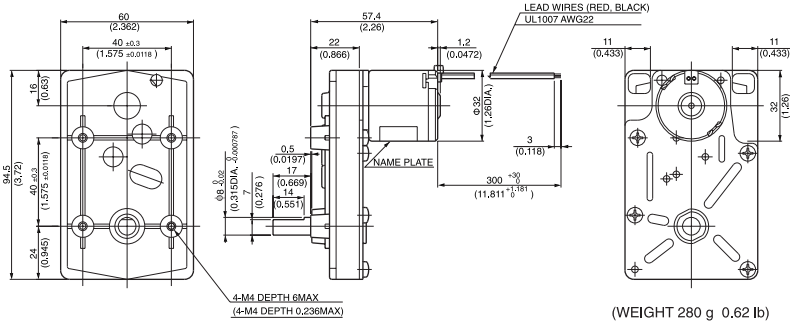
5C

Gear heads for intermittent drive



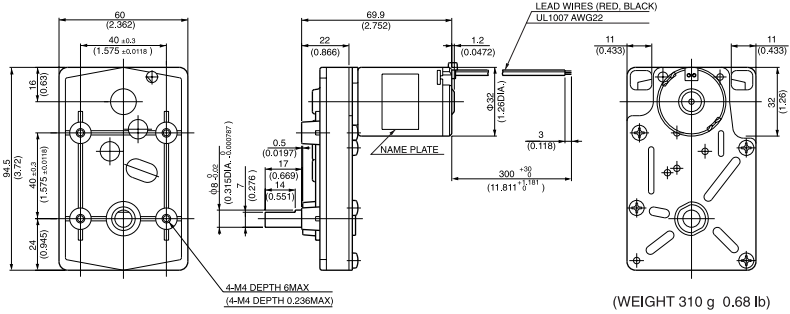
5C

● DIMENSIONS Unit mm(inch)
DME33S5C



(WEIGHT 280 g 0.62 lb)

DME33B5C



(WEIGHT 310 g 0.68 lb)

● with 5C TYPE GEARBOX

Model	Gear ratio		*20	*30	*40	*50	*60	*80	*100	*150	200	250
		Rated speed	r/min	225	150	112	90	75	56.2	45	30	22.5
DME33S5C □ ☆	Rated torque	N·m	0.022	0.032	0.043	0.053	0.064	0.085	0.11	0.16	0.19	0.24
		oz·in	3.06	4.58	6.11	7.50	9.03	12.08	15.28	22.22	26.39	33.33
DME33B5C □ ☆	Rated speed	r/min	185	123	92.5	74	61.6	46.2	37	24.6	18.8	16
		N·m	0.11	0.17	0.23	0.28	0.34	0.46	0.57	0.85	0.98	0.98
	Rated torque	oz·in	15.28	23.61	31.94	40.27	48.61	63.88	80.55	120.82	138.87	138.87
Model	Gear ratio		300	400	500							
	Rated speed	r/min	15	11.2	9							
DME33S5C □ ☆	Rated torque	N·m	0.28	0.38	0.48							
		oz·in	40.27	54.16	68.05							
DME33B5C □ ☆	Rated speed	r/min	13.9	10.9	9							
		N·m	0.98	0.98	0.98							
	Rated torque	oz·in	138.87	138.87	138.87							

NOTE 1: Enter the required reduction ratio in the □.
2: *Rotation of gearbox shaft is in reverse of rotation of motor.
3: Enter the required voltage A or B in the ☆.

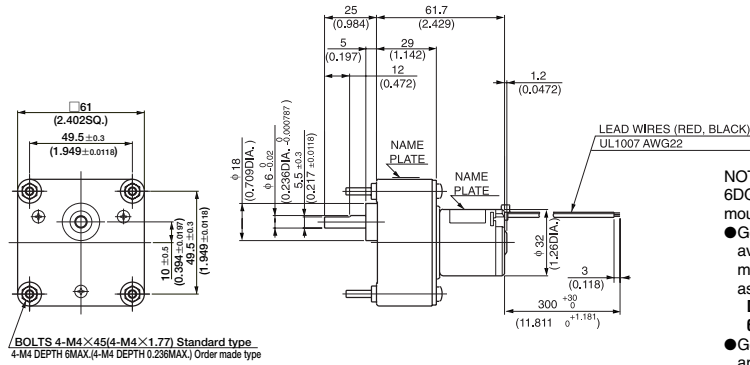
DME33

WITH GEARBOX 6DG



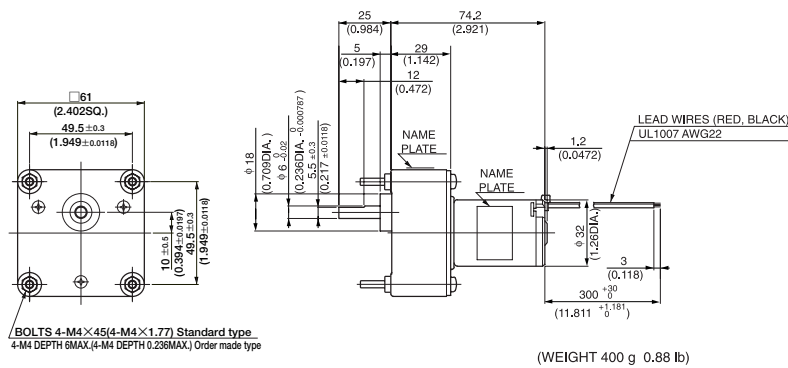
6DG

● DIMENSIONS Unit mm(inch) DME33S6DG



(WEIGHT 370 g 0.82 lb)

DME33B6DG



(WEIGHT 400 g 0.88 lb)

● with 6DG TYPE GEARBOX MOTOR MODEL DME33S6HP☆ or DME33B6HP☆ & GEARBOX MODEL 6DG□

Model	Gear ratio		5	12.5	15	*25	*30	*50	*75	*100	150	180	250
	Rated speed	r/min	900	360	300	180	150	90	60	45	30	25	18
DME33S6HP☆ & 6DG□	Rated torque	N-m	0.006	0.015	0.018	0.026	0.032	0.053	0.08	0.11	0.14	0.17	0.24
		oz-in	0.83	2.08	2.50	3.75	4.58	7.50	11.39	15.28	19.44	23.61	33.33
DME33B6HP☆ & 6DG□	Rated speed	r/min	740	296	246	148	123	74	49.3	37	24.6	20.5	16
		N-m	0.031	0.079	0.095	0.14	0.17	0.28	0.42	0.57	0.77	0.92	0.98
DME33B6HP☆ & 6DG□	Rated torque	oz-in	4.44	11.25	13.47	19.44	23.61	40.27	59.71	80.55	108.32	130.54	138.87
		N-m	0.98	0.98	0.98	0.98	0.98	0.98	0.98	0.98	0.98	0.98	0.98

Model	Gear ratio		300	450	*500	*750	*900	*1800
	Rated speed	r/min	15	10	9	6	5	2.4
DME33S6HP☆ & 6DG□	Rated torque	N-m	0.28	0.43	0.43	0.65	0.77	0.98
		oz-in	40.27	61.10	61.10	91.66	109.71	138.87
DME33B6HP☆ & 6DG□	Rated speed	r/min	13.9	9.9	8.9	6.1	5.2	2.7
		N-m	0.98	0.98	0.98	0.98	0.98	0.98
DME33B6HP☆ & 6DG□	Rated torque	oz-in	138.87	138.87	138.87	138.87	138.87	138.87

NOTE
1: Enter the required reduction ratio in the □.
2: *Rotation of gearbox shaft is in reverse of rotation of motor.
3: Enter the required voltage A or B in the ☆.