

DP 2012 Series

Multilayer Chip Diplexers

Features

- ❖ Monolithic structure including one low-pass and one high-pass filters with loss pole at adjacent passband.

Applications

- ❖ Dual-band / dual-mode 2.4GHz/5GHz WLAN



Specifications

Part Number	Passband (MHz)	Attenuation @ Low Band (dB)	Attenuation @ High Band (dB)	Passband VSWR	Q'ty/ Reel (pcs)
DP2012-B2455CA_	2400-2500	0.70 max.	15 min.	2.0 max.	4,000
	4900-5875	20 min.	0.9 max.	2.0 max.	

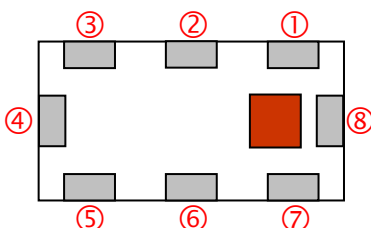
Operating Temperature Range : -40 ~ +85 °C
 Storage Temperature Range : +5 ~ +35 °C, Humidity 45~75%RH
 Storage Period : 12 months max.
 Power Capacity : 2W max.

Part Number

DP **2012** - **B** **2455** **CA** **□**
 ① ② ③ ④ ⑤ ⑥

① Type	DP : Diplexer	② Dimensions (L × W)	2.0 × 1.2 mm
③ Material Code	B	④ Frequency Range	2455=2400MHz /5500MHz
⑤ Specification Code	CA	⑥ Packaging	T: Tape & Reel B: Bulk

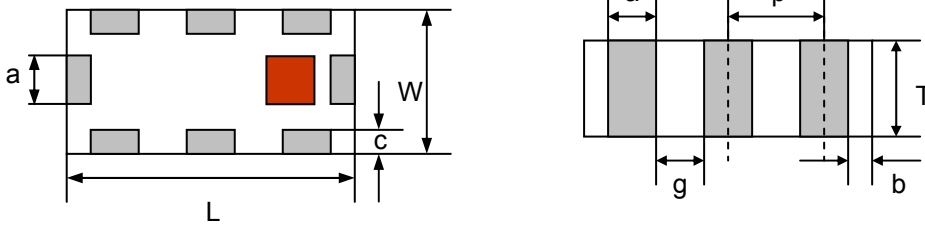
Terminal Configuration



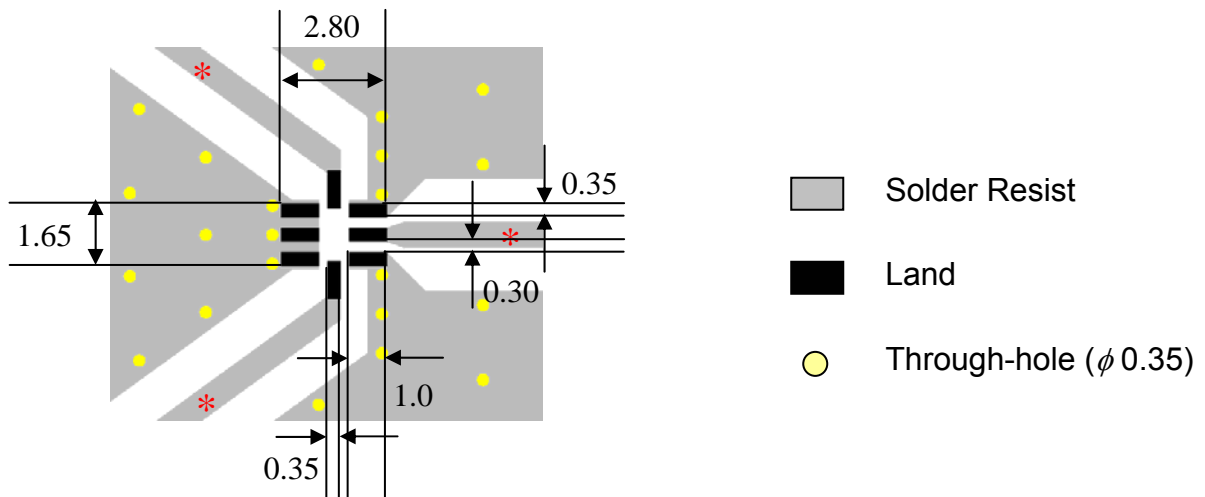
No.	Terminal Name	No.	Terminal Name
①	GND	⑤	GND
②	Common Port (P1)	⑥	GND
③	GND	⑦	GND
④	Lower Freq. Port (P3)	⑧	Higher Freq. Port (P2)

Dimensions and Recommended PC Board Pattern

Unit : mm

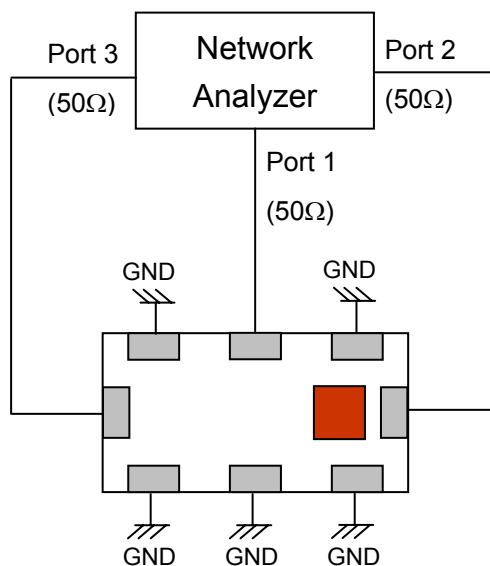


Mark	L	W	T	a	b	c	g	p
Dimensions	2.0 ± 0.1	1.25 ± 0.1	0.95 ± 0.1	0.3 ± 0.1	0.2 ± 0.1	0.3+0.1 /-0.2	0.35 ± 0.1	0.65 ± 0.05



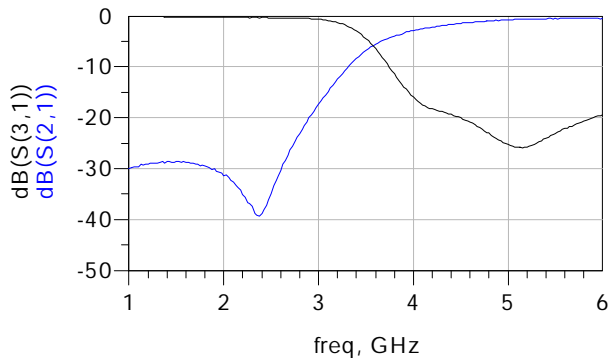
* Line width should be designed to match 50Ω characteristic impedance, depending on PCB material and thickness.

Measuring Diagram

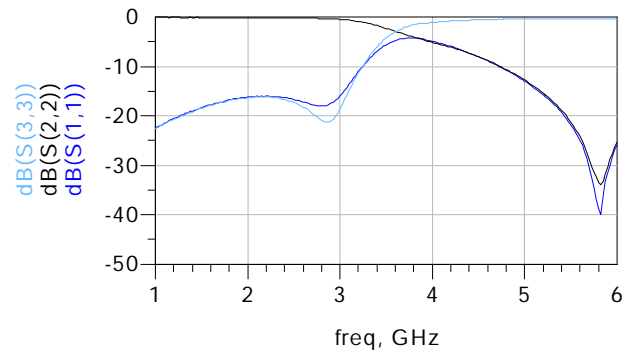


Typical Electrical Characteristics (T=25°C)

Attenuation



Return Loss



Notes

- ❖ The contents of this data sheet are subject to change without notice. Please confirm the specifications and delivery conditions when placing your order.

Advanced Ceramic X Corp.

16 Tzu Chiang Road, Hsinchu Industrial District Hsinchu Hsien 303, Taiwan

TEL:886-3-5987008 FAX:886-3-5987001

E-mail: acx@acxc.com.tw

<http://www.acxc.com.tw>