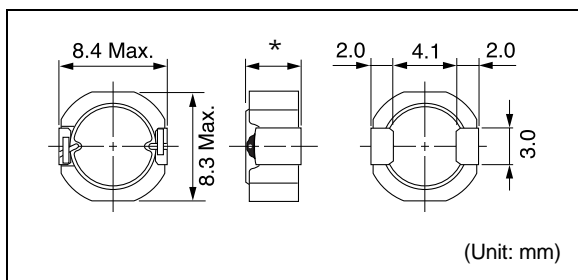


DS84LCB / DS85LCB/ DS86C

Inductance Range: 1.0~100μH(DS84LCB), 1.0~100μH(DS85LCB), 1.3~220μH(DS86C)

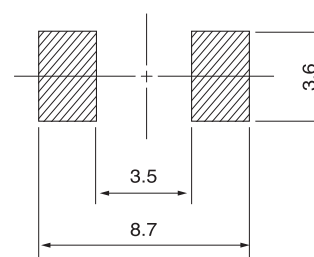
DIMENSIONS / 外形寸法図



Note (*) DS84LCB; 4.0mm Max. height
 DS85LCB; 5.0mm Max. height
 DS86C ; 6.8mm Max. height

Recommended patterns

推奨パターン図



(Unit: mm)

FEATURES / 特長

- 8.4 × 8.3mm Max. square, 4.0, 5.0, and 6.8mm Max. height).
- Magnetically shielded construction and low DC resistance.
- Suitable for large currents.
- RoHS compliant.
- 8.4 × 8.3mm角Max. 高さ4.0, 5.0 および6.8mm Max.)
- 閉磁路構造、低直流抵抗
- 大電流対応
- RoHS指令対応

MEASUREMENT CONDITION / 測定条件

- (1) Inductance is measured with a LCR meter 4284A* or equivalent. Test frequency at 100kHz
- (2) DC Resistance is measured with a Digital Multimeter TR6871 (Advantest) or equivalent.
- (3) Maximum allowable DC current is that which causes a 10% inductance reduction from the initial value, coil temperature to rise by 40°C, whichever is smaller. (Reference ambient temperature 20°C)

* Agilent Technologies

- (1) インダクタンスはLCRメータ4284A*または同等品により測定する。測定周波数は100kHzです。
- (2) 直流抵抗はデジタルマルチメータTR6871(Advantest)または同等品により測定する。
- (3) 最大許容電流は、直流重畳電流を流した時インダクタンスの値が初期値より10%減少する直流電流値、または直流電流により、コイルの温度が40℃上昇の何れか小さい値です。(周囲温度20℃を基準とする。)

*Agilent Technologies

SELECTION GUIDE FOR STANDARD COILS

TYPE DS84LCB (Quantity/reel; 500 PCS)

東光品番	インダクタンス ⁽¹⁾	許容差	直流抵抗 ⁽²⁾	直流重畳許容電流 ⁽³⁾	温度上昇許容電流 ⁽³⁾
TOKO Part Number	Inductance ⁽¹⁾ (μH)	Tolerance (%)	DC Resistance ⁽²⁾ (mΩ) Max. (Typ.)	Inductance Decrease Current ⁽³⁾ (A) Max. (Typ.) $\frac{\Delta L}{L} = 10\%$	Temperature Rise Current ⁽³⁾ ΔT=40°C (A) Max. (Typ.)
B1134AS-1R0N	1.0	±30	11 (8.9)	8.1 (10.8)	8.0 (9.4)
B1134AS-1R5N	1.5	±30	13 (11)	6.6 (8.8)	6.9 (8.1)
B1134AS-2R2N	2.2	±30	17 (15)	5.6 (7.5)	5.4 (6.4)
B1134AS-2R7N	2.7	±30	19 (16)	4.9 (6.5)	5.3 (6.2)
B1134AS-3R9N	3.9	±30	24 (20)	4.3 (5.8)	4.7 (5.5)
B1134AS-4R7N	4.7	±30	30 (25)	3.9 (5.2)	4.0 (4.7)
B1134AS-6R8N	6.8	±30	43 (36)	3.2 (4.3)	3.3 (3.9)
B1134AS-100M	10	±20	57 (47)	2.8 (3.7)	2.7 (3.1)
B1134AS-150M	15	±20	80 (66)	2.2 (3.0)	2.3 (2.7)
B1134AS-220M	22	±20	120 (100)	1.8 (2.4)	1.8 (2.1)
B1134AS-330M	33	±20	170 (140)	1.5 (2.0)	1.4 (1.7)
B1134AS-470M	47	±20	255 (210)	1.2 (1.6)	1.2 (1.4)
B1134AS-680M	68	±20	340 (285)	1.0 (1.3)	1.0 (1.2)
B1134AS-101M	100	±20	460 (385)	0.83 (1.1)	0.93 (1.0)

DS85LCB / DS86C

DS85LCB : 8.4 × 8.3mm Max. square, 5.0mm height, Inductance range: 1.0~100μH

DS86C : 8.4 × 8.3mm Max. square, 6.8mm height, Inductance range: 1.3~220μH

SELECTION GUIDE FOR STANDARD COILS

TYPE DS85LCB (Quantity/reel; 500 PCS)

東光品番	インダクタンス ⁽¹⁾	許容差	直流抵抗 ⁽²⁾	直流重畳許容電流 ⁽³⁾	温度上昇許容電流 ⁽³⁾
TOKO Part Number	Inductance ⁽¹⁾ (μH)	Tolerance (%)	DC Resistance ⁽²⁾ (mΩ) Max. (Typ.)	Inductance Decrease Current ⁽³⁾ (A) Max. $\frac{\Delta L}{L} = 10\%$ (Typ.)	Temperature Rise Current ⁽³⁾ ΔT=40°C (A) Max. (Typ.)
B1135AS-1R0N	1.0	± 30	9.6 (8.0)	7.8 (10.4)	8.5 (10.0)
B1135AS-1R5N	1.5	± 30	11 (9.3)	6.3 (8.4)	7.6 (9.0)
B1135AS-2R2N	2.2	± 30	13 (11)	5.5 (7.3)	7.3 (8.6)
B1135AS-2R7N	2.7	± 30	14 (12)	4.7 (6.3)	6.5 (7.6)
B1135AS-3R6N	3.6	± 30	17 (14)	4.2 (5.6)	5.5 (6.5)
B1135AS-4R7N	4.7	± 30	21 (17)	3.7 (5.0)	5.1 (6.0)
B1135AS-6R8N	6.8	± 30	29 (25)	3.1 (4.1)	4.0 (4.7)
B1135AS-100M	10	± 20	45 (38)	2.4 (3.2)	3.3 (3.8)
B1135AS-150M	15	± 20	64 (53)	2.0 (2.7)	2.5 (2.9)
B1135AS-220M	22	± 20	84 (70)	1.7 (2.3)	2.3 (2.7)
B1135AS-330M	33	± 20	110 (90)	1.4 (1.9)	1.9 (2.3)
B1135AS-470M	47	± 20	150 (125)	1.2 (1.6)	1.6 (1.9)
B1135AS-680M	68	± 20	235 (195)	0.97 (1.3)	1.3 (1.5)
B1135AS-101M	100	± 20	330 (275)	0.79 (1.1)	1.1 (1.3)

TYPE DS86C (Quantity/reel; 500 PCS)

東光品番	インダクタンス ⁽¹⁾	許容差	直流抵抗 ⁽²⁾	直流重畳許容電流 ⁽³⁾	温度上昇許容電流 ⁽³⁾
TOKO Part Number	Inductance ⁽¹⁾ (μH)	Tolerance (%)	DC Resistance ⁽²⁾ (mΩ) Max.	Inductance Decrease Current ⁽³⁾ (A) Max. $\frac{\Delta L}{L} = 10\%$	Temperature Rise Current ⁽³⁾ ΔT=40°C (A) Max.
B992AS-1R3N	1.3	± 30	14	8.3	6.1
B992AS-2R0N	2.0	± 30	15	6.8	6.0
B992AS-2R7N	2.7	± 30	17	5.9	5.5
B992AS-3R3N	3.3	± 30	21	5.2	4.8
B992AS-4R3N	4.3	± 30	22	4.6	4.8
B992AS-5R6N	5.6	± 30	26	4.1	4.3
B992AS-6R8N	6.8	± 30	28	3.8	4.1
B992AS-8R2N	8.2	± 30	30	3.4	3.9
B992AS-100M	10.0	± 20	36	2.9	3.6
B992AS-150M	15.0	± 20	41	2.6	3.3
B992AS-220M	22.0	± 20	74	2.0	2.5
B992AS-330M	33.0	± 20	120	1.6	1.9
B992AS-470M	47.0	± 20	150	1.4	1.7
B992AS-680M	68.0	± 20	210	1.1	1.4
B992AS-101M	100.0	± 20	310	0.98	1.1
B992AS-151M	150.0	± 20	400	0.75	0.94
B992AS-221M	220.0	± 20	560	0.65	0.80