

DS8669 2-Digit BCD to 7-Segment Decoder/Driver

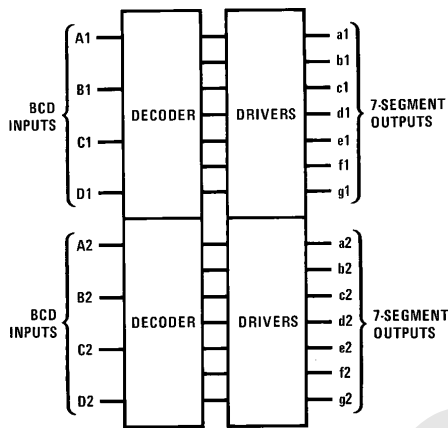
General Description

The DS8669 is a 2-digit BCD to 7-segment decoder/driver for use with common anode LED displays. The DS8669 drives 2 7-segment LED displays without multiplexing. Outputs are open-collector, and capable of sinking 25 mA/segment. Applications include TV and CB channel displays.

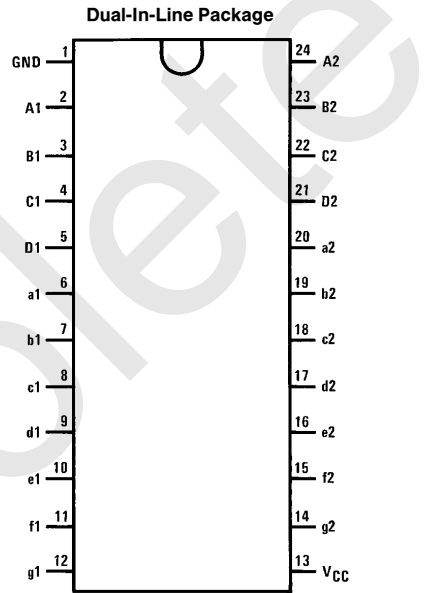
Features

- Direct 7-segment drive
- 25 mA/segment current sink capability
- Low power requirement—16 mA typ
- Very low input currents—2 μ A typ
- Input clamp diodes to both V_{CC} and ground
- No multiplexing oscillator noise

Logic and Connection Diagrams



TL/F/5836-1



TL/F/5836-2

Top View
 Order Number DS8669N
 See NS Package Number N24A

Absolute Maximum Ratings (Note 1)

If Military/Aerospace specified devices are required, please contact the National Semiconductor Sales Office/Distributors for availability and specifications.

Supply Voltage	7V
Input Current	20 mA
Output Voltage	12V
Storage Temperature Range	-65°C to +150°C

Maximum Power Dissipation* at 25°C	2005 mW
Molded Package	
Lead Temperature (Soldering, 10 seconds)	300°C
*Derate molded package 16.04 mW/°C above 25°C.	

Operating Conditions

	Min	Max	Units
Supply Voltage (V_{CC})	4.5	6.0	V
Temperature (T_A)	0	+70	°C

Electrical Characteristics $V_{CC} = 5.25V$, (Note 2)

Symbol	Parameter	Conditions	Min	Typ	Max	Units
V_{IH}	Logical "1" Input Voltage	$V_{CC} = \text{Min}$	2.0		$V_{CC} + 0.6$	V
V_{IL}	Logical "0" Input Voltage	$V_{CC} = \text{Min}$	-0.3		0.8	V
I_O	Logical "1" Output Leakage Current	$V_{CC} = \text{Max}$, $V_{OUT} = 10V$			50	μA
V_{OL}	Logical "0" Output Voltage	$I_{OL} = 25 \text{ mA}$, $V_{CC} = \text{Min}$		0.4	0.8	V
I_{IH}	Logical "1" Input Current	$V_{IN} = V_{CC} = \text{Max}$		2.0	10	μA
I_{IL}	Logical "0" Input Current	$V_{IN} = 0V$, $V_{CC} = \text{Max}$		-0.1	-10	μA
I_{CC}	Supply Current	All Outputs Low, $V_{CC} = \text{Max}$		16	25	mA
V_{IC}	Input Clamp Voltage	$I_{IN} = 10 \text{ mA}$			$V_{CC} + 1.5V$	V
		$I_{IN} = -10 \text{ mA}$			-1.5V	V
t_{pd0}	Propagation Delay to a Logical "0" from Any Input to Any Output	$R_L = 400\Omega$ $C_L = 50 \text{ pF}$ $T_A = 25^\circ C$			10	μs
t_{pd1}	Propagation Delay to a Logical "1" from Any Input to Any Output				10	μs

Note 1: "Absolute Maximum Ratings" are those values beyond which the safety of the device cannot be guaranteed. They are not meant to imply that the devices should be operated at these limits. The table of "Electrical Characteristics" provides conditions for actual device operation.

Note 2: Unless otherwise specified min/max limits apply across the 0°C to +70°C range for the DS8669. All typicals are given for $V_{CC} = 5.25V$ and $T_A = 25^\circ C$.

Note 3: All currents into device pins shown as positive, out of device pins as negative, all voltages referenced to ground unless otherwise noted. All values shown as max or min on absolute value basis.

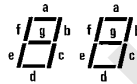
Truth Table

INPUT LEVELS				SEGMENT OUTPUTS														DISPLAY 1	DISPLAY 2								
D _N	C _N	B _N	A _N	a1	b1	c1	d1	e1	f1	g1	a2	b2	c2	d2	e2	f2	g2										
0	0	0	0	0	0	0	0	0	0	1	0	0	0	0	0	0	1	0	0	0	0	0	0	1	0	0	
0	0	0	1	1	0	0	1	1	1	1	1	0	0	1	1	1	1	1	1	1	1	1	1	1	1	1	
0	0	1	0	0	0	0	1	0	0	1	0	0	0	1	0	0	1	0	0	1	0	0	1	0	0	0	
0	0	1	1	0	0	0	0	1	1	0	0	0	0	0	0	1	1	0	0	1	1	0	0	0	0	0	
0	1	0	0	1	1	0	0	1	1	0	0	1	0	0	1	1	0	0	1	1	0	0	0	0	0	0	
0	1	0	1	0	1	0	1	0	0	1	0	0	0	1	0	0	1	0	0	1	0	0	0	0	0	0	
0	1	1	0	0	0	1	0	0	0	0	0	0	0	0	0	0	0	0	0	0	0	0	0	0	0	0	
0	1	1	1	0	0	0	1	1	1	1	0	0	0	1	1	1	0	0	1	1	1	1	1	1	1	1	
1	0	0	0	0	0	0	0	0	0	0	0	0	0	0	0	0	0	0	0	0	0	0	0	0	0	0	
1	0	0	1	0	0	0	0	1	0	0	0	0	0	0	0	1	0	0	0	1	0	0	0	0	0	0	
1	0	1	0	0	0	1	1	0	0	0	1	1	0	0	1	0	0	1	0	0	0	0	0	0	0	0	
1	0	1	1	0	0	0	1	0	0	0	1	0	0	1	0	0	1	0	0	1	0	0	0	0	0	0	
1	1	0	0	0	0	1	1	0	0	0	0	1	1	1	0	0	0	1	1	1	0	0	0	1	0	0	
1	1	0	1	0	1	1	1	0	0	0	0	0	1	1	1	1	0	0	1	1	1	0	0	0	0	0	
1	1	1	0	1	0	1	1	1	1	1	0	1	1	1	1	1	1	1	1	1	1	1	1	1	1	1	
1	1	1	1	1	1	1	1	1	1	1	1	1	1	1	1	1	1	1	1	1	1	1	1	1	1	1	

"0" = Segment ON
 "1" = Segment OFF

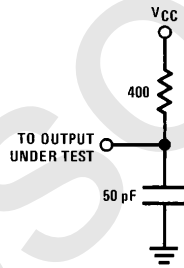
TL/F/5836-3

Display Segment Notation



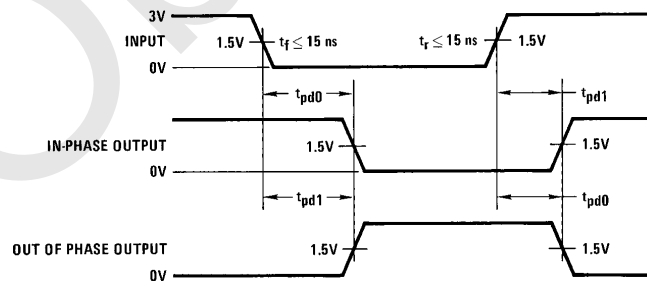
TL/F/5836-4

AC Test Circuit



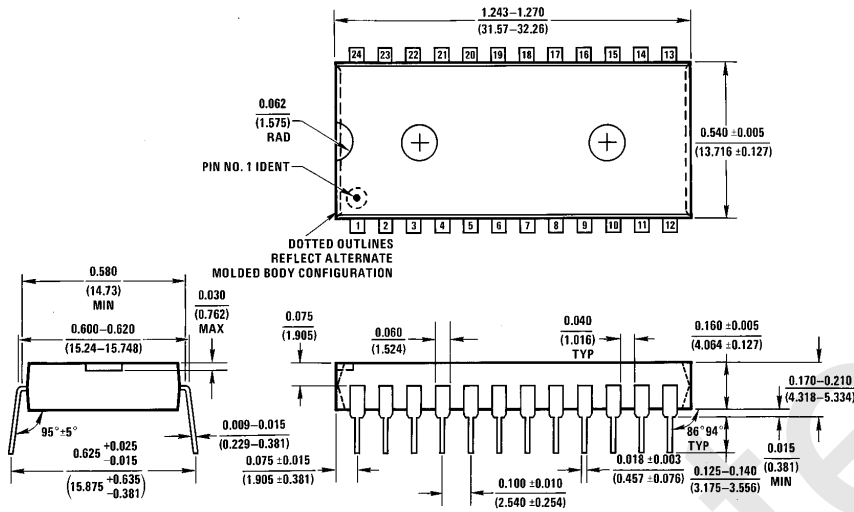
TL/F/5836-5

Switching Time Waveforms



TL/F/5836-6

Physical Dimensions inches (millimeters)



Molded Dual-In-Line Package (N)
Order Number DS8669N
NS Package Number N24A

N24A (REV E)

LIFE SUPPORT POLICY

NATIONAL'S PRODUCTS ARE NOT AUTHORIZED FOR USE AS CRITICAL COMPONENTS IN LIFE SUPPORT DEVICES OR SYSTEMS WITHOUT THE EXPRESS WRITTEN APPROVAL OF THE PRESIDENT OF NATIONAL SEMICONDUCTOR CORPORATION. As used herein:

1. Life support devices or systems are devices or systems which, (a) are intended for surgical implant into the body, or (b) support or sustain life, and whose failure to perform, when properly used in accordance with instructions for use provided in the labeling, can be reasonably expected to result in a significant injury to the user.
2. A critical component is any component of a life support device or system whose failure to perform can be reasonably expected to cause the failure of the life support device or system, or to affect its safety or effectiveness.



National Semiconductor Corporation
 1111 West Bardin Road
 Arlington, TX 76017
 Tel: 1(800) 272-9959
 Fax: 1(800) 737-7018

National Semiconductor Europe
 Fax: (+49) 0-180-530 85 86
 Email: cnjwge@tevm2.nsc.com
 Deutsch Tel: (+49) 0-180-530 85 85
 English Tel: (+49) 0-180-532 78 32
 Français Tel: (+49) 0-180-532 93 58
 Italiano Tel: (+49) 0-180-534 16 80

National Semiconductor Hong Kong Ltd.
 19th Floor, Straight Block,
 Ocean Centre, 5 Canton Rd.
 Tsimshatsui, Kowloon
 Hong Kong
 Tel: (852) 2737-1600
 Fax: (852) 2736-9960

National Semiconductor Japan Ltd.
 Tel: 81-043-299-2309
 Fax: 81-043-299-2408

National does not assume any responsibility for use of any circuitry described, no circuit patent licenses are implied and National reserves the right at any time without notice to change said circuitry and specifications.