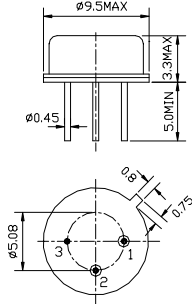


1. Package Dimension Unit: mm



Pin No.	Function
1.	Input
2.	Output
3.	Ground

2. Electronic Characteristics

Electrostatic Sensitive Device (ESD)

Item		Units	Minimum	Typical	Maximum
Center Frequency (fo)		MHz	435.645	435.72	435.795
Insertion Loss		dB	—	1.2	2.0
Quality Factor	Unloaded Q	—	—	13,000	—
	50Ω Loaded Q	—	—	1,900	—
Temperature Stability	Turnover Temperature	—	—	25	—
	Turnover Frequency	KHz	—	fo+2.7	—
	Freq. Temp. Coefficient	ppm/	—	0.032	—
Frequency Aging		ppm/yr	—	<±10	—
DC Insulation Resistance		MΩ	1.0	—	—
RF Equivalent RLC Model	Motional Resistance R ₁	Ω	—	18	25
	Motional Inductance L ₁	μH	—	85.38	—
	Motional Capacitance C ₁	fF	—	1.56	—
	Shunt Static Capacitance C ₀	pF	1.4	1.7	2.0