

MODEL NUMBER DSW36177

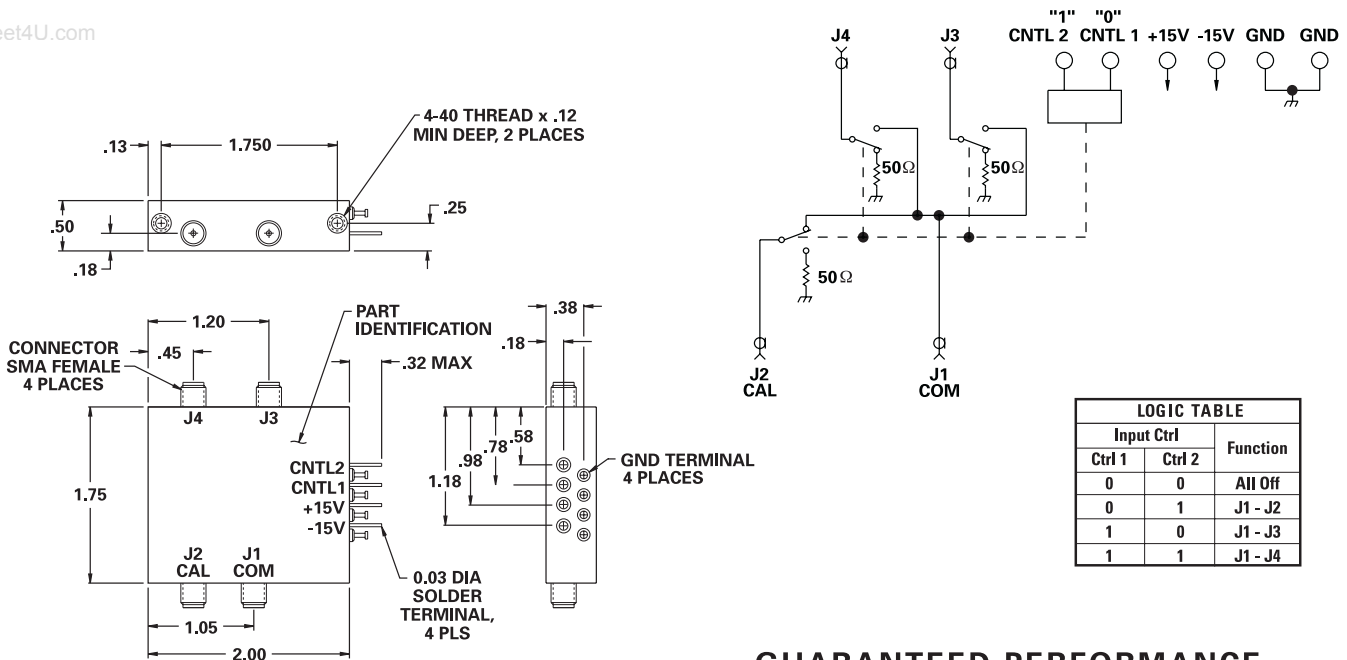
GaAs SP3T

FEATURES

- 2-2500 MHz
- 50 dB Isolation
- +88 dBm 2nd Order Intercept Point
- +47 dBm 3rd Order Intercept Point

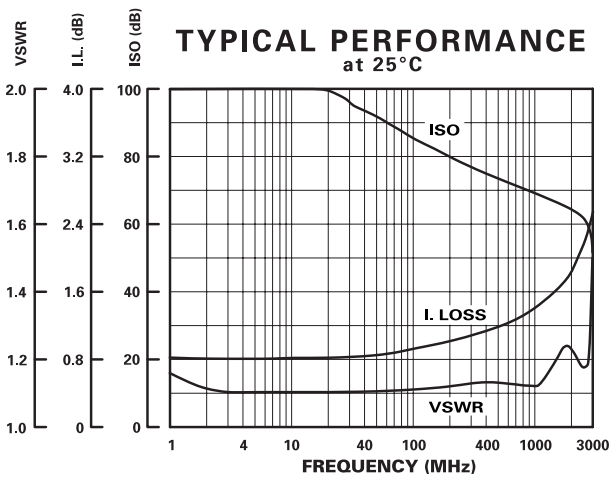
SP3T

www.DataSheet4U.com



| LOGIC TABLE | | |
|-------------|--------|----------|
| Input Ctrl | | Function |
| Ctrl 1 | Ctrl 2 | |
| 0 | 0 | All Off |
| 0 | 1 | J1 - J2 |
| 1 | 0 | J1 - J3 |
| 1 | 1 | J1 - J4 |

GUARANTEED PERFORMANCE



| Parameter | Min | Typ | Max | Units | Conditions |
|---|-------------|--------|-------|-------|---|
| Operating Frequency | 2 | | 2500 | MHz | |
| DC Current | | 11 | 30 | mA | At +15 VDC Supply |
| | | 5 | 30 | mA | At -15 VDC Supply |
| Control Type | | TTL | | | 2 Line, See Logic Chart |
| Control Current | High | ±1.0 | 20 | µA | V _{IH} = +2.7V |
| | Low | ±1.0 | -400 | µA | V _{IL} = +0.5V |
| Isolation | 50 | | | dB | |
| Insertion Loss | | 1.40 | 1.7 | dB | 2 - 1000 MHz |
| | | 2.15 | 3 | dB | 1000 - 2500 MHz |
| Amplitude Balance | | ±0.1 | ±0.3 | dB | Reference between the Calibration Port and any Input Port of the Switch |
| Phase Tracking: Port to Port (Max Differential) | | ±0.5 | 2 | DEG | 2 - 1000 MHz |
| | | ±1.0 | 10 | DEG | 1000 - 2500 MHz |
| VSWR | Thru | 1.25/1 | 1.4/1 | | |
| | Termination | 1.1/1 | 1.5/1 | | |
| Impedance | | 50 | | OHMS | |
| Switching Speed | | 4.7 | 10 | µSEC | 50% TTL to 90% / 10% RF |
| Transition (Rise/Fall) Time | | 1.5 | 10 | µSEC | 10% / 90% or 90% / 10% RF |
| Switching (Video) Transients | | 0.30 | 1.0 | V | Com when switched to all off |
| Intercept Points | 2nd | +60 | +88 | dBm | 1.3 MHz / 2.3 MHz |
| | 3rd | +30 | +47 | dBm | 1.3 MHz / 1.6 MHz |
| RF Power | Operate | | +20 | dBm | 0.1 dB Compression |
| | No Damage | | +30 | dBm | |
| Operating Temperature | -55 | +25 | +85 | °C | TA |