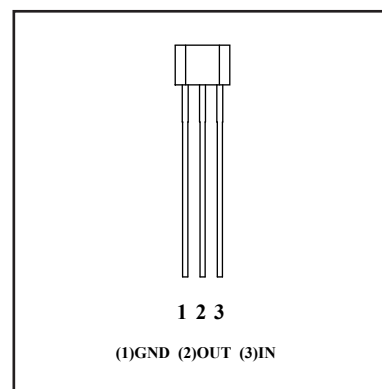


NPN DIGITAL TRANSISTOR

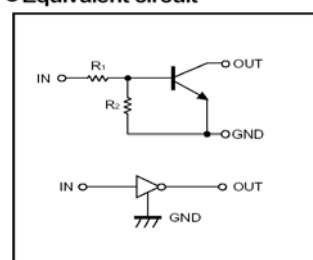
(Pb) Lead(Pb)-Free

Features:

- * Built-in bias resistors enable the configuration of an inverter circuit without connecting external input resistors(see equivalent circuit).
- * The bias resistors consist of thin-film resistors with complete isolation to allow negative biasing of the input.They also have the advantage of almost completely eliminating parasitic effects.
- * Only the on/off conditions need to be set for operation, making device design easy.



●Equivalent circuit



Absolute maximum ratings(Ta=25°C)

Parameter	Symbol	Value	Unit
Supply voltage	V_{CC}	50	V
Input voltage	V_{IN}	-10 ~ 40	V
Output current	I_O	50	mA
	$I_{C(MAX)}$	100	
Power dissipation	P_d	300	mW
Junction temperature	T_j	150	°C
Storage temperature	T_{stg}	-55-150	°C

Electrical characteristics (Ta=25°C)

Parameter	Symbol	Min.	Typ	Max.	Unit	Conditions
Input voltage	$V_{I(off)}$			0.5	V	$V_{CC}=5V, I_O=100 \mu A$
	$V_{I(on)}$	3				$V_O=0.3V, I_O=10 mA$
Output voltage	$V_{O(on)}$		0.1	0.3	V	$I_O/I_I=10mA/0.5mA$
Input current	I_I			0.88	mA	$V_I=5V$
Output current	$I_{O(off)}$			0.5	μA	$V_{CC}=50V, V_I=0$
DC current gain	G_I	30				$V_O=5V, I_O=5mA$
Input resistance	R_1	7	10	13	K Ω	
Resistance ratio	R_2/R_1	0.8	1	1.2		
Transition frequency	f_T		250		MHz	$V_{CE}=10V, I_E=-5mA, f=100MHz$

Electrical characteristic curves

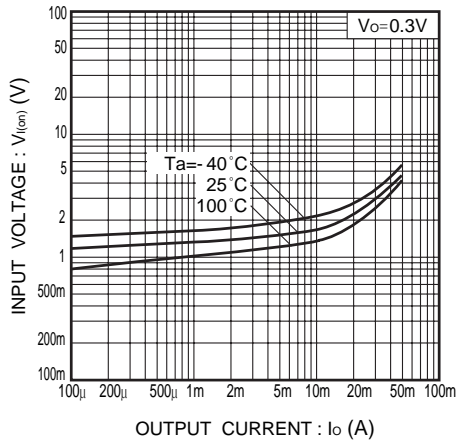


Fig.1 Input voltage vs. output current (ON characteristics)

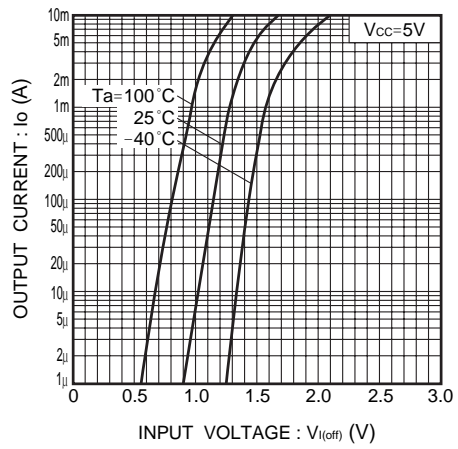


Fig.2 Output current vs. input voltage (OFF characteristics)

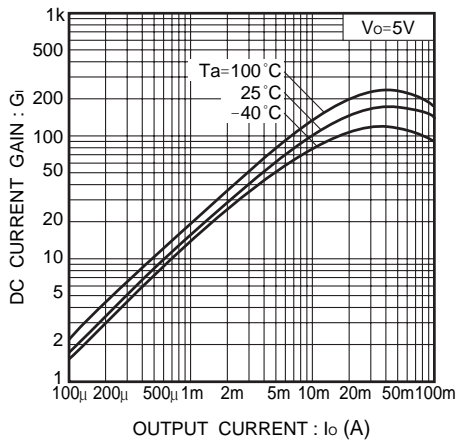


Fig.3 DC current gain vs. output current

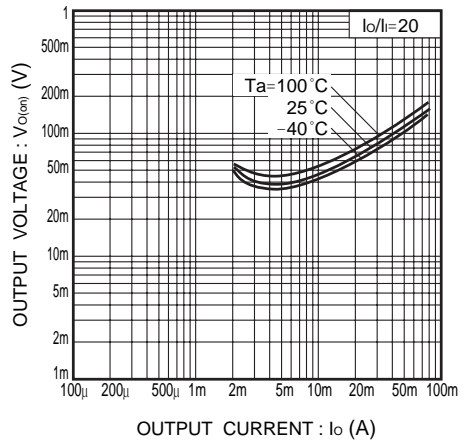
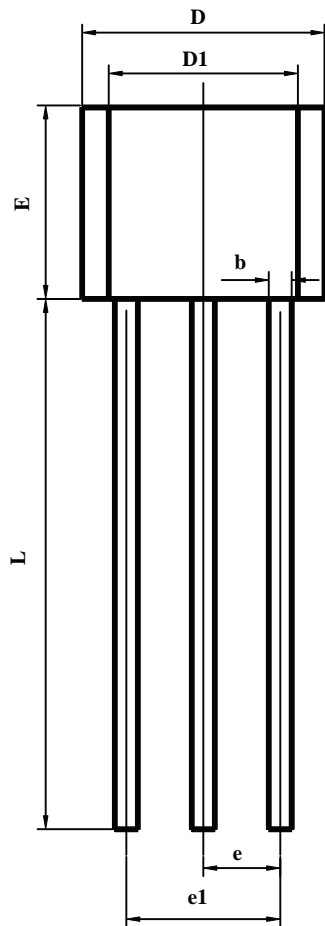


Fig.4 Output voltage vs. output current

TO-92S PACKAGE OUTLINE DIMENSIONS



Symbol	Dimensions In Millimeters	
	Min	Max
A	1.240	1.620
A1	0.660	0.860
b	0.380	0.550
c	0.360	0.510
D	3.850	4.150
D1	2.970	3.270
E	3.010	3.310
e	1.270TYP	
e1	2.440	2.640
L	15.10	15.50
θ	45°TYP	

