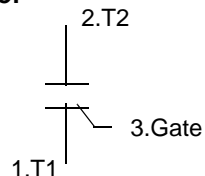


Triac / Standard Gate

Features

Repetitive Peak Off-State Voltage : 600V
 R.M.S On-State Current ($I_{T(RMS)} = 4 \text{ A}$)
 High Commutation dv/dt
 Isolation Voltage ($V_{ISO} = 2500\text{V AC}$)

Symbol



$$BV_{DRM} = 600\text{V}$$

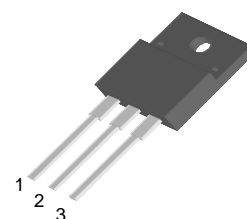
$$I_{T(RMS)} = 4 \text{ A}$$

$$I_{TSM} = 44 \text{ A}$$

General Description

This device is suitable for low power AC switching application, phase control application such as fan speed and temperature modulation control, industrial and domestic lighting control and static switching relay.

TO-220F



Absolute Maximum Ratings ($T_J = 25^\circ\text{C}$ unless otherwise specified)

Symbol	Parameter	Condition	Ratings	Units
V_{DRM}	Repetitive Peak Off-State Voltage	Sine wave, 50 to 60 Hz, Gate open	600	V
$I_{T(RMS)}$	R.M.S On-State Current	$T_C = 99^\circ\text{C}$, Full Sine wave	4.0	A
I_{TSM}	Surge On-State Current	One Cycle, 50Hz/60Hz, Peak, Non-Repetitive	40/44	A
I^2t	I^2t for Fusing	$t_p = 10\text{ms}$	4.5	A^2s
P_{GM}	Peak Gate Power Dissipation	$T_C = 99^\circ\text{C}$, Pulse width 1.0us	3	W
$P_{G(AV)}$	Average Gate Power Dissipation	Over any 20ms period	0.3	W
I_{GM}	Peak Gate Current	$t_p = 20\mu\text{s}$, $T_J = 125^\circ\text{C}$	1.0	A
V_{GM}	Peak Gate Voltage	$t_p = 20\mu\text{s}$, $T_J = 125^\circ\text{C}$	7.0	V
V_{ISO}	Isolation Breakdown Voltage(R.M.S.)	A.C. 1 minute	2500	V
T_J	Operating Junction Temperature		- 40 ~ 125	$^\circ\text{C}$
T_{STG}	Storage Temperature		- 40 ~ 150	$^\circ\text{C}$
	Mass		2.0	g

DTF4A60

Electrical Characteristics

Symbol	Items	Conditions	Ratings			Unit
			Min.	Typ.	Max.	
I_{DRM}	Repetitive Peak Off-State Current	$V_D = V_{DRM}$, Single Phase, Half Wave $T_J = 125\text{ }^\circ\text{C}$			1.0	mA
V_{TM}	Peak On-State Voltage	$I_T = 6\text{ A}$, Inst. Measurement			1.6	V
I_{GT1}^+	Gate Trigger Current	$V_D = 6\text{ V}$, $R_L = 10$			20	mA
I_{GT1}^-					20	
I_{GT3}^-					20	
V_{GT1}^+	Gate Trigger Voltage	$V_D = 6\text{ V}$, $R_L = 10$			1.5	V
V_{GT1}					1.5	
V_{GT3}					1.5	
V_{GD}	Non-Trigger Gate Voltage	$T_J = 125\text{ }^\circ\text{C}$, $V_D = 1/2 V_{DRM}$	0.2			V
$(dv/dt)_c$	Critical Rate of Rise Off-State Voltage at Commutation	$T_J = 125\text{ }^\circ\text{C}$, $[di/dt]_c = -2.0\text{ A/ms}$, $V_D = 2/3 V_{DRM}$	5.0			V/ μs
I_H	Holding Current			5.0		mA
$R_{th(j-c)}$	Thermal Impedance	Junction to case			4.0	$^\circ\text{C/W}$

Notes :

1. Pulse Width 300us , Duty cycle 2%

DTF4A60

Fig 1. Gate Characteristics

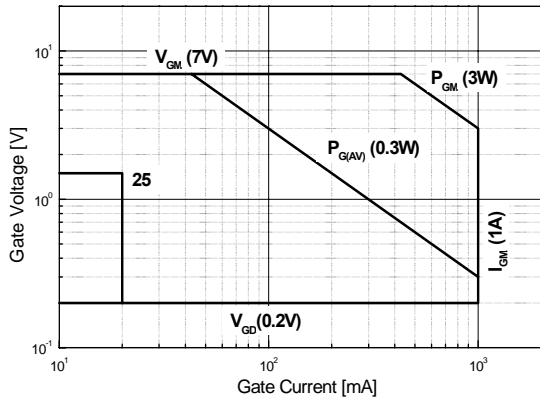


Fig 2. On-State Voltage

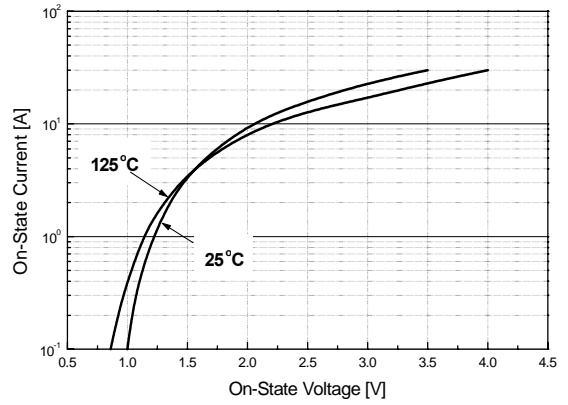


Fig 3. On State Current vs. Maximum Power Dissipation

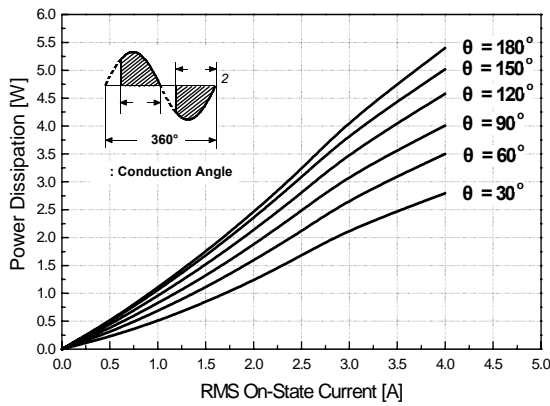


Fig 4. On State Current vs. Allowable Case Temperature

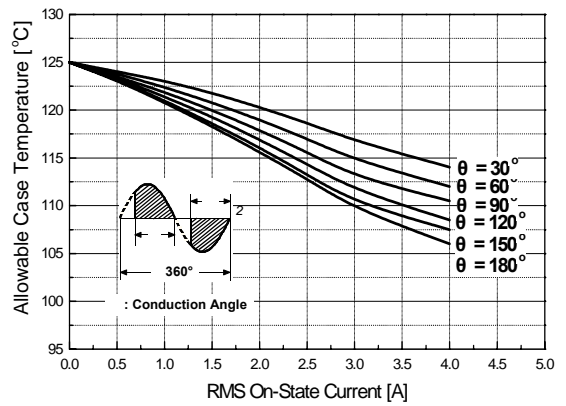


Fig 5. Surge On-State Current Rating (Non-Repetitive)

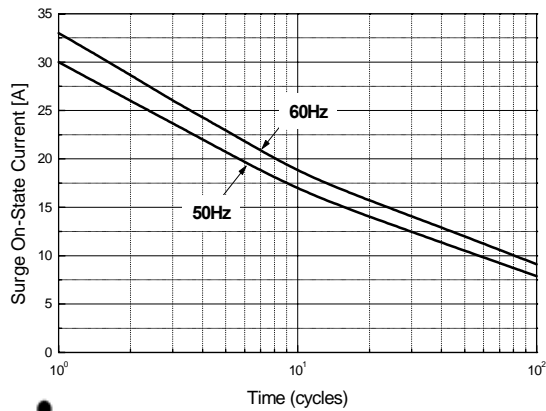
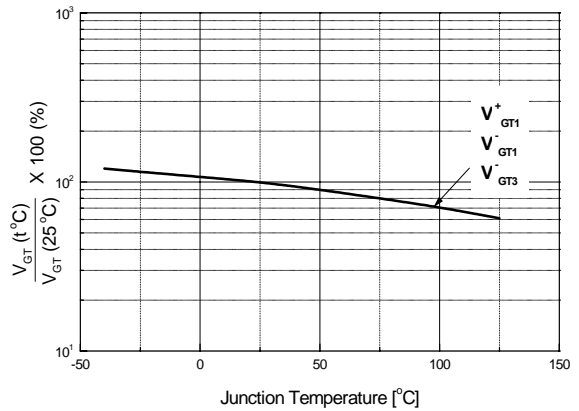


Fig 6. Gate Trigger Voltage vs. Junction Temperature



DTF4A60

Fig 7. Gate Trigger Current vs. Junction Temperature

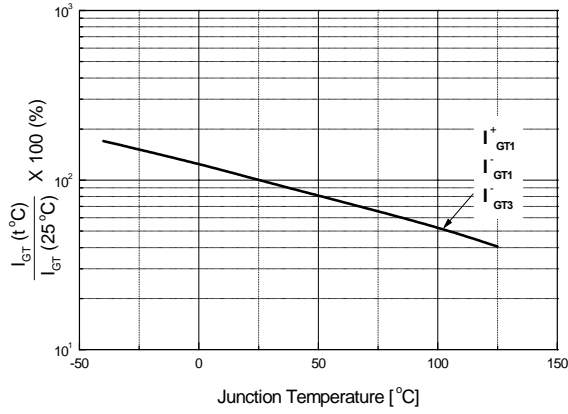


Fig 8. Transient Thermal Impedance

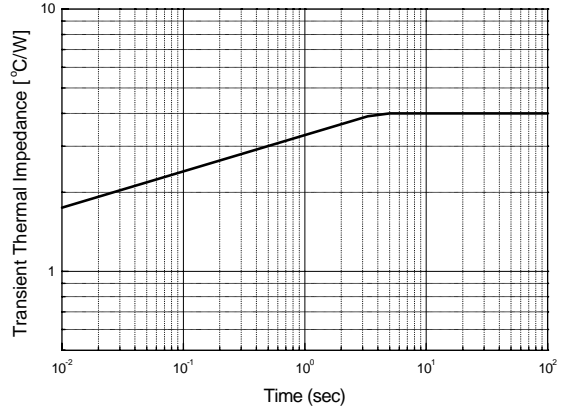
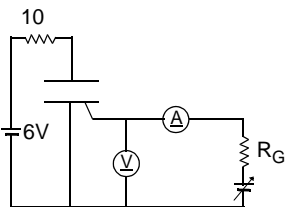
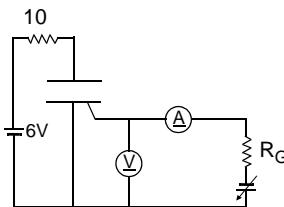


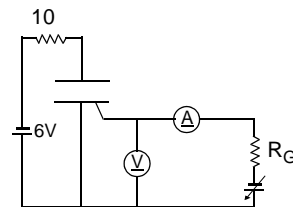
Fig 9. Gate Trigger Characteristics Test Circuit



Test Procedure



Test Procedure

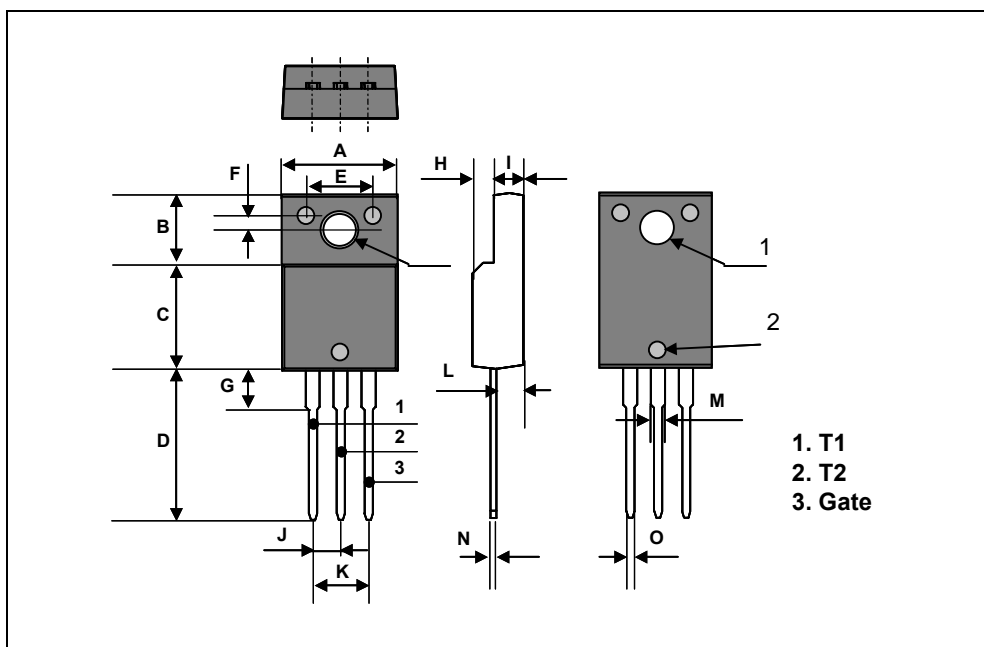


Test Procedure

DTF4A60

TO-220F Package Dimension

Dim.	mm			Inch		
	Min.	Typ.	Max.	Min.	Typ.	Max.
A	10.4		10.6	0.409		0.417
B	6.18		6.44	0.243		0.254
C	9.55		9.81	0.376		0.386
D	13.47		13.73	0.530		0.540
E	6.05		6.15	0.238		0.242
F	1.26		1.36	0.050		0.054
G	3.17		3.43	0.125		0.135
H	1.87		2.13	0.074		0.084
I	2.57		2.83	0.101		0.111
J		2.54			0.100	
K		5.08			0.200	
L	2.51		2.62	0.099		0.103
M	1.25		1.55	0.049		0.061
N	0.45		0.63	0.018		0.025
O	0.6		1.0	0.024		0.039
		3.7			0.146	
1		3.2			0.126	
2		1.5			0.059	



DTF4A60

TO-220F Package Dimension, Forming

Dim.	mm			Inch		
	Min.	Typ.	Max.	Min.	Typ.	Max.
A	10.4		10.6	0.409		0.417
B	6.18		6.44	0.243		0.254
C	9.55		9.81	0.376		0.386
D	8.4		8.66	0.331		0.341
E	6.05		6.15	0.238		0.242
F	1.26		1.36	0.050		0.054
G	3.17		3.43	0.125		0.135
H	1.87		2.13	0.074		0.084
I	2.57		2.83	0.101		0.111
J		2.54			0.100	
K		5.08			0.200	
L	2.51		2.62	0.099		0.103
M	1.25		1.55	0.049		0.061
N	0.45		0.63	0.018		0.025
O	0.6		1.0	0.024		0.039
P		5.0			0.197	
		3.7			0.146	
1		3.2			0.126	
2		1.5			0.059	

