

SANYO	No.2832B	DWC010
		Silicon Epitaxial Planar Type
Ultrahigh-Speed Switching Diode		

Features

- Ideally suited for use in hybrid ICs because of very small-sized package.
- High breakdown voltage : $V_R=200V$.
- Small interterminal capacitance.

Absolute Maximum Ratings at $T_a=25^\circ C$

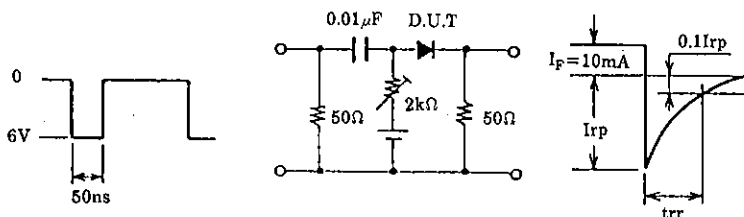
			unit
Peak Reverse Voltage	V_{RM}	250	V
Reverse Voltage	V_R	200	V
Peak Forward Current	I_{FM}	Unit rating	300 mA
		Total rating	450 mA
Average Rectified Current	I_O	Unit rating	100 mA
		Total rating	150 mA
Surge Forward Current	I_{FSM}	$1\mu s$, unit rating	4 A
		$1\mu s$, total rating	6 A
Allowable Power Dissipation	P	200	mW
Junction Temperature	T_j	125	$^\circ C$
Storage Temperature	T_{stg}	-55 to +125	$^\circ C$

Electrical Characteristics at $T_a=25^\circ C$

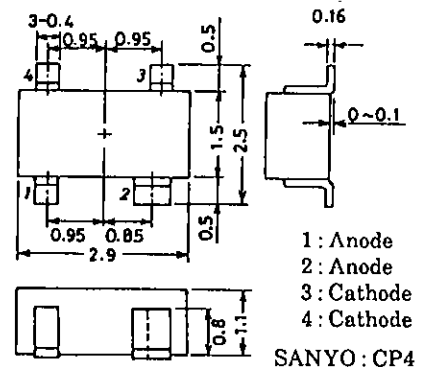
			min	typ	max	unit
Forward Voltage	V_{F1}	$I_F=10mA$		0.72		V
		$I_F=100mA$			1.2	V
Reverse Current	I_{R1}	$V_R=50V$			0.1	μA
		$V_R=200V$			1.0	μA
Interterminal Capacitance	C	$V_R=0V, f=1MHz$			3.0	pF
Reverse Recovery Time	t_{rr}	$I_F=10mA, V_R=6V, R_L=50\Omega, I_{rr}=0.1I_{rp}$			60	ns

Marking : AW

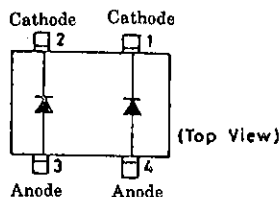
Reverse Recovery Time Test Circuit

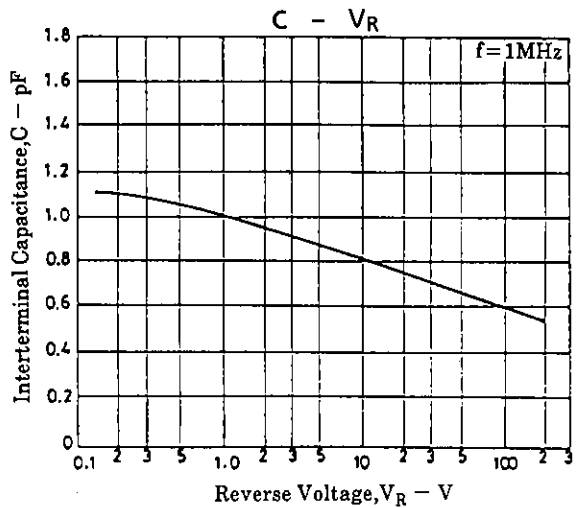
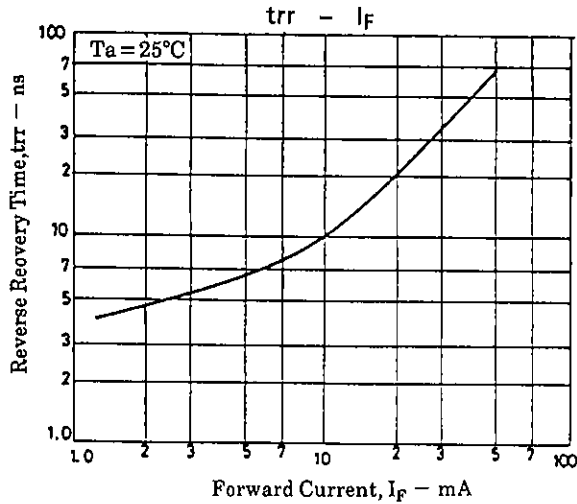
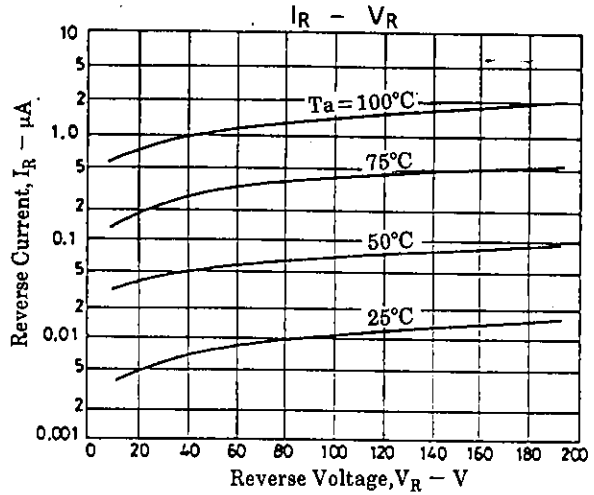
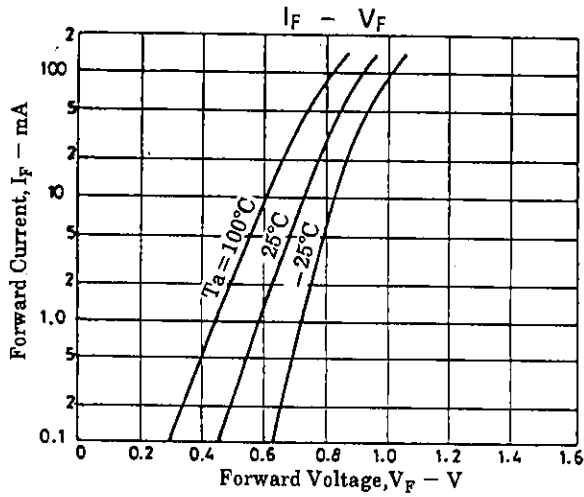


Package Dimensions 1164A
(unit : mm)



Electrical Connection





- No products described or contained herein are intended for use in surgical implants, life-support systems, aerospace equipment, nuclear power control systems, vehicles, disaster/crime-prevention equipment and the like, the failure of which may directly or indirectly cause injury, death or property loss.
- Anyone purchasing any products described or contained herein for an above-mentioned use shall:
 - ① Accept full responsibility and indemnify and defend SANYO ELECTRIC CO., LTD., its affiliates, subsidiaries and distributors and all their officers and employees, jointly and severally, against any and all claims and litigation and all damages, cost and expenses associated with such use;
 - ② Not impose any responsibility for any fault or negligence which may be cited in any such claim or litigation on SANYO ELECTRIC CO., LTD., its affiliates, subsidiaries and distributors or any of their officers and employees jointly or severally.
- Information (including circuit diagrams and circuit parameters) herein is for example only; it is not guaranteed for volume production. SANYO believes information herein is accurate and reliable, but no guarantees are made or implied regarding its use or any infringements of intellectual property rights or other rights of third parties.

This catalog provides information as of September, 1995. Specifications and information herein are subject to change without notice.