

ALTERNATOR DIODE FOR AUTOMOTIVE APPLICATION.

FEATURES

- Average Forward Current : $I_O=30A$.

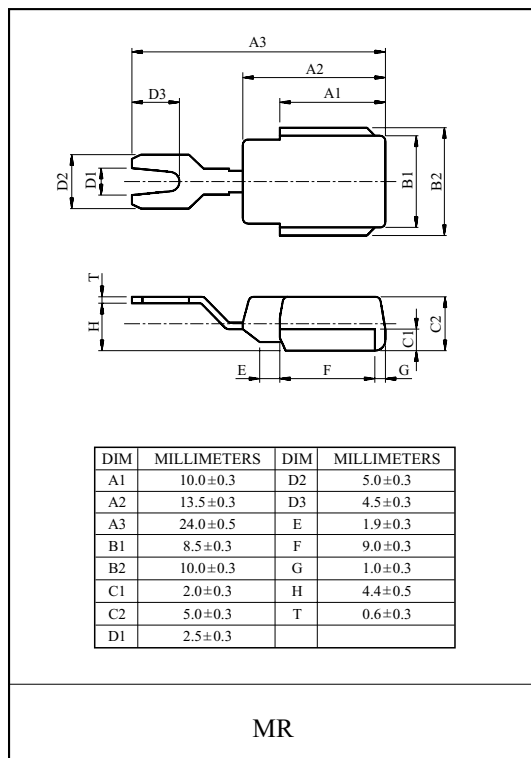
POLARITY

E30A27VS E30A27VR

(+ Type) (- Type)

MAXIMUM RATING ($T_a=25$)

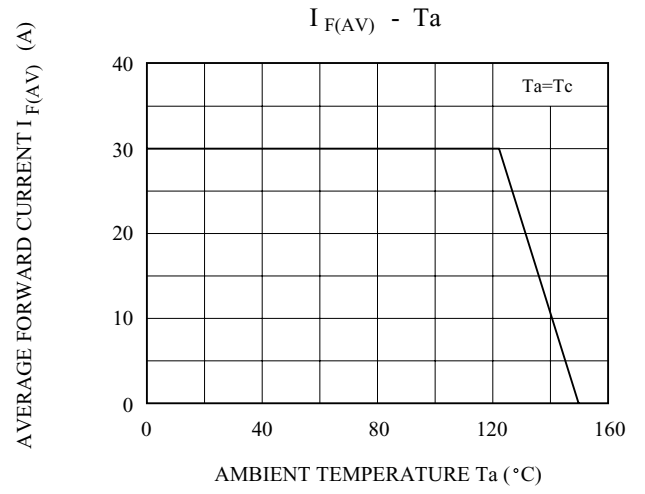
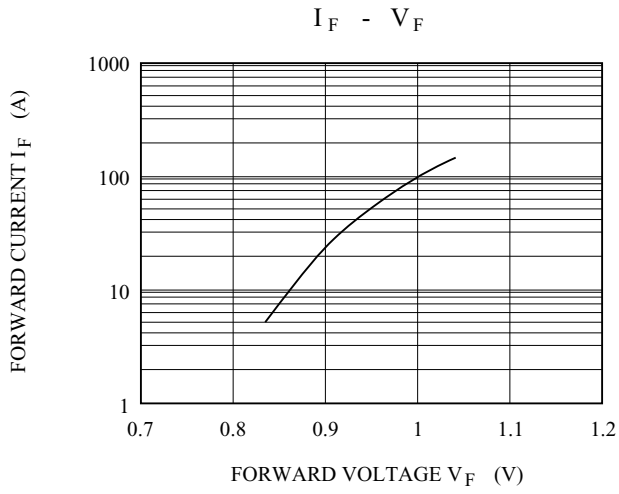
CHARACTERISTIC	SYMBOL	RATING	UNIT
DC Reverse Voltage	V_{DC}	24	V
Average Forward Current	$I_{F(AV)}$	30	A
Peak 1 Cycle Surge Current	I_{SM}	250 (50Hz)	A
Non-Repetitive Reverse 1 Cycle Surge Current	I_{SMR}	50	A
Junction Temperature	T_j	-40 ~ 150	°C
Storage Temperature Range	T_{stg}	-40 ~ 150	°C



ELECTRICAL CHARACTERISTICS ($T_a=25$)

CHARACTERISTIC	SYMBOL	TEST CONDITION	TYP.	MAX.	UNIT
Zener Voltage	V_Z	$I_Z=10mA$	24	30	V
Peak Forward Voltage	V_{FM}	$I_{FM}=100A$	-	1.2	V
Repetitive Peak Reverse Current	I_{RRM}	$V_{RRM}=24V$	-	50	μA
Zener Voltage Temperature Coefficient	r_Z	$I_Z=10mA$	23	36	mV/°C
Reverse Recovery Time	t_{rr}	$I_F=0.1A, I_R=0.1A$	-	15	μs
Temperature Resistance	R_{th}	DC total junction to case	-	1.0	°C/W

E30A27VS, E30A27VR



**Not recommended
for new design**