

ALTERNATOR DIODE FOR AUTOMOTIVE APPLICATION.

FEATURES

- Average Forward Current : $I_O=35A$.
- Zener Voltage : 23V(Typ.)

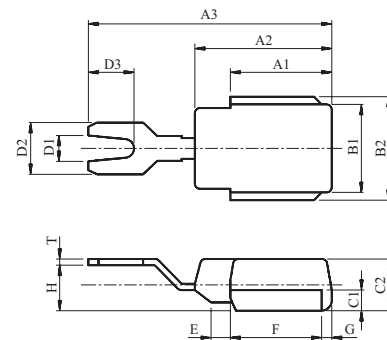
POLARITY

E35A23VS E35A23VR

(+ Type) (- Type)

MAXIMUM RATING (Ta=25)

| CHARACTERISTIC | SYMBOL | RATING | UNIT |
|--|-------------|------------|------|
| Average Forward Current | $I_{F(AV)}$ | 35 | A |
| Peak 1 Cycle Surge Current | I_{FSM} | 450 (50Hz) | A |
| Peak Reverse Surge Current ($I_{RSM}/2=10ms$) | I_{RSM} | 70 | A |
| Peak Reverse Over Voltage | V_{RSM} | 70 | V |
| Peak Reverse Voltage | V_{RM} | 17 | V |
| Junction Temperature | T_j | -40 200 | |
| Storage Temperature Range | T_{stg} | -40 150 | |



| DIM | MILLIMETERS | DIM | MILLIMETERS |
|-----|-------------|-----|-------------|
| A1 | 10.0±0.3 | D2 | 5.0±0.3 |
| A2 | 13.5±0.3 | D3 | 4.5±0.3 |
| A3 | 24.0±0.5 | E | 1.9±0.3 |
| B1 | 8.5±0.3 | F | 9.0±0.3 |
| B2 | 10.0±0.3 | G | 1.0±0.3 |
| C1 | 2.0±0.3 | H | 4.4±0.5 |
| C2 | 5.0±0.3 | T | 0.6±0.3 |
| D1 | 2.5±0.3 | | |

MR

ELECTRICAL CHARACTERISTICS (Ta=25)

| CHARACTERISTIC | SYMBOL | TEST CONDITION | MIN. | TYP. | MAX. | UNIT |
|--|-----------|---------------------------|------|------|------|------|
| Peak Forward Voltage | V_{FM} | $I_{FM}=100A$ | - | - | 1.05 | V |
| Zener Voltage | V_Z | $I_Z=10mA$ | 20 | 23 | 26 | V |
| Repetitive Peak Reverse Current | I_{RRM} | $V_R=V_{RM}$ | - | - | 10 | μA |
| Transient Thermal Resistance | V_F | $I_{FM}=100A$ | - | - | 90 | mV |
| Reverse Leakage Current Under High Temperature | H_{IR} | $T_a=150$, $V_R=V_{RM}$ | - | - | 2.5 | mA |
| Temperature Resistance | Rth | DC total junction to case | - | - | 1.0 | /W |