

DOUBLE DIODE

EB34

Double diode with separate cathodes.
Each section is internally screened.

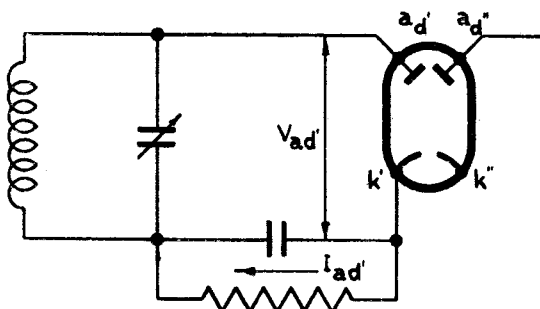
HEATER

This valve is suitable for DC/AC operation.

V_h	6.3	V
I_h	0.2	A

CAPACITANCES

$C_{ad'-k}$	4.5	$\mu\mu\text{F}$
$C_{ad''-k}$	4.5	$\mu\mu\text{F}$
$C_{ad'-ad''}$	0.5	$\mu\mu\text{F}$



LIMITING VALUES

$V_{ad'}$ max.	200	V
$V_{ad''}$ max.	200	V
$I_{ad'}$ max.	0.8	mA
$I_{ad''}$ max.	0.8	mA
$V_{h-k'}$ max.	75	V
$V_{h-k''}$ max.	75	V
$R_{h-k'}$ max.	20,000	ohms
$R_{h-k''}$ max.	20,000	ohms
$V_{ad'}$ max. ($I_{ad'}=0.3\mu\text{A}$)	-1.3	V
$V_{ad''}$ max. ($I_{ad''}=0.3\mu\text{A}$)	-1.3	V
$V_{k'-k''}$ max.	50	V



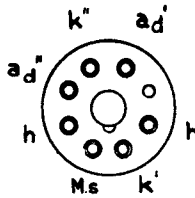
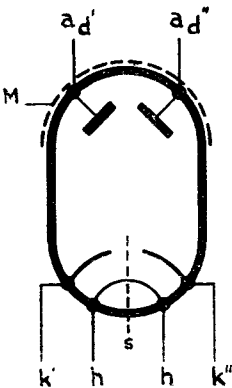
EB34

DOUBLE DIODE

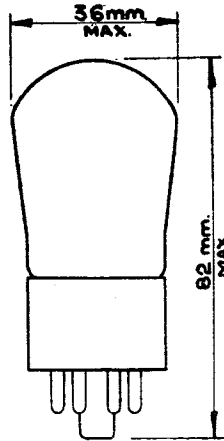
Double diode with separate cathodes.
Each section is internally screened.

ARRANGEMENT OF ELECTRODES
AND BASE CONNECTIONS

DIMENSIONS



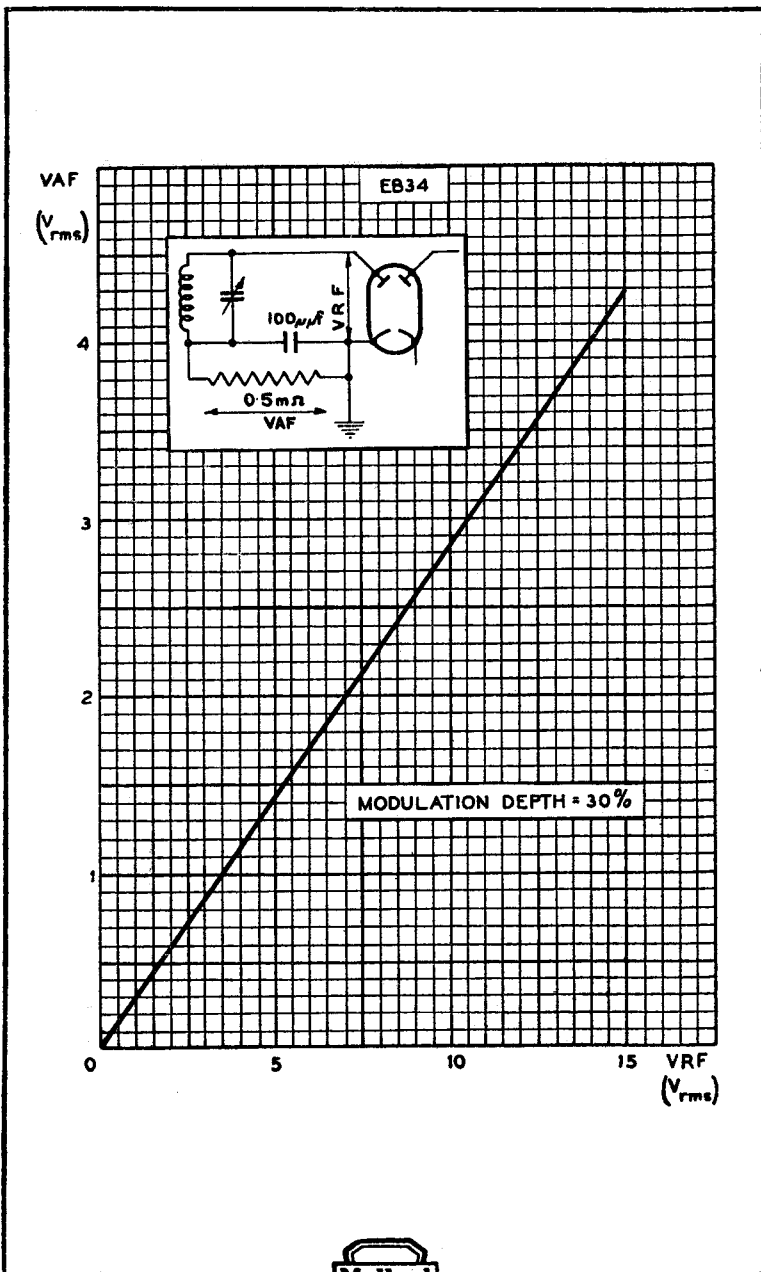
OCTAL BASE



DOUBLE DIODE

EB34

Double diode with separate cathodes.
Each section is internally screened.



EB34

DOUBLE DIODE

Double diode with separate cathodes.
Each section is internally screened.

