



# Edgeboard Connectors

## Single Readout, Dip Solder, Eyelet and Wire Wrap™ Termination



### FEATURES

- 0.156" [3.96mm] C-C.
- Modified tuning fork contacts have chamfered lead-in to reduce wear on printed circuit board contacts without sacrificing contact pressure and wiping action.
- Accepts PC board thickness of 0.054" to 0.070" [1.37mm to 1.78mm].
- Polarization on or between contact position in all sizes. Between contact polarization permits polarizing without loss of a contact position.
- Polarizing key is reinforced nylon, may be inserted by hand, requires no adhesive.
- Protected entry, provided by recessed leading edge of contact, permits the card slot to straighten and align the board before electrical contact is made. Prevents damage to contacts which might be caused by warped or out of tolerance boards.
- Optional terminal configurations, including eyelet (Type A), dip-solder (Types B, C, D, R), Wire Wrap™ (Types E, F).
- **Connectors with Type A, B, C, D or R contacts are recognized under the Component Program of Underwriters Laboratories, Inc. Listed under File 65524, Project 77CH3889.**

### ELECTRICAL SPECIFICATIONS

**Current Rating:** 5 amps.

**Test Voltage Between Contacts:**

At Sea Level: 1800VRMS.

At 70,000 feet [21,336 meters]: 450VRMS.

**Insulation Resistance:** 5000 Megohm minimum.

**Contact Resistance:** (Voltage Drop) 30 millivolts maximum at rated current with gold flash.

### PHYSICAL SPECIFICATIONS

**Number of Contacts:** 6, 10, 12, 15, 18 or 22.

**Contact Spacing:** 0.156" [3.96mm].

**Card Thickness:** 0.054" to 0.070" [1.37mm to 1.78mm].

**Card Slot Depth:** 0.330" [8.38mm].

### APPLICATIONS

For use with 0.062" [1.57mm] printed circuit boards requiring an edgeboard type connector on 0.156" [3.96mm] centers.

### MATERIAL SPECIFICATIONS

**Body:** Glass-filled phenolic per MIL-M-14, Type MFH, black, flame retardant (UL 94V-0).

**Contacts:** Copper alloy.

**Finish:** 1 = Electro tin plated. 2 = Gold flash.

**Polarizing Key:** Glass-filled nylon.

**Optional Threaded Mounting Insert:** Nickel plated brass (Type Y).

**Optional Floating Mounting Bushing:** Cadmium plated brass (Type Z).

### ORDERING INFORMATION

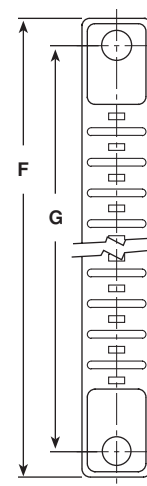
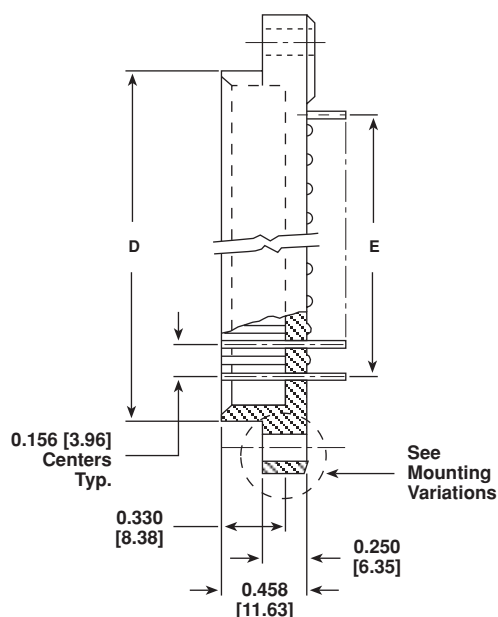
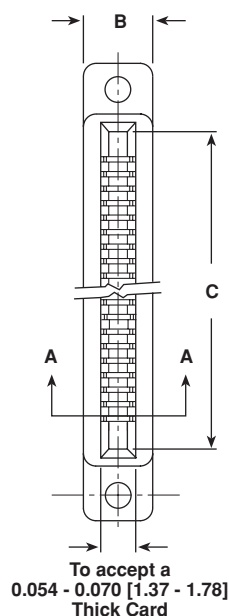
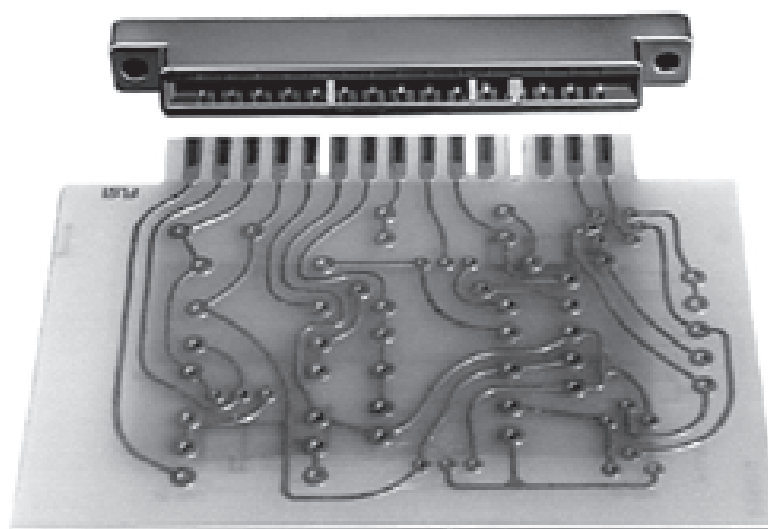
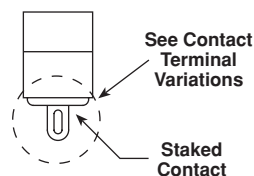
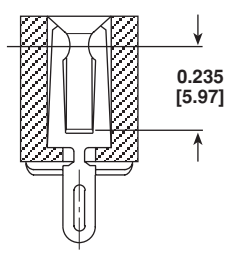
EBT156 MODEL	10 CONTACTS	A CONTACT TERMINAL VARIATIONS	1 CONTACT FINISH	X MOUNTING VARIATIONS	A, J BETWEEN CONTACT POLARIZATION	A9, J9 ON CONTACT POLARIZATION
	6, 10, 12, 15, 18, 22	A, B, C, D, E, F, R	1 = Electro Tin Plated 2 = Gold Flash	W, X, Y, Z		
			Required <b>only</b> when polarizing key(s) are to be <b>factory installed</b> . Polarization key positions: Between contact polarization key(s) are located to the right of the contact position(s) desired. Example: <b>A, J</b> means keys between <b>A</b> and <b>B</b> , and <b>J</b> and <b>K</b> .			Required <b>only</b> when polarizing key(s) are to be <b>factory installed</b> . Polarization key replaces contact. When polarizing key(s) replaces contact(s), indicate by adding suffix "9" to contact position(s) desired. Example: <b>A9, J9</b> means keys replace terminals <b>A</b> and <b>J</b> .

**EBT156**

Vishay Dale

Edgeboard Connectors

Single Readout, Dip Solder, Eyelet and Wire Wrap™ Termination

**DIMENSIONS** in inches [millimeters]**Section A-A**

Between contact or on contact polarization available in all sizes for factory or field insertion.

# OF CONTACT POSITIONS	B	C	D	E	F	G
6	0.340 [8.64]	1.10 [27.94]	1.24 [31.50]	0.781 [19.84]	1.80 [45.72]	1.53 [38.86]
10	0.340 [8.64]	1.72 [43.69]	1.86 [47.24]	1.41 [35.81]	2.43 [61.72]	2.16 [54.86]
12	0.340 [8.64]	2.04 [51.82]	2.18 [55.37]	1.72 [43.69]	2.74 [69.60]	2.47 [62.74]
15	0.340 [8.64]	2.50 [63.50]	2.65 [67.31]	2.19 [55.63]	3.21 [81.53]	2.94 [74.68]
18	0.340 [8.64]	2.97 [75.44]	3.11 [78.99]	2.66 [67.56]	3.68 [93.47]	3.41 [86.61]
22	0.340 [8.64]	3.60 [91.44]	3.74 [95.0]	3.28 [83.31]	4.30 [109.22]	4.03 [102.36]

www.DataSheet4U.com

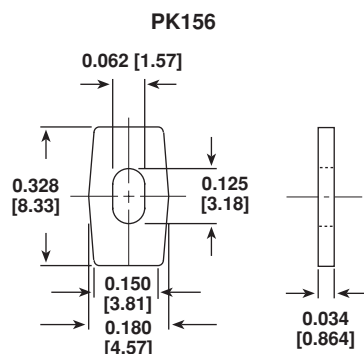


# Edgeboard Connectors

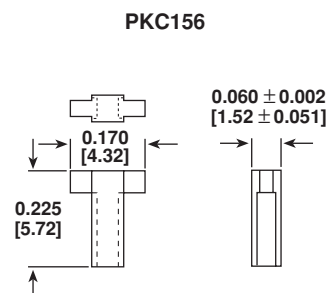
## Single Readout, Dip Solder, Eyelet and Wire Wrap™ Termination

Vishay Dale

### POLARIZING KEYS in inches [millimeters]

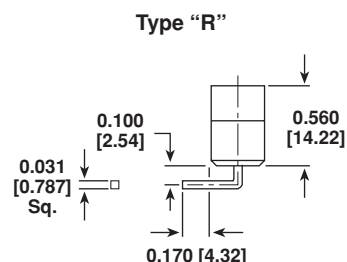
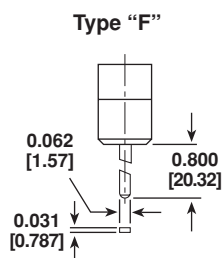
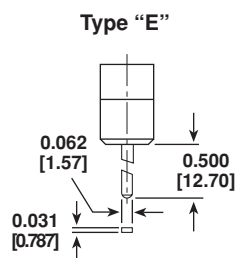
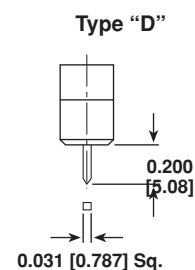
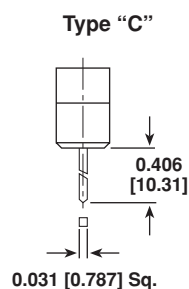
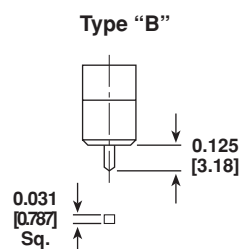
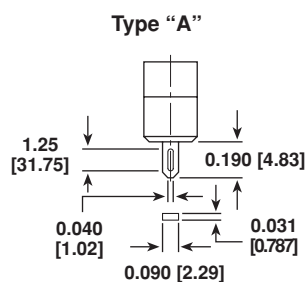


Between Contact Polarizing Key

On Contact Polarizing Key  
(Field insertable)

When ordering polarizing keys individually, specify by Model Number PK156 or PKC156.

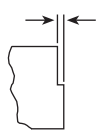
### TERMINAL VARIATIONS in inches [millimeters]



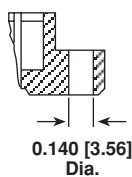
### MOUNTING VARIATIONS in inches [millimeters]

**Type "W"**  
No Mounting Flange

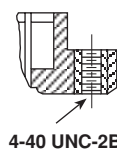
+ 0.010 [0.254]  
- 0.000 [0.000]



**Type "X"**  
Clearance Hole



**Type "Y"**  
Threaded Insert



**Type "Z"**  
Floating Bushing

