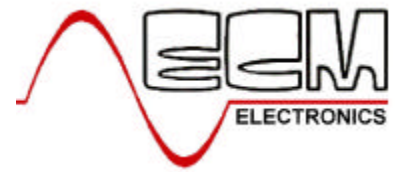


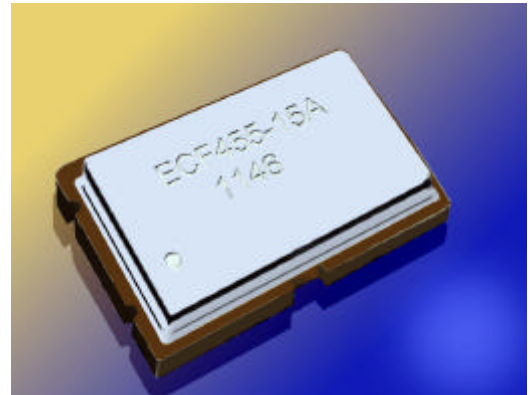
Surface Mount Crystal Filters



www.DataSheet4U.com

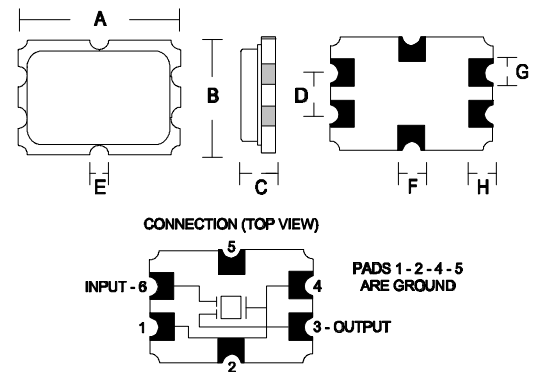
ECF45 Series

- Ultra Thin 1.5mm max
- Surface Mount
- Suitable for Reflow Soldering
- Ceramic to Metal Seal
- Suitable for Pick & Place



Type	Centre Frequency	Ripple (max)	Number Of Poles	Passband Width	Termination Impedance	Case Style
F45S015A	45.0MHz	1.0dB	2	3dB +/-7.50kHz	560Ω//6pF	7x5x1.5mm
F45S030A	45.0MHz	1.0dB	2	3dB +/-15.0kHz	1200Ω//1.8pF	7x5x1.5mm
F44S211B	44.25MHz	1.0dB	4	3dB +/-5.50kHz	430Ω//4pF	7x5x1.5mm

Environmental & Mechanical		
Shock	Random Drop 120 cm 3cycle	No Change in electrical characteristics
Vibration	10-55Hz 1.5mm amplitude in each plane	No Change in electrical characteristics
Solderability	5 Seconds @ 230°C +/-5°C	95% Coverage with a continuous coating
Leakage	Air Leak and Helium Leak	Leak rate 1×10^{-4} atm cc/sec Leak rate 1×10^{-8} atm cc/sec
Damp Heat 2Hrs	+40°C +/-2°C Humidity 90-95%	No Change in electrical characteristics
Temperature 1000Hrs +/- 24Hrs	-25°C +/-3°C +70°C +/-2°C Retest after 2Hrs	No Change in electrical characteristics
Cleaning	Organic Solution	



A	B	C	D	E	F	G	H
7.00	5.00	1.50	2.54	0.60	1.00	1.00	1.20

Dimensions in mm

ECM Electronics Limited, Penmaen House, Ashington, West Sussex, RH20 3JR, UK
Tel: +44(0)1903 892810: Fax: +44(0)1903 892738. Email: ecm@ecmelectronics.co.uk

Although we have attempted to accurately reflect the products we market. ECM reserve the right without prior notice to discontinue any product or make design changes we believe necessary. www.DataSheet4U.com
Issue 1