

10A Avg.

30 Volts

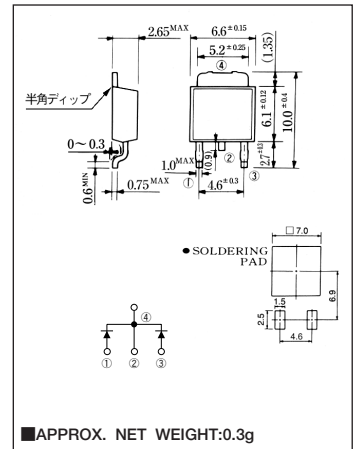
SBD

ECQ10A03L-F

最大定格 Maximum Ratings

| Item | Symbol | Conditions | Unit |
|--|------------|---|---------------------------------|
| くり返しピーク逆電圧 Repetitive Peak Reverse Voltage | V_{RRM} | 30 | V |
| 平均整流電流 Average Rectified Forward Current | I_O | 50Hz、正弦全波通電抵抗負荷 50Hz Full Sine Wave Resistive Load | $T_c=106^{\circ}C$ 10.0 A |
| | | 同上 基板実装時* P.C.Board mounted* | $T_a=30^{\circ}C$ 2.0 A |
| 実効順電流 R.M.S. Forward Current | $I_F(RMS)$ | 11.1 | A |
| サージ順電流 Surge Forward Current | I_{FSM} | 100 50Hz正弦全波, 1サイクル, 非くり返し 50Hz Full Sine Wave, 1cycle, Non-repetitive | A |
| 動作接合温度範囲 Operating Junction Temperature Range | T_{jw} | -40~+150 | $^{\circ}C$ |
| 保存温度範囲 Storage Temperature Range | T_{stg} | -40~+150 | $^{\circ}C$ |

OUTLINE DRAWING(mm)



電氣的・熱的特性 Electrical/Thermal Characteristics

| Item | Symbol | Conditions | Min. | Typ. | Max. | Unit |
|--------------------------------|---------------|---|------|------|------|---------------|
| ピーク逆電流 Peak Reverse Current | I_{RM} | $T_j=25^{\circ}C, V_{RM}=V_{RRM}$, 一素子あたり Per Diode | — | — | 5 | mA |
| ピーク順電圧 Peak Forward Voltage | V_{FM} | $T_j=25^{\circ}C, I_{FM}=5A$, 一素子あたり Per Diode | — | — | 0.47 | V |
| 熱抵抗 Thermal Resistance | $R_{th(j-c)}$ | 接合部・ケース間 Junction to Case | — | — | 4 | $^{\circ}C/W$ |
| | $R_{th(j-a)}$ | 接合部・周囲間 Junction to Ambient | — | — | 80 | $^{\circ}C/W$ |

* Print Land=20×20mm

定格・特性曲線

