

CATHODE RAY TUBES

High-sensitivity oscilloscope tubes
with $3\frac{1}{2}$ -in. diameter screen.

ECR35 ECR35P

HEATER

V_h	4.0	V
I_h	1.0	A

CAPACITANCES

Grid to all other electrodes	< 25	uuF
Each X plate or each Y plate to all other electrodes	< 25	uuF
One X plate to one Y plate	< 5	uuF

FLUORESCENT COLOUR

ECR.35 Green. Non-persistent.
ECR.35P Blue, with yellow-green afterglow.

DEFLECTION

Electrostatic. The tube is suitable for either symmetrical or asymmetrical operation.

With asymmetrical deflection the trapezoidal distortion is such that the angle between adjacent sides of a 45 mm x 70 mm scan is between 85° and 95°.

OPERATING CONDITIONS

$V_{a1}=V_{a3}$	1,200	V
V_{a2}	150 to 250	V
V_g	-1.0 to -50	V

LIMITING VALUES

$V_{a1}=V_{a3}$ max	2,500	V
V_{h-k} max	50	V

DEFLECTION SENSITIVITY

X plates	$\frac{360}{V_{a3}}$	mm/V
Y plates	$\frac{780}{V_{a3}}$	mm/V



ECR35 ECR35P

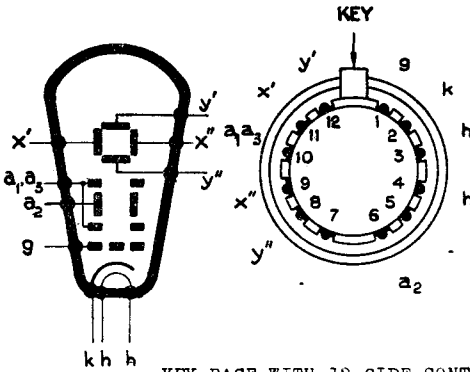
CATHODE RAY TUBES

High-sensitivity oscilloscope tubes
with $3\frac{1}{2}$ -in. diameter screen.

Viewed from the screen end, and with the tube positioned so that the key of the base is uppermost, a positive voltage on X' will deflect the spot to the left, and a positive voltage on Y' will deflect the spot upwards.

DIMENSIONS

ARRANGEMENT OF ELECTRODES AND BASE CONNECTIONS



KEY BASE WITH 12 SIDE CONTACTS

Contacts 5, 7 and 10
should be connected
together externally

