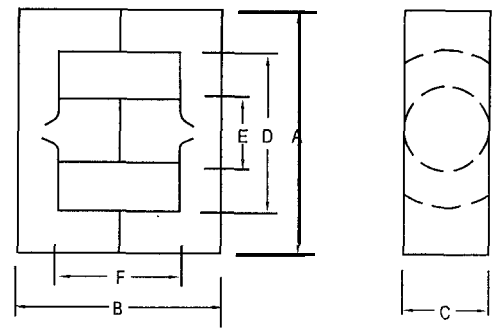


EER Cores

ETD www.DataSheet4U.com

AL-Value(nH/N² ±25%): 1 kHz, 0.25v, 1 00Ts, 25 ±3°C



R* (DIMENSIONS)

規格 (Type)	尺寸 (Dimensions)						(unit: mm)
	A	B	C	D	E	F	
EER23/24	23.20±0.40	23.90±0.30	8.20±0.20	18.90min	6.90±0.15	17.60±0.40	
EER24/29	24.40±0.50	28.90±0.30	8.50±0.30	18.00min	8.50±0.20	20.20±0.40	
EER26/16	25.50±0.50	16.00±0.40	7.50±0.20	19.80min	7.50±0.15	9.80±0.40	
EER26/19	25.50±0.50	19.00±0.40	7.50±0.20	19.80min	7.50±0.15	12.80±0.40	
EER28/20	28.50 ^{+0.50} _{-0.40}	20.00±0.30	11.40±0.25	21.40min	9.90±0.25	12.80 ^{+0.50} ₋₀	
EER28/28	28.50±0.60	28.00±0.50	11.40±0.30	21.20min	9.90±0.30	19.30±0.50	
EER28/28A	28.50±0.60	28.00±0.50	11.40±0.30	21.80min	9.90±0.30	19.30±0.50	
EER28/34	28.50±0.60	33.80±0.50	11.40±0.30	21.20min	9.90±0.30	25.00±0.50	
EER28/34A	28.50±0.60	33.80±0.50	11.40±0.30	21.80min	9.90±0.30	25.00±0.50	
EER30/16	30.00±0.50	16.00±0.30	20.00±0.30	25.60min	11.00±0.20	10.60±0.40	
EER30/22	29.80±0.80	21.80±0.40	9.50±0.30	22.00min	9.50±0.30	12.20±0.40	
EER30/32	29.80±0.80	31.60±0.60	9.50±0.30	22.00min	9.50±0.30	22.00±0.60	
EER30/35	33.00±0.50	34.60±0.60	13.80±0.25	24.50min	12.50±0.25	25.60±0.50	
EER34/26	34.20±0.80	26.00±0.40	10.80±0.30	25.60min	10.80±0.30	15.60±0.60	

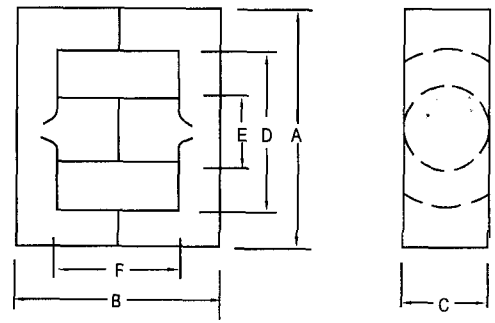
磁芯參數及性能 (CORE SET PARAMETERS AND ELECTRICAL CHARACTERISTICS)

規格 (Type)	Le (mm)	Ae (mm ²)	C1 (mm ⁻¹)	Ve (mm ³)	材 料 Material				
					JPP-3	JPP-4	JPH-5	JPH-7	JPH-10
					AL	AL	AL	AL	AL
EER23/24	56.4	39.9	1.4	2250.4	1600	1500			
EER24/29	62.3	59.0	1.1	3675.7	2200	2000			
EER26/16	42.3	44.5	1.0	1882.4	2400	2200			
EER26/19	48.3	44.3	1.1	2139.7	2100	1900			
EER28/20	49.5	81.0	0.6	4009.5	3550	3300			
EER28/28	63.0	86.0	0.7	5418.0	3100	2850			
EER28/28A	63.4	83.6	0.8	5300.2	3100	2850			
EER28/34	74.4	85.4	0.9	6353.8	2650	2450			
EER28/34A	74.8	83.1	0.9	6215.9	2650	2450			
EER30/16	43.2	109	0.4	4708.8	5900	5450			
EER30/22	51.2	78.0	0.7	3993.6	3300	3050			
EER30/32	70.7	76.2	0.9	5387.3	2400	2200			
EER30/35	78.3	125	0.6	9787.5	3700	3400			
EER34/26	61.9	98.4	0.6	6091.0	3100	2850			

EER Cores

www.DataSheet4U.com
ETD

AL-Value(nH/N²±25%): 1 kHz, 0.25v, 100Ts, 25±3°C

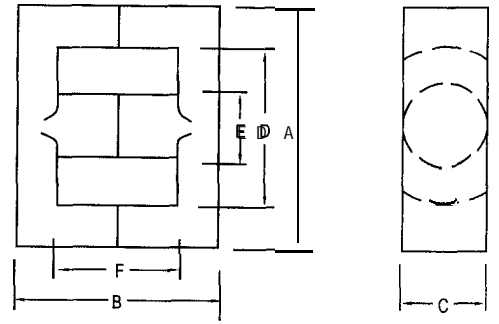


尺寸 (DIMENSIONS)

規格 (Type)	尺寸 (Dimensions)						(unit: mm)
	A	B	C	D	E	F	
EER34/35	34.20±0.80	35.80±0.40	10.80±0.30	25.60min	10.80±0.30	20.40±0.60	
EER35/30	35.00±0.70	30.00±0.40	11.30±0.40	25.30min	11.30±0.30	20.00±0.40	
EER35/42	35.30±0.50	41.80±0.50	11.30±0.30	26.40min	11.30±0.30	29.80±0.50	
EER35/43	35.30±0.50	43.00±0.50	11.30±0.30	26.40min	11.30±0.30	31.00±0.50	
EER39/36	39.10±0.90	35.60±0.40	12.50±0.30	29.30min	12.50±0.30	25.20±0.80	
EER39/40	39.30±0.50	40.40±0.50	12.70±0.20	29.30min	12.70±0.20	30.00±0.50	
EER39/43	39.30±0.50	42.20±0.50	12.70±0.30	29.30min	12.70±0.30	32.00±0.50	
EER39/45	39.30±0.50	44.60±0.50	12.70±0.30	29.30min	12.70±0.30	34.20±0.50	
EER40/42	40.00 ^{+0.80} _{-0.50}	42.60±0.40	15.00±0.20	30.70min	14.00±0.25	30.60±0.40	
EER40/45A	40.00 ^{+0.80} _{-0.50}	45.00±0.40	15.00±0.20	30.70min	14.00±0.25	33.00±0.40	
EER40/45	40.00±0.50	44.80±0.50	13.30±0.30	29.00min	13.30±0.30	30.80±0.50	
EER42/15	42.00±0.80	43.80±0.50	14.80±0.20	30.40min	14.80±0.20	31.80±0.60	
EER42/42	42.00 ^{+0.80} _{-0.50}	42.40±0.40	20.00 ⁺⁰ _{-0.80}	31.80min	17.30±0.25	30.00 ^{+1.0} _{-0.50}	
EER42/42A	42.00±0.60	42.80±0.60	15.20±0.30	30.40min	15.20±0.30	30.80±0.80	

磁芯參數及性能 (CORE SET PARAMETERS AND ELECTRICAL CHARACTERISTICS)

規格 (Type)	Le (mm)	Ae (mm ²)	C1 (mm ⁻¹)	Ve (mm ³)	材 料 Material				
					JPP-3	JPP-4	JPH-5	JPH-7	JPH-10
					AL	AL	AL	AL	AL
EER34/35	79.0	97.0	0.8	7663.0	3000	2750			
EER35/30	70.3	107	0.7	7522.1	3100	2850			
EER35/42	91.0	109	0.8	9919.0	2950	2700			
EER35/43	93.0	109	0.9	10137	2700	2500			
EER39/36	84.6	125	0.7	10575	3200	2950			
EER39/40	92.6	124	0.7	11482	2650	2400			
EER39/43	97.4	124	0.8	12077	2600	2400			
EER39/45	101.5	123	0.8	12484	2600	2400			
EER40/42	96.3	158	0.6	15215	3750	3450			
EER40/45A	101	157	0.6	15857	3550	3250			
EER40/45	97.4	151	0.6	14707	3400	3150			
EER42/15	98.8	172	0.6	16993	4500	4200			
EER42/42	95.1	234	0.4	22253	5200	4800			
EER42/42A	96.9	183	0.5	17732	4150	3800			



AL-Value(nH/N²±25%): 1 kHz, 0.25v, 100Ts, 25±3°C

尺寸 (DIMENSIONS)

規格 (Type)	R 寸 (Dimensions)					
	A	B	C	D	E	F
EER42/45	42.00±0.50	44.60±0.60	15.20±0.30	30.50min	15.20±0.30	32.60±0.60
EER42/45A	42.00±0.60	44.80±0.40	15.50±0.30	29.40min	15.50±0.30	30.80±0.60
EER42/49	42.00±0.80	49.40±0.40	19.60±0.40	31.50min	17.30±0.35	37.60±0.60
EER44/45	44.00±1.0	44.60±0.50	14.90±0.30	32.50min	14.90±0.30	33.00±0.80
EER45/35	45.00±1.0	35.00±0.40	17.60±0.40	33.00min	17.60±0.40	21.90±0.50
EER49/42	49.00 ^{+0.70} _{-0.50}	42.00 ^{+0.10} _{-0.20}	17.20 ^{+0.20} _{-0.40}	33.60min	17.20 ^{+0.20} _{-0.40}	28.80 ^{+0.80} ₋₀
EER49/50	48.70±0.10	49.40±0.40	16.30±0.40	36.10min	16.30±0.40	36.20±0.80
EER49/54	49.00±0.80	54.00±0.50	17.20±0.30	36.40min	17.20±0.30	37.00±0.50
EER53/45	53.20 ^{+0.80} _{-0.50}	46.40±0.60	21.50±0.30	38.70min	20.00 ^{+0.20} _{-0.40}	32.60±0.60
EER54/55	54.50±1.30	55.20±0.40	18.90±0.40	40.10min	18.90±0.40	40.40±0.80
EER55/57	55.00±0.50	56.80±0.80	24.70±0.40	41.70min	20.60±0.30	38.00±0.60
EER60/62	59.80±1.30	62.00±0.40	21.65±0.45	43.60min	21.65±0.45	45.00±0.80

磁芯參數及性能 (CORE SET PARAMETERS AND ELECTRICAL CHARACTERISTICS)

規格 (Type)	Le (mm)	Ae (mm ²)	Cl (mm ⁻¹)	Ve (mm ³)	材 料 Material				
					JPP-3	JPP-4	JPH-5	JPH-7	JPH-10
					AL	AL	AL	AL	AL
EER42/45	100	183	0.5	18300	4050	3750			
EER42/45A	97.3	201	0.5	19557	4600	4200			
EER42/49	109	232	0.5	25288	4450	4150			
EER44/45	104	173	0.6	17992	3500	3200			
EER45/35	81.2	232	0.4	18838	6050	5560			
EER49/42	100	227	0.4	2270	5200	4800			
EER49/50	114	211	0.5	24054	4150	3800			
EER49/54	118	241	0.5	28438	5700	5250			
EER53/45	108	318	0.3	34344	6450	5950			
EER54/55	127	279	0.5	35433	5000	4600			
EER55/57	127	334	0.4	42418	6150	5650			
EER60/62	141	367	0.4	51747	5900	5450			