

VARIABLE-MU R.F. PENTODE

EF39

Variable-mu R.F. pentode with sliding screen characteristics, for use as controlled R.F. or I.F. amplifier.

HEATER

This valve is suitable for DC/AC operation.

V_h	6.3	V
I_h	0.2	A

CAPACITANCES

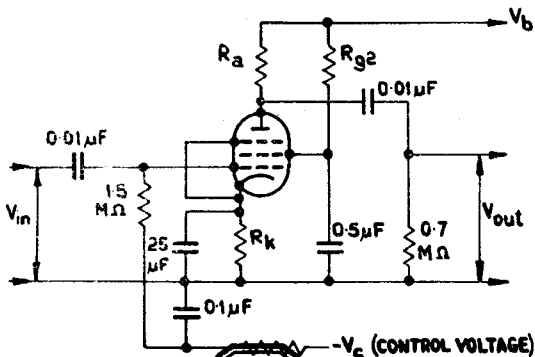
ca-g1	<0.003	$\mu\mu\text{F}$
cin	5.5	$\mu\mu\text{F}$
cout	7.2	$\mu\mu\text{F}$

OPERATING CONDITIONS AS R.F. OR I.F. AMPLIFIER

V_a	200	200	250	250	V
R_{g2}	60,000	60,000	90,000	90,000	Ω
V_{g2}	100	200	100	250	V
V_{g3}	0	0	0	0	V
V_{g1}	-2.5	-39	-2.5	-49	V
I_a	6.0	-	6.0	-	mA
I_{g2}	1.7	-	1.7	-	mA
S_m	2.2	0.0055	2.2	0.0045	mA/V
r_a	0.9	> 10	1.25	> 10	$\text{M}\Omega$
R_k	325	325	325	325	Ω

OPERATING CONDITIONS AS CONTROLLED-GAIN R.C. COUPLED AMPLIFIER

V_b (V)	R_a ($\text{M}\Omega$)	R_{g2} ($\text{M}\Omega$)	I_a (mA)	I_{g2} (mA)	R_k (Ω)	V_c -(V)	V_{out} (Vrms)	$\frac{V_{out}}{V_{in}}$	D_{tot} (%)
250	0.2	0.8	0.87	0.26	1750	0	10	106	2.7
250	0.2	0.8	0.69	0.21	1750	5	10	40	2.7
250	0.2	0.8	0.55	0.17	1750	10	10	23	3.7
250	0.2	0.8	0.37	0.11	1750	18	10	11.6	4.8
250	0.2	0.8	0.17	0.05	1750	25	10	6.7	8.8
250	0.1	0.4	1.6	0.45	1000	0	10	85	2.5
250	0.1	0.4	1.22	0.36	1000	5	10	36	2.7
250	0.1	0.4	0.92	0.28	1000	10	10	20	4.1
250	0.1	0.4	0.57	0.18	1000	18	10	9.2	6.1
250	0.1	0.4	0.36	0.11	1000	25	10	5.5	9.5



EF39

VARIABLE-MU R.F. PENTODE

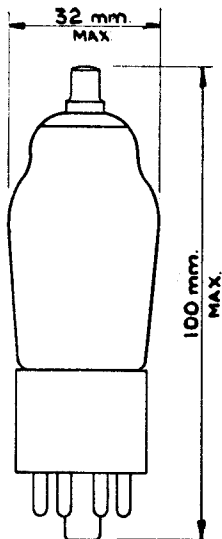
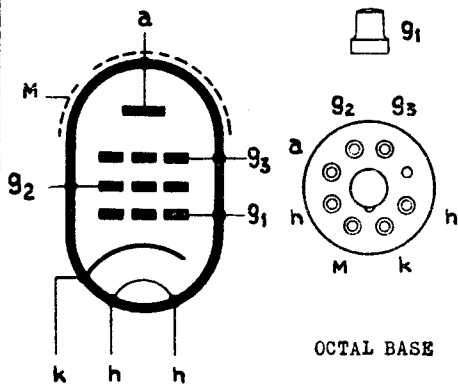
Variable-mu R.F. pentode with sliding screen characteristics, for use as controlled R.F. or I.F. amplifier.

LIMITING VALUES

$V_{a(b)}$ max.	550	V
V_a max.	300	V
w_a max.	2	W
I_k max.	10	mA
$V_{g2(b)}$ max.	550	V
V_{g2} max. ($I_a=6\text{mA}$)	125	V
V_{g2} max. ($I_a=3\text{mA}$)	300	V
w_{g2} max.	0.3	W
I_{g2} max. ($I_a=6\text{mA}$; $V_{g2}=100$)	2.0	mA
I_{g2} min. ($I_a=6\text{mA}$; $V_{g2}=100$)	1.2	mA
V_{g1} max. ($I_g=+0.3\mu\text{A}$)	-1.3	V
R_{g1} max.	3	$M\Omega$
V_{h-k} max.	100	V
R_{h-k} max.	20,000	Ω

DIMENSIONS

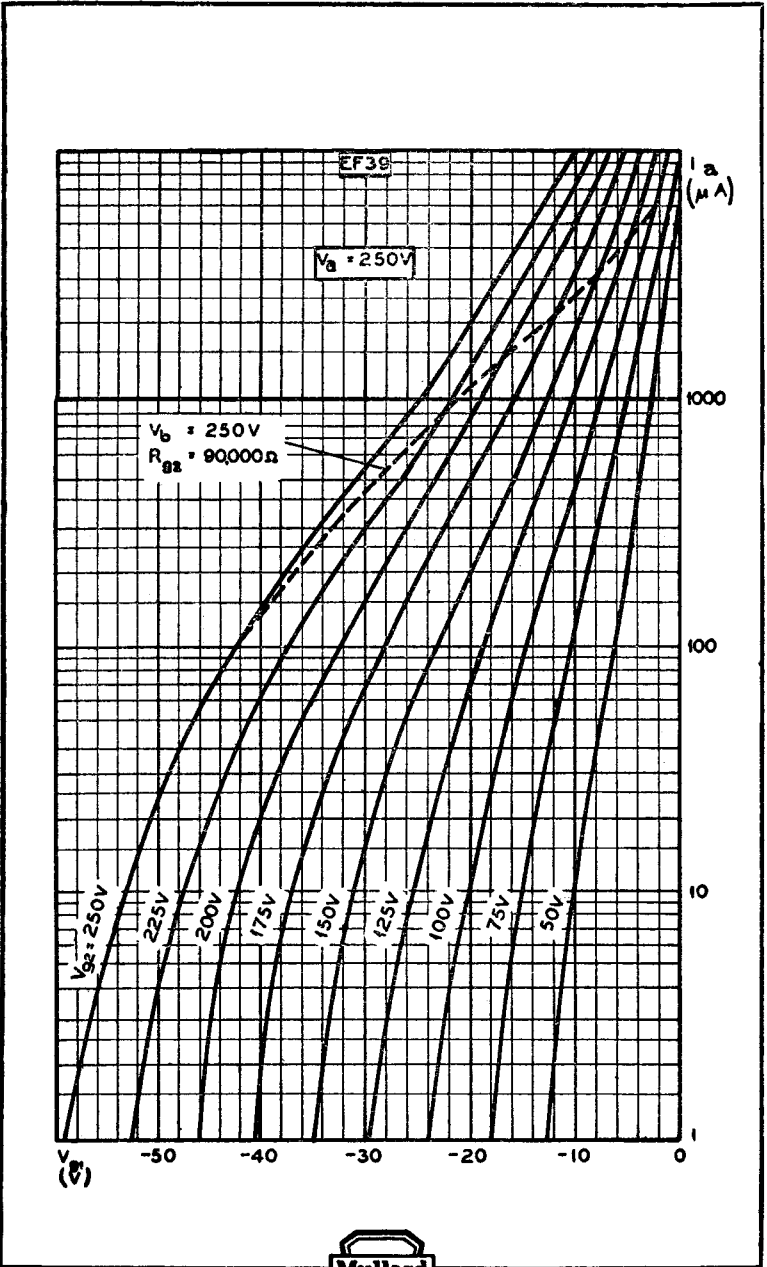
ARRANGEMENT OF ELECTRODES AND BASE CONNECTIONS



VARIABLE-MU R.F. PENTODE

EF39

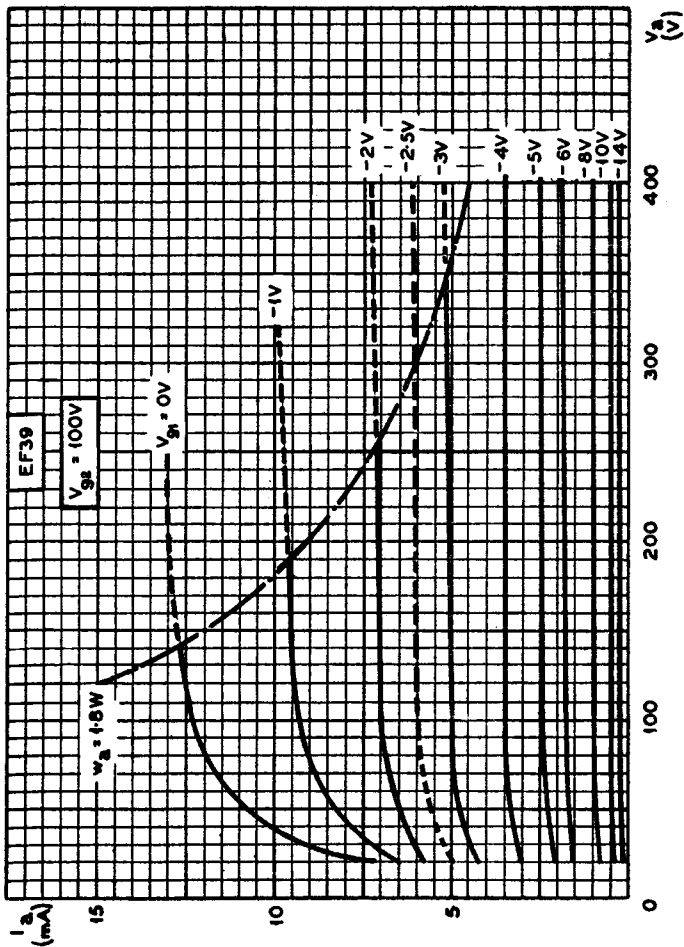
Variable-mu R.F. pentode with sliding screen characteristics, for use as controlled R.F. or I.F. amplifier.



EF39

VARIABLE-MU R.F. PENTODE

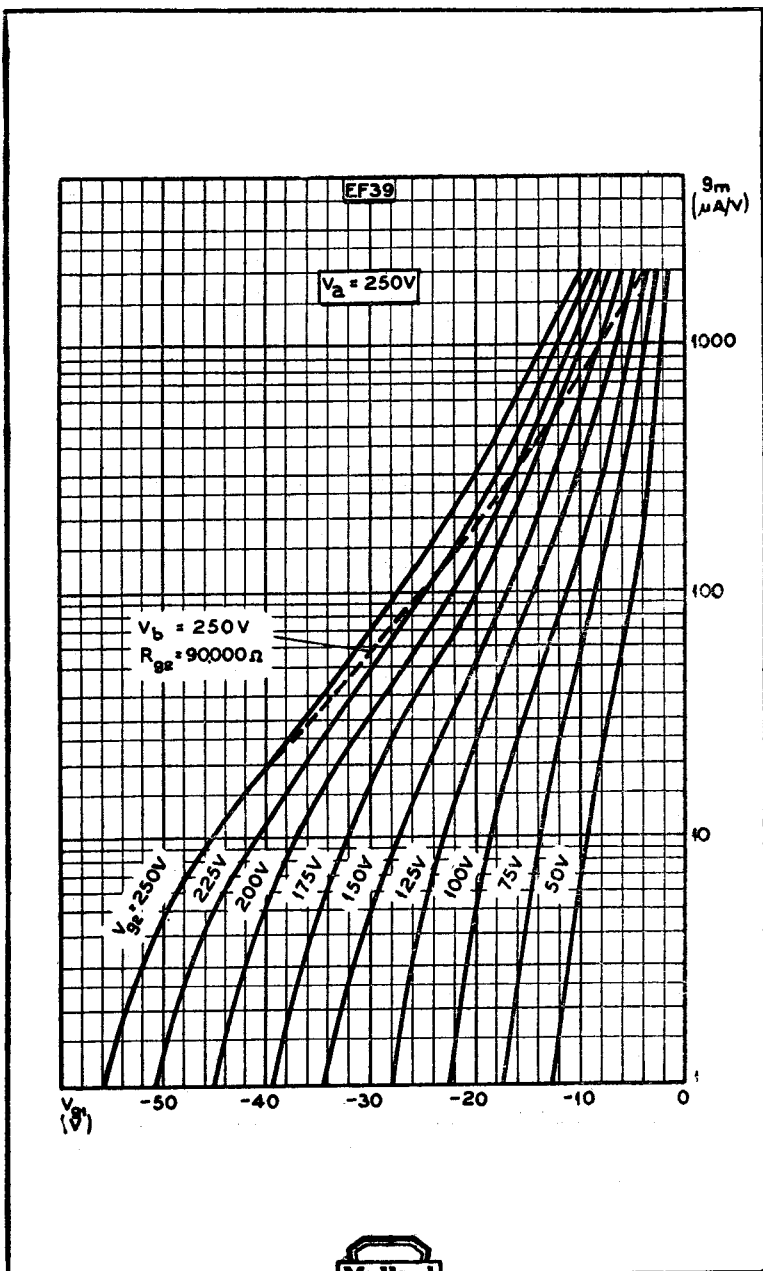
Variable-mu R.F. pentode with sliding screen characteristics, for use as controlled R.F. or I.F. amplifier.



VARIABLE-MU R.F. PENTODE

EF39

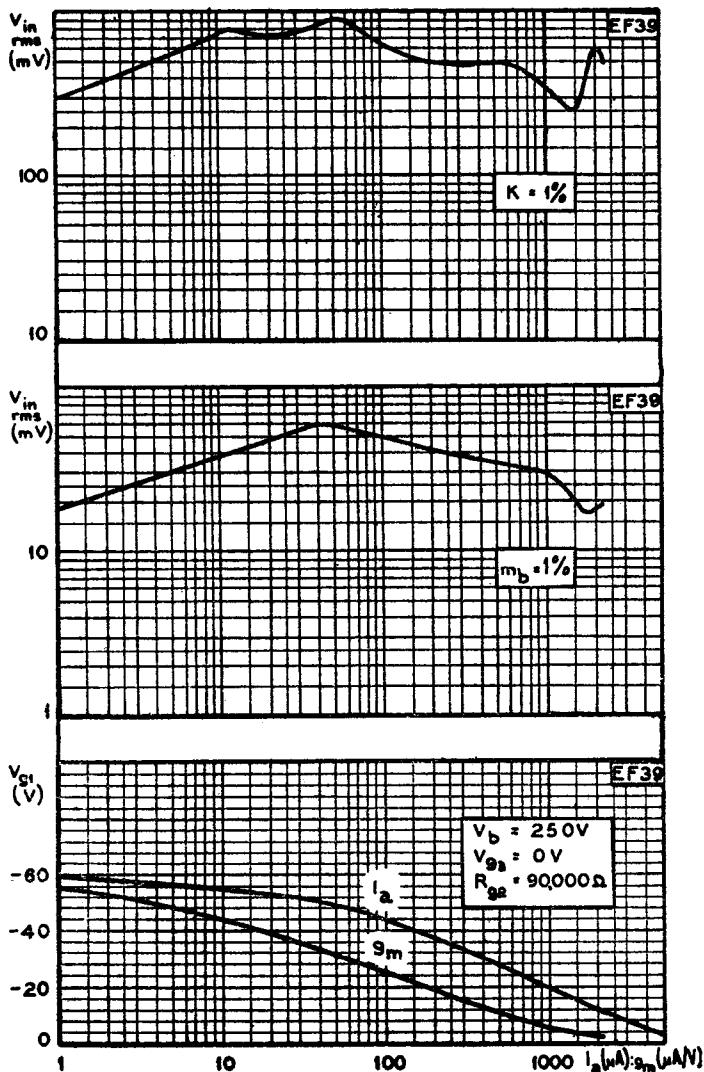
Variable-mu R.F. pentode with sliding screen characteristics, for use as controlled R.F. or I.F. amplifier.



EF39

VARIABLE-MU R.F. PENTODE

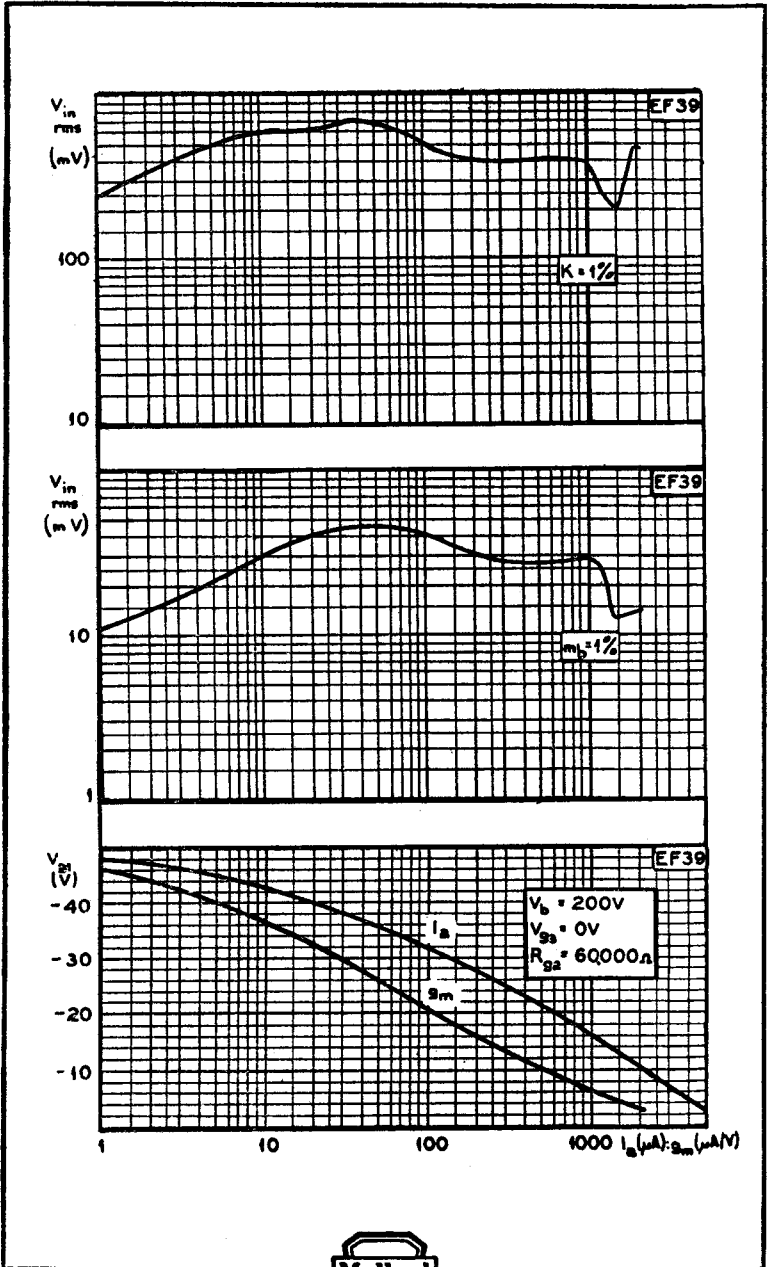
Variable- μ R.F. pentode with sliding screen characteristics, for use as controlled R.F. or I.F. amplifier.



VARIABLE-MU R.F. PENTODE

EF39

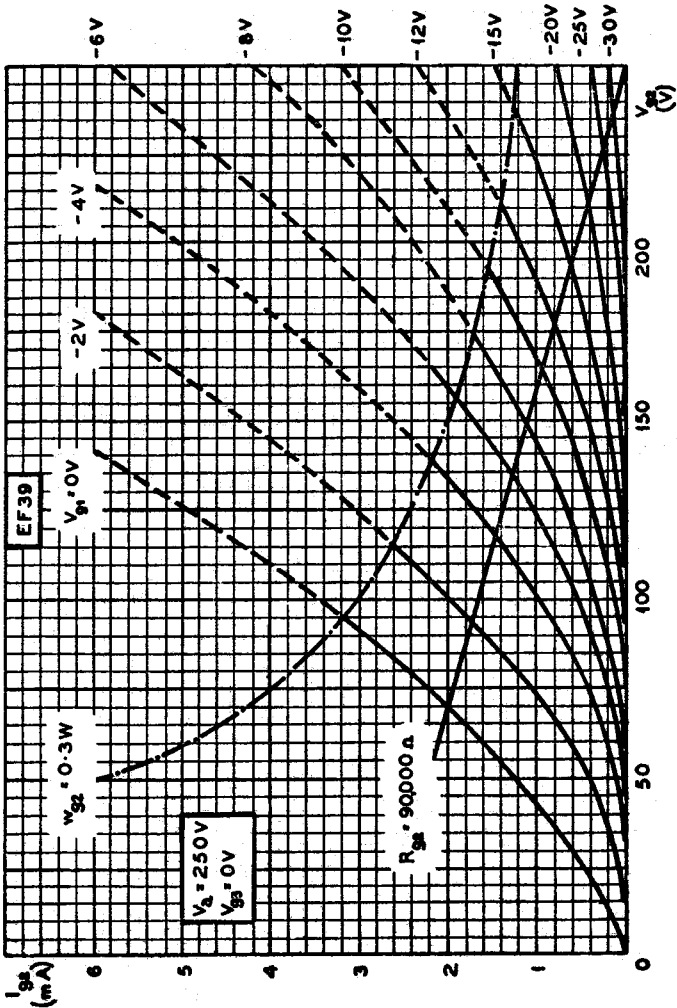
Variable-mu R.F. pentode with sliding screen characteristics, for use as controlled R.F. or I.F. amplifier.



EF39

VARIABLE-MU R.F. PENTODE

Variable-mu R.F. pentode with sliding screen characteristics, for use as controlled R.F. or I.F. amplifier.



VARIABLE-MU R.F. PENTODE

EF39

Variable-mu R.F. pentode with sliding screen characteristics, for use as controlled R.F. or I.F. amplifier.

