

NMOS 8-BIT MICROPROCESSOR

DESCRIPTION

The EF 6803 is an 8-bit single-chip microprocessor unit (MPU) which significantly enhances the capabilities of 6800 family of parts derived from the 6801 microcomputer. It includes an upgraded 6800 microprocessor unit (MPU) which upward-source and object-code compatibility. Execution times of key instructions have been improved and several new instructions have been added including an unsigned multiply. The MPU can be expanded to a 64 K byte address space. It is TTL compatible and requires one +5 volt power supply, 128 bytes of RAM, a Serial Communications Interface (SCI), parallel I/O, and a three function programmable timer. The EF 6803 can be considered as an 6801 MCU operating in modes 2 or 3.

The 6801 provides eight different operating modes (0 to 7), described in this data sheet. The EF 6803 provides two operating modes (modes 2 and 3 of 6801).

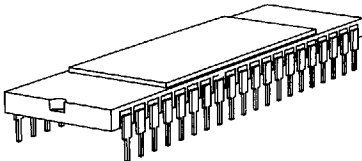
MAIN FEATURES

- Enhanced EF 6800 instruction set.
- 8 x 8 multiply instruction.
- Serial Communications Interface (SCI).
- Upward source and object code compatibility with the 6800.
- 16 bit three-function programmable timer.
- Single-chip or expanded operation to 64 K byte address space.
- Bus compatibility with the 6800 family.
- 128 bytes of RAM.
- 64 bytes of RAM retainable during powerdown.
- 29 parallel I/O and two handshake control lines.
- Internal clock generator with divide-by-four output.
- Complete development system support on DEVICE®.
- Temperature ranges :
 - 0°C to +70°C,
 - -40°C to +85°C,
 - -55°C to +125°C.

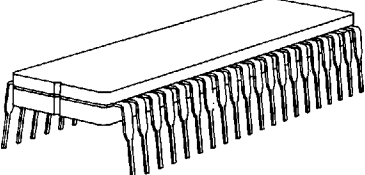
SCREENING / QUALITY

This product is manufactured in full compliance with :

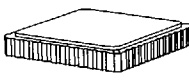
- MIL-STD-883 class B.
- NFC 96883 (class G).
- TMS standard.



**C Suffix
DIL 40
Ceramic Side Brazed**



**J Suffix
DIL 40
Cerdip**



**E Suffix
LCCC 44
Leadless Ceramic Chip Carrier**

PIN CONNECTIONS (see chapter 10)
See the Ordering Information at the end of the data sheet.

5

SUMMARY

A - GENERAL DESCRIPTION

1 - BLOCK DIAGRAM

B - DETAILED SPECIFICATION

1 - SCOPE

2 - APPLICABLE DOCUMENT

2.1 - MIL-STD-883

3 - REQUIREMENTS

3.1 - General

3.2 - Design and construction

3.3 - Electrical characteristics

3.4 - Thermal characteristics (at 25°C)

3.5 - Mechanical and environment

3.6 - Marking

4 - QUALITY CONFORMANCE INSPECTION

4.1 - MIL-STD-883

5 - ELECTRICAL CHARACTERISTICS

5.1 - General requirements

5.2 - Static characteristics

5.3 - Dynamic (switching) characteristics

5.4 - Test conditions specific to the device

6 - FUNCTIONAL DESCRIPTION

6.1 - Introduction

6.2 - 6801/6803 operating modes

6.3 - 6801/6803 interrupts

6.4 - Functional pin descriptions

6.5 - RAM control register

6.6 - Programmable timer

6.7 - Serial communications interface (SCI)

6.8 - Rate and mode control register (RMCR)

6.9 - Transmit/receive control and status register (TRCSR)

6.10 - Instruction set

6.11 - Summary of cycle-by-cycle operation

7 - PREPARATION FOR DELIVERY

7.1 - Packaging

7.2 - Certificate of compliance

8 - HANDLING

9 - PACKAGE MECHANICAL DATA

9.1 - 40 pins - DIL Ceramic Side Brazed

9.2 - 40 pins - DIL Cerdip

9.3 - 44 pins - Leadless Ceramic Chip Carrier

10 - TERMINAL CONNECTIONS

10.1 - DIL 40 - Pin assignment

10.2 - LCCC 44 - Pin assignment

11 - ORDERING INFORMATION

11.1 - Hi-REL product

11.2 - Standard product

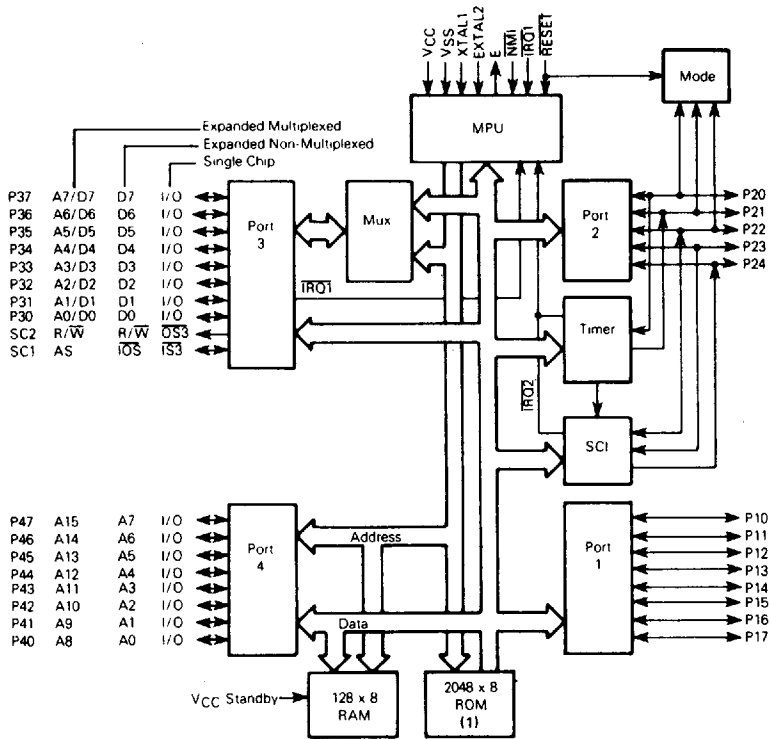


A - GENERAL DESCRIPTION

- BLOCK DIAGRAM

The EF 6803 is a high-performance microprocessor implemented in HCMOS, low power, small geometry process. This process allows CMOS and HMOS (high density NMOS) gates to be combined on the same device. CMOS structures are used where speed and low power is required, and HMOS structures are used where minimum silicon area is desired. This technology enables the EF 6803 to be very fast while consuming less power (less than 1.5 watts) and still have a reasonably small die size. The size of the EF 6803 silicon die is 5.4 x 9.2 mm. It utilizes about 190,000 transistors, 103,000 of which are actually implemented.

Figure 1 is a block diagram of the EF 6803. The processor can be divided into two main sections: the bus controller and the micromachine. This division reflects the autonomy with which the sections operate.



(1) No functioning ROM in EF6803

Figure 1: 6801/6803 block diagram.

B - DETAILED SPECIFICATIONS

1 - SCOPE

This drawing describes the specific requirements for the microprocessor EF 6803 1 and 1.5 MHz, in compliance with MIL-STD-883 class B or CECC 90000.

2 - APPLICABLE DOCUMENTS

2.1 - MIL-STD-883

- 1) MIL-STD-883 : test methods and procedures for electronics.
- 2) MIL-M-38510 : general specifications for microcircuits.

3 - REQUIREMENTS

3.1 - General

The microcircuits are in accordance with the applicable document and as specified herein.

3.2 - Design and construction

3.2.1 - Terminal connections

Depending on the package, the terminal connections shall be as shown in § 10.1 and § 10.2.

3.2.2 - Lead material and finish

Lead material and finish shall be any option of MIL-M-38510 except finish C (as described in 3.5.6.1 of 38510).

3.2.3 - Package

The macrocircuits are packaged in a hermetically sealed ceramic packages which conform to case outlines of MIL-M-38510 appendix C (when defined):

- 40 leads DIL Ceramic Side Brazed,
- 40 leads DIL Ceramic Cerdip,
- 44 terminals SQ LCCC.

The precise case outlines are described on Figures § 9.1, 9.2 and 9.3.

3.3 - Electrical characteristics

3.3.1 - Absolute maximum ratings (See Table 1)

Table 1

| Symbol | Parameter | Test conditions | Min | Max | Unit | |
|--------------------|-----------------------|--|----------------------|------|------|----|
| V _{CC} | Supply voltage | | -0.3 | +7.0 | V | |
| V _I | Input voltage | | -0.3 | +7.0 | V | |
| P _{dmax} | Max power dissipation | T _{case} = -55°C / +125°C | | 1.5 | W | |
| T _{case} | Operating temperature | M suffix : EF 6803/EF 68A03 | f = 1 and 1.5 MHz | -55 | +125 | °C |
| | | V suffix : EF 6803/EF 68A03 | f = 1 and 1.5 MHz | -40 | +85 | °C |
| | | No suffix : EF 6803/EF 68A03/ EF 68B03 | f = 1, 1.5 and 2 MHz | 0 | +70 | °C |
| T _{stg} | Storage temperature | | -55 | +150 | °C | |
| T _j | Junction temperature | | | +170 | °C | |
| T _{leads} | Lead temperature | Max 5 sec. soldering | | +270 | °C | |

This device contains circuitry to protect the inputs against damage due to high static voltages or electrical fields; however, it is advised that normal precautions be taken to avoid application of any voltage higher than maximum rated voltages to this high-impedance circuit. For proper operation it is recommended that V_{IN} and V_{OUT} be constrained to the range V_{SS} ≤ (V_{IN} or V_{OUT}) ≤ V_{CC}. Input protection is enhanced by connecting unused inputs to either V_{DD} or V_{SS}.



4 - Thermal characteristics (at 25°C)

Table 2

| Package | Symbol | Parameter | Value | Unit |
|--------------------------|---------------|--|-------|------|
| DIL 40 J and C suffix | θ_{JA} | Thermal resistance - Ceramic junction to ambient | 45 | °C/W |
| | θ_{JC} | Thermal resistance - Ceramic junction to case | 7 | °C/W |
| LCCC 44 E suffix | θ_{JA} | Thermal resistance - Ceramic junction to ambient | 40 | °C/W |
| | θ_{JC} | Thermal resistance - Ceramic junction to case | 8 | °C/W |

Power considerations

The average chip-junction temperature, T_J , in °C can be obtained from :

$$T_J = T_A + (P_D \cdot \theta_{JA}) \quad (1)$$

T_A = Ambient Temperature, °C.

θ_{JA} = Package Thermal Resistance, Junction-to-Ambient, °C/W.

P_D = $P_{INT} + P_{I/O}$.

P_{INT} = $I_{CC} \times V_{CC}$, Watts - Chip Internal Power.

$P_{I/O}$ = Power Dissipation on Input and Output Pins - User Determined.

For most applications $P_{I/O} < P_{INT}$ and can be neglected.

An approximate relationship between P_D and T_J (if $P_{I/O}$ is neglected) is :

$$P_D = K : (T_J + 273) \quad (2)$$

Solving equations (1) and (2) for K gives :

$$K = P_D \cdot (T_A + 273) + \theta_{JA} \cdot P_D^2 \quad (3)$$

where K is a constant pertaining to the particular part K can be determined from equation (3) by measuring P_D (at equilibrium) for a known T_A . Using this value of K, the values of P_D and T_J can be obtained by solving equations (1) and (2) iteratively for any value of T_A .

The total thermal resistance of a package (θ_{JA}) can be separated into two components, θ_{JC} and θ_{CA} , representing the barrier to heat flow from the semiconductor junction to the package (case), surface (θ_{JC}) and from the case to the outside ambient (θ_{CA}). These terms are related by the equation :

$$\theta_{JA} = \theta_{JC} + \theta_{CA} \quad (4)$$

θ_{JC} is device related and cannot be influenced by the user. However, θ_{CA} is user dependent and can be minimized by such thermal management techniques as heat sinks, ambient air cooling and thermal convection. Thus, good thermal management on the part of the user can significantly reduce θ_{CA} so that θ_{JA} approximately equals θ_{JC} . Substitution of θ_{JC} for θ_{JA} in equation (1) will result in a lower semiconductor junction temperature.

4.5 - Mechanical and environment

The microcircuits shall meet all mechanical environmental requirements of either MIL-STD-833 for class B devices or JEDEC 90000 devices.

4.6 - Marking

The marking where are defined the marking are identified in the related reference documents. Each microcircuit are legible and permanently marked with the following information as minimum :

4.6.1 - Thomson logo

4.6.2 - Manufacturer's part number

4.6.3 - Class B identification

4.6.4 - Date-code of inspection lot

4.6.5 - ESD Identifier if available

4.6.6 - Country of manufacturing



4 - QUALITY CONFORMANCE INSPECTION

4.1 - MIL-STD-883

Is in accordance with MIL-M-38510 and method 5005 of MIL-STD-883. Group A and B inspections are performed on each production lot. Group C and D inspection are performed on a periodical basis.

5 - ELECTRICAL CHARACTERISTICS

5.1 - General requirements

All static and dynamic electrical characteristics are specified for inspection purpose, and the relevant measurements conditions are given below :

Table 3 : Static electrical characteristics for all electrical variants. See § 5.2.

Table 4 : Dynamic electrical characteristics. See § 5.3.

5.2 - Static characteristics

Table 3 - DC electrical characteristics

$V_{CC} = 5.0 V_{dc} \pm 5\%$; $V_{SS} = 0 V_{dc}$; $T_c = -55^\circ C / +125^\circ C$ or $-40^\circ C / +85^\circ C$ and $0^\circ C / +70^\circ C$ (unless otherwise specified)

| Symbol | Characteristic | EF 6803 0°C to +70°C | | EF 6803 -40°C / +85°C | | EF 6803 -55°C / +125°C | | Unit |
|-----------------------|---|-------------------------|----------------|--------------------------|----------------|---------------------------|----------------|----------|
| | | Min | Max | Min | Max | Min | Max | |
| V_{IH} | Input high voltage \overline{RESET} Other inputs | $V_{SS} + 4.0$ | V_{CC} | $V_{SS} + 4.0$ | V_{CC} | $V_{SS} + 4.0$ | V_{CC} | V |
| | | $V_{SS} + 2.0$ | V_{CC} | $V_{SS} + 2.2$ | V_{CC} | $V_{SS} + 2.2$ | V_{CC} | V |
| V_{IL} | Input low voltage All inputs | $V_{SS} - 0.3$ | $V_{SS} + 0.8$ | $V_{SS} - 0.3$ | $V_{SS} + 0.8$ | $V_{SS} - 0.3$ | $V_{SS} + 0.8$ | V |
| I_{in} | Input load current ($V_{in} = 0$ to 2.4 V) Port 4 SCI | | 0.5 0.8 | | 0.8 1.0 | | 0.8 1.0 | mA mA |
| | | | | | | | | |
| I_{in} | Input leakage current ($V_{in} = 0$ to 5.25 V) \overline{NMI} , $\overline{IRQ1}$, \overline{RESET} | | 2.5 | | 5.0 | | 5.0 | μA |
| I_{TSI} | Hi-Z (off state) input current ($V_{in} = 0.5$ to 2.4 V) Ports 1, 2 and 3 | | 10 | | 20 | | 20 | μA |
| V_{OH} | Output high voltage (load = -65 μA , $V_{CC} = \min$)* (load = -100 μA , $V_{CC} = \min$) E, Port 4, SC1, SC2 Other outputs | $V_{SS} + 2.4$ | | $V_{SS} + 2.4$ | | $V_{SS} + 2.4$ | | V |
| | | $V_{SS} + 2.4$ | | $V_{SS} + 2.4$ | | $V_{SS} + 2.4$ | | V |
| V_{OL} | Output low voltage (load = 2.0 mA, $V_{CC} = \min$) All outputs | | $V_{SS} + 0.5$ | | $V_{SS} + 0.6$ | | $V_{SS} + 0.6$ | V |
| I_{OH} | Darlington drive current ($V_O = 1.5$ V) Port 1 | 1.0 | 4.0 | 1.0 | 5.0 | 1.0 | 5.0 | mA |
| P_{INT} | Internal power dissipation (Measured at $T_A = T_L$ in steady-state operation) | | 1200 | | 1500 | | 1500 | mW |
| C_{in} | Input capacitance Port 3, Port 4, SCI ($V_{in} = 0$, $T_A = 25^\circ C$, $f_o = 1.0$ MHz) Other inputs | | 12.5 10 | | 12.5 10 | | 12.5 10 | pF pF |
| | | | | | | | | |
| V_{SBB} V_{SB} | V_{CC} Standby Powerdown Powerup | 4.0 | 5.25 | 4.0 | 5.25 | 4.0 | 5.25 | V |
| | | 4.75 | 5.25 | 4.75 | 5.25 | 4.75 | 5.25 | V |
| I_{SSB} | Standby current Powerdown | | 6.0 | | 8.0 | | 8.0 | mA |

* Negotiable to -100 μA (for further information contact the factory).

5.3 - Dynamic (switching) characteristics

The limits and values given in this section apply over the full case temperature range $-55^\circ C$ to $+125^\circ C$ and V_{CC} in the range 4.75 V to 5.25 V $V_{IL} = 0.8$ V and $V_{IH} = 2.0$ V.

Table 4 - Control timing

CC = 5.0 V \pm 5 % ; V_{SS} = 0 ; f = 1 and 1.5 MHz: $-40^{\circ}\text{C} \leq T_C \leq +85^{\circ}\text{C}$ and $-55^{\circ}\text{C} \leq T_C \leq +125^{\circ}\text{C}$
 f = 2 MHz: $0^{\circ}\text{C} \leq T_C \leq +70^{\circ}\text{C}$ only

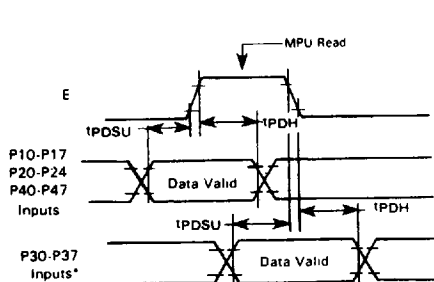
| Symbol | Characteristic | EF 6803 | | EF 68A03 | | EF 68B03 | | Unit |
|-------------------|----------------------------------|---------|-----|----------|-----|----------|-----|------|
| | | Min | Max | Min | Max | Min | Max | |
| f _o | Frequency of operation | 0.5 | 1.0 | 0.5 | 1.5 | 0.5 | 2.0 | MHz |
| f _{XTAL} | Crystal frequency | 2.0 | 4.0 | 2.0 | 6.0 | 2.0 | 8.0 | MHz |
| 4f _o | External oscillator frequency | 2.0 | 4.0 | 2.0 | 6.0 | 2.0 | 8.0 | MHz |
| t _{rc} | Crystal oscillator start up time | 100 | | 100 | | 100 | | ms |
| t _{PCS} | Processor control setup time | 200 | | 140 | | 110 | | ns |

Table 5 - Peripheral port timing (refer to Figure 2)

CC = 5.0 V \pm 5 % ; V_{SS} = 0 ; f = 1 and 1.5 MHz: $-40^{\circ}\text{C} \leq T_C \leq +85^{\circ}\text{C}$ and $-55^{\circ}\text{C} \leq T_C \leq +125^{\circ}\text{C}$
 f = 2 MHz: $0^{\circ}\text{C} \leq T_C \leq +70^{\circ}\text{C}$ only

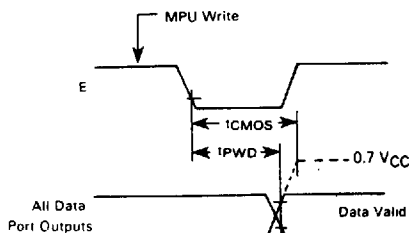
| Symbol | Characteristic | EF 6803 | | EF 68A03 | | EF 68B03 | | Unit |
|-------------------|--|---------|-----|----------|-----|----------|-----|---------------|
| | | Min | Max | Min | Max | Min | Max | |
| t _{PDSU} | Peripheral data setup time | 200 | | 150 | | 100 | | ns |
| t _{PDH} | Peripheral data hold time | 200 | | 150 | | 100 | | ns |
| t _{OSD1} | Delay time, enable positive transition to OS3negative transition | | 350 | | 300 | | 250 | ns |
| t _{OSD2} | Delay time, enable positive transition to OS3 positive transition | | 350 | | 300 | | 250 | ns |
| t _{PWD} | Delay time, enable negative transition to peripheral data valid | | 350 | | 300 | | 250 | ns |
| t _{CMOS} | Delay time, enable negative transition to peripheral CMOS data valid | | 2.0 | | 2.0 | | 2.0 | μs |
| t _{PWIS} | Input strobe pulse width | 200 | | 150 | | 100 | | ns |
| t _{IH} | Input data hold time | 50 | | 40 | | 30 | | ns |
| t _{IS} | Input data setup time | 20 | | 20 | | 20 | | ns |

5



*Port 3 Non-Latched Operation (LATCH ENABLE = 0)

Figure 2: Data setup and hold times (MPU read).



NOTES:

- 1 10 k Pullup resistor required for Port 2 to reach 0.7 V_{CC}
- 2 Not applicable to P21
- 3 Port 4 cannot be pulled above V_{CC}

Figure 3: Data setup and hold times (MPU write).

Note: Timing measurements are referenced to and from a low voltage of 0.8 volt and a high voltage of 2.0 volts, unless otherwise specified.



Table 6 - Bus timing (see Notes 1 and 2)

$V_{CC} = 5.0 \text{ V} \pm 5\%$; $V_{SS} = 0$; $f = 1$ and 1.5 MHz : $-40^{\circ}\text{C} \leq T_C \leq +85^{\circ}\text{C}$ and $-55^{\circ}\text{C} \leq T_C \leq +125^{\circ}\text{C}$
 $f = 2 \text{ MHz}$: $0^{\circ}\text{C} \leq T_C \leq +70^{\circ}\text{C}$ only

| Ident. Number | Symbol | Characteristic | EF 6803 | | EF 68A03 | | EF 68B03 | | Unit |
|---------------|------------|--|---------|------|----------|------|----------|------|---------------|
| | | | Min | Max | Min | Max | Min | Max | |
| 1 | t_{cyc} | Cycle time | 1.0 | 2.0 | 0.667 | 2.0 | 0.5 | 2.0 | μs |
| 2 | PWEL | Pulse width, E low | 430 | 1000 | 300 | 1000 | 210 | 1000 | ns |
| 3 | PWEH | Pulse width, E high | 450 | 1000 | 300 | 1000 | 220 | 1000 | ns |
| 4 | t_r, t_f | Clock rise and fall time | | 25 | | 25 | | 20 | ns |
| 9 | t_{AH} | Address hold time | 20 | | 20 | | 10 | | ns |
| 12 | t_{AV} | Non-muxed address valid to E - Note 3 | 200 | | 115 | | 70 | | ns |
| 17 | t_{DSR} | Read data setup time | 80 | | 60 | | 40 | | ns |
| 18 | t_{DHR} | Read data hold time | 10 | | 10 | | 10 | | ns |
| 19 | t_{DDW} | Write data delay time | | 225 | | 170 | | 120 | ns |
| 21 | t_{DHW} | Write data hold time | 20 | | 20 | | 10 | | ns |
| 22 | t_{AVM} | Muxed address valid time to E rise - Note 3 | 200 | | 115 | | 80 | | ns |
| 24 | t_{ASL} | Muxed address valid time to AS fall - Note 3 | 60 | | 40 | | 20 | | ns |
| 25 | t_{AHL} | Muxed address hold time | 20 | | 20 | | 10 | | ns |
| 26 | t_{ASD} | Delay time, E to AS rise Note 3 | 90* | | 60* | | 45* | | ns |
| 27 | PWASH | Pulse width, AS high - Note 3 | 220 | | 140 | | 110 | | ns |
| 28 | t_{ASED} | Delay time, AS to E rise Note 3 | 90 | | 60 | | 45 | | ns |
| 29 | t_{ACC} | Usable access time | 595 | | 380 | | 270 | | ns |

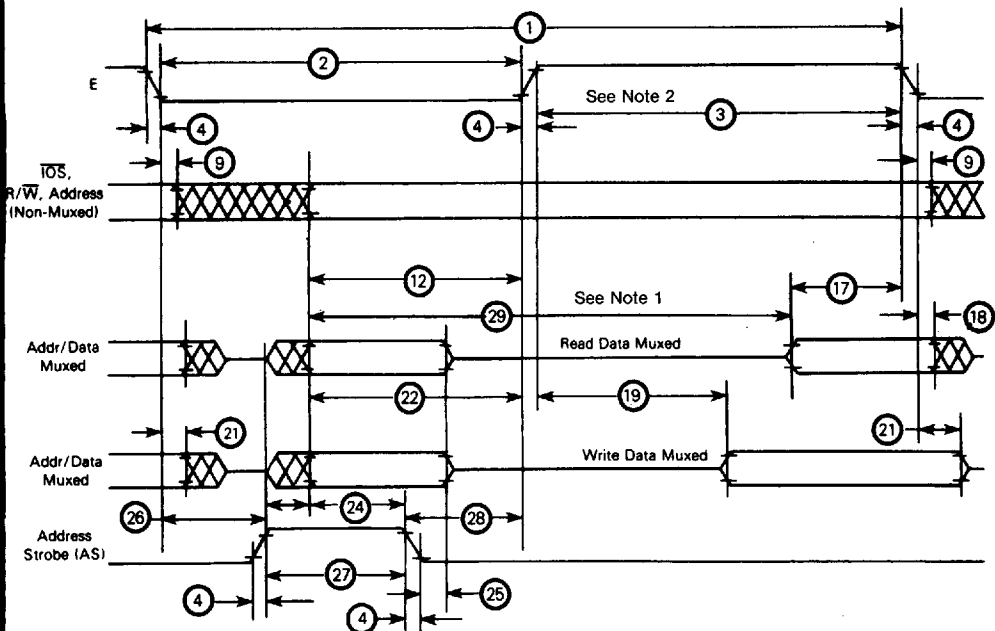
Note 1 : Voltage levels shown are $V_L \leq 0.5 \text{ V}$, $V_H \geq 2.4 \text{ V}$, unless otherwise specified.

Note 2 : Measurement points shown are 0.8 V and 2.0 V, unless otherwise specified.

Note 3 : At specified cycle time.

* t_{ASD} parameters listed assume external TTL clock drive with 50% \pm 5% duty cycle. Devices driven by an external TTL clock with 50% \pm 1% duty cycle or which use a crystal have the following t_{ASD} specifications : 100 ns min (1.0 MHz devices), 65 ns min (1.5 MHz devices), 50 ns min (2 MHz devices).





Note 1 : Usable access time is computed by $12 + 3 \cdot 17 + 4$.
 Note 2 : Memory devices should be enabled only during E high to avoid Port 3 bus contention.

Figure 4 : Bus timing.

Table 7 - Mode programming (refer to Figure 5)

$V_{CC} = 5.0 V \pm 5\%$; $V_{SS} = 0$; $f = 1$ and 1.5 MHz : for V and M suffix
 $f = 2$ MHz : for civil 0-70°C version

| Characteristic | Symbol | Min | Max | Unit |
|--|--------------------|-----|-----|----------|
| Mode Programming Input Voltage Low* | V _{MPL} | — | 1.8 | V |
| Mode Programming Input Voltage High | V _{MPH} | 4.0 | — | V |
| Mode Programming Diode Differential (If Diodes are Used) | V _{MPOD} | 0.6 | — | V |
| RESET Low Pulse Width | P _{WRSTL} | 3.0 | — | E-Cycles |
| Mode Programming Setup Time | t _{MPS} | 2.0 | — | E-Cycles |
| Mode Programming Hold Time | t _{MPH} | 0 | — | ns |
| RESET Rise Time $\geq 1 \mu s$ | | 100 | — | |
| RESET Rise Time $< 1 \mu s$ | | | — | |

*For $T_A = -40^\circ C$ to $+105^\circ C$, $V_{MPL} = 1.7 V$.

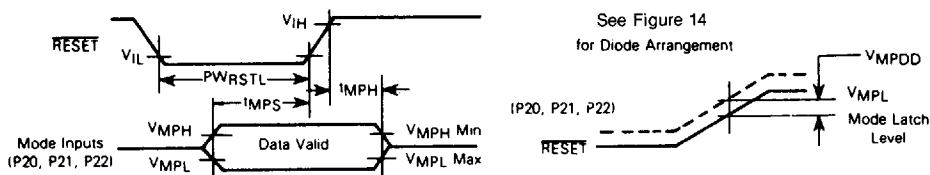


Figure 5 : Mode programming timing.

5.4 - Test conditions specific to the device

5.4.1 - Loading network

Figures 6 and 7 here below show the loading network applicable to the previous timing tables.

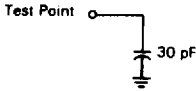
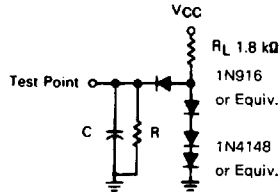


Figure 6 : CMOS load.



C = 90 pF for P30-P37, P40-P47, E, SC1, SC2
 = 30 pF for P10-P17, P20-P24
 R = 37 kΩ for P40-P47, E, SC1, SC2
 = 24 kΩ for P10-P17, P20-P24
 = 24 kΩ for P30-P37

Figure 7 : Timing test load ports 1, 2, 3, 4.

6 - FUNCTIONAL DESCRIPTION

6.1 - Introduction

The EF 6803 microprocessor unit (MPU) is an enhanced EF 6800 MPU with additional capabilities and greater throughput. It is upward source and object code compatible with the EF 6800. The programming model is depicted in Figure 8, where Accumulator D is a concatenation of Accumulators A and B. A list of new operations added to the 6800 instruction set are shown in Table 8.

The EF 6803 can be considered 6801 that operates in Modes 2 and 3 Only.

The 6801 is an 8-bit monolithic microcomputer which can be configured to function in a wide variety of applications. The facility which provides this extraordinary flexibility is its ability to be hardware programmed into eight different operating modes. The operating mode controls the configuration of 18 of the 40 MCU pins, available on-chip resources, memory map, location (internal or external) of interrupt vectors, and type of external bus. The configuration of the remaining 22 pins is not dependent on the operating mode.

Twenty-nine pins are organized as three 8-bit ports and one 5-bit port. Each port consists of at least a Data Register and a write-only Data Direction Register. The Data Direction Register is used to define whether corresponding bits in the Data Register are configured as an input (clear) or output (set).

The term «port», by itself, refers to all of the hardware associated with the port. When the port is used as a «data port» or «I/O port», it is controlled by the port Data Direction Register and the programmer has direct access to the port pins using the port Data Register. Port pins are labeled as Pij where i identifies one of four ports and j indicates the particular bit.

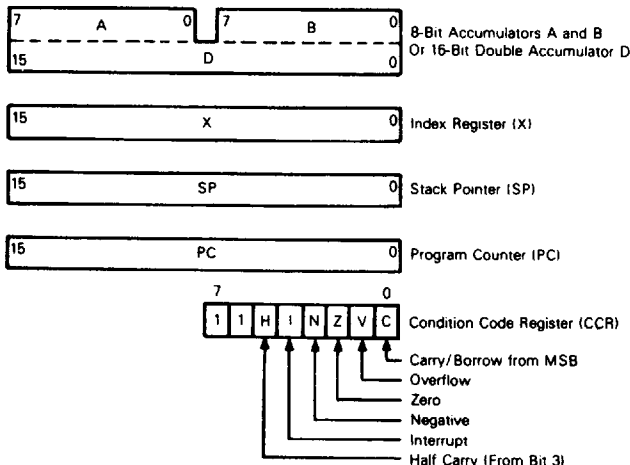


Figure 8 : Programming model.

2 - 6801/6803 operating modes

The 6801 provides eight different operating modes (Modes 0 through 7), the EF 6803 provides two operating modes (Modes 2 and 3). The operating modes are hardware selectable and determine the device memory map, the configuration of Port 3, Port 4, SC1, SC2, and the physical location of the interrupt vectors.

2.1 - Fundamental modes

The eight operating modes can be grouped into three fundamental modes which refer to the type of bus it supports: Single Chip, Expanded Non-Multiplexed, and Expanded Multiplexed. Single chip modes include 4 and 7, Expanded Non-Multiplexed in Mode 5 and the remaining five are Expanded Multiplexed modes. Table 9 summarizes the characteristics of the operating modes.

2.1.1 - 6801 Single-Chip Modes (4,7)

In the Single-Chip Mode, the four MCU ports are configured as parallel input/output data ports, as shown in Figure 9. The MCU functions as a monolithic microcomputer in these two modes without external address or data buses. A maximum of 29 I/O lines and two Port 3 control lines are provided. Peripherals or another MCU can be interfaced to Port 3 in a loosely coupled dual processor configuration, as shown in Figure 10.

Table 8 - New instructions

| Instruction | Description |
|--------------|---|
| ABX | Unsigned addition of Accumulator B to Index Register |
| ADDD | Adds (without carry) the double accumulator to memory and leaves the sum in the double accumulator |
| ASLD or LSLD | Shifts the double accumulator left (towards MSB) one bit; the LSB is cleared and the MSB is shifted into the C-bit |
| BHS | Branch if Higher or Same; unsigned conditional branch (same as BCC) |
| BLO | Branch if Lower; Unsigned conditional branch (same as BCS) |
| BRN | Branch Never |
| JSR | Additional addressing mode: direct |
| LDD | Loads double accumulator from memory |
| LSL | Shifts memory or accumulator left (towards MSB) one bit; the LSB is cleared and the MSB is shifted into the C-bit (same as ASL) |
| LSRD | Shifts the double accumulator right (towards LSB) one bit; the MSB is cleared and the LSB is shifted into the C-bit |
| MUL | Unsigned multiply; multiplies the two accumulators and leaves the product in the double accumulator |
| PSHX | Pushes the Index Register to stack |
| PULX | Pulls the Index Register from stack |
| STD | Stores the double accumulator to memory |
| SUBD | Subtracts memory from the double accumulator and leaves the difference in the double accumulator |
| CPX | Internal processing modified to permit its use with any conditional branch instruction |

In Single-Chip Test Mode (4), the RAM responds to \$XX80 through \$XXFF and the ROM is removed from the internal address map. A test program must first be loaded into the RAM using modes 0, 1, 2, or 6. If the MCU is Reset and then programmed into Mode 4, execution will begin at \$XXFE:XXFF. Mode 5 can be irreversibly entered from Mode 4 without asserting RESET by setting bit 5 of the Port 2 Data Register. This mode is used primarily to test Ports 3 and 4 in the Single-Chip and Non-Multiplexed Modes.

2.1.2 - 6801 expanded Non-Multiplexed Mode (5)

A modest amount of external memory space is provided in the Expanded Non-Multiplexed Mode while significant on-chip resources are retained. Port 3 functions as an 8-bit bidirectional data bus and Port 4 is configured initially as an input data port. Any combination of the eight least-significant address lines may be obtained by writing to the Port 4 Data Direction Register. Stated alternatively, any combination of A0 to A7 may be provided while retaining the remainder as input data lines. Internal pullup resistors pull the Port 4 lines high until the port is configured.

Figure 11 illustrates a typical system configuration in the Expanded Non-Multiplexed Mode. The MCU interfaces directly with 800 family parts and can access 256 bytes of external address space at \$100 through \$1FF. IOS provides an address decode of external memory (\$100-\$1FF) and can be used as a memory page select or chip select line.

Table 9 - Summary of 6801/6803 operating modes

| |
|--|
| Common to all modes : Reserved register area Port 1 Port 2 Programmable timer Serial communications interface |
| Single chip mode 7 (6801 only) 128 bytes of RAM ; 2048 bytes of ROM Port 3 is a parallel I/O with two control lines Port 4 is a parallel I/O port SC1 is input strobe 3 (IS3) SC2 is output strobe 3 (OS3) |
| Expanded non-multiplexed mode 5 (6801 only) 128 bytes of RAM ; 2048 bytes of ROM 256 bytes of external memory space Port 3 is an 8-bit data bus Port 4 is an input port/address bus SC1 is input/output select (IOS) SC2 is read/write (R/W) |
| Expanded multiplexed modes 1, 2, 3, 6 - see Note Four memory space options (64 K address space) : (1) No internal RAM or ROM (mode 3) (2) Internal RAM, no ROM (mode 2) (3) Internal RAM and ROM (mode 1) (4) Internal RAM, ROM with partial address bus (mode 6) Port 3 is a multiplexed address / data bus Port 4 is an address bus (input/address in mode 6) SC1 is address strobe (AS) SC2 is read/write (R/W) |
| Test modes 0 and 4 (6801 only) Expanded multiplexed test mode 0 May be used to test RAM and ROM Single chip and non-multiplexed test mode 4 (1) May be changed to mode 5 without going through reset (2) May be used to test Ports 3 and 4 as I/O ports |
| Note : The EF 6803 operates only in modes 2 and 3. |

6.2.1.3 - Expanded-Multiplexed Modes (0, 1, 2, 3, 6)*

A 64 K byte memory space is provided in the expanded multiplexed modes. In each of the expanded multiplexed modes Port 3 functions as a time multiplexed address/data bus with address valid on the negative edge of Address Strobe (AS), and data valid while E is high. In Modes 0 to 3, Port 4 provides address lines A8 to A15. In Mode 6, however, Port 4 initially is configured at RESET as an input data port. The port 4 Data Direction Register can then be changed to provide any combination of address lines, A8 to A15. Stated alternatively, any subset of A8 to A15 can be provided while retaining the remaining port 4 lines as input data lines. Internal pullup resistors pull the Port 4 lines high until software configures the port.

In Mode 0, the Reset vector is external for the first two E-cycles after the positive edge of RESET, and internal thereafter. In addition, the internal and external data buses are connected so there must be no memory map overlap in order to avoid potential bus conflicts. Mode 0 is used primarily to verify the ROM pattern and monitor the internal data bus with the automated test equipment.

Only the 6801 can operate in each of the expanded multiplexed modes. The EF 6803 operates only in Modes 2 and 3.

Figure 12 depicts a typical configuration for the Expanded-Multiplexed Modes. Address Strobe can be used to control a transparent D-type latch to capture address A0-A7, as shown in Figure 13. This allows Port 3 to function as a Data Bus when E is high.



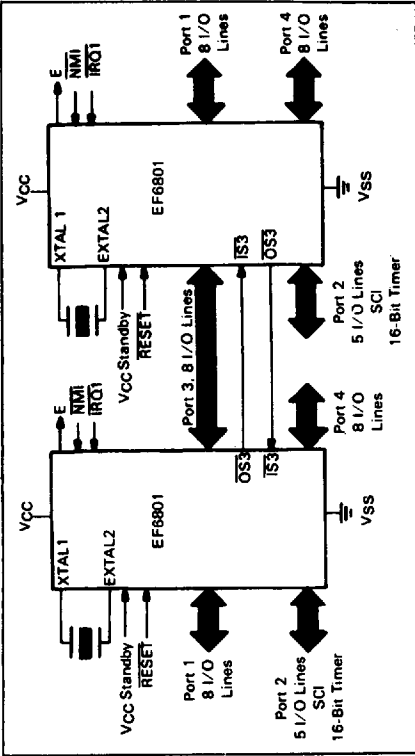


Figure 9 : Single-chip mode.

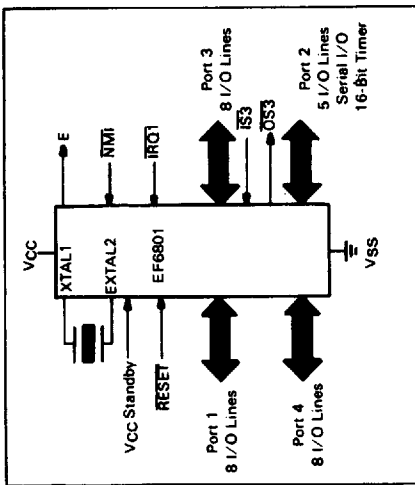


Figure 10 : Single-chip dual processor configuration.

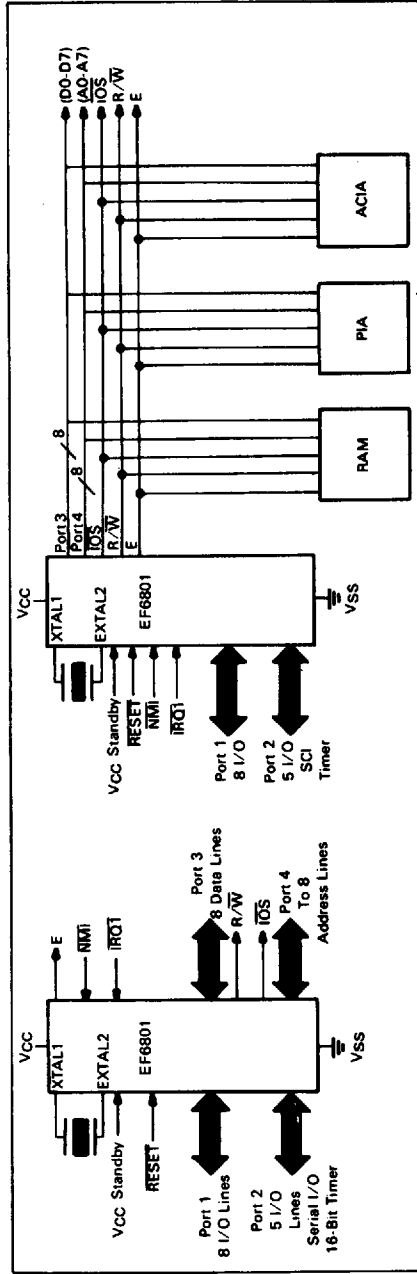


Figure 11 : Expanded non-multiplexed configuration.

6.2.2 - Programming the mode

The operating mode is determined at RESET by the levels asserted on P22, P21, and P20. These levels are latched into PC2, PC1, and PC0 of the program control register on the positive edge of RESET. The operating mode may be read from the Port 2 Data Register as shown below, and programming levels and timing must be met as shown in Figure 4. A brief outline of the operating mode is shown in Table 10.

PORT 2 DATA REGISTER

| | | | | | | | | |
|-----|-----|-----|-----|-----|-----|-----|-----|--------|
| 7 | 6 | 5 | 4 | 3 | 2 | 1 | 0 | |
| PC2 | PC1 | PC0 | P24 | P23 | P22 | P21 | P20 | \$0003 |

Circuitry to provide the programming levels is dependent primarily on the normal system usage of the three pins. If configured as output, the circuit shown in Figure 14 may be used ; otherwise, three-state buffers can be used to provide isolation while programming the mode.

Table 10 - Mode selection summary

| Mode* | P22 PC2 | P21 PC1 | P20 PC0 | ROM | RAM | Interrupt Vectors | Bus Mode | Operating Mode |
|-------|------------|------------|------------|------------------|------------------|----------------------|------------------------|--------------------------------|
| 7 | H | H | H | I | I | I | I | Single Chip |
| 6 | H | H | L | I | I | I | MUX ^(5, 6) | Multiplexed/Partial Decode |
| 5 | H | L | H | I | I | I | NMUX ^(5, 6) | Non-Multiplexed/Partial Decode |
| 4 | H | L | L | I ⁽²⁾ | I ⁽¹⁾ | I | I | Single Chip Test |
| 3 | L | H | H | E | E | E | MUX ⁽⁴⁾ | Multiplexed/No RAM or ROM |
| 2 | L | H | L | E | I | E | MUX ⁽⁴⁾ | Multiplexed/RAM |
| 1 | L | L | H | I | I | E | MUX ⁽⁴⁾ | Multiplexed/RAM & ROM |
| 0 | L | L | L | I | I | I ⁽³⁾ | MUX ⁽⁴⁾ | Multiplexed Test |

Legend:

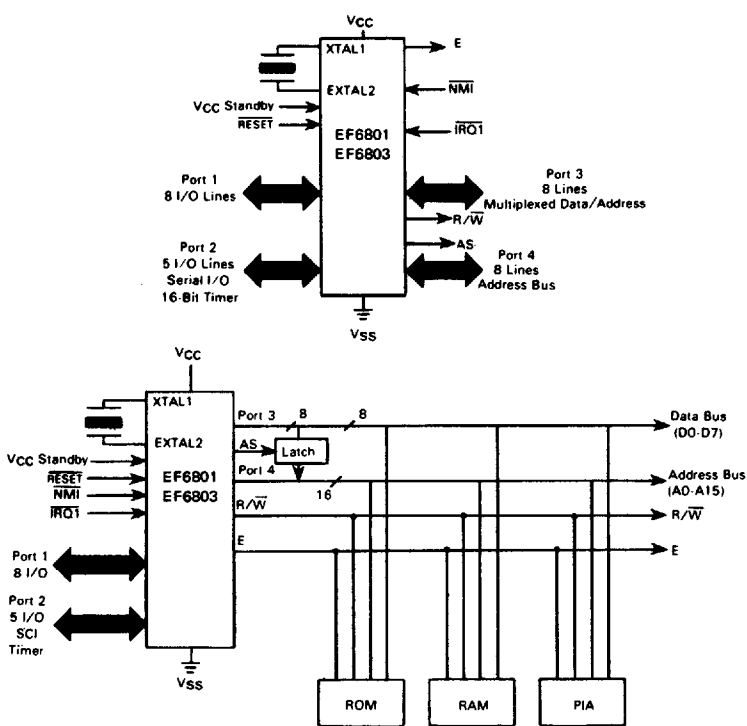
- I — Internal
- E — External
- MUX — Multiplexed
- NMUX — Non-Multiplexed
- L — Logic "0"
- H — Logic "1"

Notes:

- (1) Internal RAM is addressed at \$XX80
- (2) Internal ROM is disabled
- (3) RESET vector is external for 2 cycles after RESET goes high
- (4) Addresses associated with Ports 3 and 4 are considered external in Modes 0, 1, 2, and 3
- (5) Addresses associated with Port 3 are considered external in Modes 5 and 6
- (6) Port 4 default is user data input. address output is optional by writing to Port 4 Data Direction Register

*The EF6803 operates only in Modes 2 and 3





NOTE: To avoid data bus (Port 3) contention in the expanded multiplexed modes, memory devices should be enabled only during E high time.

Figure 12: Expanded multiplexed configuration.

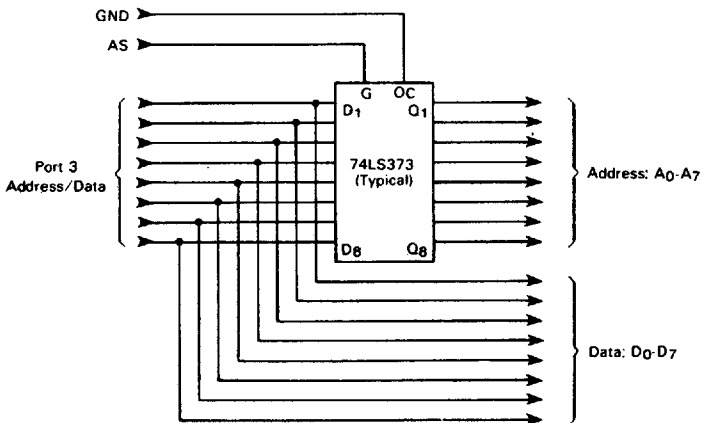
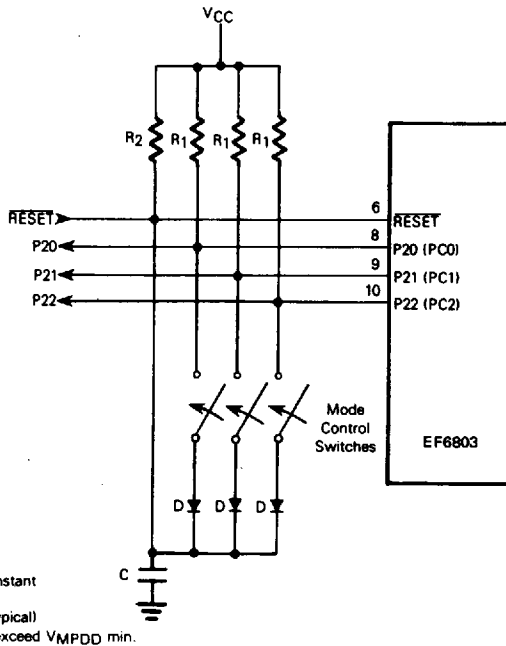


Figure 13: Typical latch arrangement.



Notes:

1. Mode 7 as shown
2. $R_2 \cdot C =$ Reset time constant
3. $R_1 = 10\text{ k}$ (typical)
4. $D = 1N914, 1N4001$ (typical)
5. Diode V_f should not exceed $V_{MPDD\text{ min}}$.

Figure 14: Typical mode programming circuit.

6.2.3 - Memory maps

The 6801 family can provide up to 64 K byte address space depending on the operating mode. A memory map for each operating mode is shown in Figure 15.

The first 32 locations of each map are reserved for the internal register area, as shown in Table 11, with exceptions as indicated.

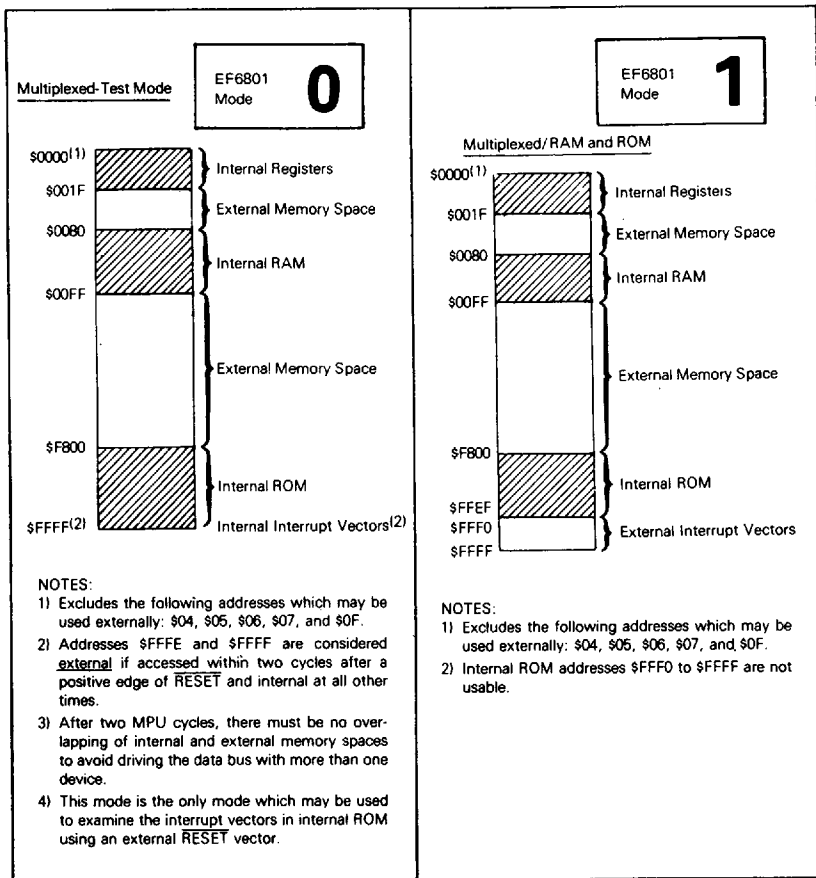


Figure 15: 6801/6803 memory maps (sheet 1 of 3).

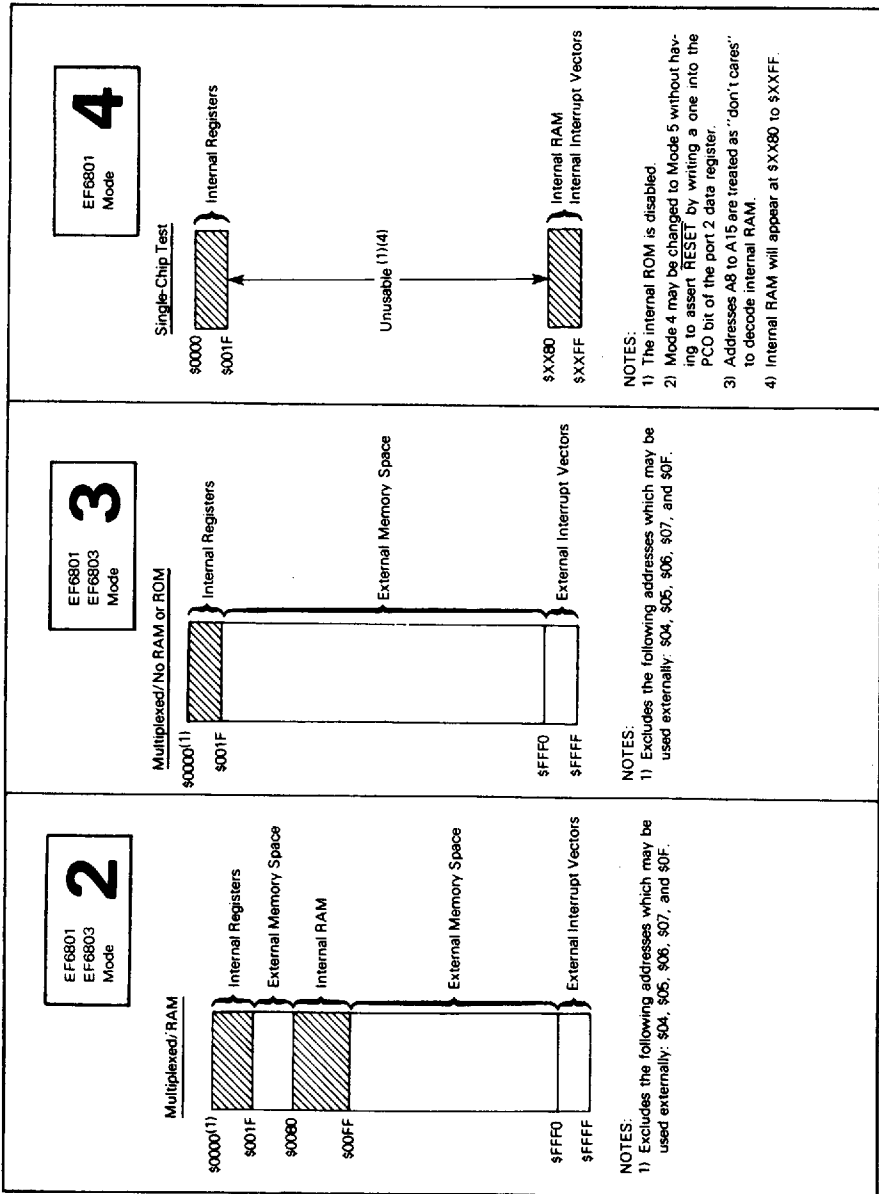
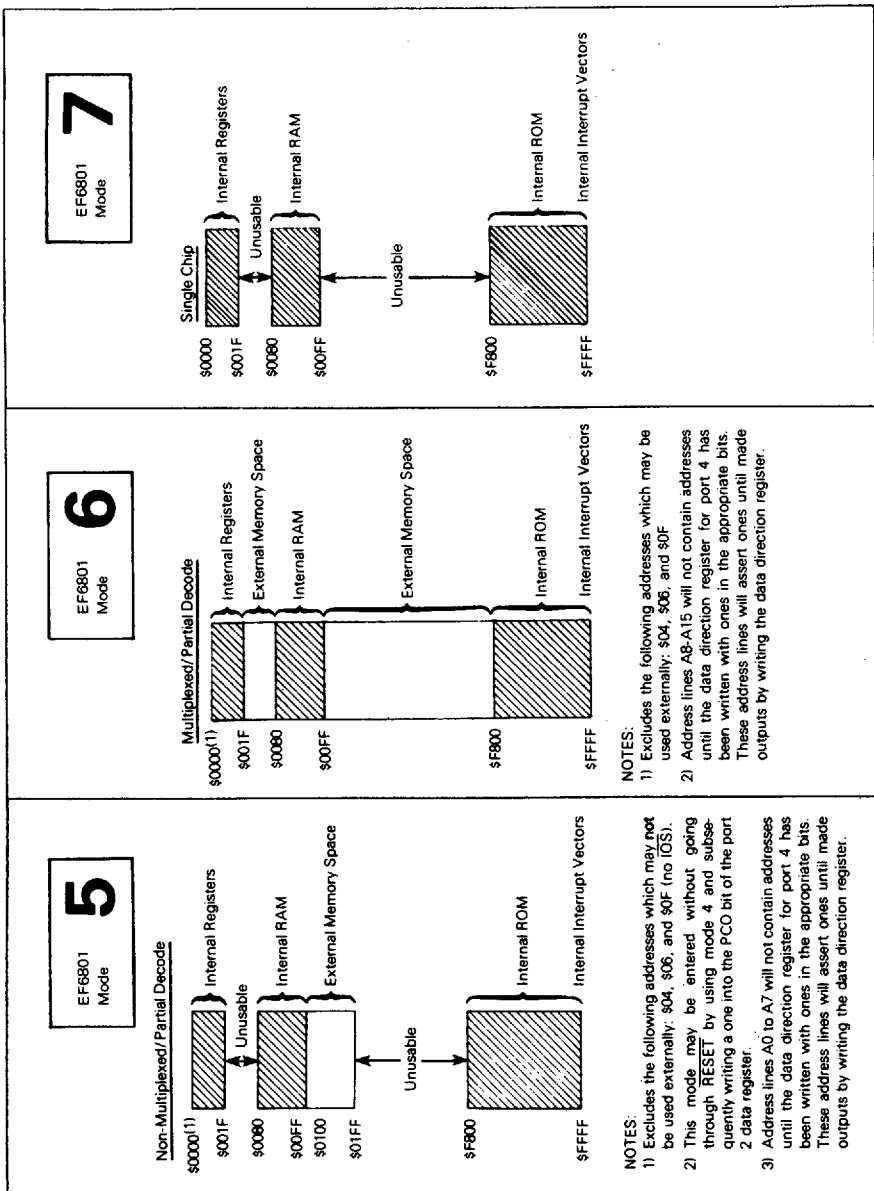


Figure 15 : 6801/6803 memory maps (sheet 2 of 3).



NOTES:

- 1) Excludes the following addresses which may be used externally: \$04, \$06, and \$0F
- 2) Address lines A8-A15 will not contain addresses until the data direction register for port 4 has been written with ones in the appropriate bits. These address lines will assert ones until made outputs by writing the data direction register.

NOTES:

- 1) Excludes the following addresses which may not be used externally: \$04, \$06, and \$0F (no I/O).
- 2) This mode may be entered without going through RESET by using mode 4 and subsequently writing a one into the PCO bit of the port 2 data register.
- 3) Address lines A0 to A7 will not contain addresses until the data direction register for port 4 has been written with ones in the appropriate bits. These address lines will assert ones until made outputs by writing the data direction register.

Figure 15 : 6801/6803 memory maps (sheet 3 of 3).

6.3 - 6801/6803 Interrupts

The 6801 Family supports two types of interrupt requests : maskable and non-maskable. A Non-Maskable interrupt (NMI) is always recognized and acted upon at the completion of the current instruction. Maskable interrupts are controlled by the Condition Code Register I-bit and by individual enable bits. The I-bit controls all maskable interrupts. Of the maskable interrupts, there are two types : IRQ1 and IRQ2. The Programmable Timer and Serial Communications Interface use an internal IRQ2 interrupt line, as shown in Figure 1. External devices (and IS3) use IRQ1. An IRQ1 interrupt is serviced before IRQ2 if both are pending.

All IRQ2 interrupts use hardware prioritized vectors. The single SCI interrupt and three timer interrupts are serviced in a prioritized order and each is vectored to a separate location. All interrupt vector locations are shown in Table 12.

The Interrupt flowchart is depicted in Figure 16 and is common to every interrupt excluding reset. During interrupt servicing the Program Counter, Index Register, A Accumulator, B Accumulator, and Condition Code Register are pushed to the stack. The I-bit is set to inhibit maskable interrupts and a vector is fetched corresponding to the current highest priority interrupt. The vector is transferred to the Program Counter and instruction execution is resumed. Interrupt and RESET timing are illustrated in Figures 17 and 18.

6.4 - Functional pin descriptions

VCC and VSS

VCC and VSS provide power to a large portion of the MCU. The power supply should provide +5 volts ($\pm 5\%$) to VCC, and VSS should be tied to ground. Total power dissipation (including VCC Standby), will not exceed PD milliwatts.

VCC Standby

VCC Standby provides power to the standby portion (\$80 through \$BF) of the RAM and the STBY PWR and RAME bits of the RAM Control Register. Voltage requirements depend on whether the device is in a powerup or powerdown state. In the power-up state, the power supply should provide +5 volts ($\pm 5\%$) and must reach VSB (min) before RESET reaches 4.0 volts. During powerdown, VCC standby must remain above VSB (min) to sustain the standby RAM and STBY PWR bit. While in powerdown operation, the standby current will not exceed ISBB.

It is typical to power both VCC and VCC Standby from the same source during normal operation. A diode must be used between them to prevent supplying power to VCC during powerdown operation. VCC Standby should be tied to ground in Mode 3.

Table 11 - Internal register area

| Register | Address |
|--|---------|
| Port 1 Data Direction Register*** | 00 |
| Port 2 Data Direction Register*** | 01 |
| Port 1 Data Register | 02 |
| Port 2 Data Register | 03 |
| Port 3 Data Direction Register*** | 04* |
| Port 4 Data Direction Register*** | 05** |
| Port 3 Data Register | 06* |
| Port 4 Data Register | 07** |
| Timer Control and Status Register | 08 |
| Counter (High Byte) | 09 |
| Counter (Low Byte) | 0A |
| Output Compare Register (High Byte) | 0B |
| Output Compare Register (Low Byte) | 0C |
| Input Capture Register (High Byte) | 0D |
| Input Capture Register (Low Byte) | 0E |
| Port 3 Control and Status Register | 0F* |
| Rate and Mode Control Register | 10 |
| Transmit/Receive Control and Status Register | 11 |
| Receive Data Register | 12 |
| Transmit Data Register | 13 |
| RAM Control Register | 14 |
| Reserved | 15-1F |

*External addresses in Modes 0, 1, 2, 3, 5, 6; cannot be accessed in Mode 5 (No IOS)

**External addresses in Modes 0, 1, 2, 3

***1 = Output, 0 = Input

Table 12 - MCU interrupt vector locations

| MSB | LSB | Interrupt |
|------|------|-----------------------------|
| FFFE | FFFF | RESET |
| FFFC | FFFD | NMI |
| FFFA | FFFB | Software Interrupt (SWI) |
| FFF8 | FFF9 | IRQ1 (or IS3) |
| FFF6 | FFF7 | ICF (Input Capture)* |
| FFF4 | FFF5 | OCF (Output Compare)* |
| FFF2 | FFF3 | TOF (Timer Overflow)* |
| FFF0 | FFF1 | SCI (IRDRF + ORFE + TDREJ)* |

*IRQ2 Interrupt



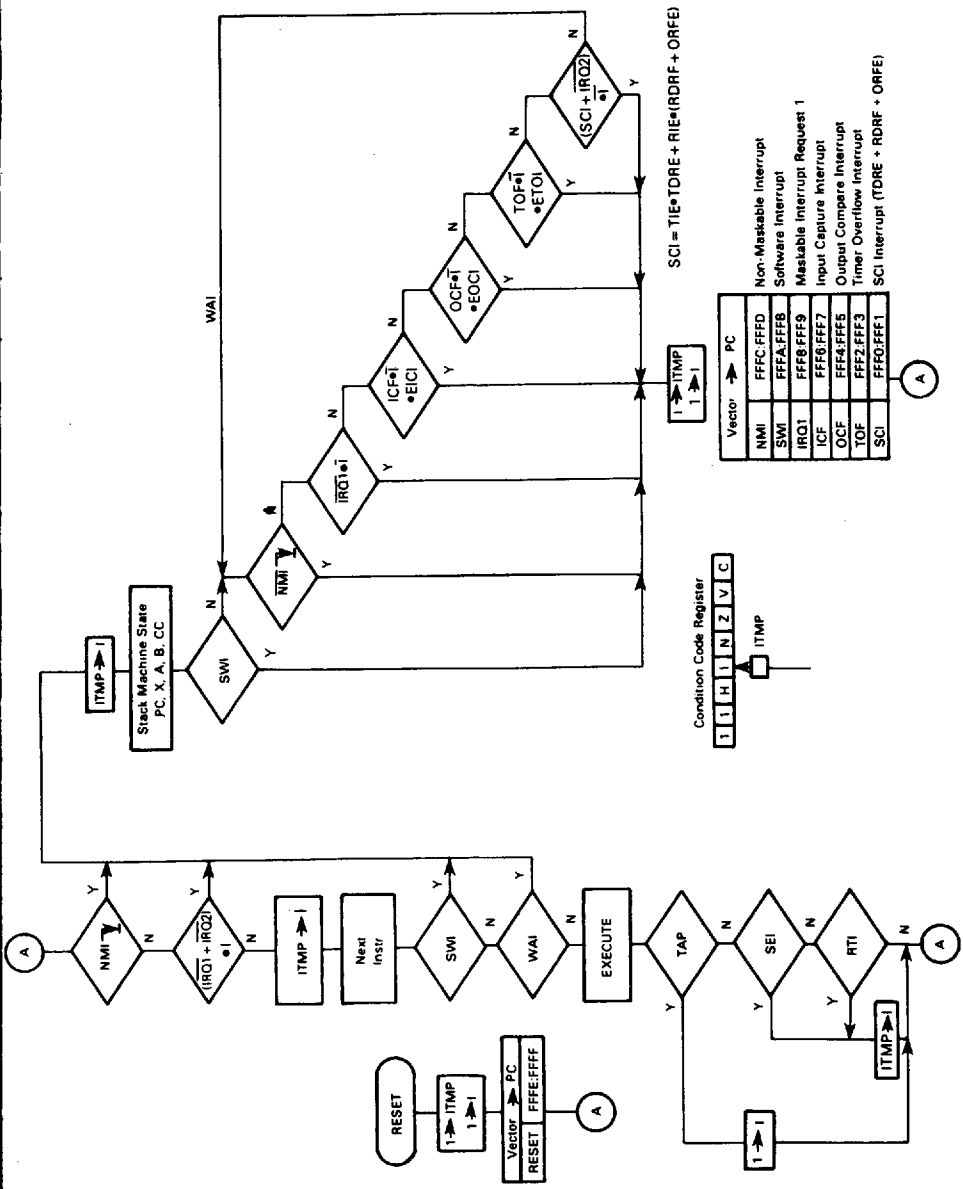


Figure 16 - Interrupt flowchart.

XTAL1 and XTAL2

These two input pins interface either a crystal or TTL compatible clock to the MCU internal clock generator. Divide-by-four circuitry is included which allows use of the inexpensive 3.58 MHz or 4.4336 MHz Color Burst TV crystals. A 20 pF capacitor should be tied from each crystal pin to ground to ensure reliable startup and operation. Alternatively, XTAL2 may be driven by an external TTL compatible clock at $4f_0$ with a duty cycle of 50 % (± 5 %) with XTAL1 connected to ground.

The internal oscillator is designed to interface with an AT-cut quartz crystal resonator operated in parallel resonance mode in the frequency range specified for f_{XTAL} . The crystal should be mounted as close as possible to the input pins to minimize output distortion and startup stabilization time*. The MCU is compatible with most commercially available crystals. Nominal crystal parameters are shown in Figure 19.

RESET

This input is used to reset the internal state of the device and provide an orderly startup procedure. During powerup, **RESET** must be held below 0.8 volts : (1) at least t_{RC} after V_{CC} reaches 4.75 volts in order to provide sufficient time for the clock generator to stabilize, and (2) until V_{CC} Standby reaches 4.75 volts. **RESET** must be held low for at least three E-cycles if asserted during powerup operation.

E (Enable)

This is an output clock used primarily for bus synchronization. It is TTL compatible and is the slightly skewed divide-by-four result of the device input clock frequency. It will drive one Schottky TTL load and 90 pF, and all data given in cycles is referenced to this clock unless otherwise noted.

NMI (Non-Maskable-Interrupt)

An NMI negative edge requests an MCU interrupt sequence, but the current instruction will be completed before it responds to the request. The MCU will then begin an interrupt sequence. Finally, a vector is fetched from \$FFF8 and \$FFF9, transferred to the Program Counter and instruction execution is resumed. NMI typically requires a 3.3 k Ω (nominal) resistor to V_{CC} . There is no internal NMI pullup resistor. NMI must be held low for at least one E-cycle to be recognized under all conditions.

IRQ1 (Maskable interrupt request 1)

IRQ1 is a level-sensitive input which can be used to request an interrupt sequence. The MPU will complete the current instruction before it responds to the request. If the interrupt mask bit (I-bit) in the Condition Code Register is clear, the MCU will begin an interrupt sequence. A vector is fetched from \$FFF8 and \$FFF9, transferred to the Program Counter, and instruction execution is resumed.

IRQ1 typically requires an external 3.3 k Ω (nominal) resistor to V_{CC} for wire-OR applications. $\overline{IRQ1}$ has no internal pullup resistor.

SC1 and SC2 (strobe control 1 and 2)

The function of SC1 and SC2 depends on the operating mode. SC1 is configured as an output in all modes except single chip mode, whereas SC2 is always an output. SC1 and SC2 can drive one Schottky load and 90 pF.

SC1 and SC2 in Single-Chip Mode

In Single-Chip Mode, SC1 and SC2 are configured as an input and output, respectively, and both function as Port 3 control lines. SC1 functions as IS3 and can be used to indicate that Port 3 input data is ready or output data has been accepted. Three options associated with IS3 are controlled by Port 3 Control and Status Register and are discussed in the Port 3 description. If unused, IS3 can remain unconnected.

SC2 is configured as OS3 and can be used to strobe output data or acknowledge input data or acknowledge input data. It is controlled by Output Strobe Select (OSS) in the Port 3 Control and Status Register. The strobe is generated by a read (OSS = 0) or write (OSS = 1) to the Port 3 Data Register.

SC1 and SC2 in Expanded Non-Multiplexed Mode

In the Expanded Non-Multiplexed Mode, both SC1 and SC2 are configured as outputs. SC1 functions as Input/Output Select (IOS) and is asserted only when \$0100 through \$01FF is sensed on the internal address bus.

SC2 is configured as Read/Write and is used to control the direction of data bus transfers. An MPU read is enabled when Read/Write and E are high.

SC1 and SC2 in Expanded Multiplexed Mode

In the Expanded Multiplexed Modes, both SC1 and SC2 are configured as outputs. SC1 functions as Address Strobe and can be used to demultiplex the eight least significant addresses and the data bus. A latch controlled by Address Strobe captures address on the negative edge, as shown in Figure 13.

SC2 is configured as Read/Write and is used to control the direction of data bus transfers. An MPU read is enabled when Read/Write and E are high.

P10-P17 (Port 1)

Port 1 is a mode independent 8-bit I/O port with each line an input or output as defined by the Port 1 Data Direction Register. The TTL compatible three-state output buffers can drive one Schottky TTL load and 30 pF, Darlington transistors, or CMOS devices using external pullup resistors. It is configured as a data input port by **RESET**. Unused lines can remain unconnected.

P20-P24 (Port 2)

Port 2 is a mode-independent, 5-bit, multipurpose I/O port. The voltage levels present on P20, P21, and P22 on the rising edge of **RESET** determine the operating mode of the MCU. The entire port is then configured as a data input port. The Port 2 lines can be selectively configured as a data output lines by setting the appropriate bits in the Port 2 Data Direction Register. The Port 2 Data Register is used to move data through the port. However, if P21 is configured as an output, it will be tied to the timer Output Compare function and cannot be used to provide output from the Port 2 Data Register.

Port 2 can also be used to provide an interface for the Serial Communications Interface and the timer Input Edge function. These configurations are described in the Programmable Timer and Serial Communications Interface (SCI) section.

The Port 2 three-state, TTL-compatible output buffers are capable of driving one Schottky TTL load and 30 pF, or CMOS devices using external pullup resistors.

PORT 2 DATA REGISTER

| | | | | | | | | |
|-----|-----|-----|-----|-----|-----|-----|-----|--------|
| 7 | 6 | 5 | 4 | 3 | 2 | 1 | 0 | |
| PC2 | PC1 | PC0 | P24 | P23 | P22 | P21 | P20 | \$0003 |

(a) Nominal Recommended Crystal Parameters

| Nominal Crystal Parameters* | | | | | |
|-----------------------------|----------|----------|--------------|--------------|--------------|
| | 3.58 MHz | 4.00 MHz | 5.0 MHz | 6.0 MHz | 8.0 MHz |
| RS | 60 Ω | 50 Ω | 30-50 Ω | 30-50 Ω | 20-40 Ω |
| C ₀ | 3.5 pF | 6.5 pF | 4-6 pF | 4-6 pF | 4-6 pF |
| C ₁ | 0.015 pF | 0.025 pF | 0.01-0.02 pF | 0.01-0.02 pF | 0.01-0.02 pF |
| Q | > 40 K | > 30 K | > 20 K | > 20 K | > 20 K |

*NOTE: These are representative AT-cut crystal parameters only. Crystals of other types of cut may also be used.

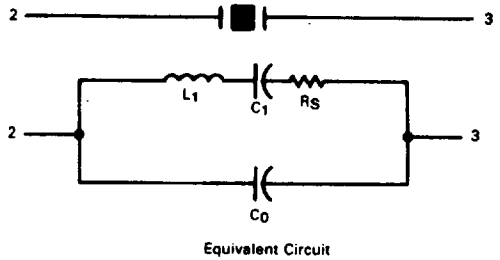
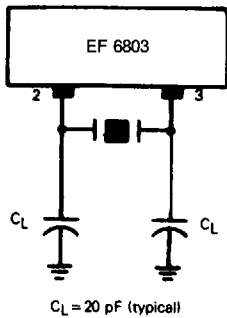


Figure 19 : 6801/6803 oscillator characteristics
a) Nominal recommended crystal parameters.

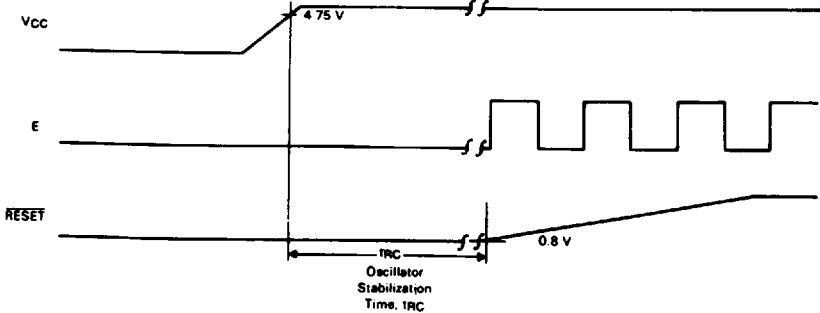


Figure 19 : 6801/6803 oscillator characteristics
b) Oscillator stabilization time (TRC).

P30-P37 (Port 3)

Port 3 can be configured as an I/O port, a bidirectional 8-bit data bus, or a multiplexed address/data bus depending on the operating mode. The TTL compatible three-state output buffers can drive on Schottky TTL load and 90 pF. Unused lines can remain unconnected.

Port 3 In Single-Chip Mode

Port 3 is an 8-bit I/O port in the Single-Chip Mode, with each line configured by the Port 3 Data Direction Register. There are also two lines, IS3 and OS3, which can be used to control Port 3 data transfers.

Three Port 3 options are controlled by the Port 3 Control and Status Register and are available only in Single-Chip Mode: (1) Port 3 input data can be latched using IS3 as a control signal, (2) OS3 can be generated by either an MPU read or write to the Port 3 Data Register, and (3) an IRQ1 interrupt can be enabled by an IS3 negative edge.

Port 3 control and status register

| | | | | | | | | |
|-------------|-----------------------|---|-----|-----------------|---|---|---|--------|
| 7 | 6 | 5 | 4 | 3 | 2 | 1 | 0 | \$000F |
| IS3 Flag | IS3 IRQ1 Enable | X | OSS | Latch Enable | X | X | X | |

Bit 0-2 not used.

Bit 3 LATCH ENABLE. This bit controls the input latch for Port 3. If set, input data is latched by an $\overline{IS3}$ negative edge. The latch is transparent after a read of the Port 3 Data Register. LATCH ENABLE is cleared during reset.

Bit 4 OSS (Output Strobe Select). This bit determines whether OS3 will be generated by a read or write of the Port 3 Data Register. When clear, the strobe is generated by a read; when set, it is generated by a write. OSS is cleared during reset.

Bit 5 Not used.

Bit 6 IS3 IRQ1 ENABLE. When set, an $\overline{IRQ1}$ interrupt will be enabled whenever IS3 FLAG is set; when clear, the interrupt is inhibited. This is cleared during reset.

Bit 7 IS3 FLAG. This read-only status bit is set by an $\overline{IS3}$ negative edge. It is cleared by a read of the Port 3 Control and Status Register (with IS3 FLAG set) followed by a read or write to the Port 3 Data Register or during reset.

Port 3 In Expanded Non-Multiplexed Mode

Port 3 is configured as a bidirectional data bus (D7-D0) in the Expanded Non-Multiplexed Mode. The direction of data transfers is controlled by Read/Write (SC2). Data is clocked by E (Enable).

Port 3 In Expanded Multiplexed Mode

Port 3 is configured as a time multiplexed address (A0-A7) and data bus (D7-D0) in the Expanded Multiplexed Modes, where Address Strobe (AS) can be used to demultiplex the two buses. Port 3 is held in a high impedance state between valid address and data to prevent bus conflicts.

P40-P47 (Port 4)

Port 4 is configured as an 8-bit I/O port, as address outputs, or as data inputs depending on the operating mode. Port 4 can drive on Schottky TTL load and 90 pF and is the only port with internal pullup resistors. Unused lines can remain unconnected.

Port 4 In Single-Chip Mode

In Single-Chip Mode, Port 4 functions as an 8-bit I/O port with each line configured by the Port 4 Data Direction Register. Internal pullup resistors allow the port to directly interface with CMOS at 5 volt levels. External pullup resistors to more than 5 volts, however, cannot be used.

Port 4 In Expanded Non-Multiplexed Mode

Port 4 is configured from reset as an 8-bit input port, where the Port 4 Data Direction Register can be written to provide any or all of eight address lines, A0 to A7. Internal pullup resistors pull the lines high until the Port 4 Data Direction Register is configured.

Port 4 In Expanded Multiplexed Mode

In all Expanded Multiplexed modes except Mode 6, Port 4 functions as half of the address bus and provides A8 to A15. In Mode 6, the port is configured from reset as an 8-bit parallel input port, where the Port 4 Data Direction Register can be written to provide any or all of upper address lines A8 to A15. Internal pullup resistors pull the lines high until the Port 4 Data Direction Register is configured, where bit 0 controls A8.

RAM control register (\$14)

The RAM Control Register includes two bits which can be used to control RAM accesses and determine the adequacy of the standby power source during powerdown operation. It is intended that RAME be cleared and STBY PWR be set as part of a powerdown procedure.

6.5 - RAM control register

| | | | | | | | |
|-------------|------|---|---|---|---|---|---|
| 7 | 6 | 5 | 4 | 3 | 2 | 1 | 0 |
| STBY PWR | RAME | X | X | X | X | X | X |

- Bit 0-5 Not used.
- Bit 6 RAME RAM Enable. This read/write bit can be used to remove the entire RAM from the internal memory map. RAME is set (enabled) during reset provided standby power is available on the positive edge of RESET. If RAME is set and not in mode 3, the RAM is clear, any access to a RAM address is external. If RAM is included in the internal map.
- Bit 7 STBY PWR Standby Power. This bit is a read/write status bit which, when once set, remains set as long as V_{CC} standby remains above V_{SBB} (minimum). As long as this bit is set following a period of standby operation, the standby power supply has adequately preserved the data in the standby RAM. If this bit is cleared during a period of standby operation, it indicates that V_{CC} standby had fallen to a level sufficiently below V_{SBB} (minimum) to suspect that data in the standby RAM is not valid. This bit can be set only by software and is not affected during reset.

6.6 - Programmable timer

The programmable timer can be used to perform input waveform measurements while independently generating an output waveform. Pulse widths can vary from several microseconds to many seconds. A block diagram of the timer is shown in Figure 20.

Counter (\$09:0A)

The key timer element is a 16-bit free-running counter which is incremented by E (enable). It is cleared during reset and is read-only with one exception : a write to the counter (\$09) will preset it to \$FFF8. This feature, intended for testing, can disturb serial operations because the counter provides the SCI internal bit rate clock. TOF is set whenever the counter contains all ones.

Output compare register (\$0B:0C)

The output compare register is a 16-bit read/write register used to control an output waveform or provide an arbitrary timeout flag. It is compared with the free-running counter on each E cycle. When a match occurs, OCF is set and OLVL is clocked to an output level register. If port 2, bit 1, is configured as an output, OLVL will appear at P21 and the output compare register and OLVL can then be changed for the next and OLVL is clocked to an output level register. If Port 2, bit 1, is configured as an output, OLVL will appear at P21 and the Output Compare Register and OLVL can then be changed for the next compare. The function is inhibited for one cycle after a write to its high byte (\$0B) to ensure a valid compare. The Output Compare Register is set to \$FFF at RESET.

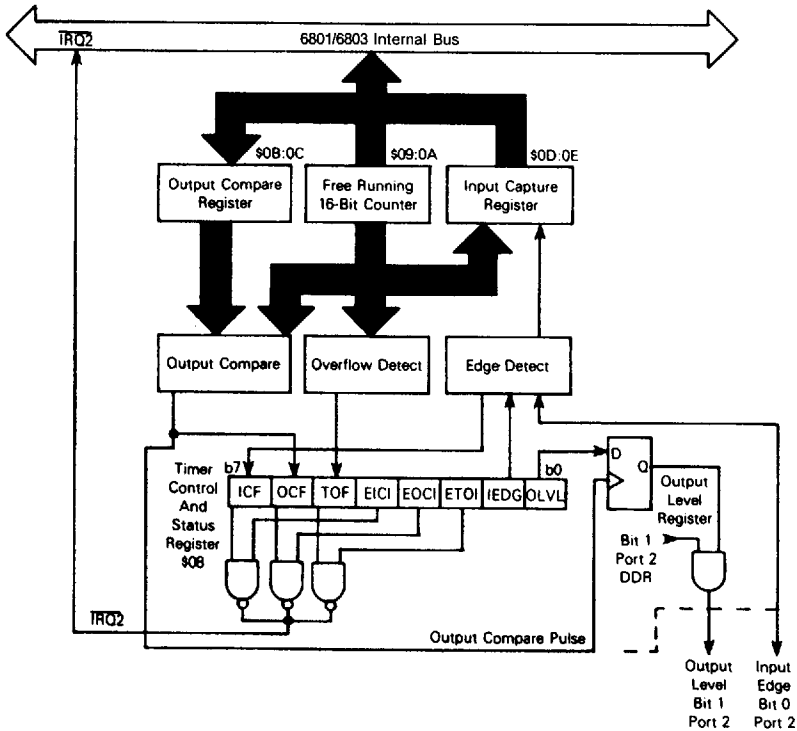


Figure 20 : Block diagram of programmable timer.

Input capture register (\$0D:0E)

The Input Capture Register is a 16-bit read-only register used to store the free-running counter when a «proper» input transition occurs as defined by IEDG. Port 2, bit 0 should be configured as an input, but the edge detect circuit always senses P20 even when configured as an output. An input capture can occur independently of ICF : the register always contains the most current value. Counter transfer is inhibited, however, between accesses of a double byte MPU read. The input pulse width must be at least two E-cycles to ensure an input capture under all conditions.

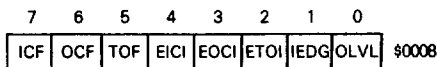
Timer control and status register (\$08)

The Timer Control and Status Register (TCSR) is an 8-bit register of which all bits readable, while only bits 0-4 can be written. The three most significant bits provide the timer status and indicate if :

- a proper level transition has been detected,
- a match has occurred between the free-running counter and the output compare register,
- the free-running counter has overflowed.

Each of the three events can generate an $\overline{IRQ2}$ interrupt and is controlled by an individual enable bit in the TCSR.

Timer Control and Status Register (TCSR)



- Bit 0 OLVL Output level, OLVL is clocked to the output level register by a successful output compare and will appear at P21 if Bit 1 of the Port 2 Data Direction Register is set. It is cleared during reset.
- Bit 1 IEDG Input Edge, IEDG is cleared during reset and controls which level transition will trigger a counter transfer to the Input Capture Register.
IEDG = 0 Transfer on a negative-edge
IEDG = 1 Transfer on a positive-edge.
- Bit 2 ETOI Enable Timer Overflow Interrupt. When set, an $\overline{IRQ2}$ interrupt is enabled for a timer overflow ; when clear, the interrupt is inhibited. It is cleared during reset.
- Bit 3 EOCl Enable Output Compare Interrupt. When set, an $\overline{IRQ2}$ interrupt is enabled for an output compare ; when clear, the interrupt is inhibited. It is cleared during reset.
- Bit 4 EICl Enable Input Capture Interrupt. When set, an $\overline{IRQ2}$ interrupt is enabled for an input capture ; when clear, the interrupt is inhibited. It is cleared during reset.
- Bit 5 TOF Timer Overflow Flag. TOF is set when the counter contains all 1's. It is cleared by reading the TCSR (with TOF set) then reading the counter high byte (\$09), or during reset.
- Bit 6 OCF Output Compare Flag. OCF is set when the Output Compare Register matches the free-running counter. It is cleared by reading the TCSR (with OCF set) and then writing to the Output Compare Register (\$0B or \$0C), or during reset.
- Bit 7 ICF Input Capture Flag. ICF is set to indicate a proper level transition ; it is cleared by reading the TCSR (with ICF set) and then the input Capture Register High Byte (\$0D), or during reset.

5

6.7 - Serial Communications Interface (SCI)

A full-duplex asynchronous Serial Communications Interface (SCI) is provided with two data formats and a variety of rates. The SCI transmitter and receiver are functionally independent, but use the same data format and bit rate. Serial data formats include standard mark/space (NRZ) and Bi-phase and both provide one start bit, eight data bits, and one stop bit. «Baud» and «bit rate» are used synonymously in the following description.

Wake-up feature

In a typical serial loop multi-processor configuration, the software protocol will usually identify the addressee(s) at the beginning of the message. In order to permit uninterested MPU's to ignore the remainder of the message, a wake-up feature is included whereby all further SCI receiver flag (and interrupt) processing can be inhibited until its data line goes idle. An SCI receiver is re-enabled by an idle string of ten consecutive 1's or during reset. Software must provide for the required idle string between consecutive messages and prevent it within messages.

Programmable options

The following features of the SCI are programmable :

- format : standard mark/space (NRZ) or Bi-phase,
- clock : external or internal bit rate clock,
- baud : one of 4 per E-clock frequency, or external clock (x8 desired baud),
- wake-up feature : enabled or disabled,
- interrupt requests : enabled individually for transmitter and receiver,
- clock output : internal bit rate clock enabled or disabled to P22.

Serial communications registers

The Serial Communications Interface includes four addressable registers as depicted in Figure 21. It is controlled by the Rate and Mode Control Register and the Transmit/Receive Control and Status Register. Data is transmitted and received utilizing a write-only Transmit Register and a read-only Receive Register. The shift registers are not accessible to software.

Rate and Mode Control Register (RMCR) (\$10)

The Rate and Mode Control Register controls the SCI bit rate, format, clock source, and under certain conditions, the configuration of P22. The register consists of four write-only bits which are cleared during reset. The two least significant bits control the bit rate of the internal clock and the remaining two bits control the format and clock source.



6.8 - Rate and Mode Control Register (RMCR)

| | | | | | | | | |
|---|---|---|---|-----|-----|-----|-----|--------|
| 7 | 6 | 5 | 4 | 3 | 2 | 1 | 0 | |
| X | X | X | X | CC1 | CC0 | SS1 | SS0 | \$0010 |

Bit 1:Bit 0 SS1:SS0 Speed Select. These two bits select the Baud rate when using the internal clock. Four rates may be selected which are a function of the MCU input frequency. Table 13 lists bit time and rates for three selected MCU frequencies.

Bit 3:Bit 2 CC1:CC0 Clock Control and Format Select. These two bits control the format and select the serial clock source. If CC1 is set, the DDR value for P22 is forced to the complement of CC0 and cannot be altered until CC1 is cleared. If CC1 is cleared after having been set, its DDR value is unchanged. Table 14 defines the formats, clock source, and use of P22.

If both CC1 and CC0 are set, an external TTL compatible clock must be connected to P22 at eight times (8X) the desired bit rate, but not greater than E, with a duty cycle of 50% (± 10%). If CC1:CC0 = 10, the internal bit rate clock is provided at P22 regardless of the values for TE or RE.

Note: The source of SCI internal bit rate clock is the timer free running counter. An MPU write to the counter can disturb serial operations.

Transmit / Receive Control and Status Register (TRCSR) (\$11)

The Transmit / Receive Control and Status Register controls the transmitter, receiver, wake-up feature, and two individual interrupts and monitors the status of serial operations. All eight bits are readable while bits 0 to 4 are also writable. The register is initialized to \$20 by RESET.

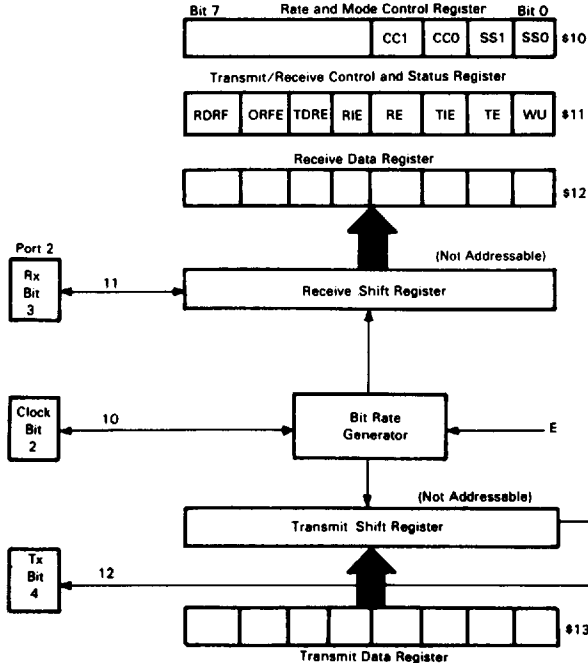
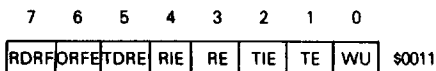


Figure 21 : SCI registers.

9 - Transmit/Receive Control and Status Register (TRCSR)



- Bit 0 WU «Wake-up» on Idle Line. When set, WU enables the wake-up function ; it is cleared by ten consecutive 1's or during reset. WU will not set if the line is idle.
- Bit 1 TE Transmit Enable. When set, P24 DDR bit is set, cannot be changed, and will remain set if TE is subsequently cleared. When TE is changed from clear to set, the transmitter is connected to P24 and a preamble of nine consecutive 1's is transmitted. TE is cleared during reset.
- Bit 2 TIE Transmit Interrupt Enable. When set, an IRQ2 interrupt is enabled when TDRE is set ; when clear, the interrupt is inhibited. TE is cleared during reset.
- Bit 3 RE Receive Enable. When set, the P23 DDR bit is cleared, cannot be changed, and will remain clear if RE is subsequently cleared. While RE is set, the SCI receiver is enabled. RE is cleared during reset.
- Bit 4 RIE Receiver Interrupt Enable. When set, an IRQ2 interrupt is enabled when RDRF and/or ORFE is set ; when clear, the interrupt is inhibited, RIE is cleared during reset.
- Bit 5 TDRE Transmit Data Register Empty. TDRE is set when the Transmit Data Register is transferred to the output serial shift register or during reset. It is cleared by reading the TRCSR (with TDRE set) and then writing to the Transmit Data Register. Additional data will be transmitted only if TDRE has been cleared.
- Bit 6 ORFE Overrun Framing Error. If set, ORFE indicates either an overrun or framing error. An overrun is a new byte ready to transfer to the Receiver Data Register with RDRF still set. A receiver framing error has occurred when the byte boundaries of the bit stream are not synchronized to the bit counter. An overrun can be distinguished from a framing error by the state of RDRF : if RDRF is set, then an overrun has occurred ; otherwise a framing error is transferred to the Receive Data Register in an overrun condition. Unframed data causing a framing error has been detected. Data is not transferred to the Receive Data Register. However, subsequent data transfer is blocked until the framing error flag is cleared*. ORFE is cleared by reading the TRCSR (with ORFE set) then the Receive Data Register, or during reset.
- Bit 7 RDRF Receive Data Register Full. RDRF is set when the input serial shift register is transferred to the Receive Data Register. It is cleared by reading the TRCSR (with RDRF set), and then the Receive Data Register, or during reset.

5

Table 13 - SCI bit times and rates

| SS1:SS0 | | $4f_0 \rightarrow$ | 2.4676 MHz | 4.0 Mhz | 4.9152 MHz |
|-----------------|---|--------------------|--------------------------|--------------------------|--------------------------|
| | | E | 614.4 kHz | 1.0 MHz | 1.2288 MHz |
| 0 | 0 | + 16 | 26 μ s/38,400 Baud | 16 μ s/62,500 Baud | 13.0 μ s/76,800 Baud |
| 0 | 1 | + 128 | 208 μ s/4,800 baud | 128 μ s/7812.5 Baud | 104.2 μ s/9,600 Baud |
| 1 | 0 | + 1024 | 1.67 ms/600 Baud\$ | 1.024 ms/976.6 Baud | 833.3 μ s/1,200 Baud |
| 1 | 1 | + 4096 | 6.67 ms/150 Baud | 4.096 ms/244.1 Baud | 3.33 ms/300 Baud |
| *External (P22) | | | 13.0 μ s/76,800 Baud | 8.0 μ s/125,000 Baud | 6.5 μ s/153,600 Baud |

*Using maximum clock rate

Table 14 - SCI format and clock source control

| CC1:CC0 | Format | Clock Source | Port 2 Bit 2 |
|---------|----------|--------------|--------------|
| 00 | Bi-Phase | Internal | Not Used |
| 01 | NRZ | Internal | Not Used |
| 10 | NRZ | Internal | Output |
| 11 | NRZ | External | Input |

Serial operations

The SCI is initialized by writing control bytes first to the Rate and Mode Control Register and then to the Transmit/Receive Control and Status Register. When TE is set, the output of the transmit serial shift register is connected to P24 and serial output is initiated by transmitting a 9-bit preamble of 1's.

At this point one of two situations exist :

- If the Transmit Data Register is empty (TDRE = 1), a continuous string of 1's will be sent indicating an idle line, or
- if a byte has been written to the Transmit-Data Register (TDRE = 0), it will be transferred to the output serial shift register (synchronized with the bit rate clock), TDRE will be set, and transmission will begin.

The start bit (0), eight data bits (beginning with bit 0) and a stop bit (1), will be transmitted. If TDRE is still set when the next byte transfer should occur, 1's will be sent until more data is provided. In Bi-phase format, the output toggles at the start of each bit and at half-bit time when a «1» is sent. Receive operation is controlled by RE which configures P23 as an input and enables the receiver. SCI data formats are illustrated in Figure 22.

6.10 - Instruction set

The EF 6803 is upward source and object code compatible with the EF 6800. Execution times of key instructions have been reduced and several new instructions have been added, including a hardware multiply. A list of new operations added to the EF 6800 instruction set is shown in Table 8.

In addition, two new special opcodes, 4E and 5E, are provided for test purposes. These opcodes force the Program Counter to increment like a 16-bit counter, causing address lines used in the expanded modes to increment until the device is reset. These opcodes have no mnemonics.

The coding of the first (or only) byte corresponding to an executable is sufficient to identify the instruction and the addressing mode. The hexadecimal equivalents of the binary codes, which result from the translation of the 82 instructions in all valid modes of addressing, are shown in Table 15. There are 220 valid machine codes, 34 unassigned codes, and 2 codes reserved for test purposes.

6.10.1 - Programming model

A programming model for the EF 6803 is shown in Figure 9. Accumulator A can be concatenated with accumulator B and jointly referred to as accumulator D where A is the most significant byte. Any operation which modifies the double accumulator will also modify accumulator A and/or B. Other registers are defined as follows :

Program counter : The program counter is a 16-bit register which always points to the next instruction.

Stack pointer : The stack pointer is a 16-bit register which contains the address of the next available location in a pushdown pullup (LIFO) queue. The stack resides in random access memory at a location defined by the programmer.

Index register : The Index Register is a 16-bit register which can be used to store data or provide an address for the indexed mode of addressing.

Accumulators : The MPU contains two 8-bit accumulators, A and B, which are used to store operands and results from the arithmetic logic unit (ALU). They can also be concatenated and referred to as the D (double) accumulator.

Condition Code Registers : The condition code register indicates the results of an instruction and includes the following five condition bits : Negative (N), Zero (Z), Overflow (V), Carry/Borrow from MSB (C), and Half Carry from bit 3 (H). These bits are testable by the conditional branch instructions. Bit 4 is the interrupt mask (I-bit) and inhibits all maskable interrupts when set. The two unused bits B6 and B7, are read as ones.

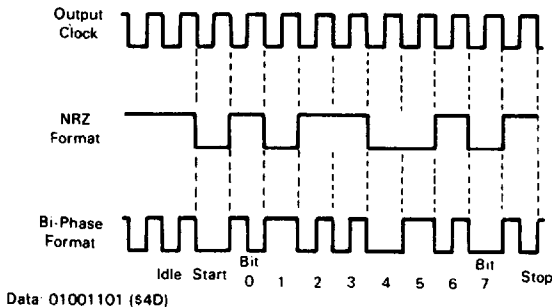


Figure 22 : SCI data formats.



5.10.2 - Addressing modes

Six addressing modes can be used to reference memory. A summary of addressing modes for all instructions is presented in Tables 16, 17, 18 and 19, where execution times are provided in E-cycles. Instructions execution times are summarized in Table 20. With an input frequency of 4 MHz, E-cycles are equivalent to microseconds. A cycle-by-cycle description of bus activity for each instruction is provided in Table 21 and a description of selected instructions is shown in Figure 23.

Immediate Addressing: The operand or «immediate byte(s)» is contained in the following byte(s) of the instruction where the number of bytes matches the size of the register. These are two or three byte instructions.

Direct Addressing: The least significant byte of the operand address is contained in the second byte of the instruction and the most significant byte is assumed to be \$00. Direct addressing allows the user to access \$00 through \$FF using two byte instructions and execution time is reduced by eliminating the additional memory access. In most applications, the 256-byte area is reserved for frequently referenced data.

Extended Addressing: The second and third bytes of the instruction contain the absolute address of the operand. These are three byte instructions.

Indexed Addressing: The unsigned offset contained in the second byte of the instruction is added with carry to the Index Register and used to reference memory without changing the Index Register. These are two byte instructions.

Inherent Addressing: The operand(s) are registers and no memory reference is required. These are single byte instructions.

Relative Addressing: Relative addressing is used only for branch instructions. If the branch condition is true, the Program Counter is overwritten with the sum of a signed single byte displacement in the second byte of the instruction and the current Program Counter. This provides a branch range of - 126 to 129 bytes from the first byte of the instruction. These are two byte instructions.

Table 15 - CPU instruction map

| OP | MNEM | MODE | ~ | # | OP | MNEM | MODE | ~ | # | OP | MNEM | MODE | ~ | # | OP | MNEM | MODE | ~ | # | OP | MNEM | MODE | ~ | # |
|----|------|-------|---|---|----|------|-------|----|---|----|-------|-------|---|----|------|-------|-------|---|----|------|-------|-------|---|---|
| 00 | | | | | 34 | DES | INHER | 3 | 1 | 08 | ASL | INDXD | 6 | 2 | 9C | CFX | DIR | 5 | 2 | D0 | SUBB | DIR | 3 | 2 |
| 01 | NOP | INHER | 2 | 1 | 35 | TXS | | 3 | 1 | 09 | ROL | | 6 | 2 | 9D | JSR | | 5 | 2 | D1 | CMPPB | | 3 | 2 |
| 02 | * | | | | 36 | PSHA | | 3 | 1 | 0A | DEC | | 6 | 2 | 9E | LDS | | 4 | 2 | D2 | SECB | | 3 | 2 |
| 03 | * | | | | 37 | PSHB | | 3 | 1 | 0B | * | | | | 9F | STS | DIR | 4 | 2 | D3 | ADD0 | | 5 | 2 |
| 04 | LSRD | | 3 | 1 | 38 | PULX | | 5 | 1 | 0C | INC | | 6 | 2 | A0 | SUBA | INDXD | 4 | 2 | D4 | ANDB | | 3 | 2 |
| 05 | ASLD | | 3 | 1 | 39 | RTS | | 5 | 1 | 0D | TST | | 6 | 2 | A1 | CMPPA | | 4 | 2 | D5 | BITB | | 3 | 2 |
| 06 | TAP | | 2 | 1 | 3A | ABX | | 3 | 1 | 0E | JMP | | 3 | 2 | A2 | SBCA | | 4 | 2 | D6 | LDAB | | 3 | 2 |
| 07 | TAP | | 2 | 1 | 3B | RTI | IO | 1 | 1 | 0F | CLR | INDXD | 6 | 2 | A3 | SUBD | | 6 | 2 | D7 | STAB | | 3 | 2 |
| 08 | INX | | 3 | 1 | 3C | PSHX | | 4 | 1 | 10 | NEG | EXTND | 6 | 3 | A4 | ANDA | | 4 | 2 | D8 | EORB | | 3 | 2 |
| 09 | DEX | | 3 | 1 | 3D | MUL | | 10 | 1 | 11 | * | | | A5 | BITA | | 7 | 1 | D9 | ADCB | | 3 | 2 | |
| 0A | CLV | | 2 | 1 | 3E | WAI | | 9 | 1 | 12 | * | | | A6 | LDAA | | 4 | 2 | DA | ORAB | | 3 | 2 | |
| 0B | SEV | | 2 | 1 | 3F | SWI | | 12 | 1 | 13 | COM | | 6 | 3 | A7 | STAA | | 4 | 2 | DB | ADDB | | 3 | 2 |
| 0C | CLC | | 2 | 1 | 40 | NEGA | | 2 | 1 | 14 | LSR | | 6 | 3 | A8 | EDRA | | 4 | 2 | DC | LDD | | 4 | 2 |
| 0D | SEC | | 2 | 1 | 41 | * | | | | 15 | * | | | A9 | ADCA | | 4 | 2 | DD | STD | | 4 | 2 | |
| 0E | CLI | | 2 | 1 | 42 | * | | | | 16 | ROR | | 6 | 3 | AA | ORAA | | 4 | 2 | DE | LDX | | 4 | 2 |
| 0F | SEI | | 2 | 1 | 43 | COMA | | 2 | 1 | 17 | ASR | | 6 | 3 | AB | ADDA | | 6 | 3 | DF | STX | | 4 | 2 |
| 10 | SBA | | 2 | 1 | 44 | LSRA | | 2 | 1 | 18 | ASL | | 6 | 3 | AC | CPX | | 4 | 2 | E0 | SUBB | | 4 | 2 |
| 11 | CBA | | 2 | 1 | 45 | * | | | | 19 | ROL | | 6 | 3 | AD | JSR | | 6 | 2 | E1 | CMPPB | | 4 | 2 |
| 12 | * | | | | 46 | RORA | | 2 | 1 | 7A | DEC | | 6 | 3 | AE | LDS | | 5 | 2 | E2 | SECB | | 4 | 2 |
| 13 | * | | | | 47 | ASRA | | 2 | 1 | 7B | * | | | AF | STS | INDXD | 5 | 2 | E3 | ADD0 | | 6 | 2 | |
| 14 | * | | | | 48 | ASLA | | 2 | 1 | 7C | INC | | 6 | 3 | BO | SUBA | EXTND | 4 | 3 | E4 | ANDB | | 4 | 2 |
| 15 | * | | | | 49 | ROLA | | 2 | 1 | 7D | TST | | 6 | 3 | B1 | CMPPA | | 3 | 2 | E5 | BITB | | 4 | 2 |
| 16 | TAB | REL | 2 | 1 | 4A | DECA | | 2 | 1 | 7E | JMP | | 3 | 2 | B2 | SBCA | | 4 | 3 | E6 | LDAB | | 4 | 2 |
| 17 | TBA | | 2 | 1 | 4B | * | | | | 7F | CLR | EXTND | 6 | 3 | B3 | SUBD | | 6 | 3 | E7 | STAB | | 4 | 2 |
| 18 | * | | | | 4C | INCA | | 2 | 1 | 80 | SUBA | IMMED | 2 | 2 | B4 | ANDA | | 4 | 3 | E8 | EORB | | 4 | 2 |
| 19 | OAA | INHER | 2 | 1 | 4D | TSTA | | 2 | 1 | 81 | CMPPA | | 2 | 2 | B5 | BITA | | 4 | 3 | E9 | ADCB | | 4 | 2 |
| 1A | * | | | | 4E | T | | | | 82 | SBCA | | 2 | 2 | B6 | LDAA | | 4 | 3 | EA | ORAB | | 4 | 2 |
| 1B | ABA | INHER | 2 | 1 | 4F | CLRA | | 2 | 1 | 83 | SUBD | | 4 | 3 | B7 | STAA | | 4 | 3 | EB | ADDB | | 4 | 2 |
| 1C | * | | | | 50 | NEGB | | 2 | 1 | 84 | ANDA | | 2 | 2 | B8 | EORA | | 4 | 3 | EC | LDD | | 5 | 2 |
| 1D | * | | | | 51 | * | | | | 85 | BITA | | 2 | 2 | B9 | ADCA | | 4 | 3 | ED | STD | | 5 | 2 |
| 1E | IF | | | | 52 | * | | | | 86 | LDAA | | 2 | 2 | BA | ORAA | | 4 | 3 | EE | LDX | | 5 | 2 |
| 20 | BRA | REL | 3 | 2 | 53 | COMB | | 2 | 1 | 87 | * | | | BB | ADDA | | 4 | 3 | EF | STX | | 5 | 2 | |
| 21 | BRN | | 3 | 2 | 54 | LSRB | | 7 | 1 | 88 | EORA | | 2 | 2 | BC | ADD0 | | 6 | 3 | F0 | SUBB | | 4 | 3 |
| 22 | BHI | | 3 | 2 | 55 | * | | | | 89 | ADCA | | 2 | 2 | BD | JSR | | 6 | 3 | F1 | CMPPB | | 4 | 3 |
| 23 | BLS | | 3 | 2 | 56 | RORB | | 2 | 1 | 8A | ORAA | | 2 | 2 | BE | LDS | | 5 | 3 | F2 | SECB | | 4 | 3 |
| 24 | BCC | | 3 | 2 | 57 | ASRB | | 2 | 1 | 8B | ADDA | | 2 | 2 | BF | STS | EXTND | 5 | 3 | F3 | ADD0 | | 6 | 3 |
| 25 | BCS | | 3 | 2 | 58 | ASLB | | 2 | 1 | 8C | CPX | IMMED | 4 | 3 | CO | SUBB | IMMED | 2 | 2 | F4 | ANDB | | 4 | 3 |
| 26 | BNE | | 3 | 2 | 59 | ROLB | | 2 | 1 | 8D | BSR | | 6 | 2 | C1 | CMPPB | | 2 | 2 | F5 | BITB | | 4 | 3 |
| 27 | BEO | | 3 | 2 | 5A | DECB | | 2 | 1 | 8E | LDS | IMMED | 3 | 3 | C2 | SECB | | 2 | 2 | F6 | LDAB | | 4 | 3 |
| 28 | BVC | | 3 | 2 | 5B | * | | | | 8F | * | | | C3 | ADD0 | | 4 | 3 | F7 | STAB | | 4 | 3 | |
| 29 | BVS | | 3 | 2 | 5C | INCB | | 2 | 1 | 90 | SUBA | DIR | 3 | 2 | C4 | ANDB | | 2 | 2 | F8 | EORB | | 4 | 3 |
| 2A | BPL | | 3 | 2 | 5D | TSTB | | 2 | 1 | 91 | CMPPA | | 3 | 2 | C5 | BITB | | 2 | 2 | F9 | ADCB | | 4 | 3 |
| 2B | BMI | | 3 | 2 | 5E | T | | | | 92 | SBCA | | 3 | 2 | C6 | LDAB | | 2 | 2 | FA | ORAB | | 4 | 3 |
| 2C | BGE | | 3 | 2 | 5F | CLRB | INHER | 2 | 1 | 93 | SUBD | | 5 | 2 | C7 | * | | | | FB | ADDB | | 4 | 3 |
| 2D | BLT | | 3 | 2 | 60 | NEG | INDXD | 6 | 2 | 94 | ANDA | | 3 | 2 | C8 | EORB | | 2 | 2 | FC | LDD | | 5 | 3 |
| 2E | BGT | | 3 | 2 | 61 | * | | | | 95 | BITA | | 3 | 2 | C9 | ADCB | | 2 | 2 | FD | STD | | 5 | 3 |
| 2F | BLE | REL | 3 | 2 | 62 | * | | | | 96 | LDAA | | 3 | 2 | CA | ORAB | | 2 | 2 | FE | LDX | | 5 | 3 |
| 30 | TSX | INHER | 3 | 1 | 63 | COM | | 6 | 2 | 97 | STAA | | 3 | 2 | CB | ADDB | | 2 | 2 | FF | STX | EXTND | 5 | 3 |
| 31 | INS | | 3 | 1 | 64 | LSR | | 6 | 2 | 98 | EORA | | 3 | 2 | CC | LDD | | 3 | 2 | | | | | |
| 32 | PULA | | 4 | 1 | 65 | * | | | | 99 | ADCA | | 3 | 2 | CD | * | | | | | | | | |
| 33 | PULB | | 4 | 1 | 66 | ROR | | 6 | 2 | 9A | ORAA | | 3 | 2 | CE | LDX | IMMED | 3 | 3 | | | | | |
| | | | | | 67 | ASR | | 6 | 2 | 9B | ADDA | | 3 | 2 | CF | * | | | | | | | | |

NOTES:

- Addressing Modes
 INHER = Inherent INDXD = Indexed IMMED = Immediate
 REL = Relative EXTND = Extended DIR = Direct
- Unassigned opcodes are indicated by "*" and should not be executed.
- Codes marked by "T" force the PC to function as a 16-bit counter.

Table 18 - Jump and branch instructions

| Operations | Mnemonic | Direct | | Relative | | Index | | Extnd | | Inherent | | Branch Test | Cond. Code Reg. | | | | | |
|--------------------------|----------|--------|---|----------|---|-------|----|-------|---|----------|---|-----------------|--------------------------------------|---|---|---|---|---|
| | | OP | # | OP | # | OP | # | OP | # | OP | # | | H | I | N | Z | V | C |
| Branch Always | BRA | | | 20 | 3 | 2 | | | | | | None | ● | ● | ● | ● | ● | ● |
| Branch Never | BRN | | | 21 | 3 | 2 | | | | | | None | ● | ● | ● | ● | ● | ● |
| Branch If Carry Clear | BCC | | | 24 | 3 | 2 | | | | | | C = 0 | ● | ● | ● | ● | ● | ● |
| Branch If Carry Set | BCS | | | 25 | 3 | 2 | | | | | | C = 1 | ● | ● | ● | ● | ● | ● |
| Branch If = Zero | BEQ | | | 27 | 3 | 2 | | | | | | Z = 1 | ● | ● | ● | ● | ● | ● |
| Branch If ≥ Zero | BGE | | | 2C | 3 | 2 | | | | | | N ⊕ V = 0 | ● | ● | ● | ● | ● | ● |
| Branch If > Zero | BGT | | | 2E | 3 | 2 | | | | | | Z + (N ⊕ V) = 0 | ● | ● | ● | ● | ● | ● |
| Branch If Higher | BHI | | | 22 | 3 | 2 | | | | | | C + Z = 0 | ● | ● | ● | ● | ● | ● |
| Branch If Higher or Same | BHS | | | 24 | 3 | 2 | | | | | | C = 0 | ● | ● | ● | ● | ● | ● |
| Branch If ≤ Zero | BLE | | | 2F | 3 | 2 | | | | | | Z + (N ⊕ V) = 1 | ● | ● | ● | ● | ● | ● |
| Branch If Carry Set | BLO | | | 25 | 3 | 2 | | | | | | C = 1 | ● | ● | ● | ● | ● | ● |
| Branch If Lower Or Same | BLS | | | 23 | 3 | 2 | | | | | | C + Z = 1 | ● | ● | ● | ● | ● | ● |
| Branch If < Zero | BLT | | | 2D | 3 | 2 | | | | | | N ⊕ V = 1 | ● | ● | ● | ● | ● | ● |
| Branch If Minus | BMI | | | 2B | 3 | 2 | | | | | | N = 1 | ● | ● | ● | ● | ● | ● |
| Branch If Not Equal Zero | BNE | | | 26 | 3 | 2 | | | | | | Z = 0 | ● | ● | ● | ● | ● | ● |
| Branch If Overflow Clear | BVC | | | 28 | 3 | 2 | | | | | | V = 0 | ● | ● | ● | ● | ● | ● |
| Branch If Overflow Set | BVS | | | 29 | 3 | 2 | | | | | | V = 1 | ● | ● | ● | ● | ● | ● |
| Branch If Plus | BPL | | | 2A | 3 | 2 | | | | | | N = 0 | ● | ● | ● | ● | ● | ● |
| Branch To Subroutine | BSR | | | 8D | 6 | 2 | | | | | | | ● | ● | ● | ● | ● | ● |
| Jump | JMP | | | | | | 6E | 3 | 2 | 7E | 3 | 3 | } See Special Operations - Figure 26 | ● | ● | ● | ● | ● |
| Jump To Subroutine | JSR | 9D | 5 | 2 | | | AD | 6 | 2 | BD | 6 | 3 | | ● | ● | ● | ● | ● |
| No Operation | NOP | | | | | | | | | | | 01 | 2 | 1 | ● | ● | ● | ● |
| Return From Interrupt | RTI | | | | | | | | | | | 3B | 10 | 1 | ● | ● | ● | ● |
| Return From Subroutine | RTS | | | | | | | | | | | 39 | 5 | 1 | ● | ● | ● | ● |
| Software Interrupt | SWI | | | | | | | | | | | 3F | 12 | 1 | ● | S | ● | ● |
| Wait For Interrupt | WAI | | | | | | | | | | | 3E | 9 | 1 | ● | ● | ● | ● |

Table 19 - Condition code register manipulation instructions

| Operations | Inherent | | | Boolean Operation | Cond. Code Reg. | | | | | | |
|----------------------|----------|----|---|-------------------|-----------------|---|---|---|---|---|---|
| | Mnemonic | OP | # | | H | I | N | Z | V | C | |
| Clear Carry | CLC | 0C | 2 | 1 | 0 → C | ● | ● | ● | ● | ● | R |
| Clear Interrupt Mask | CLI | 0E | 2 | 1 | 0 → I | ● | R | ● | ● | ● | ● |
| Clear Overflow | CLV | 0A | 2 | 1 | 0 → V | ● | ● | ● | ● | R | ● |
| Set Carry | SEC | 0D | 2 | 1 | 1 → C | ● | ● | ● | ● | ● | S |
| Set Interrupt Mask | SEI | 0F | 2 | 1 | 1 → I | ● | S | ● | ● | ● | ● |
| Set Overflow | SEV | 0B | 2 | 1 | 1 → V | ● | ● | ● | ● | S | ● |
| Accumulator A → CCR | TAP | 06 | 2 | 1 | A → CCR | ↑ | ↑ | ↑ | ↑ | ↑ | ↑ |
| CCR → Accumulator A | TPA | 07 | 2 | 1 | CCR → A | ● | ● | ● | ● | ● | ● |

LEGEND

- OP Operation Code (Hexadecimal)
- ~ Number of MPU Cycles
- MSP Contents of memory location pointed to by Stack Pointer
- # Number of Program Bytes
- + Arithmetic Plus
- Arithmetic Minus
- Boolean AND
- X Arithmetic Multiply
- + Boolean Inclusive OR
- ⊕ Boolean Exclusive OR
- M Complement of M
- Transfer Into
- 0 Bit = Zero
- 00 Byte = Zero

CONDITION CODE SYMBOLS

- H Half-carry from bit 3
- I Interrupt mask
- N Negative (sign bit)
- Z Zero (byte)
- V Overflow, 2's complement
- C Carry/Borrow from MSB
- R Reset Always
- S Set Always
- ↑ Affected
- Not Affected

Table 20 - Instruction execution times in E-cycles

| | ADDRESSING MODE | | | | | |
|------|-----------------|--------|----------|---------|----------|----------|
| | Immediate | Direct | Extended | Indexed | Inherent | Relative |
| ABA | ● | ● | ● | ● | 2 | ● |
| ABX | ● | ● | ● | ● | 3 | ● |
| ADC | 2 | 3 | 4 | 4 | ● | ● |
| ADD | 2 | 3 | 4 | 4 | ● | ● |
| ADDD | 4 | 5 | 6 | 6 | ● | ● |
| AND | 2 | 3 | 4 | 4 | ● | ● |
| ASL | ● | ● | 6 | 6 | 2 | ● |
| ASLD | ● | ● | ● | ● | 3 | ● |
| ASR | ● | ● | 6 | 6 | 2 | ● |
| BCC | ● | ● | ● | ● | ● | 3 |
| BCS | ● | ● | ● | ● | ● | 3 |
| BEQ | ● | ● | ● | ● | ● | 3 |
| BGE | ● | ● | ● | ● | ● | 3 |
| BGT | ● | ● | ● | ● | ● | 3 |
| BHI | ● | ● | ● | ● | ● | 3 |
| BHS | ● | ● | ● | ● | ● | 3 |
| BIT | 2 | 3 | 4 | 4 | ● | ● |
| BLE | ● | ● | ● | ● | ● | 3 |
| BLO | ● | ● | ● | ● | ● | 3 |
| BLS | ● | ● | ● | ● | ● | 3 |
| BLT | ● | ● | ● | ● | ● | 3 |
| BMI | ● | ● | ● | ● | ● | 3 |
| BNE | ● | ● | ● | ● | ● | 3 |
| BPL | ● | ● | ● | ● | ● | 3 |
| BRA | ● | ● | ● | ● | ● | 3 |
| BRN | ● | ● | ● | ● | ● | 3 |
| BSR | ● | ● | ● | ● | 6 | ● |
| BVC | ● | ● | ● | ● | ● | 3 |
| BVS | ● | ● | ● | ● | ● | 3 |
| CBA | ● | ● | ● | ● | 2 | ● |
| CLC | ● | ● | ● | ● | 2 | ● |
| CLI | ● | ● | ● | ● | 2 | ● |
| CLR | ● | ● | 6 | 6 | 2 | ● |
| CLV | ● | ● | ● | ● | 2 | ● |
| CMP | 2 | 3 | 4 | 4 | ● | ● |
| COM | ● | ● | 6 | 6 | 2 | ● |
| CPX | 4 | 5 | 6 | 6 | ● | ● |
| DAA | ● | ● | ● | ● | 2 | ● |
| DEC | ● | ● | 6 | 6 | 2 | ● |
| DES | ● | ● | ● | ● | 3 | ● |
| DEX | ● | ● | ● | ● | 3 | ● |
| EOR | 2 | 3 | 4 | 4 | ● | ● |
| INC | ● | ● | 6 | 6 | ● | ● |
| INS | ● | ● | ● | ● | 3 | ● |
| INX | ● | ● | ● | ● | 3 | ● |
| JMP | ● | ● | 3 | 3 | ● | ● |
| JSR | ● | 5 | 6 | 6 | ● | ● |
| LDA | 2 | 3 | 4 | 4 | ● | ● |
| LDD | 3 | 4 | 5 | 5 | ● | ● |
| LDS | 3 | 4 | 5 | 5 | ● | ● |
| LDX | 3 | 4 | 5 | 5 | ● | ● |
| LSL | ● | ● | 6 | 6 | 2 | ● |
| LSLD | ● | ● | ● | ● | 3 | ● |
| LSR | ● | ● | 6 | 6 | 2 | ● |
| LSRD | ● | ● | ● | ● | 3 | ● |
| MUL | ● | ● | ● | ● | 10 | ● |
| NEG | ● | ● | 6 | 6 | 2 | ● |
| NOP | ● | ● | ● | ● | 2 | ● |
| ORA | 2 | 3 | 4 | 4 | ● | ● |
| PSH | ● | ● | ● | ● | 3 | ● |
| PSHX | ● | ● | ● | ● | 4 | ● |
| PUL | ● | ● | ● | ● | 4 | ● |
| PULX | ● | ● | ● | ● | 5 | ● |
| ROL | ● | ● | 6 | 6 | 2 | ● |
| ROR | ● | ● | 6 | 6 | 2 | ● |
| RTI | ● | ● | ● | ● | 10 | ● |
| RTS | ● | ● | ● | ● | 5 | ● |
| SBA | ● | ● | ● | ● | 2 | ● |
| SBC | 2 | 3 | 4 | 4 | ● | ● |
| SEC | ● | ● | ● | ● | 2 | ● |
| SEI | ● | ● | ● | ● | 2 | ● |
| SEV | ● | ● | ● | ● | 2 | ● |
| STA | ● | 3 | 4 | 4 | ● | ● |
| STD | ● | 4 | 5 | 5 | ● | ● |
| STS | ● | 4 | 5 | 5 | ● | ● |
| STX | ● | 4 | 5 | 5 | ● | ● |
| SUB | 2 | 3 | 4 | 4 | ● | ● |
| SUBD | 4 | 5 | 6 | 6 | ● | ● |
| SWI | ● | ● | ● | ● | 12 | ● |
| TAB | ● | ● | ● | ● | 2 | ● |
| TAP | ● | ● | ● | ● | 2 | ● |
| TBA | ● | ● | ● | ● | 2 | ● |
| TPA | ● | ● | ● | ● | 2 | ● |
| TST | ● | ● | 6 | 6 | 2 | ● |
| TSX | ● | ● | ● | ● | 3 | ● |
| TXS | ● | ● | ● | ● | 3 | ● |
| WAI | ● | ● | ● | ● | 9 | ● |

6.11 - Summary of cycle-by-cycle operation

Table 21 provides a detailed description of the information present on the address bus, data bus, and the read/write (R/W) line during each cycle of each instruction.

The information is useful in comparing actual with expected results during debug of both software and hardware as the program is executed. The information is categorized in groups according to addressing mode and number of cycles per instruction. In general, instructions with the same addressing mode and number of cycles execute in the same manner. Exceptions are indicated in the table.

Note that during MPU reads of internal locations, the resultant value will not appear on the external data bus except in mode 0. «High order» byte refers to the most-significant byte of a 16-bit value.

Table 21 - Cycle-by-cycle operation (sheet 1 of 5)

| Address Mode and Instructions | | Cycles | Cycle # | Address Bus | R/W Line | Data Bus |
|-------------------------------|-----|--------|---------|------------------------|----------|----------------------------------|
| IMMEDIATE | | | | | | |
| ADC | EOR | 2 | 1 | Opcode Address | 1 | Opcode |
| ADD | LDA | | 2 | Opcode Address + 1 | 1 | Operand Data |
| AND | ORA | | | | | |
| BIT | SBC | | | | | |
| CMP | SUB | | | | | |
| LDS | | 3 | 1 | Opcode Address | 1 | Opcode |
| LDX | | | 2 | Opcode Address + 1 | 1 | Operand Data (High Order Byte) |
| LDD | | | 3 | Opcode Address + 2 | 1 | Operand Data (Low Order Byte) |
| CPX | | 4 | 1 | Opcode Address | 1 | Opcode |
| SUBD | | | 2 | Opcode Address + 1 | 1 | Operand Data (High Order Byte) |
| ADDD | | | 3 | Opcode Address + 2 | 1 | Operand Data (Low Order Byte) |
| | | | 4 | Address Bus FFFF | 1 | Low Byte of Restart Vector |
| DIRECT | | | | | | |
| ADC | EOR | 3 | 1 | Opcode Address | 1 | Opcode |
| ADD | LDA | | 2 | Opcode Address + 1 | 1 | Address of Operand |
| AND | ORA | | 3 | Address of Operand | 1 | Operand Data |
| BIT | SBC | | | | | |
| CMP | SUB | | | | | |
| STA | | 3 | 1 | Opcode Address | 1 | Opcode |
| | | | 2 | Opcode Address + 1 | 1 | Destination Address |
| | | | 3 | Destination Address | 0 | Data from Accumulator |
| LDS | | 4 | 1 | Opcode Address | 1 | Opcode |
| LDX | | | 2 | Opcode Address + 1 | 1 | Address of Operand |
| LDD | | | 3 | Address of Operand | 1 | Operand Data (High Order Byte) |
| | | | 4 | Operand Address + 1 | 1 | Operand Data (Low Order Byte) |
| STS | | 4 | 1 | Opcode Address | 1 | Opcode |
| STX | | | 2 | Opcode Address + 1 | 1 | Address of Operand |
| STD | | | 3 | Address of Operand | 0 | Register Data (High Order Byte) |
| | | | 4 | Address of Operand + 1 | 0 | Register Data (Low Order Byte) |
| CPX | | 5 | 1 | Opcode Address | 1 | Opcode |
| SUBD | | | 2 | Opcode Address + 1 | 1 | Address of Operand |
| ADDD | | | 3 | Operand Address | 1 | Operand Data (High Order Byte) |
| | | | 4 | Operand Address + 1 | 1 | Operand Data (Low Order Byte) |
| | | | 5 | Address Bus FFFF | 1 | Low Byte of Restart Vector |
| JSR | | 5 | 1 | Opcode Address | 1 | Opcode |
| | | | 2 | Opcode Address + 1 | 1 | Irrelevant Data |
| | | | 3 | Subroutine Address | 1 | First Subroutine Opcode |
| | | | 4 | Stack Pointer | 0 | Return Address (Low Order Byte) |
| | | | 5 | Stack Pointer - 1 | 0 | Return Address (High Order Byte) |



Table 21 - Cycle-by-cycle operation (sheet 2 of 5)

| Address Mode and Instructions | | Cycles | Cycle # | Address Bus | R/W Line | Data Bus |
|---|--|--------|---------|-----------------------------|----------|---|
| EXTENDED | | | | | | |
| JMP | | 3 | 1 | Opcode Address | 1 | Opcode |
| | | | 2 | Opcode Address + 1 | 1 | Jump Address (High Order Byte) |
| | | | 3 | Opcode Address + 2 | 1 | Jump Address (Low Order Byte) |
| ADC ADD LDA AND ORA BIT SBC CMP SUB | | 4 | 1 | Opcode Address | 1 | Opcode |
| | | | 2 | Opcode Address + 1 | 1 | Address of Operand |
| | | | 3 | Opcode Address + 2 | 1 | Address of Operand (Low Order Byte) |
| | | | 4 | Address of Operand | 1 | Operand Data |
| STA | | 4 | 1 | Opcode Address | 1 | Opcode |
| | | | 2 | Opcode Address + 1 | 1 | Destination Address (High Order Byte) |
| | | | 3 | Opcode Address + 2 | 1 | Destination Address (Low Order Byte) |
| | | | 4 | Operand Destination Address | 0 | Data from Accumulator |
| LDS LDX LDD | | 5 | 1 | Opcode Address | 1 | Opcode |
| | | | 2 | Opcode Address + 1 | 1 | Address of Operand (High Order Byte) |
| | | | 3 | Opcode Address + 2 | 1 | Address of Operand (Low Order Byte) |
| | | | 4 | Address of Operand | 1 | Operand Data (High Order Byte) |
| | | | 5 | Address of Operand + 1 | 1 | Operand Data (Low Order Byte) |
| STS STX STD | | 5 | 1 | Opcode Address | 1 | Opcode |
| | | | 2 | Opcode Address + 1 | 1 | Address of Operand (High Order Byte) |
| | | | 3 | Opcode Address + 2 | 1 | Address of Operand (Low Order Byte) |
| | | | 4 | Address of Operand | 0 | Operand Data (High Order Byte) |
| | | | 5 | Address of Operand + 1 | 0 | Operand Data (Low Order Byte) |
| ASL LSR ASR NEG CLR ROL COM ROR DEC TST* INC | | 6 | 1 | Opcode Address | 1 | Opcode |
| | | | 2 | Opcode Address + 1 | 1 | Address of Operand (High Order Byte) |
| | | | 3 | Opcode Address + 2 | 1 | Address of Operand (Low Order Byte) |
| | | | 4 | Address of Operand | 1 | Current Operand Data |
| | | | 5 | Address Bus FFFF | 1 | Low Byte of Restart Vector |
| | | | 6 | Address of Operand | 0 | New Operand Data |
| CPX SUBD ADD | | 6 | 1 | Opcode Address | 1 | Opcode |
| | | | 2 | Opcode Address + 1 | 1 | Operand Address (High Order Byte) |
| | | | 3 | Opcode Address + 2 | 1 | Operand Address (Low Order Byte) |
| | | | 4 | Operand Address | 1 | Operand Data (High Order Byte) |
| | | | 5 | Operand Address + 1 | 1 | Operand Data (Low Order Byte) |
| | | | 6 | Address Bus FFFF | 1 | Low Byte of Restart Vector |
| JSR | | 6 | 1 | Opcode Address | 1 | Opcode |
| | | | 2 | Opcode Address + 1 | 1 | Address of Subroutine (High Order Byte) |
| | | | 3 | Opcode Address + 2 | 1 | Address of Subroutine (Low Order Byte) |
| | | | 4 | Subroutine Starting Address | 1 | Opcode of Next Instruction |
| | | | 5 | Stack Pointer | 0 | Return Address (Low Order Byte) |
| | | | 6 | Stack Pointer - 1 | 0 | Return Address (High Order Byte) |

* TST does not perform the write cycle during the sixth cycle. The sixth cycle is another address bus = \$FFFF.

Table 21 - Cycle-by-cycle operation (sheet 3 of 5)

| Address Mode and Instructions | Cycles | Cycle # | Address Bus | R/W Line | Data Bus |
|--|--------|---------|--------------------------------|----------|----------------------------------|
| INDEXED | | | | | |
| JMP | 3 | 1 | Opcode Address | 1 | Opcode |
| | | 2 | Opcode Address + 1 | 1 | Offset |
| | | 3 | Address Bus FFFF | 1 | Low Byte of Restart Vector |
| ADC ADD AND BIT CMP | 4 | 1 | Opcode Address | 1 | Opcode |
| EOR LDA ORA SBC SUB | | 2 | Opcode Address + 1 | 1 | Offset |
| | | 3 | Address Bus FFFF | 1 | Low Byte of Restart Vector |
| | | 4 | Index Register Plus Offset | 1 | Operand Data |
| STA | 4 | 1 | Opcode Address | 1 | Opcode |
| | | 2 | Opcode Address + 1 | 1 | Offset |
| | | 3 | Address Bus FFFF | 1 | Low Byte of Restart Vector |
| | | 4 | Index Register Plus Offset | 0 | Operand Data |
| LDS LDX LDD | 5 | 1 | Opcode Address | 1 | Opcode |
| | | 2 | Opcode Address + 1 | 1 | Offset |
| | | 3 | Address Bus FFFF | 1 | Low Byte of Restart Vector |
| | | 4 | Index Register Plus Offset | 1 | Operand Data (High Order Byte) |
| | | 5 | Index Register Plus Offset + 1 | 1 | Operand Data (Low Order Byte) |
| STS STX STD | 5 | 1 | Opcode Address | 1 | Opcode |
| | | 2 | Opcode Address + 1 | 1 | Offset |
| | | 3 | Address Bus FFFF | 1 | Low Byte of Restart Vector |
| | | 4 | Index Register Plus Offset | 0 | Operand Data (High Order Byte) |
| | | 5 | Index Register Plus Offset + 1 | 0 | Operand Data (Low Order Byte) |
| ASL ASR CLR COM DEC INC | 6 | 1 | Opcode Address | 1 | Opcode |
| LSR NEG ROL ROR TST* | | 2 | Opcode Address + 1 | 1 | Offset |
| | | 3 | Address Bus FFFF | 1 | Low Byte of Restart Vector |
| | | 4 | Index Register Plus Offset | 1 | Current Operand Data |
| | | 5 | Address Bus FFFF | 1 | Low Byte of Restart Vector |
| | | 6 | Index Register Plus Offset | 0 | New Operand Data |
| CPX SUBD ADD | 6 | 1 | Opcode Address | 1 | Opcode |
| | | 2 | Opcode Address + 1 | 1 | Offset |
| | | 3 | Address Bus FFFF | 1 | Low Byte of Restart Vector |
| | | 4 | Index Register + Offset | 1 | Operand Data (High Order Byte) |
| | | 5 | Index Register + Offset + 1 | 1 | Operand Data (Low Order Byte) |
| | | 6 | Address Bus FFFF | 1 | Low Byte of Restart Vector |
| JSR | 6 | 1 | Opcode Address | 1 | Opcode |
| | | 2 | Opcode Address + 1 | 1 | Offset |
| | | 3 | Address Bus FFFF | 1 | Low Byte of Restart Vector |
| | | 4 | Index Register + Offset | 1 | First Subroutine Opcode |
| | | 5 | Stack Pointer | 0 | Return Address (Low Order Byte) |
| | | 6 | Stack Pointer - 1 | 0 | Return Address (High Order Byte) |

*TST does not perform the write cycle during the sixth cycle. The sixth cycle is another address bus = \$FFFF.

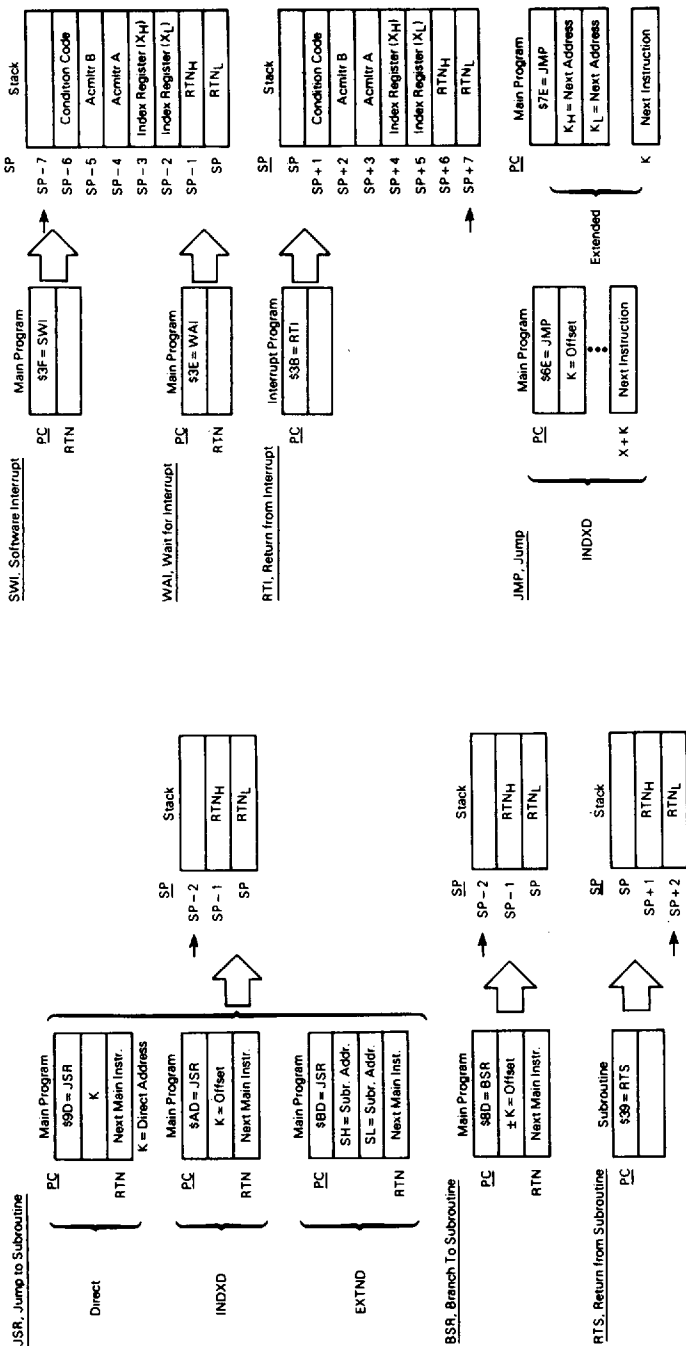
Table 21 - Cycle-by-cycle operation (sheet 4 of 5)

| Address Mode and Instructions | | | Cycles | Cycle # | Address Bus | R/W Line | Data Bus |
|-------------------------------|-----|-----|--------|---------|---------------------------------|----------|---|
| INHERENT | | | | | | | |
| ABA | DAA | SEC | 2 | 1 | Opcode Address | 1 | Opcode |
| ASL | DEC | SEI | | 2 | Opcode Address + 1 | 1 | Opcode of Next Instruction |
| ASR | INC | SEV | 3 | 1 | Address Bus FFFF | 1 | Low Byte of Restart Vector |
| CBA | LSR | TAB | | 2 | | | |
| CLC | NEG | TAP | | 3 | | | |
| CLI | NOP | TBA | | | | | |
| CLR | ROL | TPA | | | | | |
| CLV | ROR | TST | | | | | |
| COM | SBA | | | | | | |
| ABX | | | 3 | 1 | Opcode Address | 1 | Opcode |
| | | | | 2 | Opcode Address + 1 | 1 | Irrelevant Data |
| | | | | 3 | Address Bus FFFF | 1 | Low Byte of Restart Vector |
| ASLD | | | 3 | 1 | Opcode Address | 1 | Opcode |
| LSRD | | | | 2 | Opcode Address + 1 | 1 | Irrelevant Data |
| | | | | 3 | Address Bus FFFF | 1 | Low Byte of Restart Vector |
| DES | | | 3 | 1 | Opcode Address | 1 | Opcode |
| INS | | | | 2 | Opcode Address + 1 | 1 | Opcode of Next Instruction |
| | | | | 3 | Previous Stack Pointer Contents | 1 | Irrelevant Data |
| INX | | | 3 | 1 | Opcode Address | 1 | Opcode |
| DEX | | | | 2 | Opcode Address + 1 | 1 | Opcode of Next Instruction |
| | | | | 3 | Address Bus FFFF | 1 | Low Byte of Restart Vector |
| PSHA | | | 3 | 1 | Opcode Address | 1 | Opcode |
| PSHB | | | | 2 | Opcode Address + 1 | 1 | Opcode of Next Instruction |
| | | | | 3 | Stack Pointer | 0 | Accumulator Data |
| TSX | | | 3 | 1 | Opcode Address | 1 | Opcode |
| | | | | 2 | Opcode Address + 1 | 1 | Opcode of Next Instruction |
| | | | | 3 | Stack Pointer | 1 | Irrelevant Data |
| TXS | | | 3 | 1 | Opcode Address | 1 | Opcode |
| | | | | 2 | Opcode Address + 1 | 1 | Opcode of Next Instruction |
| | | | | 3 | Address Bus FFFF | 1 | Low Byte of Restart Vector |
| PULA | | | 4 | 1 | Opcode Address | 1 | Opcode |
| PULB | | | | 2 | Opcode Address + 1 | 1 | Opcode of Next Instruction |
| | | | | 3 | Stack Pointer | 1 | Irrelevant Data |
| | | | | 4 | Stack Pointer + 1 | 1 | Operand Data from Stack |
| PSHX | | | 4 | 1 | Opcode Address | 1 | Opcode |
| | | | | 2 | Opcode Address + 1 | 1 | Irrelevant Data |
| | | | | 3 | Stack Pointer | 0 | Index Register (Low Order Byte) |
| | | | | 4 | Stack Pointer - 1 | 0 | Index Register (High Order Byte) |
| PULX | | | 5 | 1 | Opcode Address | 1 | Opcode |
| | | | | 2 | Opcode Address + 1 | 1 | Irrelevant Data |
| | | | | 3 | Stack Pointer | 1 | Irrelevant Data |
| | | | | 4 | Stack Pointer + 1 | 1 | Index Register (High Order Byte) |
| | | | | 5 | Stack Pointer + 2 | 1 | Index Register (Low Order Byte) |
| RTS | | | 5 | 1 | Opcode Address | 1 | Opcode |
| | | | | 2 | Opcode Address + 1 | 1 | Irrelevant Data |
| | | | | 3 | Stack Pointer | 1 | Irrelevant Data |
| | | | | 4 | Stack Pointer + 1 | 1 | Address of Next Instruction (High Order Byte) |
| | | | | 5 | Stack Pointer + 2 | 1 | Address of Next Instruction (Low Order Byte) |
| WAI | | | 9 | 1 | Opcode Address | 1 | Opcode |
| | | | | 2 | Opcode Address + 1 | 1 | Opcode of Next Instruction |
| | | | | 3 | Stack Pointer | 0 | Return Address (Low Order Byte) |
| | | | | 4 | Stack Pointer - 1 | 0 | Return Address (High Order Byte) |
| | | | | 5 | Stack Pointer - 2 | 0 | Index Register (Low Order Byte) |
| | | | | 6 | Stack Pointer - 3 | 0 | Index Register (High Order Byte) |
| | | | | 7 | Stack Pointer - 4 | 0 | Contents of Accumulator A |
| | | | | 8 | Stack Pointer - 5 | 0 | Contents of Accumulator B |
| | | | | 9 | Stack Pointer - 6 | 0 | Contents of Condition Code Register |

5

Table 21 - Cycle-by-cycle operation (sheet 5 of 5)

| Address Mode and Instructions | Cycles | Cycle # | Address Bus | R/W Line | Data Bus | | | | |
|-------------------------------|-------------------|---------------|----------------------------------|---------------------------------|---|---|-----------------------------|---|----------------------------|
| INHERENT | | | | | | | | | |
| MUL | 10 | 1 | Opcode Address | 1 | Opcode | | | | |
| | | 2 | Opcode Address + 1 | 1 | Irrelevant Data | | | | |
| | | 3 | Address Bus FFFF | 1 | Low Byte of Restart Vector | | | | |
| | | 4 | Address Bus FFFF | 1 | Low Byte of Restart Vector | | | | |
| | | 5 | Address Bus FFFF | 1 | Low Byte of Restart Vector | | | | |
| | | 6 | Address Bus FFFF | 1 | Low Byte of Restart Vector | | | | |
| | | 7 | Address Bus FFFF | 1 | Low Byte of Restart Vector | | | | |
| | | 8 | Address Bus FFFF | 1 | Low Byte of Restart Vector | | | | |
| | | 9 | Address Bus FFFF | 1 | Low Byte of Restart Vector | | | | |
| | | 10 | Address Bus FFFF | 1 | Low Byte of Restart Vector | | | | |
| RTI | 10 | 1 | Opcode Address | 1 | Opcode | | | | |
| | | 2 | Opcode Address + 1 | 1 | Irrelevant Data | | | | |
| | | 3 | Stack Pointer | 1 | Irrelevant Data | | | | |
| | | 4 | Stack Pointer + 1 | 1 | Contents of Condition Code Register from Stack | | | | |
| | | 5 | Stack Pointer + 2 | 1 | Contents of Accumulator B from Stack | | | | |
| | | 6 | Stack Pointer + 3 | 1 | Contents of Accumulator A from Stack | | | | |
| | | 7 | Stack Pointer + 4 | 1 | Index Register from Stack (High Order Byte) | | | | |
| | | 8 | Stack Pointer + 5 | 1 | Index Register from Stack (Low Order Byte) | | | | |
| | | 9 | Stack Pointer + 6 | 1 | Next Instruction Address from Stack (High Order Byte) | | | | |
| | | 10 | Stack Pointer + 7 | 1 | Next Instruction Address from Stack (Low Order Byte) | | | | |
| SWI | 12 | 1 | Opcode Address | 1 | Opcode | | | | |
| | | 2 | Opcode Address + 1 | 1 | Irrelevant Data | | | | |
| | | 3 | Stack Pointer | 0 | Return Address (Low Order Byte) | | | | |
| | | 4 | Stack Pointer - 1 | 0 | Return Address (High Order Byte) | | | | |
| | | 5 | Stack Pointer - 2 | 0 | Index Register (Low Order Byte) | | | | |
| | | 6 | Stack Pointer - 3 | 0 | Index Register (High Order Byte) | | | | |
| | | 7 | Stack Pointer - 4 | 0 | Contents of Accumulator A | | | | |
| | | 8 | Stack Pointer - 5 | 0 | Contents of Accumulator B | | | | |
| | | 9 | Stack Pointer - 6 | 0 | Contents of Condition Code Register | | | | |
| | | 10 | Stack Pointer - 7 | 1 | Irrelevant Data | | | | |
| | | 11 | Vector Address FFFA (Hex) | 1 | Address of Subroutine (High Order Byte) | | | | |
| | | 12 | Vector Address FFFB (Hex) | 1 | Address of Subroutine (Low Order Byte) | | | | |
| RELATIVE | | | | | | | | | |
| BCC BHT BNE BLO | 3 | 1 | Opcode Address | 1 | Opcode | | | | |
| BCS BLE BPL BHS | | 2 | Opcode Address + 1 | 1 | Branch Offset | | | | |
| BEQ BLS BRA BRN | | 3 | Address Bus FFFF | 1 | Low Byte of Restart Vector | | | | |
| BGE BLT BVC | 6 | 1 | Address Bus FFFF | 1 | Low Byte of Restart Vector | | | | |
| BGT BMI BVS | | | | | | | | | |
| BSR | | | | | | 1 | Opcode Address | 1 | Opcode |
| | | | | | | 2 | Opcode Address + 1 | 1 | Branch Offset |
| | | | | | | 3 | Address Bus FFFF | 1 | Low Byte of Restart Vector |
| | | | | | | 4 | Subroutine Starting Address | 1 | Opcode of Next Instruction |
| | 5 | Stack Pointer | 0 | Return Address (Low Order Byte) | | | | | |
| 6 | Stack Pointer - 1 | 0 | Return Address (High Order Byte) | | | | | | |



Legend:
 RTN = Address of next instruction in Main Program to be executed upon return from subroutine
 RTN_H = Most significant byte of Return Address
 RTN_L = Least significant byte of Return Address
 → = Stack Pointer After Execution
 K = 8-bit Unsigned Value

Figure 23 : Special operations.

7 - PREPARATION FOR DELIVERY

7.1 - Packaging

Microcircuit are prepared for delivery in accordance with MIL-M-38510 or CECC 90000.

7.2 - Certificate of compliance

TMS offers a certificate of compliance with each shipment of parts, affirming the products are in compliance either with MIL-STD-883 or CECC 90000 and guarantying the parameters are tested at extreme temperatures for the entire temperature range.

8 - HANDLING

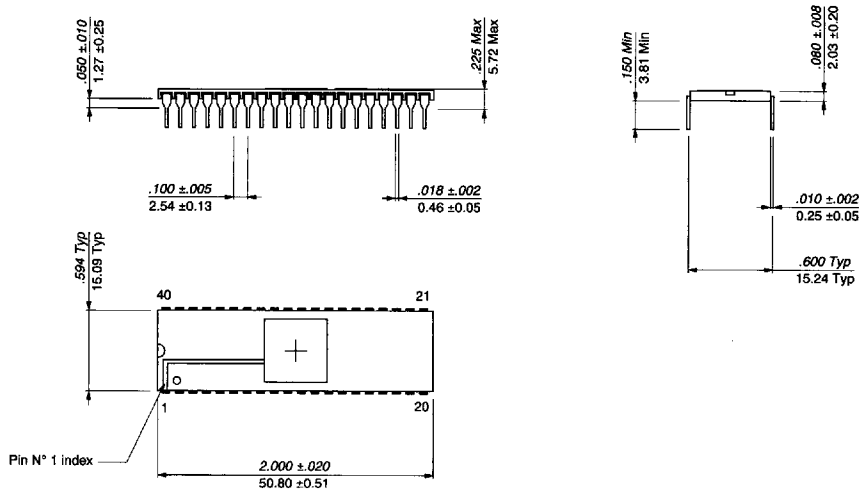
MOS device must be handled with certain precautions to avoid damage due to accumulation of static charge. Input protection devices have been designed in the chip to minimize the effect of this static buildup. However, the following handling practices are recommended :

- a) Device should be handled on benches with conductive and grounded surface.
- b) Ground-test equipment, tools and operator.
- c) Do not handle devices by the leads.
- d) Store devices in conductive foam or carriers.
- e) Avoid use of plastic, rubber, or silk in MOS areas.
- f) Maintain relative humidity above 50 %, if practical.



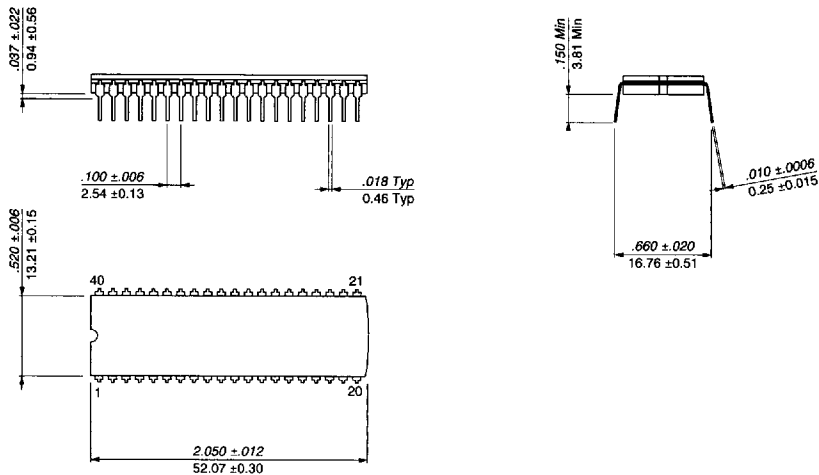
9 - PACKAGE MECHANICAL DATA

9.1 - 40 pins - DIL Ceramic Side Brazed



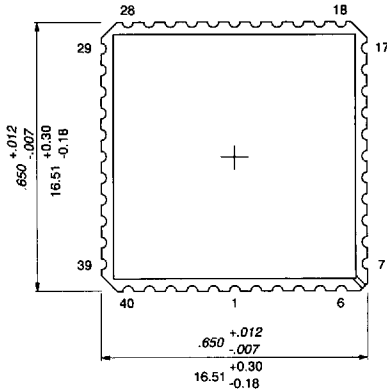
5

9.2 - 40 pins - DIL Cerdip

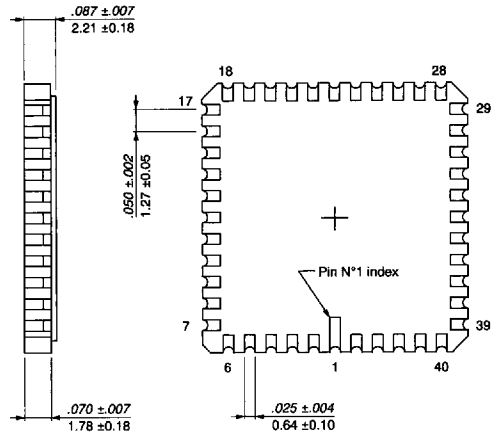


9.3 - 44 pins - Leadless Ceramic Chip Carrier

TOP VIEW

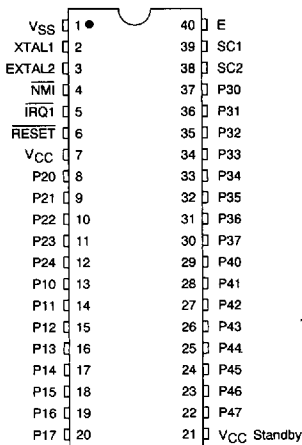


BOTTOM VIEW

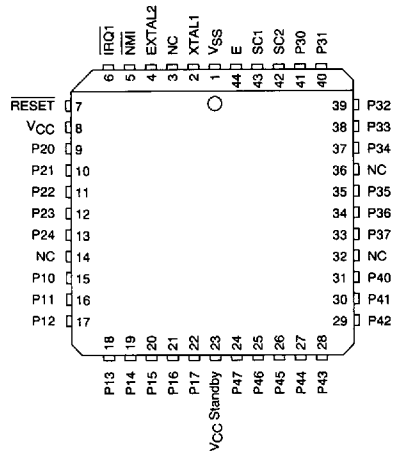


10 - TERMINAL CONNECTIONS

10.1 - DIL 40 - Pin assignment



10.2 - LCCC 44 - Pin assignment



11 · ORDERING INFORMATION

11.1 · HI-REL product

| Commercial TMS Part-Number (see Note) | Norms | Package | Temperature range T _c (°C) | Frequency (MHz) | Drawing number |
|---------------------------------------|-----------------------|-----------------|---------------------------------------|-----------------|----------------|
| EF6803JMG/B | NFC 96883 - Class G | DIL Cerdip | - 55 / + 125 | 1 | Data-sheet |
| EF6803CMG/B | NFC 96883 - Class G | DIL Side Brazed | - 55 / + 125 | 1 | Data-sheet |
| EF6803EMG/B | NFC 96883 - Class G | LCCC | - 55 / + 125 | 1 | Data-sheet |
| EF68A03JMG/B | NFC 96883 - Class G | DIL Cerdip | - 55 / + 125 | 1.5 | Data-sheet |
| EF68A03CMG/B | NFC 96883 - Class G | DIL Side Brazed | - 55 / + 125 | 1.5 | Data-sheet |
| EF68A03EMG/B | NFC 96883 - Class G | LCCC | - 55 / + 125 | 1.5 | Data-sheet |
| EF6803JMB/C | MIL STD 883 - Class B | DIL Cerdip | - 55 / + 125 | 1 | Data-sheet |
| EF6803CMB/C | MIL STD 883 - Class B | DIL Side Brazed | - 55 / + 125 | 1 | Data-sheet |
| EF68A03JMB/C | MIL STD 883 - Class B | DIL Cerdip | - 55 / + 125 | 1.5 | Data-sheet |
| EF68A03CMB/C | MIL STD 883 - Class B | DIL Side Brazed | - 55 / + 125 | 1.5 | Data-sheet |

Note : THOMSON COMPOSANTS MILITAIRES ET SPATIAUX.

11.2 · Standard product

| Commercial TMS Part-Number (see Note) | Norms | Package | Temperature range T _c (°C) | Frequency (MHz) | Drawing number |
|---------------------------------------|--------------|-----------------|---------------------------------------|-----------------|----------------|
| EF6803CV | TMS standard | DIL Side Brazed | - 40 / + 85 | 1 | Data sheet |
| EF6803JV | TMS standard | Cerdip DIL | - 40 / + 85 | 1 | Data sheet |
| EF68A03CV | TMS standard | DIL Side Brazed | - 40 / + 85 | 1.5 | Data sheet |
| EF68A03JV | TMS standard | Cerdip DIL | - 40 / + 85 | 1.5 | Data sheet |
| EF6803JM | TMS standard | Cerdip DIL | - 55 / + 125 | 1 | Data sheet |
| EF6803CM | TMS standard | DIL Side Brazed | - 55 / + 125 | 1 | Data sheet |
| EF6803EM | TMS standard | LCCC | - 55 / + 125 | 1 | Data sheet |
| EF68A03JM | TMS standard | Cerdip DIL | - 55 / + 125 | 1.5 | Data sheet |
| EF68A03CM | TMS standard | DIL Side Brazed | - 55 / + 125 | 1.5 | Data sheet |
| EF68A03EM | TMS standard | LCCC | - 55 / + 125 | 1.5 | Data sheet |
| EF6803C | TMS standard | DIL Side Brazed | 0 / + 70 | 1 | Data sheet |
| EF6803J | TMS standard | Cerdip DIL | 0 / + 70 | 1 | Data sheet |
| EF68A03C | TMS standard | DIL Side Brazed | 0 / + 70 | 1.5 | Data sheet |
| EF68A03J | TMS standard | Cerdip DIL | 0 / + 70 | 1.5 | Data sheet |
| EF68B03J | TMS standard | Cerdip DIL | 0 / + 70 | 2 | Data sheet |

Note : THOMSON COMPOSANTS MILITAIRES ET SPATIAUX.

5



EF6803 C M B/C

Type _____

Packages:

C = Ceramic DIL (side brased)
 E = Ceramic LCCC
 E1 = LCC+HOT Solder DIL
 J = Tin dipped Cerdip DIL

Temperature /Tcase:

M = -55°C/ +125°C
 V = -40°C/ +85°C
 _ = 0/ +70°C

Screening:

_ = Standard
 G/B = NFC 96883 Cl.G
 B/B = MIL STD 883 Cl.B Rev B
 B/C = MIL STD 883 Cl.B