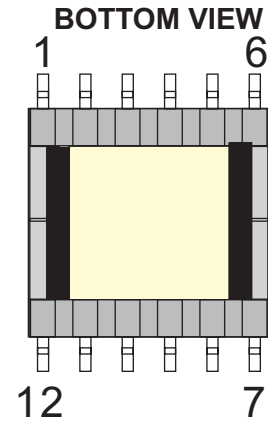
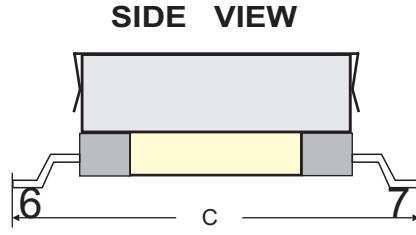
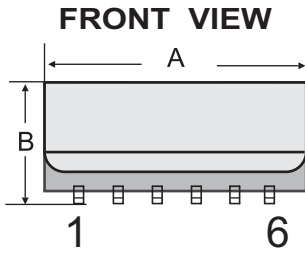
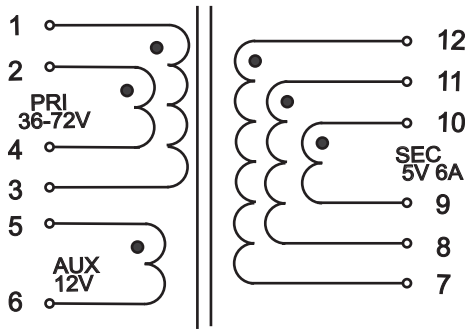


### 1. Mechanical Dimensions:



### 2. Schematic:

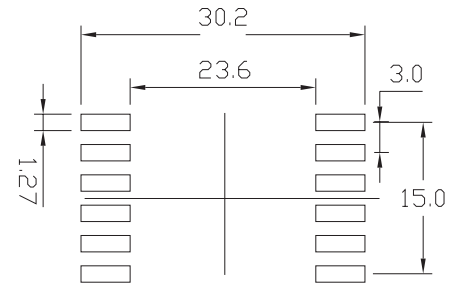


### Printing Information



Unit: mm

A MAX	B MAX	C MAX
22.0	12.0	30.0



Suggested  
PCB LAYOUT

Unit: mm Tolerances: +/-0.2

### 3. Electrical Characteristics :

Specifications: at 25°C. Operating Temperature -40 to +85°C

NO.	ITEM	TEST CONDITION	SPECIFICATION
1	Inductance	(1,2-3,4)@100kHz, 0.25V	42uH+/-10%.
2	DCR	(1,2-3,4) @ 25°C	0.080 Ω Max.
3		(5-6) @ 25°C	0.225 Ω Max.
4		(7,8,9-10,11,12) @ 25°C	0.005 Ω Max.
5	HI-POT	PRI TO SEC	1500Vac 1mA 2Sec.
6	HI-POT	PRI,SEC TO CORE	1000Vac 1mA 2Sec.
7	Leakage Inductance	(1,2-3,4) @100kHz,0.25Vac TIED (6,7,8)	1.6uH Max.
8	TURN RATIO	PRI:SEC	1:0.14
9	TURN RATIO	PRI:AUX	1:0.33