

EHW.3000

EDISWAN

EHW.3000

WATER COOLED TRIODE

GENERAL

The EHW.3000 is a triode designed for use as a radio-frequency amplifier or oscillator. The anode is water-cooled and is capable of dissipating up to 3 kilowatts, depending upon the class of service. The design minimizes lead inductance and makes the valve particularly suitable for high frequency applications.

RATING

Filament Voltage (volts)	V_f	8.0
Filament Current (amps)	I_f	80.0
Maximum Anode Voltage (volts)	$V_a(\max)$	7,500
Average Maximum Filament Emission (amps)	$F_{em(av)}$	4.5
Maximum Anode Dissipation (watts)	$P_a(\max)$	3,000
Mutual Conductance (mA/V)	G_m	• 6.5
Amplification Factor	μ	• 55
Anode Impedance (ohms)	R_a	• 10,000
Maximum Operating Frequency at full rating		:10 Mc/s

• Taken at $V_a = 7,000v$; $I_a = 400 mA$.

: At higher frequencies the maximum permissible anode voltages and inputs must be reduced.

INTER-ELECTRODE CAPACITANCES

Anode/Grid (μpF)	$C_{a,g}$	11.0
Anode/Filament (μpF)	$C_{a,f}$	1.0
Grid/Filament (μpF)	$C_{g,f}$	12.0

WATER FLOW 2 gallons per minute

AIRFLOW 15 Cubic feet should be directed on to the seals.

DIMENSIONS

Maximum Overall Length (mm)	245
Maximum Diameter (mm)	70
Approximate Nett Weight (lb)	4
Approximate Packed Weight (lb)	11
Approximate Export Packed Weight (lb)	14

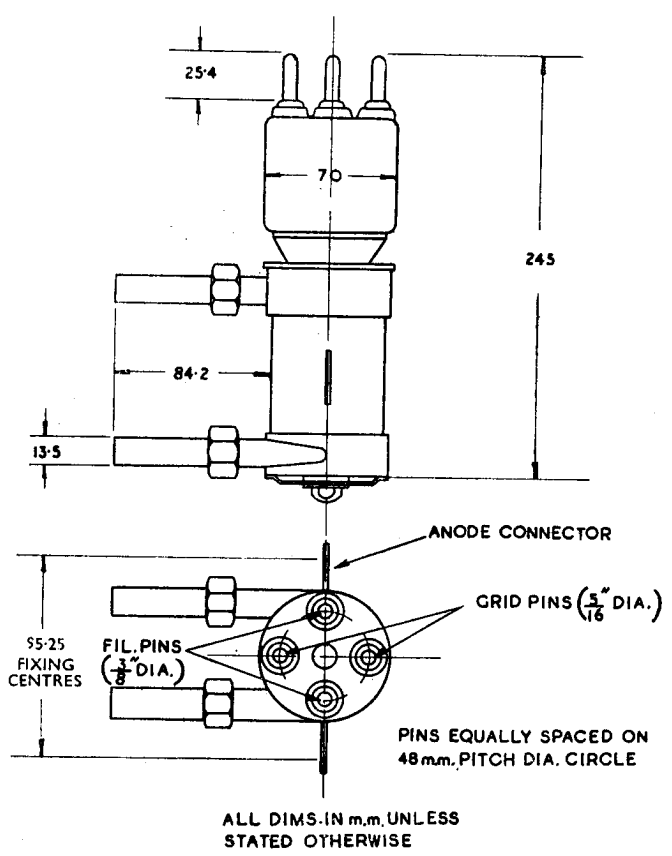
MOUNTING POSITION - Vertical

EHW.3000

EDISWAN

EHW.3000

WATER COOLED TRIODE

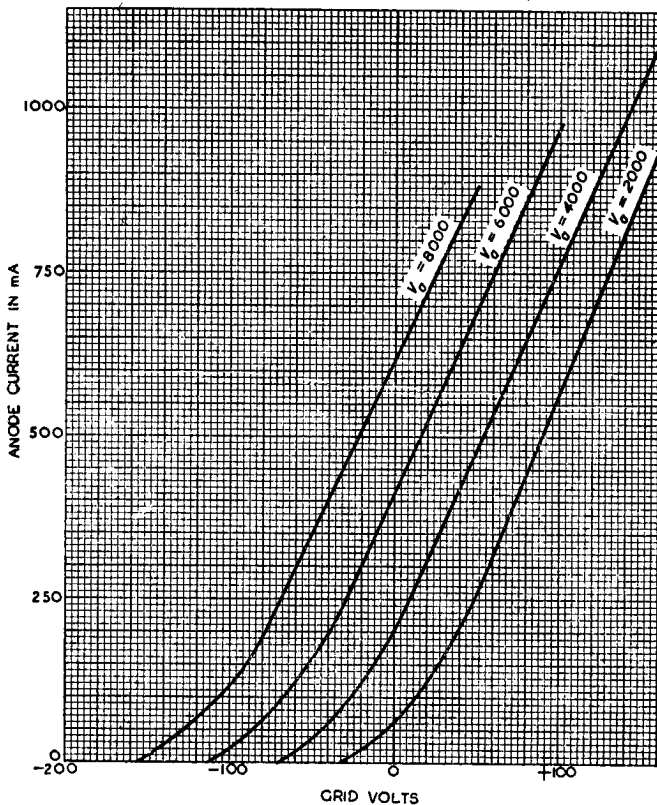


EHW.3000

EDISWAN

EHW.3000
WATER COOLED TRIODE

AVERAGE CHARACTERISTICS



EDISWAN

EHW.3000

WATER COOLED TRIODE

AVERAGE CHARACTERISTICS

