

General Description

The Topway ELM2007 is a high-voltage driver designed for driving EL lamp of up to 100cm². The input supply voltage range from 4.5V to 12V. The device works under switch mode using a single inductor and maximum +85V output can be applied to the EL lamp.

www.DataSheet4U.com

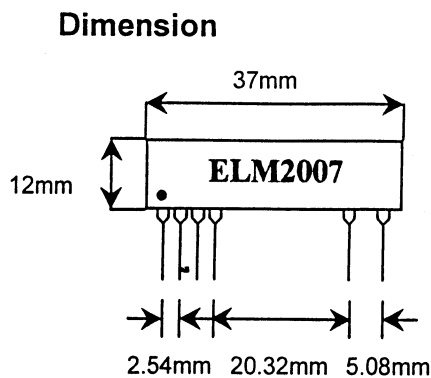
Features

- Processed with SMT impact
- Less than 7mm in thickness
- Wide range operation voltage 4.5~12V
- Wide output load range from 0 to 100cm²
- Firm specification
- On/off switch

Environment

- | | |
|-------------------------------|-----------------|
| • Operating temperature range | 0~50°C |
| • Operating humidity range | less than 90%RH |
| • Stored temperature range | -25~75°C |
| • Stored humidity range | less than 95%RH |

Package Configuration



Pin Description

- | | |
|---|--------------|
| 1 | Vin |
| 2 | GND |
| 3 | On/off |
| 4 | Inter signal |
| 5 | VA |
| 6 | VB |

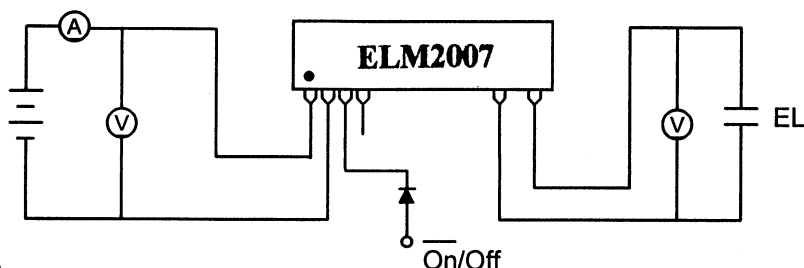
TOPWAY Electronic Co., Ltd.

416Rm. Kangle Bld. Huaqiang North Road, Shenzhen Guangdong China 518031

Telephone: 86-755-3354422, 3264347 Fax: 86-755-3354422

E-mail: topway@szonline.net

Application



***Note:**

•Vin applied to On/Off the output will be shut down.

Electrical Characteristics

Symbol	Parameter	Min.	Typ	Max.	Units
I_{in}	Vdd supply current	26		150	mA
VA-B	Output Voltage across lamp	80	85	90	Vp-p
FEL	VA-B output drive frequency	400	500	600	Hz

Recommended Operating Condition

Symbol	Parameter	Min.	Typ	Max.	Units
Vdd	Supply voltage	4.5		12	V
CL	Load capacitance	0		100	CM ²
TA	Operating temperature	0		50	°C

TOPWAY Electronic Co., Ltd.

416Rm. Kangle Bld. Huaqiang North Road, Shenzhen Guangdong China

518031

Telephone: 86-755-3354422, 3264347 Fax: 86-755-3354422

E-mail: topway@szone.net