

TUNING INDICATOR with two systems of different sensitivity
 INDICATEUR D'ACCORD avec deux systèmes de sensibilité
 différente

ABSTIMMANZEIGERÖHRE mit zwei Systemen verschiedener Emp-
 findlichkeit

Heating : indirect by A.C. or D.C.
 series or parallel supply

Chauffage: indirect par C.A. ou C.C.
 alimentation parallèle ou
 série

Heizung : indirekt durch Wechsel-
 oder Gleichstrom; Serien-
 oder Parallelspeisung

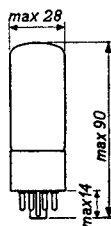
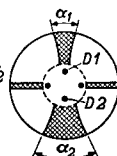
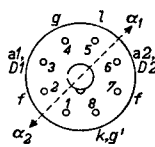
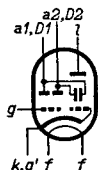
$$V_f = 6,3 \text{ V}$$

$$I_f = 200 \text{ mA}$$

Dimensions in mm

Dimensions en mm

Abmessungen in mm



Base, culot, Sockel: OCTAL

Operating characteristics

Caractéristiques d'utilisation

Betriebsdaten

$V_b = V_l$	=	200	250 V
$R_{a1} = R_{a2}$	=	1,0	1,0 MΩ
I_l ($V_g = 0 \text{ V}$)	=	1,4	2,0 mA
V_g ($\alpha_1 = \alpha_2 = 90^\circ$)	=	0	0 V
V_g ($\alpha_1 = \text{min.}$)	=	-4,2	-5 V
V_g ($\alpha_2 = \text{min.}$)	=	-12,5	-16 V

Limiting values

Caractéristiques limites

Grenzdaten

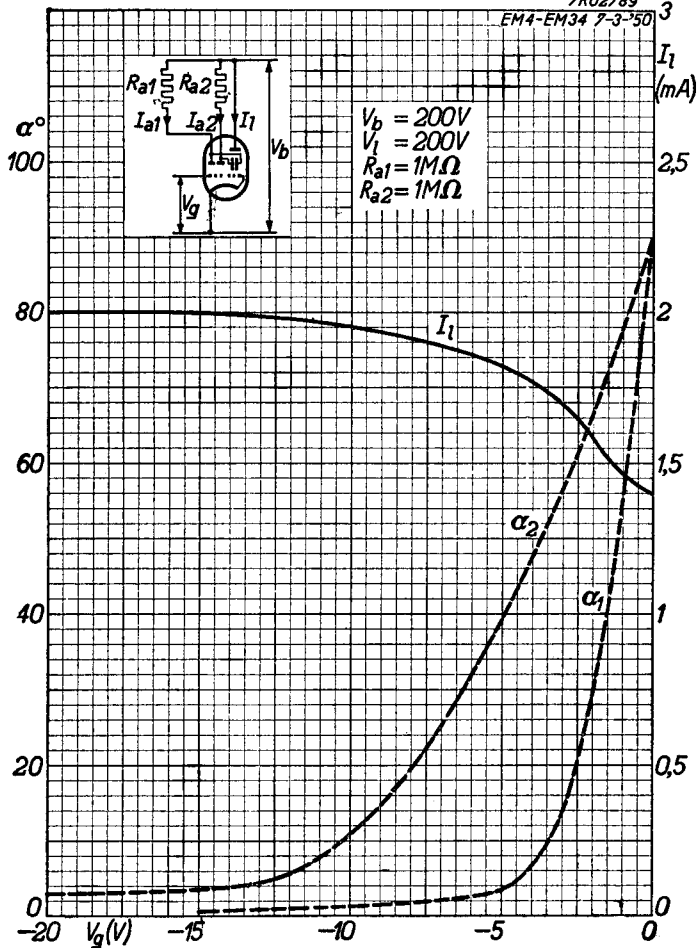
V_{a10}	= max.	550 V	V_l	= max.	300 V
V_{a1}	= max.	300 V	$-V_g$ ($I_g = +0,3 \mu\text{A}$)	= max.	1,3 V
V_{a20}	= max.	550 V	R_g	= max.	3 MΩ
V_{a2}	= max.	300 V	R_{kf}	= max.	20 kΩ
V_{l0}	= max.	550 V	V_{kf}	= max.	100 V

PHILIPS

EM34

7R02789

EM4-EM34 7-3-50

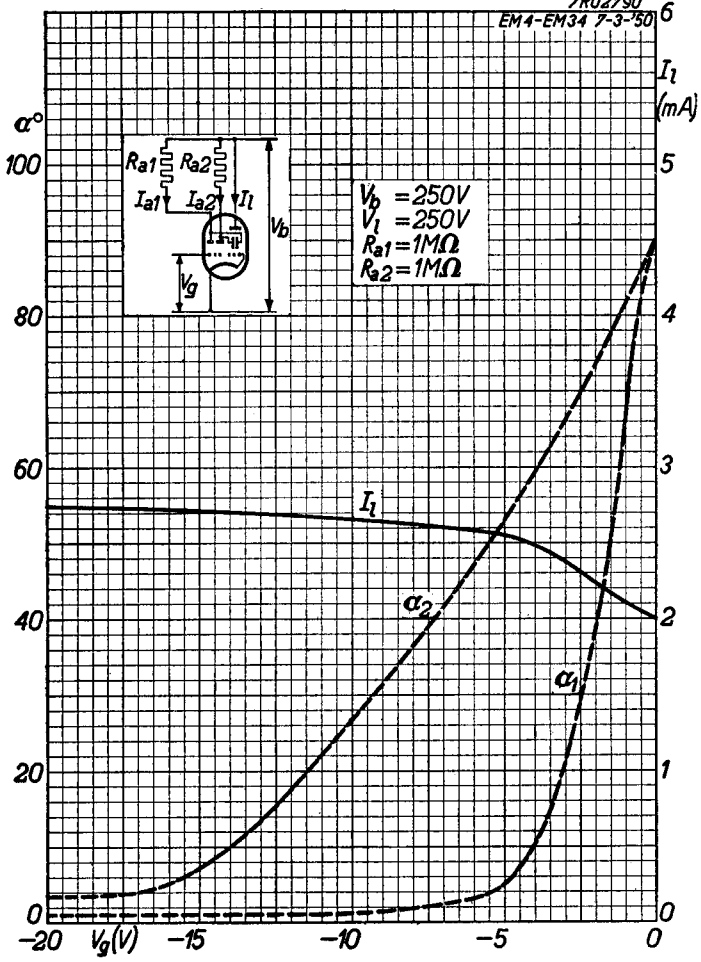


EM34

PHILIPS

7R02790

EM4-EM34 7-3-50



PHILIPS



*Electronic
Tube*

HANDBOOK

page	EM34 sheet	date
1	1	1956.01.01
2	A	1956.01.01
3	B	1956.01.01
4	FP	1999.07.10