

EuroMag Series PCB Mount Terminal Blocks



EM3923 Series Euro-Mag Terminal Blocks 3.50 Centers; Modular

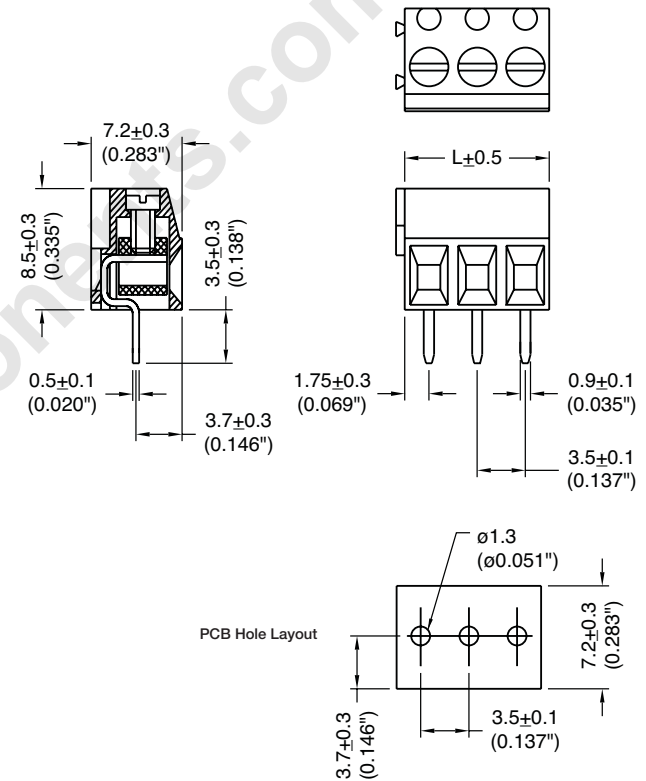
SPECIFICATIONS

- Rating:** 8A, 300V
- Center Spacing:** 0.138" (3.50mm)
- Wire Range:** #16-26 AWG
- Housing Material:** UL rated 94V0 Thermoplastic
- Contact Material:** Brass Tin-Plated
- Cage Clamp:** Brass, Nickel-Plated
- Screw Size:** M2.0 Nickel-Plated Steel
- Operating Temperature:** 105°C (221°F) max., -40°C (-67°F) min.
- Torque Rating:** 2.5 lb-in.
- Recommended PCB Hole Diameters:** 0.055" (1.40mm)
- Construction:** Modular design features dovetails for interlocking to achieve longer lengths
- Agency Information:** US File E62622; CE Certified



EM392305

Dimensions - mm (in)



| Poles | L (mm) | Poles | L (mm) |
|-------|--------|-------|--------|
| 2 | 7.0 | 14 | 49.5 |
| 3 | 10.5 | 15 | 52.5 |
| 4 | 14.0 | 16 | 56.0 |
| 5 | 17.5 | 17 | 59.5 |
| 6 | 21.0 | 18 | 63.0 |
| 7 | 24.5 | 19 | 66.5 |
| 8 | 28.0 | 20 | 70.0 |
| 9 | 31.5 | 21 | 73.5 |
| 10 | 35.0 | 22 | 77.0 |
| 11 | 38.5 | 23 | 80.5 |
| 12 | 42.0 | 24 | 84.0 |
| 13 | 45.5 | | |

To convert to inches, divide by 25.4

Part Numbering System

