

1.3MHz 1.5A, Synchronous Step-Down Regulator

General Description

EML3417 is designed with high efficiency step down DC/DC converter for portable devices applications. It features with extreme low quiescent current with no load which is the best fit for extending battery life during the standby mode. The device operates from 2.5V to 5.5V input voltage and up to 1.5A output current capability. High 1.3MHz internal frequency makes small surface mount inductors and capacitors possible and reduces overall PCB board space. Further, build-in synchronous switch makes external Schottky diode is no longer needed and efficiency is improved. EML3417 is designed base on pulse width modulation (PWM) for low output voltage ripple and fixed frequency noise, low dropout mode provides 100% duty cycle operation. Low reference voltage is designed for achieving regulated output down to 0.6V. The device is available in an adjustable version. The EML3417 is available in DFN-6 package.

Features

- Achieve 95% efficiency
- Input Voltage : 2.5V to 5.5V
- Output Current up to 1.5A
- Reference voltage 0.6V
- Quiescent Current 240μ A with No Switching
- Internal switching frequency 1.3MHz
- No Schottky Diode needed
- Low Dropout Operation: 100% Duty Cycle
- Shutdown current < 1μ A
- Excellent Line and Load Transient Response
- Over-current and Over-temperature Protection

Applications

- Blue-Tooth devices
- Cellular and Smart Phones
- Personal multi-media Player (PMP)
- Wireless networking
- Digital Still Cameras
- Portable applications

Typical Application (adjustable)

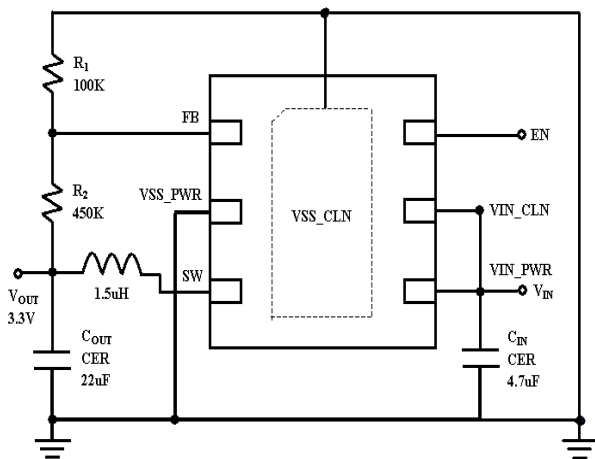


Fig. 1

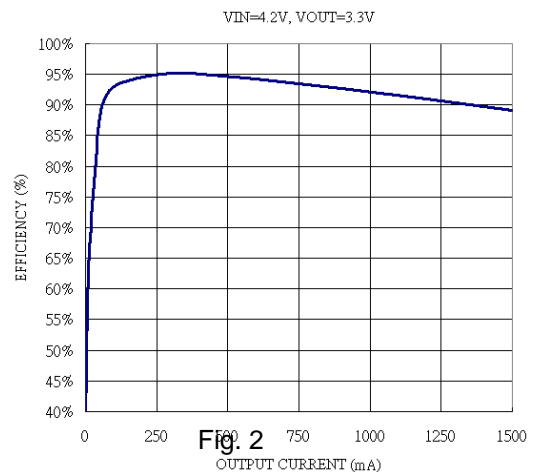
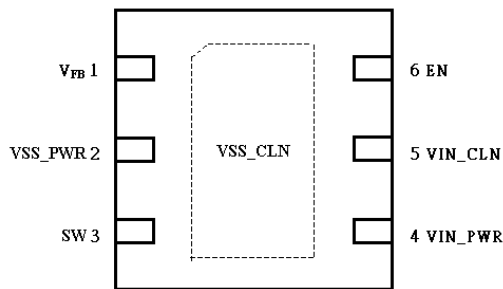


Fig. 2

Order, Mark & Packing Information

Package	Vout	Product ID	Marking	Packing
TDFN-6	adjustable	EML3417-00FF06NRR		5K units Tape & Reel

Package configuration



DFN-6, Adjustable

EML3417-00FF06NRR

00 Adjustable
 FF06 TDFN-6 Package
 NRR RoHS & Halogen free
 Rating: -40 to 85°C
 Package in Tape & Reel

Pin Functions

Pin #	Pin Name	Function
1	V _{FB} (Adjustable)	Feedback Pin. Receives the feedback voltage from an external resistive divider across the output.
	V _{out} (Fixed voltage)	Output Voltage Pin. An internal resistive divider divides the output voltage down for comparison to the internal reference voltage.
2	VSS_PWR	Power Ground Pin.
3	SW	Switch Pin. Must be connected to Inductor. This pin connects to the drains of the internal main and synchronous power MOSFET switches.
4	VIN_PWR	Power Input Pin. Must be closely decoupled to GND pin with a 4.7μF or greater ceramic capacitor.
5	VIN_CLN	Analog Input Pin. Must be closely decoupled to GND pin with a 4.7μF or greater ceramic capacitor.
6	EN	Enable Pin. Minimum 1.2V to enable the device. Maximum 0.4V to shut down the device. Do not leave this pin floating and enable the chip after Vin is in the input voltage range.
Exposed pad	VSS_CLN	Analog Ground Pin.

Absolute Maximum Ratings

Devices are subjected to failure if they stay above absolute maximum ratings.

Input Voltage ----- -0.3V to 6V
 EN, V_{FB} Voltages ----- -0.3V to V_{IN}
 SW Voltage ----- -0.3V to (V_{IN} + 0.3V)
 PMOS Switch Source Current (DC) ----- 2A
 NMOS Switch Sink Current (DC) ----- 2A
 Peak Switch Sink and Source Current ----- 3.5A

Operating Temperature Range ----- -40°C to 85°C
 Junction Temperature (Notes 1, 3) ----- 125°C
 Storage Temperature Range ----- -65°C to 150°C
 Lead Temperature (Soldering, 10 sec) ----- 260°C
 ESD Susceptibility HBM ----- 2KV
 MM ----- 200V

Thermal data

Thermal resistance	Parameter	Value
θ_{JA}	Junction-ambient	55°C/W
θ_{JC}	Junction-case	10°C/W

Electrical Characteristics

The ● denotes specifications which apply over the full operating temperature range, otherwise specifications are T_A = 25°C. V_{IN} = 5V unless otherwise specified.

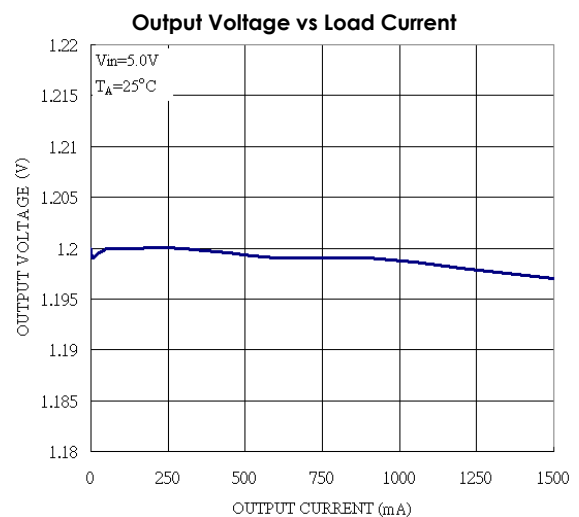
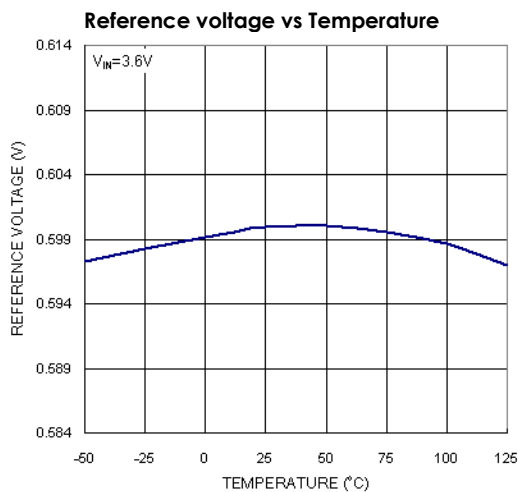
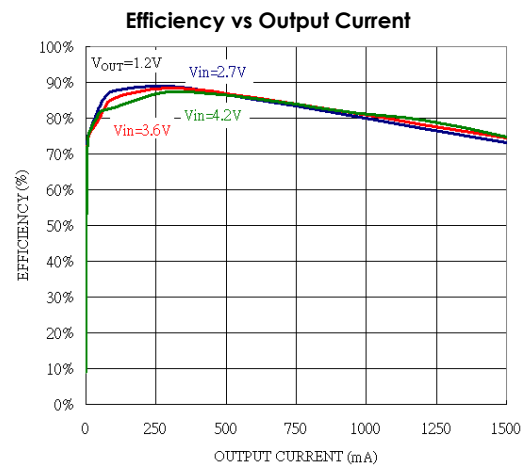
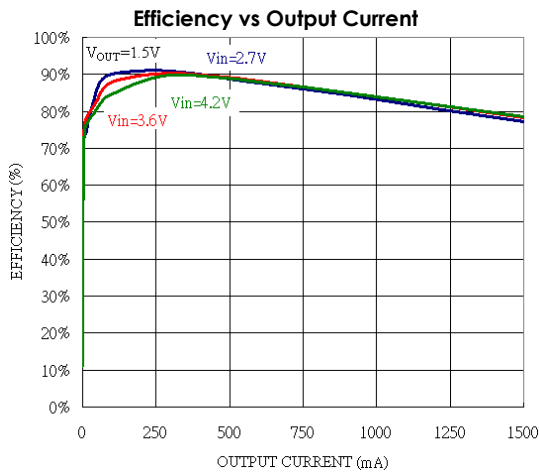
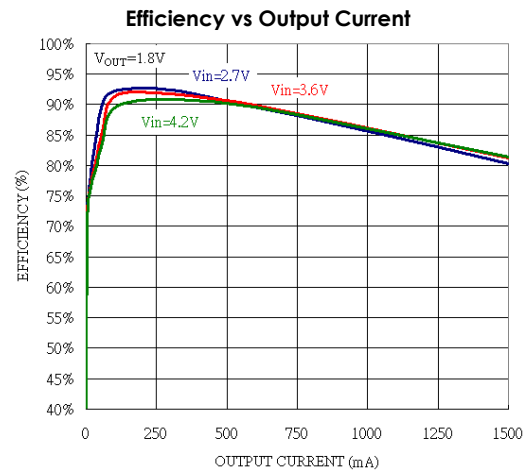
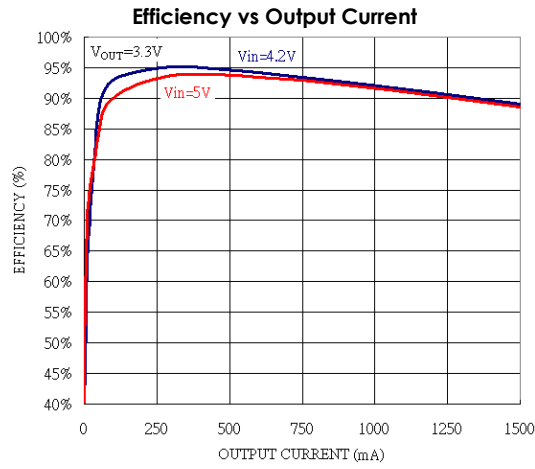
Symbol	Parameter	Conditions	Min	Typ	Max	Units	
I _{VFB}	Feedback Current				±100	nA	
V _{FB}	Regulated Feedback Voltage	T _A = 25°C	0.588	0.6	0.612	V	
		-40°C ≤ T _A ≤ 85°C	● 0.585	0.6	0.615		
V _{OUT} %	Output Voltage Accuracy		● -3		3	%	
Δ V _{FB}	Reference Voltage Line Regulation	V _{IN} = 2.5V to 5.5V	●		0.4	%/V	
Δ V _{OVL}	Output Over-voltage Lockout	Δ V _{OVL} = V _{OVL} - V _{FB} , EML3417		20	50	80	mV
		Δ V _{OVL} = V _{OVL} - V _{OUT} , EML3417-Fixed		2.5	7.8	13	%
Δ V _{OUT}	Output Voltage Line Regulation	V _{IN} = 2.5V to 5.5V	●		0.4	%/V	
I _{PK}	Peak Inductor Current	V _{IN} = 3V, V _{FB} = 0.5V or V _{OUT} = 90%, Duty Cycle < 35%		2.4		A	
V _{LOADREG}	Output Voltage Load Regulation	I _{OUT} = 10mA to 1.5A		0.2		%/A	
I _S	Quiescent Current (Note 2)	V _{FB} = 0.5V or V _{OUT} = 90%		240	340	μ A	
	Shutdown	V _{EN} = 0V, V _{IN} = 4.2V		0.1	1	μ A	
f _{OSC}	Oscillator Frequency	V _{FB} = 0.6V or V _{OUT} = 100%	● 1.04	1.30	1.56	MHz	
R _{PFET}	R _{DS(ON)} of PMOS	I _{SW} = 750mA		0.18		Ω	
R _{NFET}	R _{DS(ON)} of NMOS	I _{SW} = -750mA		0.16		Ω	
I _{LSW}	SW Leakage	V _{EN} = 0V, V _{SW} = 0V or 5V, V _{IN} = 5V			±1	μ A	
V _{EN}	Enable Threshold		● 1.2			V	
	Shutdown Threshold		●		0.4	V	
I _{EN}	EN Leakage Current		●		±1	μ A	

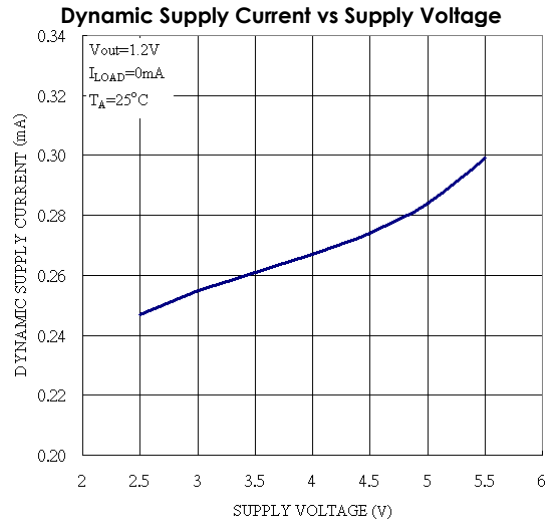
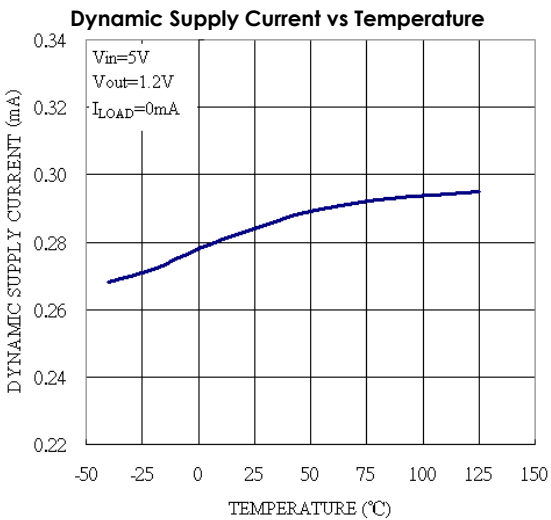
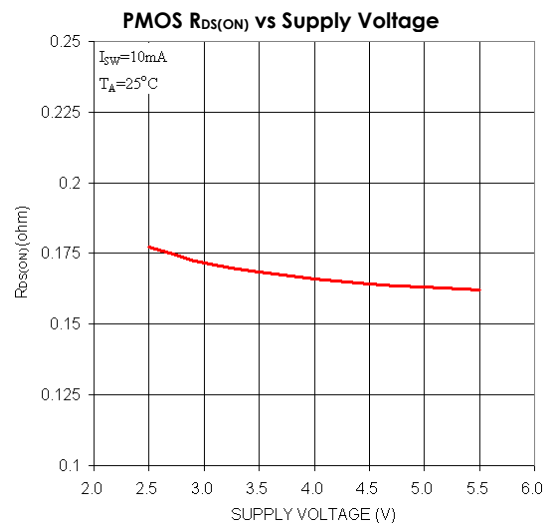
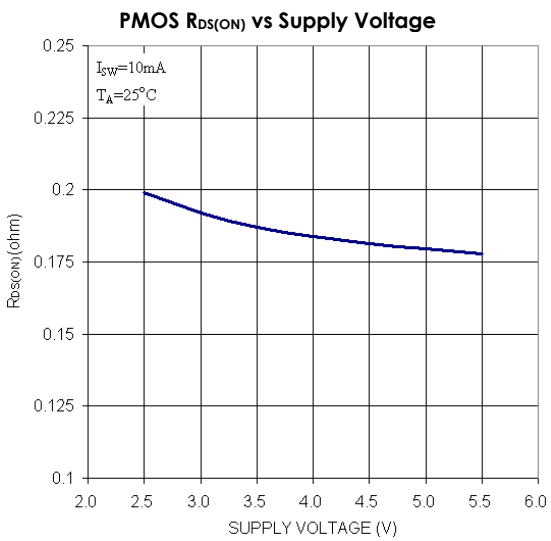
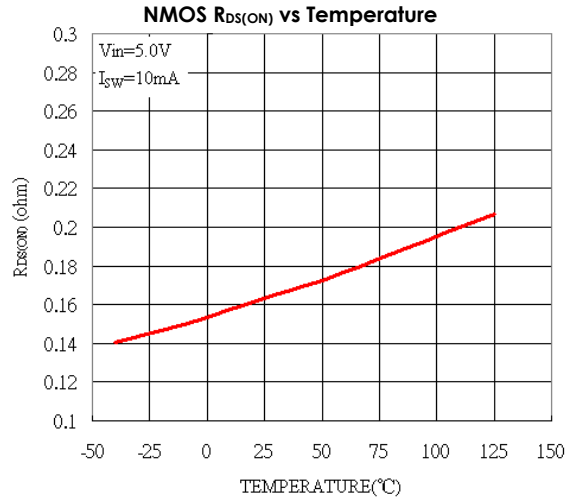
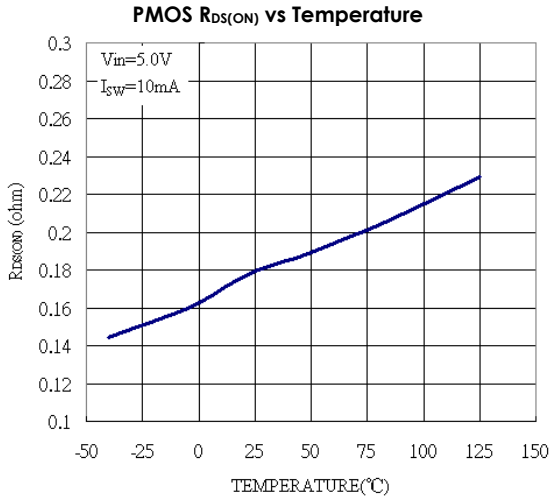
Note 1: T_J is a function of the ambient temperature T_A and power dissipation P_D (T_J = T_A + (P_D)(55°C/W))

Note 2: Dynamic quiescent current is higher due to the gate charge being delivered at the switching frequency.

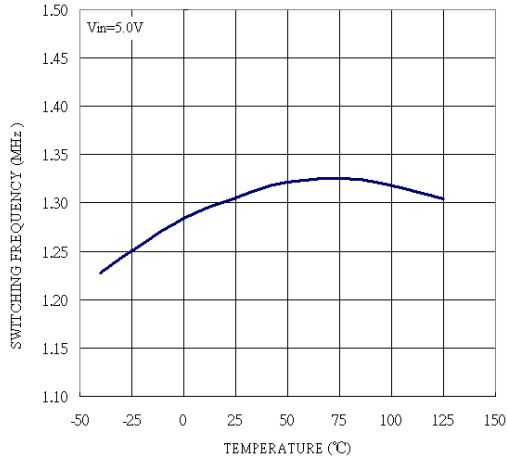
Note 3: This IC is build-in over-temperature protection to avoid damage from overload conditions.

Typical Performance Characteristics

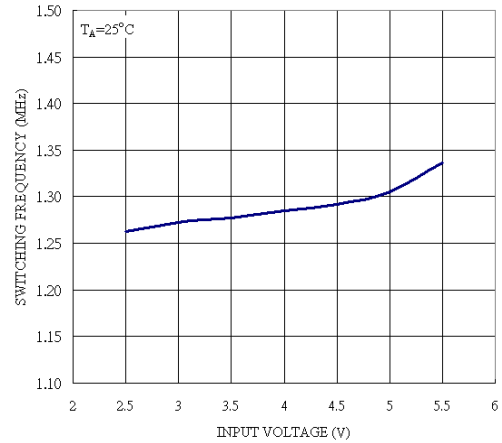




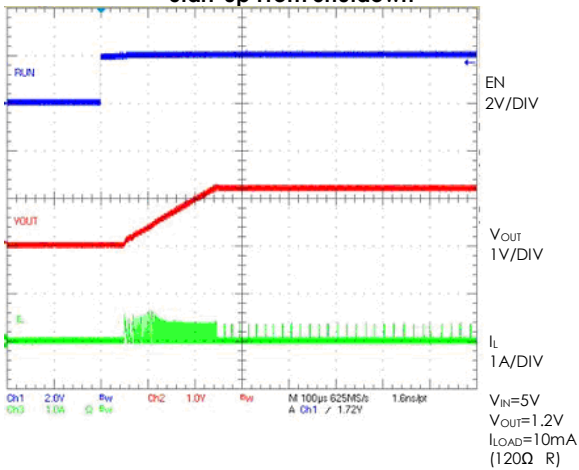
Switching Frequency vs Temperature



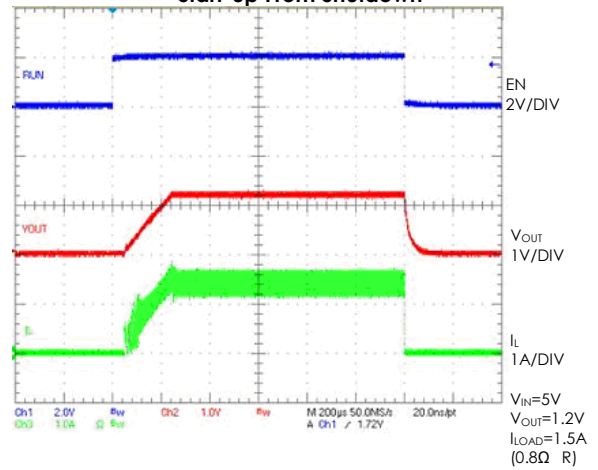
Switching Frequency vs Supply Voltage



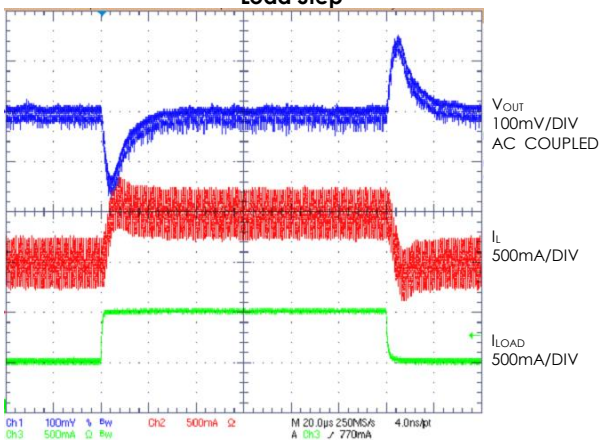
Start-up From Shutdown



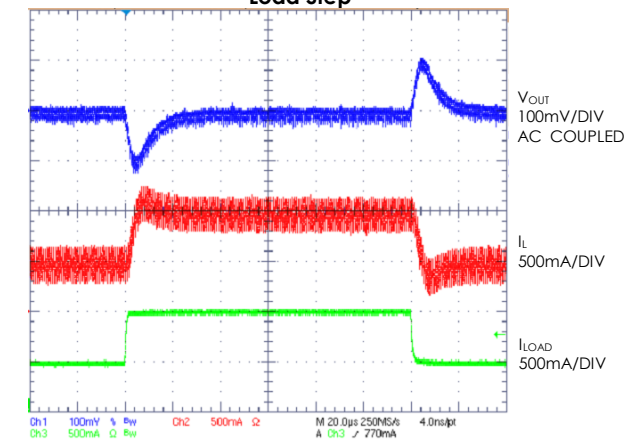
Start-up From Shutdown



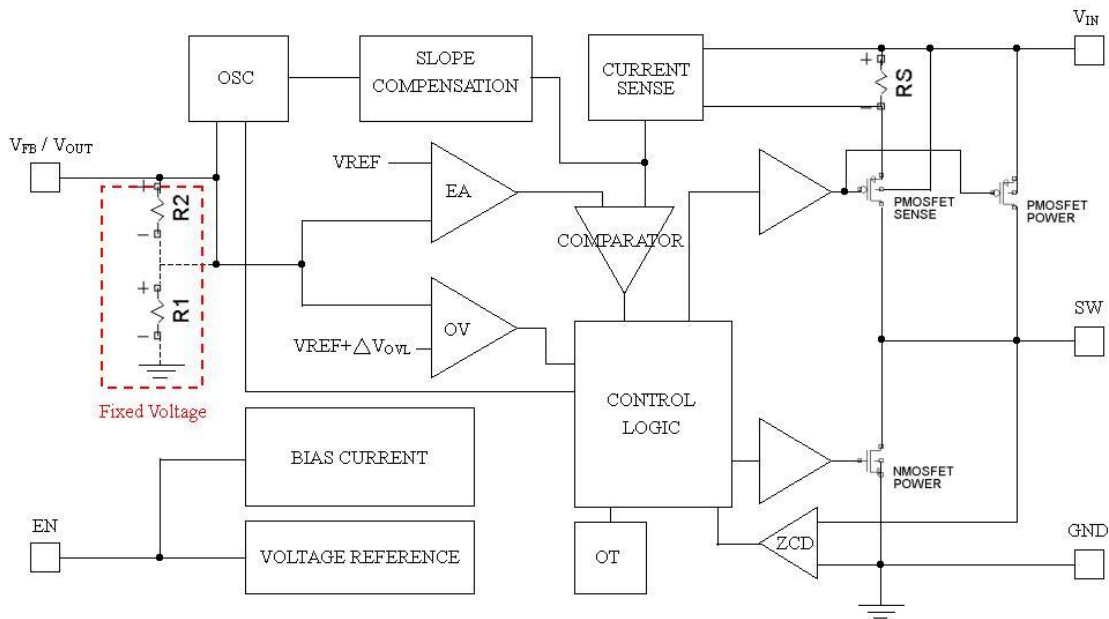
Load Step



Load Step



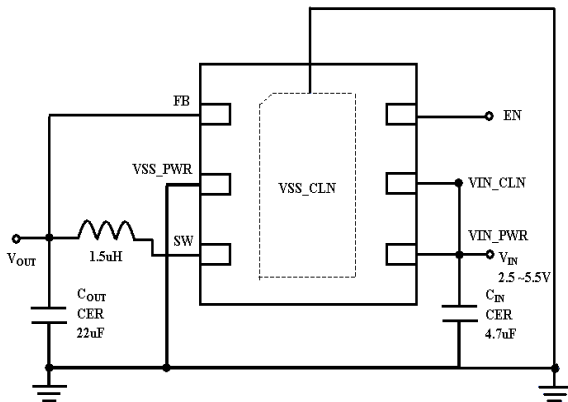
Functional Block Diagram



Applications

The typical application circuit of adjustable version is shown in Fig.1.

Fixed voltage version is shown below:



Inductor Selection

Basically, inductor ripple current and core saturation current are two factors considered to decide the Inductor value.

$$\Delta I_L = \frac{1}{f \cdot L} V_{OUT} \left(1 - \frac{V_{OUT}}{V_{IN}} \right) \quad \text{Eq. 1}$$

The Eq. 1 shows the inductor ripple current is a function of frequency, inductance, Vin and Vout. It is recommended to set ripple current to 40% of max. load current. A low ESR inductor is preferred.

CIN and COUT Selection

A low ESR input capacitor can prevent large voltage transients at VIN. The RMS current of input capacitor is required larger than IRMS calculated by:

$$I_{RMS} \cong I_{OMAX} \frac{\sqrt{V_{OUT} (V_{IN} - V_{OUT})}}{V_{IN}} \quad \text{Eq. 2}$$

ESR is an important parameter to select COUT. The output ripple VOUT is determined by:

$$\Delta V_{OUT} \cong \Delta I_L \left(ESR + \frac{1}{8 \cdot f \cdot C_{OUT}} \right) \quad \text{Eq. 3}$$

Higher values, lower cost ceramic capacitors are now available in smaller sizes. These ceramic capacitors have high ripple currents, high voltage ratings and low ESR that make them ideal for switching regulator applications. Optimize very low output ripple and small circuit size is doable from Cout selection since Cout does not affect the internal control loop stability. It is recommended to use the X5R or X7R which have the best temperature and voltage characteristics of all the ceramics for a given value and size.

Output Voltage (EML3417 adjustable)

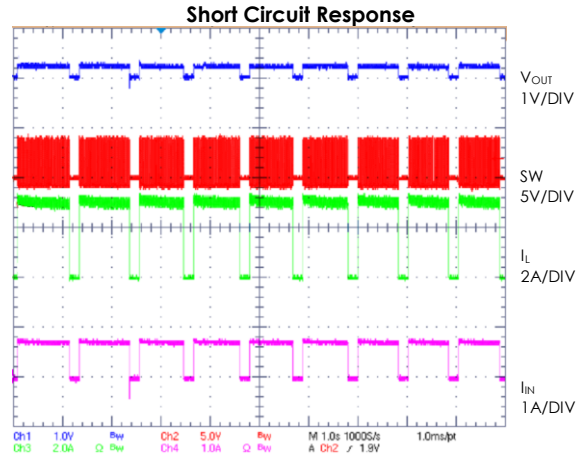
In the adjustable version, the output voltage can be determined by:

$$V_{OUT} = 0.6 V \left(1 + \frac{R_2}{R_1} \right) \quad \text{Eq. 4}$$

Short Circuit Behavior

EML3417 has over-current and over-temperature protection.

Over-current protection cycle by cycle limits P-driver FET current to prevent inductor current from losing control. Over-temperature protection function turns off driver FETs when junction temperature is high and recovers to normal operation after it is cool enough. When EML3417 is used to transfer Vin=5V to Vout=1.2V, shorting Vout to ground makes over-current and over-temperature protection active. The waveform is shown as the following diagram.



Thermal Considerations

Although thermal shutdown is build-in in EML3417 that protect the device from thermal damage, the total power dissipation that EML3417 can sustain should be base on the package thermal capability. The formula to ensure the safe operation is shown in Note 1.

To avoid the EML3417 from exceeding the maximum junction temperature, the user will need to do some thermal analysis.

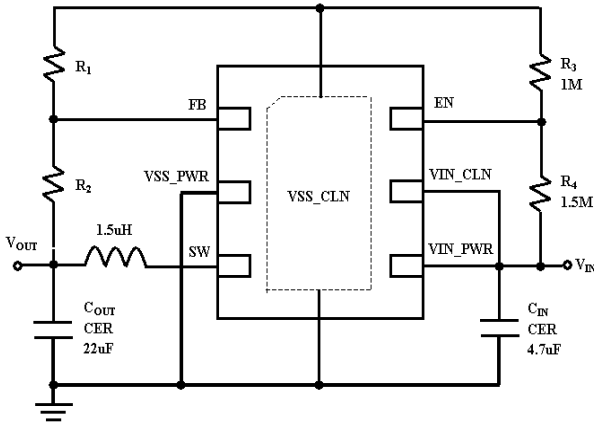
Guidelines for PCB Layout

To ensure proper operation of the EML3417, please note the following PCB layout guidelines:

1. The GND trace, the SW trace and the VIN trace should be kept short, direct and wide.
2. VFB pin must be connected directly to the feedback resistors. Resistive divider R1/R2 must be connected and parallel to the output capacitor COUT.
3. The Input capacitor CIN must be connected to pin VIN as closely as possible.
4. Keep SW node away from the sensitive VFB node since this node is with high frequency and voltage swing.
5. Keep the (-) plates of CIN and COUT as close as possible.
6. Connect all analog grounds to a common node and connect the common node to power ground through an independent path.

Self-Enable Application

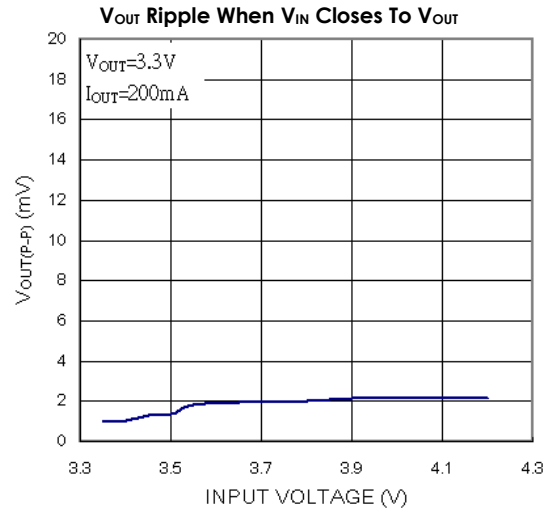
A self-enable function could be used when EML3417 is connected as the following diagram:



The resistor ratio R3:R4=1:1.5 is recommended.

Output Voltage Ripple When VIN Closes To VOUT

EML3417 goes into LDO mode when input voltage closes to output voltage. The transition from PWM mode to LDO mode is smooth. Bottom diagram shows the relationship of output voltage ripple versus input voltage when output voltage is 3.3V and EML3417 provides 200mA load current.



Design Example

Assume the EML3417 is used in a single lithium-ion battery-powered application. The VIN range will be about 2.7V to 4.2V. Output voltage is 1.8V.

With this information we can calculate L using equation:

$$L = \frac{1}{f \cdot \Delta I_L} V_{OUT} \left(1 - \frac{V_{OUT}}{V_{IN}} \right)$$

Substituting $V_{OUT} = 1.8V$, $V_{IN} = 4.2V$, $\Delta I_L = 600mA$ and $f = 1.3MHz$ in eq. 1 gives:

$$L = \frac{1.8V}{1.3MHz \cdot 600mA} \left(1 - \frac{1.8V}{4.2V} \right) = 1.32\mu H$$

A 1.5μH inductor could be chose with this application.

A greater inductor with less equivalent series resistance makes best efficiency. CIN will require an RMS current rating of at least $I_{LOAD(MAX)}/2$ and low ESR. In most cases, a ceramic capacitor will satisfy this requirement.

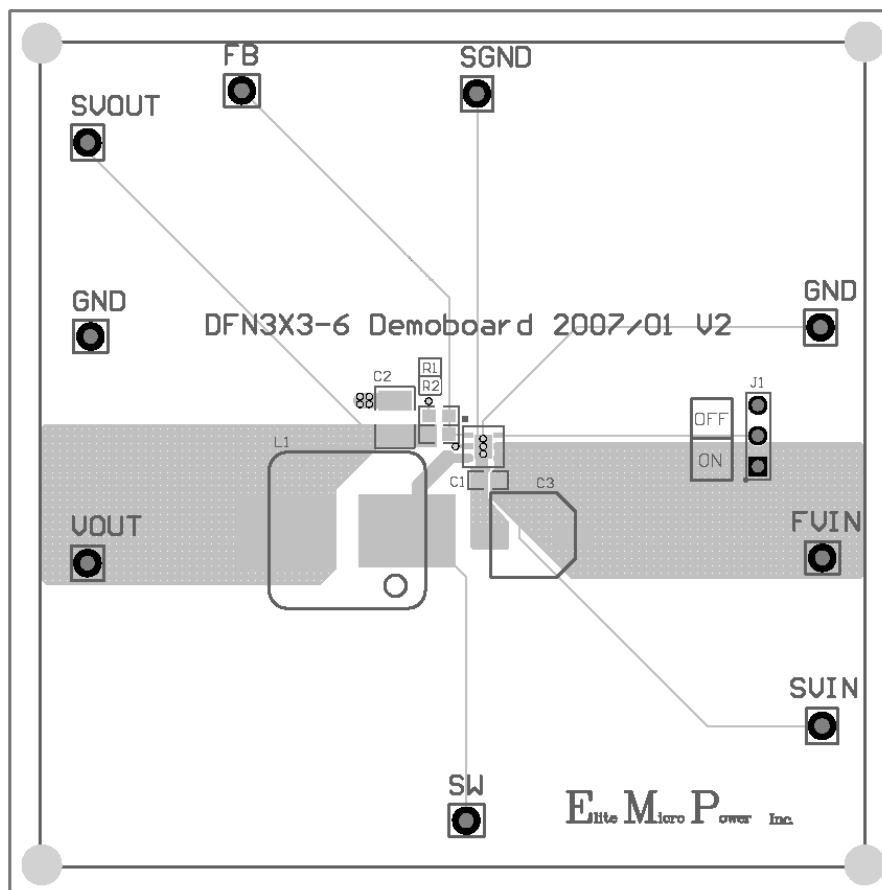
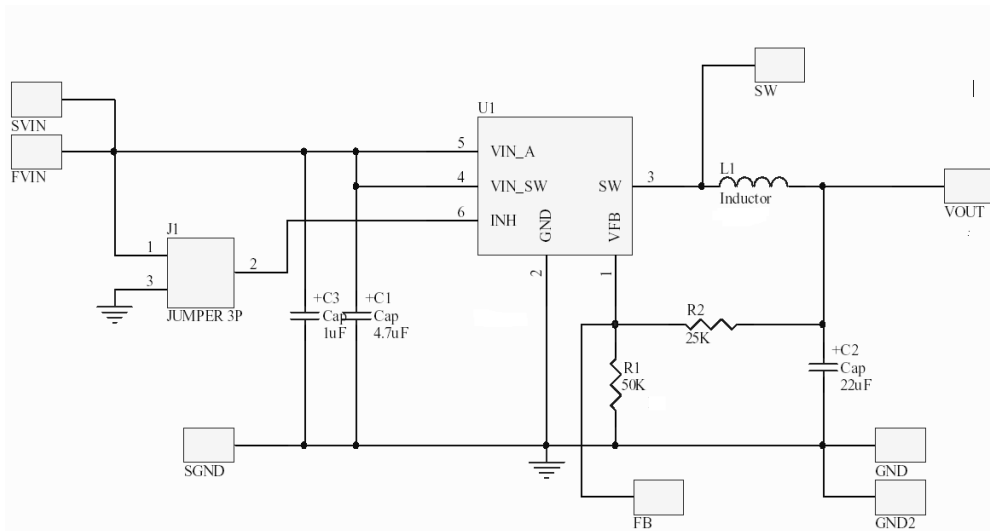
Recommended Components

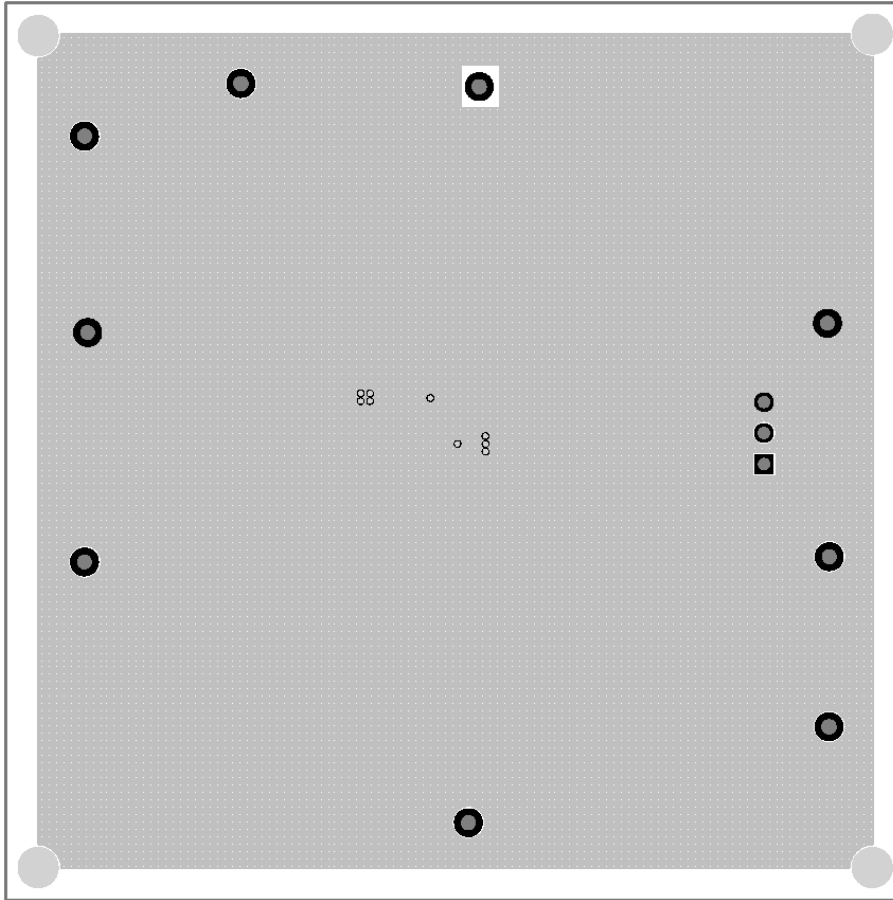
Supplier	Inductance (μH)	I _{sat} (A)	DCR _{max} (mΩ)	Dimensions (mm)	Part Number
Coilcraft	1.5	14	13	12.3 x 12.3 x 6	MSS1260-152NLB

Supplier	Capacitance (μF)	Package	Part Number
YAGEO	4.7	0805	CC0805KXX5R6BB475
TAIYO YUDEN	22	1812	EMK432BJ226KM-T

Application (Continued)

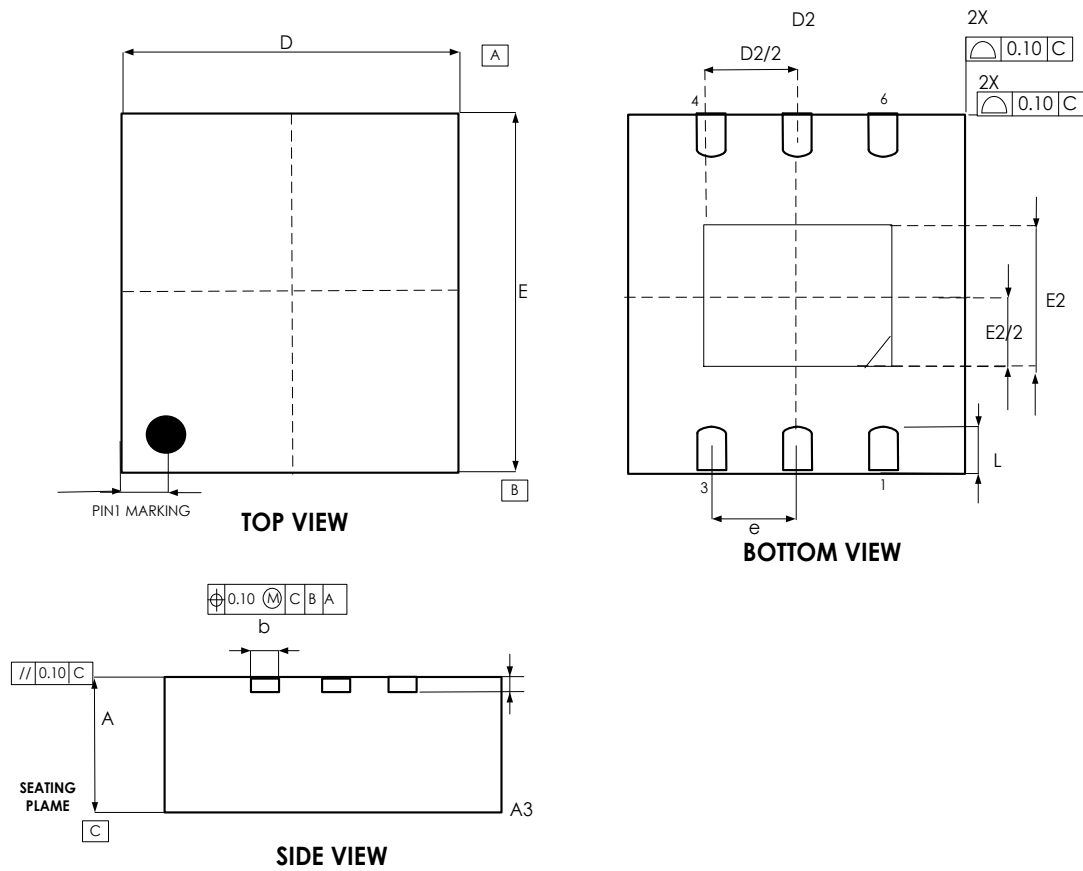
Typical schematic for PCB layout





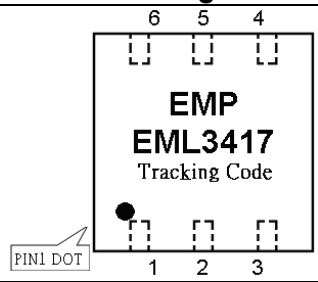
Package Information

TDFN-6



SYMBOL	COMMON					
	DIMENSIONS MILLIMETER			DIMENSIONS INCH		
	MIN.	NOM.	MAX.	MIN.	NOM.	MAX.
A	0.70	0.75	0.80	0.028	0.030	0.031
A3	0.203 REF			0.008 REF		
b	0.25	0.30	0.35	0.010	0.012	0.014
D	3.00 BSC			0.118 BSC		
D2	2.20	2.30	2.35	0.087	0.091	0.093
E	3.00 BSC			0.118 BSC		
E2	1.40	1.50	1.55	0.055	0.059	0.061
e	0.95 BSC			0.037 BSC		
L	0.25	0.35	0.45	0.010	0.014	0.018

Old Order, Mark & Packing Information

Package	Vout	Product ID	Marking	Packing																					
TDFN-6	adjustable	EML3417-00FF06NRR	 <p>The marking diagram shows a 6-pin package with a PIN1 DOT. The marking is as follows:</p> <table border="1"><tr><td>6</td><td>5</td><td>4</td></tr><tr><td>[]</td><td>[]</td><td>[]</td></tr><tr><td colspan="3">EMP</td></tr><tr><td colspan="3">EML3417</td></tr><tr><td colspan="3">Tracking Code</td></tr><tr><td>[]</td><td>[]</td><td>[]</td></tr><tr><td>1</td><td>2</td><td>3</td></tr></table>	6	5	4	[]	[]	[]	EMP			EML3417			Tracking Code			[]	[]	[]	1	2	3	5K units Tape & Reel
6	5	4																							
[]	[]	[]																							
EMP																									
EML3417																									
Tracking Code																									
[]	[]	[]																							
1	2	3																							

Revision History

Revision	Date	Description
5.0	2009.06.05	EMP transferred from version 4.4
5.1	2010.06.02	To revise circuitry
5.2	2010.09.30	Package dimension update
5.3	2011.01.28	Revise electrical characteristics (VEN)
5.4	2013.11.01	Modify marking

Important Notice

All rights reserved.

No part of this document may be reproduced or duplicated in any form or by any means without the prior permission of ESMT.

The contents contained in this document are believed to be accurate at the time of publication. ESMT assumes no responsibility for any error in this document, and reserves the right to change the products or specification in this document without notice.

The information contained herein is presented only as a guide or examples for the application of our products. No responsibility is assumed by ESMT for any infringement of patents, copyrights, or other intellectual property rights of third parties which may result from its use. No license, either express, implied or otherwise, is granted under any patents, copyrights or other intellectual property rights of ESMT or others.

Any semiconductor devices may have inherently a certain rate of failure. To minimize risks associated with customer's application, adequate design and operating safeguards against injury, damage, or loss from such failure, should be provided by the customer when making application designs.

ESMT's products are not authorized for use in critical applications such as, but not limited to, life support devices or system, where failure or abnormal operation may directly affect human lives or cause physical injury or property damage. If products described here are to be used for such kinds of application, purchaser must do its own quality assurance testing appropriate to such applications.